

EXPENDITURES

The 2014 Executive Budget Recommendation proposes \$3.2 billion in operating funds, or an increase of 8.8% from 2013. Of the \$3.2 billion, \$1.4 billion is reserved for the General Fund (comprised of Public Safety & Corporate) spending, a 3.3% increase from FY 2013. The Health Enterprise Fund will have expenditures totaling \$1.1 billion which represents a 16.8% increase from FY 2013. Additionally, Special Purpose Funds are increasing by \$25.8 million and grants by \$27.5 million.

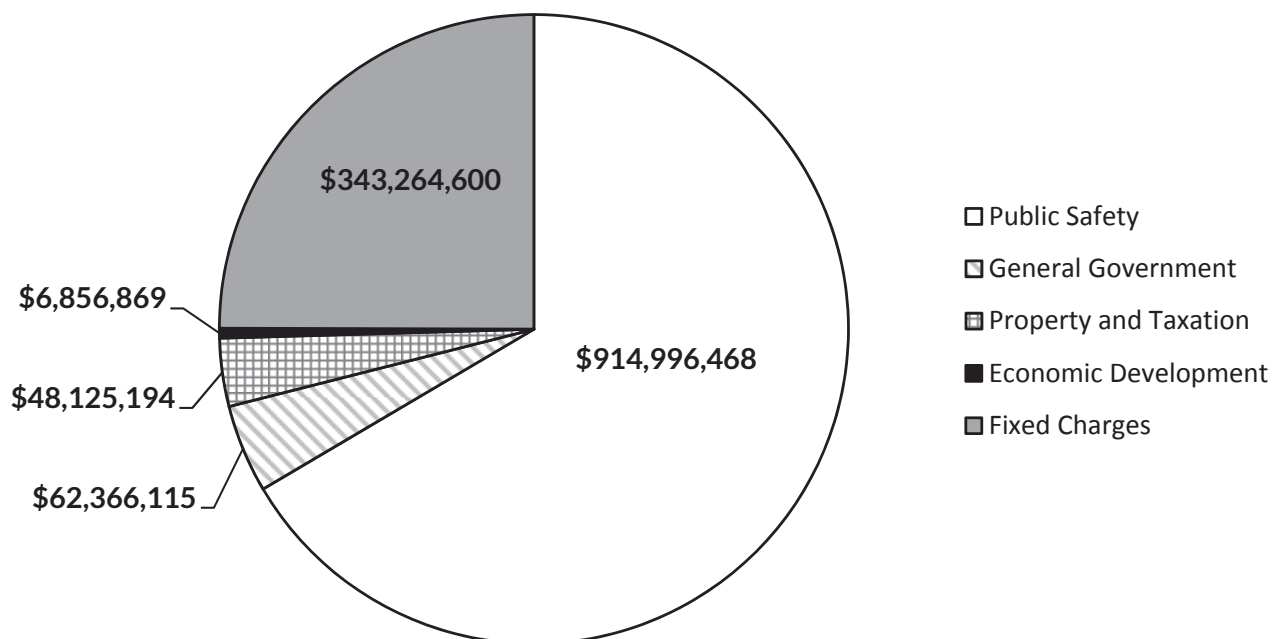
In FY 2014, Cook County continues to make fiscally responsible decisions, invest in areas for future cost-savings, increase transparency and accountability, and improve service with no increase in taxes, fines, or fees.

	2013 Adjusted Appropriation	2014 Executive Estimate	Difference Between 2013 And 2014	Percent Change
Corporate / Public Safety Fund	\$1,332M	\$1,375.6M	\$43.5M	3.30%
Health Fund	\$964M	\$1,126M	\$162M	16.80%

General Fund

In the General Fund, expenditure increases of \$43.6 million over 2013 are driven primarily by increases in mandatory public safety hiring. Cook County’s 2014 budget recognizes that 17 year olds arrested on felonies will now be processed through the juvenile system. As such, the County is expanding its Juvenile Temporary Detention Center to adhere to “Raise the Age” legislation, which tries 17 year olds charged with felonies in the juvenile court system rather than the adult system. Additional programming, personnel, and services devoted to the increase in the juvenile criminal justice system will incur an additional \$10.2 million in expenditures. Additionally, this includes increases to support the enforcement activities of the Erroneous Exemption Legislation. Absent mandatory public safety hiring, the general fund increase is less than the rate of inflation.

FY 2014 Appropriation General Fund Expenditures \$1.37 Billion



Health Enterprise Fund

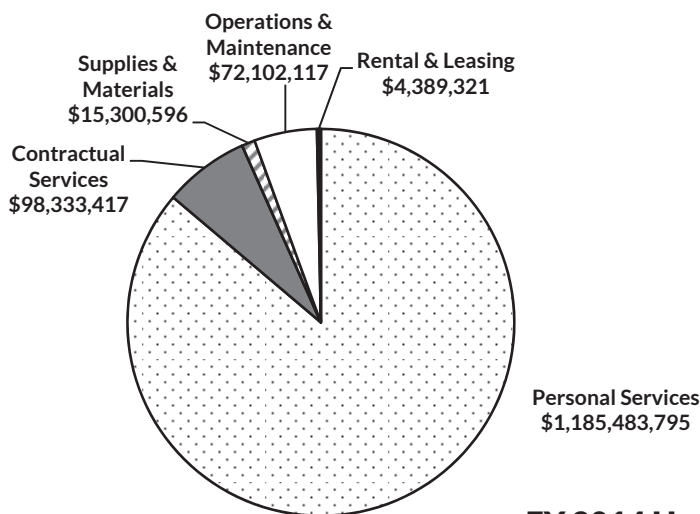
The Health Enterprise Fund shows growth of \$162 million over fiscal year 2013. The primary drivers of the cost increases are the investments in CountyCare, including providing mental health and substance abuse services, investments in information technology (IT) systems, and mandatory Court-ordered staffing increases at Cermak Health Services within the Cook County Jail. While the County has continued to transform the Health and Hospital System from emergency care to true healthcare through the CountyCare program, strategically investing in the Health System is critical to the long-term success and viability of the System.

EXPENDITURES BY TYPE

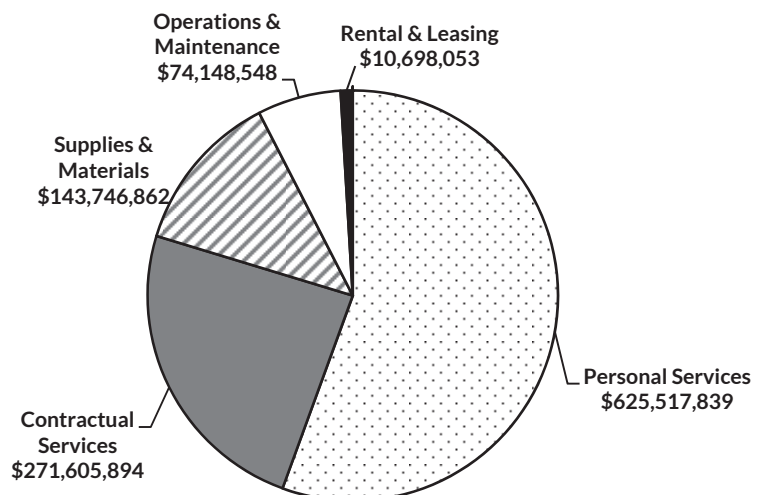
The Executive Budget Recommendation calls for 86% of the General Funds to be spent on personnel expenses, including benefits. Budgeted at \$1.19 billion, it represents a 9% proportional increase to the 2014 Appropriation in personnel spending. Personnel expenditures represent \$626 million or 56% of Health Enterprise Funds.

In non-personnel expenditures from the General Fund, a total of \$92 million or 7% is spent on operations, maintenance, supplies, and rental and leasing; additionally, \$98 million being spent on contractual services. With respect to the Health Enterprise Fund, operations, maintenance, supplies, and rental and leasing represent \$229 million or 20% of expenditures while \$272 million or 24% is spent on contractual services.

FY 2014 General Fund Expenditures by Type



FY 2014 Health Enterprise Fund Expenditures by Type



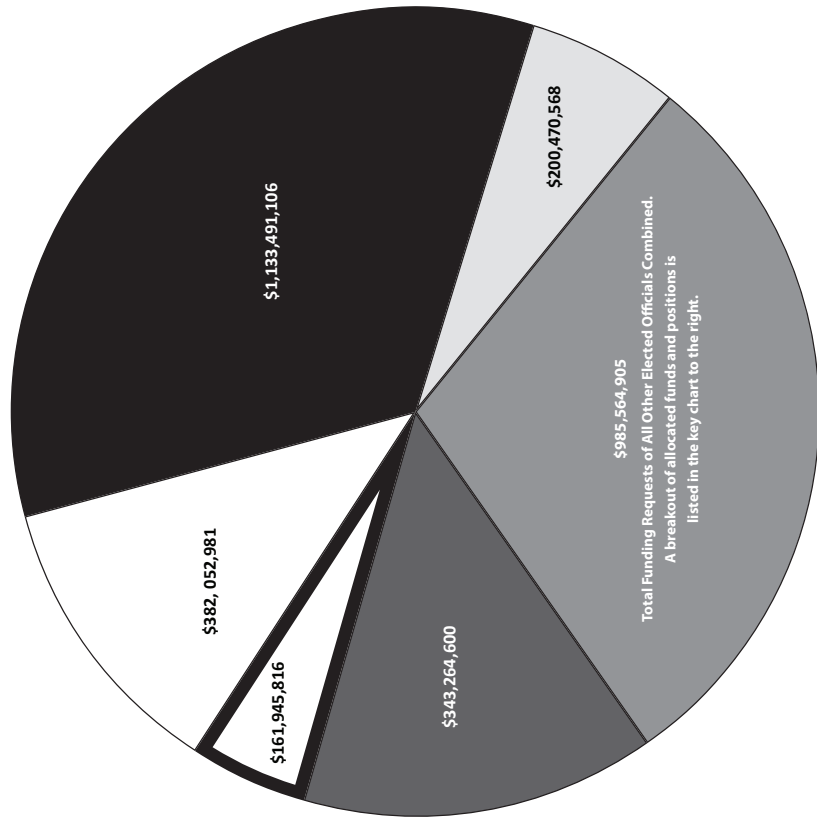
2014 BUDGET RECOMMENDATION SUMMARY

	2012 Appropriation	2013 Appropriation	2014 Pres. Recom	2014/2013 Change
<u>General Fund</u>				
Budget	\$ 1,341,897,117	\$ 1,332,040,244	\$ 1,375,609,246	\$ 43,569,002
Positions (FTE)	14,857.1	14,860.9	15,355.5	494.6
<u>Health Enterprise Fund</u>				
Budget	\$ 894,133,047	\$ 963,658,515	\$ 1,125,717,196	\$ 162,058,681
Position (FTE)	7,057.8	6,668.1	6,745.1	77.0
<u>Election Fund</u>				
Budget	\$ 41,606,648	\$ 19,712,485	\$ 40,227,484	\$ 20,514,999
Position (FTE)	133.0	133.0	133.0	-
Subtotal Budget	\$ 2,277,636,812	\$ 2,315,411,244	\$ 2,541,553,926	\$ 226,142,682
Subtotal FTE	22,047.9	21,662.0	22,233.6	571.6
<u>Special Purpose Fund</u>				
Budget	\$ 528,833,555	\$ 497,973,957	\$ 503,290,234	\$ 5,316,277
Positions (FTE)	946.9	916.9	896.5	(20.4)
<u>Grants</u>				
Budget	\$ 148,928,355	\$ 134,433,126	\$ 161,945,816	\$ 27,512,690
Positions (FTE)	664.6	590.0	543.0	(47.0)
Total Operating Funds	\$ 2,955,398,722	\$ 2,947,818,327	\$ 3,206,789,976	\$ 258,971,649
Total Positions (FTE)	23,659.4	23,168.9	23,673.1	504.2
<u>Capital Improvement</u>				
Budget	\$ 391,689,580	\$ 372,020,827	\$ 329,438,894	\$ (42,581,933)
MFT - Highway Improvement	\$ 100,000,000	\$ -	\$ -	\$ -



2014 Cook County Executive Budget Recommendation

By Dollar Amounts, In Areas Of Funding



Health and Hospitals Systems Board Total 6,787.1 FTE* \$1,133,491,106	County Treasurer Total 92.0 FTE* \$115,558,347
Cook County Board President Total* 2,369.2 FTE* \$200,470,568	Office of the Independent Inspector General Total 20.0 FTE* \$1,772,838
Sheriff Total 6,769.6 FTE* \$463,664,572	Office of the Cook County Commissioners Total 85.9 FTE* \$7,338,091
Chief Judge Total 3,075.6 FTE* \$207,911,855	Board of Review Total 125.0 FTE* \$8,233,141
Clerk of the Circuit Court Total 1,762.4 FTE* \$96,569,823	Board of Election Commissioners Total 4.0 FTE* \$16,189,445
State's Attorney Total 1,193.3 FTE* \$97,681,591	Public Administrator Total 18.0 FTE* \$1,097,074
County Clerk Total 278.0 FTE* \$33,239,659	Fixed Charges Total** \$343,264,600
County Assessor Total 360.0 FTE* \$25,374,799	Grants Total*** \$161,945,816
Recorder of Deeds Total 190.0 FTE* \$14,633,670	Other Funds Total**** \$382,052,981
Veterans Assistance Commission \$300,000	

***The following bureaus and their departments fall under the President's Budget Appropriations:**
Cook County Board President: Office of the President, Judicial Advisory Council, Department of Homeland Security and Emergency Management Agency; **Cook County Land Bank Authority:** **County Auditor:** **Administrative Hearing Board;** **Bureau of Administration:** Office of the Chief Administrative Officer, Environmental Control, Medical Examiner, Office of Adoption and Child Custody Advocacy, Department of Transportation and Highways, MFT Illinois First (1st), Animal Control, County Law Library; **Bureau of Finance:** Office of the Chief Financial Officer, Revenue, Risk Management, County Comptroller, Budget and Management Services, Contract Compliance, County Procurement Agent; **Bureau of Human Resources:** Department of Human Resources, Employee Appeals Board; **Department of Human Rights and Ethics;** **Bureau of Technology:** Technology Policy and Planning, IT Solutions and Services, Geographical Information Systems; **Bureau of Economic Development:** Planning and Development, Capital Planning and Policy, Building and Zoning, Zoning Board of Appeals; **Facilities Management;** **Public Defender**

***FTE - Full Time Equivalent**
 Those accounts regarded as Fixed Charges are divided as Corporate or Department-490 at \$55,239,935 and Public Safety or Department-499, at \$288,024,665. The two departments are referred to as Fixed Charges and Special Purpose Appropriations (490- Corporate Fund and 499-Public Safety Fund) are for items or costs that cannot readily be distributed to any one department within the respective funds. These are costs that are attributed to the fund and contribute to the operations of all or some of the departments of the respective fund. The major cost is fringe benefits which includes Health Insurance. Note, the 899-Health fixed charge department (\$112,455,101) was into the Health Enterprise Fund to show the true cost of the Health System. *Grants awarded to the County from Federal agencies at \$152,452,152, grants awarded to the county from State Agencies at \$8,906,844 and grants awarded through Public and Private Agencies at \$586,820. ****Those accounts regarded as Other Funds subdivided as the Annuity and Benefits or Department 590 at \$194,668,229 and Bonds and Interest or Department 853 at \$187,384,752.

BUDGET SUMMARY

SUMMARY TABLES

Summary of Appropriations and Expenditures by Fund

Summary of Appropriations and Expenditures by Fund and Department

Summary of Appropriations and Expenditures by Control Officer

Summary of Appropriations and Expenditures by Control Officer and Department

Summary of Appropriations by Control Officer and Program Area

Summary of Appropriations by Object Classification and Funds

Summary of Appropriations by Control Officer FY 2014

Summary of Full Time Equivalent by Fund

Summary of Full Time Equivalent by Control Officer

Summary of Salaries by Control Officer

SUMMARY OF APPROPRIATIONS AND EXPENDITURES BY FUND

Funds	FY 2010 Expenditures	FY 2010 Appropriations	FY 2011 Expenditures	FY 2011 Appropriations	FY 2012 Expenditures	FY 2012 Appropriations	FY 2013* Expd as of 9/27/13	FY 2013 Appropriations	FY 2014 Appropriations	Difference FY 14 - FY 13
General Fund										
Corporate Fund	\$190,107,162	\$201,244,595	\$136,224,833	\$169,406,581	\$157,573,004	\$163,019,988	\$119,658,858	\$145,088,233	\$161,054,801	\$15,966,568
Public Safety Fund	1,165,935,641	1,163,245,961	1,194,962,175	1,248,263,013	1,152,484,761	1,178,878,129	912,507,734	1,186,952,011	1,214,554,445	27,602,434
Total General Fund	\$1,356,042,802	\$1,364,490,546	\$1,331,207,008	\$1,417,669,594	\$1,310,057,765	\$1,341,897,117	\$1,032,166,592	\$1,332,040,244	\$1,375,609,246	\$43,569,002
Enterprise Fund										
Health Fund	952,593,306	973,850,652	864,428,692	911,860,231	865,022,804	894,133,047	747,711,615	963,658,515	1,125,717,196	162,058,681
Total Enterprise Fund	\$952,593,306	\$973,850,652	\$864,428,692	\$911,860,231	\$865,022,804	\$894,133,047	\$747,711,615	\$963,658,515	\$1,125,717,196	\$162,058,681
Special Purpose and Election Funds										
Total Special Purpose and Election Funds	\$515,899,892	\$545,837,136	\$516,816,938	\$531,797,467	\$548,193,926	\$561,713,043	\$485,693,876	\$517,686,442	\$543,517,718	\$25,831,276
Allowance for Uncollected Taxes **	11,598,042	11,598,042	8,727,160	8,727,160	8,727,160	8,727,160	-	-	-	-
Restricted Fund (Grants)	160,810,112	160,810,112	185,029,746	185,029,746	148,928,355	148,928,355	134,433,126	134,433,126	161,945,816	27,512,690
Total Operating Fund	\$2,996,944,155	\$3,056,586,488	\$2,906,209,543	\$3,055,084,198	\$2,880,930,010	\$2,955,398,722	\$2,400,005,209	\$2,947,818,327	\$3,206,789,976	\$258,971,649
Capital Improvements	216,318,284	518,971,730	188,739,806	459,605,254	46,315,900	391,689,580	67,803,706	372,020,827	329,438,894	(42,861,933)
Grand Total	\$3,213,262,439	\$3,575,558,218	\$3,094,949,349	\$3,514,689,452	\$2,927,245,910	\$3,347,088,302	\$2,467,808,915	\$3,319,839,154	\$3,536,228,870	\$216,389,716

* FY 2010 - FY 2012 Expenditures are restated to match with Trial Balance. FY2013 Expenditures are as of 09/27/2013.

**For FY 2013 and FY 2014, Allowance for Uncollected Taxes is netted out of the Property Tax Levy and is not budgeted as an expense.

SUMMARY OF APPROPRIATIONS AND EXPENDITURES BY FUND AND DEPARTMENT

Departments	FY 2010 Expenditures	FY 2010 Appropriations	FY 2011 Expenditures	FY 2011 Appropriations	FY 2012 Expenditures	FY 2012 Appropriations	FY 2012 Expenditures	FY 2012 Appropriations	FY 2013* Expd as of 9/27/13	FY 2013 Appropriations	FY 2014 Appropriations	Difference FY 14 - FY 13
General Fund												
Corporate Fund												
002 Department of Human Rights and Ethics	\$563,219	\$804,818	\$663,103	\$753,348	\$769,445	\$776,305	\$532,293	\$843,238	\$532,293	\$843,238	\$776,602	\$(66,636)
007 Revenue	2,417,950	2,572,615	2,281,675	2,036,609	2,805,103	2,443,424	1,839,678	2,249,145	1,839,678	2,249,145	2,118,143	(131,002)
008 Risk Management	1,620,144	1,644,544	1,409,893	1,450,076	763,880	827,214	524,253	621,531	524,253	621,531	701,533	80,002
009 Technology Policy & Planning	3,483,273	4,941,152	6,516,524	6,177,593	5,988,825	4,949,301	4,240,988	5,185,049	4,240,988	5,185,049	4,259,744	(925,305)
010 Office of the President	2,597,108	2,362,490	1,843,703	1,914,072	1,583,394	1,611,196	1,043,702	1,569,999	1,043,702	1,569,999	1,569,999	-
011 Office of the Chief Administrative Officer	2,065,292	2,303,804	2,679,140	1,819,286	2,883,917	2,570,975	2,246,239	2,636,851	2,246,239	2,636,851	2,712,586	75,735
012 Department for Management of Information Systems	5,764,262	6,266,489	-	-	-	-	-	-	-	-	-	-
013 Planning and Development	897,989	868,402	874,935	773,510	519,040	314,882	450,262	499,886	450,262	499,886	1,055,426	555,740
014 Budget and Management Services	1,341,534	1,561,525	1,149,440	1,149,142	1,291,977	1,154,277	1,239,720	1,468,787	1,239,720	1,468,787	1,466,716	(2,071)
016 IT Solutions & Services	2,518,363	2,632,720	5,552,291	5,790,513	4,873,476	5,063,644	4,839,843	6,292,361	4,839,843	6,292,361	6,649,562	357,201
018 Office Of The Secretary To The Board of Commissioners	1,155,556	1,207,483	924,929	1,114,619	1,017,850	1,037,415	736,442	1,094,175	736,442	1,094,175	1,097,956	63,781
019 Employee Appeals Board	206,336	207,184	154,511	168,749	132,809	148,510	57,379	143,959	57,379	143,959	65,251	(78,708)
020 County Comptroller	2,936,874	3,245,356	2,637,064	2,430,050	2,506,787	2,598,075	1,967,374	2,794,833	1,967,374	2,794,833	2,997,468	262,635
021 Office of the Chief Financial Officer	832,960	925,592	697,573	808,432	927,311	825,151	1,021,961	1,015,010	1,021,961	1,015,010	1,112,619	97,609
022 Contract Compliance	864,854	824,931	786,501	799,621	737,239	751,145	544,036	640,588	544,036	640,588	770,724	130,136
023 Department of Office Technology	1,137,287	1,297,496	-	-	-	-	-	-	-	-	-	-
026 Department of Administrative Hearings	841,542	927,010	998,888	951,954	1,081,774	995,750	847,998	1,223,074	847,998	1,223,074	1,232,356	9,282
027 Office of Economic Development	-	-	-	-	838,852	1,333,423	508,737	709,684	508,737	709,684	787,462	77,778
028 IT Shared Services	-	-	-	-	2,855,865	2,250,702	-	-	-	-	-	-
030 Office of the Chief Procurement Officer	1,948,644	2,279,137	1,939,335	2,098,189	1,555,489	1,648,867	1,753,349	2,466,916	1,753,349	2,466,916	2,754,224	287,308
031 Capital Planning and Policy	1,996,540	2,128,706	1,267,423	1,625,873	945,429	929,707	781,914	1,113,829	781,914	1,113,829	1,429,568	315,739
032 Department of Human Resources	3,418,753	3,385,312	2,941,558	2,772,606	2,974,080	2,998,748	2,521,989	3,569,611	2,521,989	3,569,611	3,901,060	331,449
040 County Assessor	25,390,951	27,209,441	22,850,880	22,170,253	21,667,543	21,582,137	17,316,045	22,737,234	17,316,045	22,737,234	24,624,799	1,887,565
050 Board of Review	8,091,978	8,311,088	6,957,462	6,771,874	7,824,773	7,679,750	6,413,681	8,226,970	6,413,681	8,226,970	8,233,141	6,171
060 County Treasurer	5,248,666	5,474,200	4,871,929	5,188,503	4,745,395	4,853,014	3,176,169	3,917,499	3,176,169	3,917,499	1,952,814	(1,964,685)
070 County Auditor	818,846	918,433	776,128	781,115	731,614	737,420	469,009	903,832	469,009	903,832	887,093	(16,739)
080 Office of the Independent Inspector General	889,109	1,214,465	1,063,734	1,572,034	1,261,843	1,719,871	1,053,947	1,713,509	1,053,947	1,713,509	1,772,838	59,329
081 First District -Office of the County Commissioner	421,458	434,462	354,241	360,000	354,984	359,673	268,625	358,726	268,625	358,726	358,726	-
082 Second District -Office of the County Commissioner	383,931	395,781	346,522	360,000	355,469	359,673	241,027	358,905	241,027	358,905	358,905	-
083 Third District -Office of the County Commissioner	288,759	346,624	238,735	360,000	259,518	359,007	220,960	359,007	220,960	359,007	358,820	(187)
084 Fourth District -Office of the County Commissioner	356,383	371,079	344,528	360,000	351,197	358,740	248,115	358,740	248,115	358,740	358,775	35
085 Fifth District -Office of the County Commissioner	419,017	432,033	364,354	360,000	357,713	359,673	257,782	358,558	257,782	358,558	358,558	-
086 Sixth District -Office of the County Commissioner	417,754	433,607	345,129	360,000	354,675	359,673	263,336	358,583	263,336	358,583	358,583	-

* FY 2010 - FY 2012 Expenditures are restated to match with Trial Balance. FY2013 Expenditures are as of 9/27/2013.

**For FY 2013 and FY 2014, Allowance for Uncollected Taxes is netted out of the Property Tax Levy and is not budgeted as an expense.

***Juvenile Temporary Detention Center, department 440 is managed by the Court appointed Transitional Administrator, not the Chief Judge.

SUMMARY OF APPROPRIATIONS AND EXPENDITURES BY FUND AND DEPARTMENT

Departments	FY 2010 Expenditures	FY 2010 Appropriations	FY 2011 Expenditures	FY 2011 Appropriations	FY 2012 Expenditures	FY 2012 Appropriations	FY 2013* Expd as of 9/27/13	FY 2013 Appropriations	FY 2014 Appropriations	Difference FY 14 - FY 13
087 Seventh District-Office of the County Commissioner	\$483,766	\$474,138	\$341,053	\$360,000	\$341,583	\$358,819	\$250,806	\$359,052	\$359,052	\$-
088 Eighth District-Office of the County Commissioner	358,524	428,833	316,361	360,000	309,742	358,904	256,521	358,919	358,847	(72)
089 Ninth District-Office of the County Commissioner	354,033	363,399	350,162	360,000	355,082	358,688	277,672	358,683	358,683	-
090 Tenth District-Office of the County Commissioner	314,578	346,585	308,967	360,000	344,657	359,115	236,610	358,928	358,903	(25)
091 Eleventh District-Office of the County Commissioner	378,688	534,948	279,479	500,606	265,894	499,597	203,525	499,597	499,597	-
092 Twelfth District-Office of the County Commissioner	249,287	334,649	309,867	360,000	336,513	359,154	272,956	358,757	358,757	-
093 Thirteenth District-Office of the County Commissioner	356,606	363,082	315,471	360,000	316,875	358,800	256,591	358,865	358,692	(173)
094 Fourteenth District-Office of the County Commissioner	353,449	409,083	318,552	360,000	340,280	358,808	265,949	358,732	358,732	-
095 Fifteenth District-Office of the County Commissioner	314,480	356,328	336,783	360,000	355,168	358,856	248,761	358,824	358,824	-
096 Sixteenth District-Office of the County Commissioner	334,359	331,353	330,526	360,000	337,185	358,873	262,684	358,835	358,835	-
097 Seventeenth District-Office of the County Commissioner	366,736	378,946	348,345	360,000	358,726	359,673	273,806	358,778	358,846	68
110 County Clerk	8,222,282	8,623,560	7,358,765	7,922,678	7,550,761	7,642,414	5,877,358	7,371,477	7,628,320	256,843
130 Recorder of Deeds	6,884,825	7,652,140	5,835,689	6,074,135	5,614,130	5,605,917	3,971,949	5,555,564	5,686,120	130,556
160 Building and Zoning	3,331,105	3,511,123	3,260,001	3,431,649	3,269,986	3,222,774	2,525,577	3,200,340	3,184,227	(16,113)
161 Department of Environmental Control	1,544,468	1,681,587	1,425,935	1,651,285	1,447,890	1,607,776	1,257,696	1,613,155	1,637,725	24,570
170 Zoning Board of Appeals	450,575	466,114	438,064	504,248	417,917	418,118	346,199	427,413	400,186	(27,227)
452 Veterans' Assistance Commission	366,432	438,396	404,712	437,637	370,236	362,360	-	-	300,000	300,000
490 Fixed Charges and Special Purpose Appropriations - Corporate	68,675,287	71,571,624	31,972,182	62,729,988	53,146,130	58,443,830	40,630,489	40,784,692	55,239,935	14,455,243
500 Department of Transportation and Highways	15,432,849	15,048,718	8,141,780	9,276,334	6,816,980	7,668,170	4,617,857	6,377,733	5,808,469	(569,264)
Total Corporate Fund	\$190,107,162	\$201,244,585	\$136,224,833	\$169,406,581	\$157,573,004	\$163,018,988	\$119,658,858	\$145,089,233	\$161,054,801	\$15,966,568
Public Safety Fund										
200 Department of Facilities Management	36,471,440	34,538,482	33,913,796	37,610,804	36,757,836	35,188,781	27,046,266	34,782,227	35,198,174	415,947
205 Justice Advisory Council	943,216	1,207,187	449,745	982,596	635,900	753,675	335,548	438,332	422,948	(15,384)
210 Office of the Sheriff	2,226,908	2,297,226	1,908,873	1,367,807	2,269,160	2,127,347	2,477,669	3,144,121	4,899,822	1,755,701
211 Department of Fiscal Administration and Support Services	22,917,613	23,667,199	17,503,144	13,249,507	13,316,272	13,313,622	11,009,549	14,222,245	-	(14,222,245)
212 Sheriff's Women's Justice Programs	8,025,940	8,387,988	7,229,575	7,309,621	6,121,321	5,705,512	6,939,877	8,002,420	-	(8,002,420)
214 Sheriff's Administration and Human Resources	-	-	-	-	-	-	-	-	13,650,155	13,650,155
215 Custodian	10,311,818	11,779,165	124,461	-	-	-	-	-	-	-
217 Sheriff's Information Technology	-	-	-	-	-	-	-	-	4,284,457	4,284,457
230 Court Services Division	87,679,646	93,239,486	84,079,590	80,330,529	87,168,042	81,173,997	68,760,132	85,532,064	85,931,024	398,960
231 Police Department	48,343,105	48,265,784	48,956,593	44,655,201	45,839,132	42,955,595	36,267,156	42,724,556	48,029,191	5,304,635
235 Impact Incarceration	6,671,209	6,910,807	6,499,254	6,544,239	7,005,774	6,426,193	-	-	-	-
236 Reentry and Diversion Programs	28,718,724	28,878,102	28,764,741	26,910,122	15,776,047	16,284,647	19,396,872	21,314,652	-	(21,914,652)
238 Jail Diversion and Crime Prevention	1,622,843	1,836,048	1,528,136	1,570,374	-	-	-	-	-	-

* FY 2010 - FY 2012 Expenditures are restated to match with Trial Balance. FY 2013 Expenditures are as of 09/27/2013.

**For FY 2013 and FY 2014, Allowance for Uncollected Taxes is netted out of the Property Tax Levy and is not budgeted as an expense.

***Juvenile Temporary Detention Center, department 440 is managed by the Court appointed Transitional Administrator, not the Chief Judge.

SUMMARY OF APPROPRIATIONS AND EXPENDITURES BY FUND AND DEPARTMENT

Departments	FY 2010 Expenditures	FY 2010 Appropriations	FY 2011 Expenditures	FY 2011 Appropriations	FY 2012 Expenditures	FY 2012 Appropriations	FY 2013* Expend as of 9/27/13	FY 2013 Appropriations	FY 2014 Appropriations	Difference FY 14 - FY 13
239 Department of Corrections	\$229,449,040	\$44,716,331	\$237,967,861	\$226,028,868	\$265,542,082	\$236,735,994	\$217,220,609	\$266,292,793	\$303,865,830	\$37,573,037
249 Sheriff's Merit Board	1,163,046	1,291,924	1,434,141	1,429,911	1,309,053	1,260,219	1,372,649	1,682,497	1,795,358	112,861
250 State's Attorney	98,973,452	101,175,133	93,172,992	88,871,814	92,532,832	87,916,142	73,961,287	90,678,192	93,229,590	2,551,398
259 Medical Examiner	7,106,936	8,586,460	6,582,690	7,363,052	6,729,601	6,877,063	6,236,369	8,339,093	10,428,262	2,089,169
260 Public Defender	56,997,212	58,051,097	56,605,176	51,787,926	55,843,608	52,370,525	40,638,915	55,588,055	55,275,450	(312,605)
265 Department of Homeland Security and Emergency Management - General Fund	-	-	28,846	-	549,673	878,684	973,316	963,906	1,359,351	395,445
280 Adult Probation Department	42,013,374	44,488,458	34,536,947	34,361,500	37,472,930	35,686,378	26,921,361	34,034,051	37,353,867	3,319,816
300 Judiciary	14,757,167	14,036,399	13,277,667	12,801,005	11,525,667	9,785,886	7,532,618	9,765,924	10,691,946	926,022
305 Public Guardian	17,719,822	17,850,940	17,028,377	16,705,222	17,542,471	16,822,850	13,223,308	17,598,581	17,468,075	(130,506)
310 Office of the Chief Judge	32,085,614	34,245,828	27,096,173	29,044,926	28,757,654	25,731,751	24,741,662	30,408,267	30,516,519	108,252
312 Forensic Clinical Services	2,689,108	3,023,093	2,462,877	2,783,176	2,218,343	2,405,254	1,608,988	2,476,884	2,413,765	(63,119)
313 Social Service	9,644,430	10,043,275	7,384,547	7,414,338	10,654,371	9,973,360	7,942,053	10,203,678	10,505,600	301,922
326 Juvenile Probation and Court Services	34,249,399	35,066,020	29,251,452	30,290,380	30,048,615	29,505,066	24,339,309	30,869,909	31,660,029	790,120
335 Clerk of the Circuit Court - Office of the Clerk	77,211,036	80,419,118	74,377,451	74,354,030	74,587,286	71,801,126	58,874,508	73,176,171	74,929,106	1,752,935
390 Public Administrator	1,121,531	1,212,475	1,113,148	1,172,007	1,145,355	1,160,479	745,300	1,143,832	1,097,074	(46,758)
440 Juvenile Temporary Detention Center***	41,837,129	39,525,228	42,058,349	38,386,506	45,873,784	40,462,696	31,441,276	41,928,602	50,842,085	8,913,483
451 Office of Adoption and Child Custody Advocacy	796,796	732,899	620,078	664,546	586,096	613,999	514,322	688,361	682,102	(6,259)
499 Fixed Charges and Special Purpose Appropriations - Public Safety	244,208,085	207,773,809	319,025,694	404,273,006	254,675,855	344,981,298	201,986,815	300,352,598	288,024,665	(12,327,933)
Total Public Safety Fund	\$1,165,935,641	\$1,163,245,961	\$1,194,982,175	\$1,246,263,013	\$1,152,484,761	\$1,178,878,129	\$912,507,734	\$1,186,952,011	\$1,214,554,445	\$27,602,434
Total General Fund	\$1,356,042,802	\$1,364,490,546	\$1,331,207,008	\$1,417,669,594	\$1,310,057,765	\$1,341,897,117	\$1,032,166,592	\$1,332,040,244	\$1,375,609,246	\$43,569,002
Enterprise Funds										
Health Fund										
240 Cermak Health Services of Cook County	32,053,056	41,278,455	33,983,507	41,238,218	38,517,570	40,113,122	31,085,939	40,864,509	46,630,843	5,766,334
241 Health Services - JTDC	2,692,666	3,677,600	2,819,502	3,541,587	3,098,507	3,920,113	2,408,007	3,876,605	3,910,387	33,782
890 Health System Administration	177,294,308	140,648,324	139,876,960	147,622,343	154,760,022	168,676,467	139,837,689	154,886,527	189,471,395	34,584,868
891 Provident Hospital of Cook County	72,294,061	97,052,895	56,626,298	67,064,238	47,915,652	51,492,542	35,795,017	49,475,456	48,357,796	(1,117,660)
893 Ambulatory and Community Health Network of Cook County	44,653,300	51,793,734	42,886,097	51,768,786	44,183,061	47,067,401	38,511,917	51,815,924	51,465,467	(350,457)
894 Ruth M. Rothstein CORE Center	11,141,526	11,841,106	10,906,996	11,865,274	11,087,303	11,844,779	9,644,504	11,698,210	11,753,051	54,841
895 Department of Public Health	15,533,725	17,438,553	15,835,994	17,678,034	15,469,700	17,164,364	9,693,215	16,107,119	14,450,251	(1,658,868)
896 Managed Care	-	-	-	-	-	-	62,377,691	96,164,900	190,804,289	94,639,389
897 John H. Stroger, Jr. Hospital of Cook County	396,237,817	436,765,313	400,649,112	421,988,840	416,121,502	429,771,321	325,704,885	426,624,711	445,202,520	19,577,809
898 Oak Forest Health Center of Cook County	70,041,043	90,459,006	50,776,045	52,367,379	26,471,791	35,180,850	8,702,520	12,438,287	11,216,096	(1,222,191)
899 Fixed Charges and Special Purpose Appropriations - Health	128,651,805	82,895,066	110,088,180	96,755,532	107,397,696	88,902,088	83,950,232	100,706,267	112,455,101	11,748,834

* FY 2010 - FY 2012 Expenditures are restated to match with Trial Balance. FY2013 Expenditures are as of 09/27/2013.

**For FY 2013 and FY 2014, Allowance for Uncollected Taxes is netted out of the Property Tax Levy and is not budgeted as an expense.

***Juvenile Temporary Detention Center, department 440 is managed by the Court appointed Transitional Administrator, not the Chief Judge.

SUMMARY OF APPROPRIATIONS AND EXPENDITURES BY FUND AND DEPARTMENT

Departments	FY 2010 Expenditures	FY 2010 Appropriations	FY 2011 Expenditures	FY 2011 Appropriations	FY 2012 Expenditures	FY 2012 Appropriations	FY 2012 Expd as of 9/27/13	FY 2013 Appropriations	FY 2014 Appropriations	Difference FY 14 - FY 13
Total Health Fund	\$952,593,306	\$973,850,652	\$864,428,692	\$911,860,231	\$865,022,804	\$894,133,047	\$747,711,615	\$963,658,515	\$1,125,717,196	\$162,058,681
Total Enterprise Fund	\$952,593,306	\$973,850,652	\$864,428,692	\$911,860,231	\$865,022,804	\$894,133,047	\$747,711,615	\$963,658,515	\$1,125,717,196	\$162,058,681
Special Purpose and Election Funds										
Election Fund										
524 County Clerk - Elections Division Fund	\$22,222,398	\$25,305,360	\$16,444,376	\$19,200,323	\$23,277,513	\$24,209,439	\$14,949,762	\$18,804,383	\$24,038,039	\$5,233,656
525 Board of Election Commissioners - Election Fund	17,340,954	17,615,482	478,573	482,882	16,887,603	17,397,209	1,309,239	908,102	16,189,445	15,281,343
Total Election Fund	\$39,563,353	\$42,920,842	\$16,922,949	\$19,683,175	\$40,165,115	\$41,606,648	\$16,259,001	\$19,712,485	\$40,227,484	\$20,514,999
Special Purpose Funds										
501 MFT Illinois First (1st)	13,148,724	14,652,754	19,308,915	21,027,216	20,923,652	21,946,330	15,491,608	21,960,729	22,748,938	788,209
510 Animal Control Department	2,367,807	2,990,557	2,938,422	3,077,974	2,317,954	3,161,093	2,370,985	3,411,065	3,452,832	41,767
527 County Recorder Document Storage System Fund	4,413,372	5,727,916	3,019,312	2,965,658	2,755,954	2,729,796	2,364,795	3,231,719	4,771,195	1,539,476
528 Clerk of the Circuit Court Automation Fund	18,006,834	21,324,354	15,297,996	15,198,394	12,987,788	13,021,447	8,166,834	9,936,276	10,617,929	1,281,653
529 Clerk of the Circuit Court Document Storage Fund	12,969,135	20,545,849	14,822,242	15,915,399	14,741,624	15,846,600	7,403,440	9,409,841	9,842,419	432,578
530 Cook County Law Library	5,081,641	5,863,622	6,913,793	6,133,209	6,459,321	6,955,212	3,718,456	6,846,942	6,003,918	(843,024)
531 Circuit Court - Illinois Dispute Resolution Fund	200,000	200,000	708,103	700,277	300,000	400,000	200,000	280,000	225,000	(55,000)
532 Adult Probation/Probation Service Fee Fund	2,826,384	3,939,583	6,160,438	6,416,400	3,416,367	3,313,898	3,819,371	5,887,346	4,324,052	(1,563,294)
533 County Clerk - Automation Fund	764,772	1,059,150	1,326,191	1,592,205	1,137,616	1,297,273	925,770	1,398,057	1,573,300	175,243
534 County Treasurer - Tax Sales Automation Fund	6,797,157	7,625,660	7,145,651	8,687,961	8,129,107	8,913,040	6,917,932	9,749,966	9,605,533	(144,433)
535 Intergovernmental Agreement/ETSB	1,465,944	1,247,080	1,846,687	1,570,336	4,248,207	3,403,181	3,055,898	3,141,002	1,141,335	(1,999,667)
538 Juvenile Probation - Supplementary Officers	3,067,089	2,848,605	5,720,317	6,915,603	6,840,238	6,768,931	3,746,373	4,484,285	3,240,516	(1,243,769)
541 Social Service/Probation and Court Services Fund	3,771,392	4,057,848	5,242,704	5,376,087	2,128,972	2,749,049	2,424,017	3,190,049	2,944,994	(245,055)
542 Self - Insurance Fund	93,433	-	(1,415)	-	500,717	-	4,707,096	-	-	-
544 Lead Poisoning Prevention Fund	1,063,726	3,775,173	1,046,542	2,965,553	1,076,225	1,388,957	892,724	1,872,298	1,227,008	(645,290)
545 Geographic Information Systems	9,143,339	12,445,017	5,504,939	6,051,817	11,557,773	17,834,776	8,169,169	13,272,632	15,461,850	2,189,218
546 Sheriff's Youthful Offender Alcohol & Drug Education	6,012	9,396	849	9,018	-	8,635	-	2,400	2,400	-
561 State's Attorney Narcotics Forfeiture	2,980,927	3,268,993	3,146,547	3,455,853	3,940,610	3,384,472	3,088,871	4,117,230	4,227,001	109,771
562 State's Attorney Bad Check Diversion Program	362,265	584,213	239,541	351,884	29,024	70,000	74,851	200,000	67,000	(133,000)
564 TB Sanitarian District	3,888,400	6,019,146	5,432,328	7,079,751	4,478,170	5,715,915	3,223,771	5,666,826	6,546,902	880,076
565 Department of Homeland Security and Emergency Management	1,478,907	1,016,638	853,978	853,976	12,896	-	-	-	-	-
566 State's Attorney Capital Litigation Trust Fund	2,034,687	2,973,560	(634,877)	-	-	-	-	-	-	-
567 Clerk of the Circuit Court Administrative Fund	1,175,887	1,219,662	1,172,884	1,145,068	922,250	889,018	542,671	631,571	730,369	98,798
570 GIS Fee Fund	160,912	212,902	2,196,138	2,176,575	2,382,414	2,504,892	2,032,468	2,638,445	3,599,488	961,043
571 Rental Housing Support Fee Fund	140,299	149,204	540,086	479,617	335,609	482,591	183,173	346,506	576,867	230,361
572 Children's Waiting Room Revenue Fund	1,440,582	1,441,500	7,416,750	7,303,534	3,086,010	3,206,879	1,430,143	1,934,515	3,085,407	1,150,892

* FY 2010 - FY 2012 Expenditures are restated to match with Trial Balance. FY2013 Expenditures are as of 09/27/2013.

**For FY 2013 and FY 2014, Allowance for Uncollected Taxes is netted out of the Property Tax Levy and is not budgeted as an expense.

***Juvenile Temporary Detention Center, department 440 is managed by the Court appointed Transitional Administrator, not the Chief Judge.

SUMMARY OF APPROPRIATIONS AND EXPENDITURES BY FUND AND DEPARTMENT

Departments	FY 2010 Expenditures	FY 2010 Appropriations	FY 2011 Expenditures	FY 2011 Appropriations	FY 2012 Expenditures	FY 2012 Appropriations	FY 2012 Expd as of 9/27/13	FY 2013 Appropriations	FY 2014 Appropriations	Difference FY 14 - FY 13
573 Women's Justice Services Fund	\$-	\$30,000	\$-	\$30,000	\$205	\$205	\$30,000	\$55,000	\$65,000	\$10,000
574 Mental Health Special Revenue Fund	93,300	93,300	1,860,000	1,860,000	1,100,000	1,100,000	1,100,000	1,175,000	1,035,000	(140,000)
575 Peer Court Special Revenue Fund	-	1,000	-	45,000	-	-	30,000	1,130,000	1,095,000	(35,000)
576 Drug Court Special Revenue Fund	33,200	33,200	854,000	854,000	480,000	480,000	480,000	650,000	510,000	(140,000)
577 Vehicle Purchase Fund	-	200,000	-	200,000	-	-	200,000	200,000	-	(200,000)
578 Cook County Environmental Management Fund	-	-	-	61,000	40,000	40,000	-	-	-	-
579 Assessor Special Revenue Fund	-	-	-	-	989,904	1,237,508	257,241	750,000	750,000	-
580 Clerk of the Circuit Court Electronic Citation Fund	-	-	-	1,800,000	313,302	600,000	-	450,000	450,000	-
582 Medical Examiner Fees Fund	-	-	500,000	500,000	725,000	725,000	-	-	-	-
583 State's Attorney Records Automation Fund	-	-	-	-	-	-	92,125	100,000	188,000	88,000
584 PD Records Automation Fund	-	-	-	-	-	-	92,113	100,000	188,000	88,000
586 Cook County Land Bank Authority	-	-	-	-	-	-	-	-	1,000,000	1,000,000
590 Annuity and Benefits	186,600,000	186,600,000	192,234,211	192,234,211	196,139,483	196,139,483	194,668,229	192,969,505	194,688,229	1,698,724
853 Bond and Interest	190,760,412	190,760,412	272,080,716	272,080,716	193,532,419	193,532,419	187,384,752	187,384,752	187,384,752	-
800 Less Debt Restructuring	-	-	(85,000,000)	(85,000,000)	-	-	-	-	-	-
Total Special Purpose Funds	\$476,336,540	\$502,916,294	\$499,893,989	\$512,114,292	\$508,028,811	\$520,106,395	\$469,434,875	\$497,973,957	\$503,290,234	\$53,162,277
Total Special Purpose and Election Funds	\$515,899,892	\$545,837,136	\$516,816,938	\$531,797,467	\$548,193,926	\$561,713,043	\$485,693,976	\$517,686,442	\$543,517,718	\$258,831,276
Allowance for Uncollected Taxes **	11,598,042	11,598,042	8,727,160	8,727,160	8,727,160	8,727,160	8,727,160	-	-	-
Restricted Fund (Grants)	160,810,112	160,810,112	185,029,746	185,029,746	148,928,355	148,928,355	148,928,355	134,433,126	161,945,816	27,512,690
Total Operating Fund	\$2,996,944,155	\$3,056,586,488	\$2,906,209,543	\$3,055,084,198	\$2,880,930,010	\$2,955,398,722	\$2,400,005,209	\$2,947,818,327	\$3,206,789,976	\$258,971,649
Capital Improvements	216,318,284	518,971,730	188,739,806	459,605,254	46,315,900	391,689,580	67,803,706	372,020,827	329,438,894	(42,581,933)
Grand Total	\$3,213,262,439	\$3,575,558,218	\$3,094,949,349	\$3,514,689,452	\$2,927,245,910	\$3,347,088,302	\$2,467,809,915	\$3,319,839,154	\$3,536,228,870	\$216,389,716

* FY 2010 - FY 2012 Expenditures are restated to match with Trial Balance. FY 2013 Expenditures are as of 09/27/2013.

**For FY 2013 and FY 2014, Allowance for Uncollected Taxes is netted out of the Property Tax Levy and is not budgeted as an expense.

***Juvenile Temporary Detention Center, department 440 is managed by the Court appointed Transitional Administrator, not the Chief Judge.

SUMMARY OF APPROPRIATIONS AND EXPENDITURES BY CONTROL OFFICER

Control Officers	FY 2010 Expenditures	FY 2010 Appropriations	FY 2011 Expenditures	FY 2011 Appropriations	FY 2012 Expenditures	FY 2012 Appropriations	FY 2013* Expd as of 9/27/13	FY 2013 Appropriations	FY 2014 Appropriations	Difference FY 14 - FY 13
General Fund										
Offices Under the President	\$161,345,966	\$165,921,383	\$146,635,796	\$147,573,178	\$149,801,795	\$144,529,281	\$111,922,788	\$148,305,598	\$151,645,030	\$3,338,432
Elected and Appointed Officials	\$881,813,464	\$919,223,730	\$833,573,336	\$803,083,422	\$852,433,986	\$793,942,708	\$677,626,500	\$842,696,356	\$880,699,616	\$38,103,260
Fixed Charges	\$312,883,372	\$279,345,433	\$350,997,876	\$467,002,994	\$307,821,984	\$403,425,128	\$242,617,304	\$341,137,290	\$343,264,600	\$2,127,310
Total General Fund	\$1,356,042,802	\$1,364,490,546	\$1,331,207,008	\$1,417,669,594	\$1,310,057,765	\$1,341,897,117	\$1,032,166,592	\$1,332,040,244	\$1,375,609,246	\$43,569,002
Enterprise Fund										
Cook County Health & Hospital Systems Board	\$952,593,306	\$973,850,652	\$864,428,692	\$911,860,231	\$865,022,804	\$894,133,047	\$747,711,615	\$963,658,515	\$1,125,717,196	\$162,058,681
Total Enterprise Fund	\$952,593,306	\$973,850,652	\$864,428,692	\$911,860,231	\$865,022,804	\$894,133,047	\$747,711,615	\$963,658,515	\$1,125,717,196	\$162,058,681
Special Purpose and Election Funds										
Offices Under the President	\$408,674,262	\$414,329,000	\$415,333,559	\$417,020,119	\$432,209,214	\$440,394,313	\$416,602,407	\$425,945,625	\$430,876,519	\$4,932,894
Cook County Health & Hospital Systems Board	\$4,952,126	\$9,794,319	\$6,478,871	\$10,045,304	\$5,554,395	\$7,104,872	\$4,116,495	\$7,539,124	\$7,773,910	\$234,786
Elected and Appointed Officials	\$102,273,504	\$121,713,817	\$95,004,508	\$104,732,044	\$110,430,317	\$114,273,858	\$64,974,974	\$84,201,693	\$104,865,289	\$20,663,596
Total Special Purpose and Election Funds	\$515,899,892	\$545,837,136	\$516,816,938	\$531,797,467	\$548,193,926	\$561,713,043	\$485,693,876	\$517,686,442	\$543,517,718	\$25,831,276
Allowance for Uncollected Taxes **	\$11,598,042	11,598,042	8,727,160	\$8,727,160	8,727,160	8,727,160	-	-	-	-
Restricted Fund (Grants)	\$160,810,112	160,810,112	185,029,746	\$185,029,746	148,928,355	148,928,355	134,433,126	134,433,126	161,945,816	27,512,690
Total Operating Fund	\$2,996,944,155	\$3,056,586,488	\$2,906,209,543	\$3,055,084,198	\$2,880,930,010	\$2,955,398,722	\$2,400,005,209	\$2,947,816,327	\$3,206,789,976	\$258,971,649
Capital Improvements	216,318,284	518,971,730	188,739,806	459,605,254	46,315,900	391,689,580	67,803,706	372,020,827	329,438,894	(42,581,933)
Grand Total	\$3,213,262,439	\$3,575,558,218	\$3,094,949,349	\$3,514,689,452	\$2,927,245,910	\$3,347,088,302	\$2,467,808,915	\$3,319,839,154	\$3,536,228,870	\$216,389,716

* FY 2010 - FY 2012 Expenditures are restated to match with Trial Balance. FY2013 Expenditures are as of 09/27/2013.

**For FY 2013 and FY 2014, Allowance for Uncollected Taxes is netted out of the Property Tax Levy and is not budgeted as an expense.

SUMMARY OF APPROPRIATIONS AND EXPENDITURES BY CONTROL OFFICER AND DEPARTMENT

	FY 2010 Expenditures	FY 2010 Appropriations	FY 2011 Expenditures	FY 2011 Appropriations	FY 2012 Expenditures	FY 2012 Appropriations	FY 2013* Expd as of 9/27/13	FY 2013 Appropriations	FY 2014 Appropriations	Difference FY 14 - FY 13
General Fund										
Offices Under the President										
President										
010	\$2,597,108	\$2,362,490	\$1,843,703	\$1,914,072	\$1,583,394	\$1,611,196	\$1,043,702	\$1,569,999	\$1,569,999	\$-
205	943,216	1,207,187	449,745	982,596	635,900	753,675	335,548	438,332	422,948	(15,384)
265	-	-	28,846	-	549,673	878,684	973,316	963,906	1,359,351	395,445
	\$3,540,324	\$3,569,677	\$2,322,294	\$2,896,668	\$2,768,967	\$3,243,555	\$2,352,565	\$2,972,237	\$3,352,298	\$380,061
Chief Administrative Officer										
011	2,065,292	2,303,804	2,679,140	1,819,286	2,883,917	2,570,975	2,246,239	2,636,851	2,712,686	75,735
161	1,544,468	1,681,587	1,425,935	1,651,285	1,447,890	1,607,776	1,257,696	1,613,155	1,637,725	24,570
259	7,106,936	8,586,460	6,582,690	7,363,052	6,729,601	6,877,063	6,236,369	8,339,093	10,428,262	2,089,169
451	796,796	732,899	620,078	664,546	586,096	613,999	514,322	688,361	682,102	(6,259)
500	15,432,849	15,048,718	8,141,780	9,276,334	6,816,980	7,668,170	4,617,857	6,377,733	5,808,469	(569,264)
	\$26,946,341	\$28,353,468	\$19,449,623	\$20,774,503	\$18,464,485	\$19,337,983	\$14,872,483	\$19,655,193	\$21,269,144	\$1,613,951
Chief Financial Officer										
007	2,417,950	2,572,615	2,281,675	2,036,609	2,805,103	2,443,424	1,839,678	2,249,145	2,118,143	(131,002)
008	1,620,144	1,644,544	1,409,893	1,450,076	763,880	827,214	524,253	621,531	701,533	80,002
014	1,341,534	1,561,525	1,149,440	1,149,142	1,291,977	1,154,277	1,239,720	1,468,787	1,466,716	(2,071)
020	2,936,874	3,245,356	2,637,064	2,430,050	2,506,787	2,599,075	1,967,374	2,734,833	2,997,468	262,635
021	832,960	925,592	697,573	808,432	927,311	825,151	1,021,961	1,015,010	1,112,619	97,609
022	864,854	824,931	786,501	799,621	737,239	751,145	544,036	640,588	770,724	130,136
030	1,948,644	2,279,137	1,939,335	2,098,189	1,555,489	1,648,867	1,753,349	2,466,916	2,754,224	287,308
	\$11,962,960	\$13,053,700	\$10,901,482	\$10,772,119	\$10,587,787	\$10,249,153	\$8,890,370	\$11,196,810	\$11,921,427	\$724,617
Chief of Human Resources										
019	206,336	207,184	154,511	168,749	132,809	148,510	57,379	143,959	65,251	(78,708)
032	3,418,753	3,385,312	2,941,558	2,772,606	2,974,080	2,998,748	2,521,989	3,569,611	3,901,060	331,449
	\$3,625,088	\$3,592,496	\$3,096,069	\$2,941,355	\$3,106,889	\$3,147,258	\$2,579,368	\$3,713,570	\$3,966,311	\$252,741
Chief Information Officer										
009	3,483,273	4,941,152	6,516,524	6,177,593	5,988,825	4,949,301	4,240,988	5,185,049	4,259,744	(925,305)
012	5,764,262	6,266,489	-	-	-	-	-	-	-	-
016	2,518,363	2,632,720	5,552,291	5,790,513	4,873,476	5,063,644	4,839,843	6,292,361	6,649,562	357,201
023	1,137,287	1,297,496	-	-	-	-	-	-	-	-
028	-	-	-	-	2,855,865	2,250,702	-	-	-	-
	\$12,903,185	\$15,137,857	\$12,068,814	\$11,968,106	\$13,698,166	\$12,263,647	\$9,080,831	\$11,477,410	\$10,909,306	\$(568,104)

* FY 2010 - FY 2012 Expenditures are restated to match with Trial Balance. FY 2013 Expenditures are as of 09/27/2013.

**For FY 2013 and FY 2014, Allowance for Uncollected Taxes is netted out of the Property Tax Levy and is not budgeted as an expense.

*** Juvenile Temporary Detention Center, department 440 is managed by the Court appointed Transitional Administrator, not the Chief Judge.

SUMMARY OF APPROPRIATIONS AND EXPENDITURES BY CONTROL OFFICER AND DEPARTMENT

	FY 2010 Expenditures	FY 2010 Appropriations	FY 2011 Expenditures	FY 2011 Appropriations	FY 2012 Expenditures	FY 2012 Appropriations	FY 2013* Expd as of 9/27/13	FY 2013 Appropriations	FY 2014 Appropriations	Difference FY 14 - FY 13
Chief of Economic Development										
013 Planning and Development	\$897,589	\$868,402	\$874,935	\$773,510	\$519,040	\$314,882	\$450,262	\$499,686	\$1,055,426	\$555,740
027 Office of Economic Development	-	-	-	-	838,852	1,333,423	508,737	709,684	787,462	77,778
031 Capital Planning and Policy	1,996,540	2,128,706	1,267,423	1,625,873	945,429	929,707	781,914	1,113,829	1,429,568	315,739
160 Building and Zoning	3,331,105	3,511,123	3,260,001	3,431,649	3,269,986	3,222,774	2,525,577	3,200,340	3,184,227	(16,113)
170 Zoning Board of Appeals	450,575	466,114	438,064	504,248	417,917	418,118	346,199	427,413	400,186	(27,227)
Total Chief of Economic Development	\$6,675,808	\$6,974,345	\$5,840,423	\$6,335,280	\$5,991,223	\$6,218,904	\$4,612,889	\$5,950,952	\$6,856,869	\$905,917
Facilities										
200 Department of Facilities Management	36,471,440	34,538,482	33,913,796	37,610,804	36,757,836	35,188,781	27,046,266	34,782,227	35,198,174	415,947
Total Facilities	\$36,471,440	\$34,538,482	\$33,913,796	\$37,610,804	\$36,757,836	\$35,188,781	\$27,046,266	\$34,782,227	\$35,198,174	\$415,947
County Auditor										
070 County Auditor	818,846	918,433	776,128	781,115	731,614	737,420	469,009	903,832	887,093	(16,739)
Total County Auditor	\$818,846	\$918,433	\$776,128	\$781,115	\$731,614	\$737,420	\$469,009	\$903,832	\$887,093	\$(16,739)
Public Defender										
260 Public Defender	56,997,212	58,051,097	56,605,176	51,787,926	55,843,608	52,370,525	40,638,915	55,588,055	55,275,450	(312,605)
Total Public Defender	\$56,997,212	\$58,051,097	\$56,605,176	\$51,787,926	\$55,843,608	\$52,370,525	\$40,638,915	\$55,588,055	\$55,275,450	\$(312,605)
Administrative Hearings										
026 Department of Administrative Hearings	84,1542	927,010	998,888	951,954	1,081,774	995,750	847,998	1,223,074	1,232,356	9,282
Total Administrative Hearings	\$84,1542	\$927,010	\$998,888	\$951,954	\$1,081,774	\$995,750	\$847,998	\$1,223,074	\$1,232,356	\$9,282
Department of Human Rights and Ethics										
002 Department of Human Rights and Ethics	563,219	804,818	663,103	753,348	769,445	776,305	532,293	843,238	776,602	(66,636)
Total Department of Human Rights and Ethics	\$563,219	\$804,818	\$663,103	\$753,348	\$769,445	\$776,305	\$532,293	\$843,238	\$776,602	\$(66,636)
Total Offices Under the President										
	\$161,345,966	\$165,921,383	\$146,635,796	\$147,573,178	\$149,801,795	\$144,529,281	\$111,922,788	\$148,306,598	\$151,645,030	\$3,338,432
Elected and Appointed Officials										
Cook County Board of Commissioners										
018 Office Of The Secretary To The Board of Commissioners	1,155,556	1,207,483	924,929	1,114,619	1,017,950	1,037,415	736,442	1,034,175	1,097,956	63,781
081 First District -Office of the County Commissioner	421,458	434,462	354,241	360,000	354,984	359,673	268,625	358,726	358,726	-
082 Second District -Office of the County Commissioner	363,931	395,781	346,522	360,000	355,469	359,673	241,027	358,905	358,905	-
083 Third District -Office of the County Commissioner	288,759	348,624	238,735	360,000	259,518	359,007	220,960	359,007	358,820	(187)
084 Fourth District -Office of the County Commissioner	356,383	371,079	344,528	360,000	351,197	358,740	248,115	358,740	358,775	35
085 Fifth District -Office of the County Commissioner	419,017	432,033	364,354	360,000	357,713	359,673	257,782	358,558	358,558	-
086 Sixth District -Office of the County Commissioner	417,754	433,607	345,129	360,000	354,675	359,673	263,336	358,583	358,583	-
087 Seventh District -Office of the County Commissioner	483,766	474,138	341,053	360,000	341,583	358,819	250,806	359,052	359,052	-

* FY 2010 - FY 2012 Expenditures are restated to match with Trial Balance. FY2013 Expenditures are as of 09/27/2013.

**For FY 2013 and FY2014, Allowance for Uncollected Taxes is netted out of the Property Tax Levy and is not budgeted as an expense.

***Juvenile Temporary Detention Center, department 440 is managed by the Court appointed Transitional Administrator, not the Chief Judge.

SUMMARY OF APPROPRIATIONS AND EXPENDITURES BY CONTROL OFFICER AND DEPARTMENT

	FY 2010 Expenditures	FY 2010 Appropriations	FY 2011 Expenditures	FY 2011 Appropriations	FY 2012 Expenditures	FY 2012 Appropriations	FY 2013* Expd as of 9/27/13	FY 2013 Appropriations	FY 2014 Appropriations	Difference FY 14 - FY 13
088 Eighth District -Office of the County Commissioner	\$358,524	\$428,833	\$316,361	\$360,000	\$309,742	\$358,904	\$256,521	\$358,919	\$358,847	\$(72)
089 Ninth District -Office of the County Commissioner	354,033	363,399	350,162	360,000	355,082	358,688	277,672	358,683	358,683	-
090 Tenth District -Office of the County Commissioner	314,578	346,585	308,967	360,000	344,657	359,115	235,610	358,928	358,903	(25)
091 Eleventh District -Office of the County Commissioner	378,688	534,948	279,479	500,606	265,894	499,597	203,525	499,597	499,597	-
092 Twelfth District -Office of the County Commissioner	249,287	334,649	309,867	360,000	336,513	359,154	272,956	358,757	358,757	-
093 Thirteenth District -Office of the County Commissioner	355,606	363,082	315,471	360,000	316,875	358,800	256,591	358,885	358,682	(173)
094 Fourteenth District -Office of the County Commissioner	353,449	409,083	318,552	360,000	340,280	358,808	265,949	358,732	358,732	-
095 Fifteenth District -Office of the County Commissioner	314,480	356,328	336,783	360,000	355,168	358,856	248,761	358,824	358,824	-
096 Sixteenth District -Office of the County Commissioner	334,359	331,353	330,526	360,000	337,185	358,873	262,684	358,835	358,835	-
097 Seventeenth District -Office of the County Commissioner	366,736	378,946	348,345	360,000	358,726	359,673	273,806	358,778	358,846	68
Total Cook County Board of Commissioners	\$7,307,364	\$7,944,413	\$6,474,005	\$7,375,225	\$6,713,112	\$7,283,141	\$5,041,169	\$7,274,664	\$7,338,091	\$63,427
Assessor										
040 County Assessor	25,390,951	27,209,441	22,850,880	22,170,253	21,667,543	21,582,137	17,316,045	22,737,234	24,624,799	1,887,565
Total Assessor	\$25,390,951	\$27,209,441	\$22,850,880	\$22,170,253	\$21,667,543	\$21,582,137	\$17,316,045	\$22,737,234	\$24,624,799	\$1,887,565
Board of Review										
050 Board of Review	8,091,878	8,311,088	6,957,462	6,771,874	7,824,773	7,679,750	6,413,681	8,226,970	8,233,141	6,171
Total Board of Review	\$8,091,878	\$8,311,088	\$6,957,462	\$6,771,874	\$7,824,773	\$7,679,750	\$6,413,681	\$8,226,970	\$8,233,141	\$6,171
Chief Judge										
280 Adult Probation Department	42,013,374	44,488,458	34,536,947	34,361,500	37,472,930	35,686,378	26,921,361	34,034,051	37,353,867	3,319,816
300 Judiciary	14,757,167	14,036,399	13,277,667	12,801,005	11,525,667	9,785,886	7,532,618	9,765,924	10,691,946	926,022
305 Public Guardian	17,719,822	17,850,940	17,028,377	16,705,222	17,542,471	16,822,850	13,223,308	17,598,581	17,468,075	(130,506)
310 Office of the Chief Judge	32,085,614	34,245,828	27,096,173	29,044,926	28,757,654	25,731,751	24,741,662	30,408,267	30,516,519	108,252
312 Forensic Clinical Services	2,669,108	3,023,093	2,462,677	2,783,176	2,218,343	2,405,254	1,608,988	2,476,884	2,413,765	(63,119)
313 Social Service	9,644,430	10,043,275	7,384,547	7,414,338	10,654,371	9,973,360	7,942,053	10,203,678	10,505,600	301,922
326 Juvenile Probation and Court Services	34,249,399	35,066,020	29,251,452	30,290,380	30,048,615	29,505,056	24,339,309	30,869,909	31,660,029	790,120
440 Juvenile Temporary Detention Center ***	41,837,129	39,525,228	42,058,349	38,386,506	45,873,784	40,462,696	31,441,276	41,928,602	50,842,085	8,913,483
Total Chief Judge	\$194,976,044	\$198,279,241	\$173,096,189	\$171,787,053	\$184,093,837	\$170,373,231	\$137,750,575	\$177,286,896	\$191,451,886	\$14,165,990
Clerk of the Circuit Court										
335 Clerk of the Circuit Court - Office of the Clerk	77,211,036	80,419,118	74,377,451	74,354,030	74,587,286	71,801,126	58,874,508	73,176,171	74,929,106	1,752,935
Total Clerk of the Circuit Court	\$77,211,036	\$80,419,118	\$74,377,451	\$74,354,030	\$74,587,286	\$71,801,126	\$58,874,508	\$73,176,171	\$74,929,106	\$1,752,935
County Clerk										
110 County Clerk	8,222,282	8,623,560	7,358,765	7,922,678	7,530,761	7,642,414	5,877,358	7,371,477	7,628,320	256,843
Total County Clerk	\$8,222,282	\$8,623,560	\$7,358,765	\$7,922,678	\$7,530,761	\$7,642,414	\$5,877,358	\$7,371,477	\$7,628,320	\$256,843
Recorder of Deeds										

* FY 2010 - FY 2012 Expenditures are restated to match with Trial Balance. FY2013 Expenditures are as of 09/27/2013.

**For FY 2013 and FY2014, Allowance for Uncollected Taxes is netted out of the Property Tax Levy and is not budgeted as an expense.

***Juvenile Temporary Detention Center, department 440 is managed by the Court appointed Transitional Administrator, not the Chief Judge.

SUMMARY OF APPROPRIATIONS AND EXPENDITURES BY CONTROL OFFICER AND DEPARTMENT

	FY 2010 Expenditures	FY 2010 Appropriations	FY 2011 Expenditures	FY 2011 Appropriations	FY 2012 Expenditures	FY 2012 Appropriations	FY 2013* Expd as of 9/27/13	FY 2013 Appropriations	FY 2014 Appropriations	Difference FY 14 - FY 13
130 Recorder of Deeds	\$6,884,825	\$7,652,140	\$5,835,699	\$6,074,135	\$5,614,130	\$5,605,917	\$3,971,949	\$5,555,564	\$5,686,120	\$130,556
Total Recorder of Deeds	\$6,884,825	\$7,652,140	\$5,835,699	\$6,074,135	\$5,614,130	\$5,605,917	\$3,971,949	\$5,555,564	\$5,686,120	\$130,556
Sheriff										
210 Office of the Sheriff	2,226,908	2,297,226	1,908,873	1,367,807	2,269,160	2,127,347	2,477,669	3,144,121	4,899,822	1,755,701
211 Department of Fiscal Administration and Support Services	22,917,613	23,667,199	17,503,144	13,249,507	13,316,272	13,313,622	11,009,549	14,222,245	-	(14,222,245)
212 Sheriff's Women's Justice Programs	8,025,940	8,387,988	7,229,575	7,309,621	6,121,321	5,705,512	6,939,877	8,002,420	-	(8,002,420)
214 Sheriff's Administration and Human Resources	-	-	-	-	-	-	-	-	13,650,155	13,650,155
215 Custodian	10,311,818	11,779,165	124,461	-	-	-	-	-	-	-
217 Sheriff's Information Technology	-	-	-	-	-	-	-	-	4,284,457	4,284,457
230 Court Services Division	87,679,646	93,239,486	84,079,590	80,330,529	87,168,042	81,173,997	68,760,132	85,532,064	85,931,024	398,960
231 Police Department	48,343,105	48,265,764	48,956,593	44,655,201	45,839,132	42,955,595	36,267,156	42,724,556	48,029,191	5,304,635
235 Impact Incarceration	6,671,209	6,910,807	6,499,254	6,544,239	7,005,774	6,426,193	-	-	-	-
236 Reentry and Diversion Programs	28,718,724	28,878,102	28,764,741	26,910,122	15,776,047	16,284,647	19,396,872	21,914,652	-	(2,191,652)
238 Jail Diversion and Crime Prevention	1,622,843	1,836,048	1,528,136	1,570,374	-	-	-	-	-	-
239 Department of Corrections	229,449,040	244,716,331	237,967,861	226,028,868	265,542,082	236,735,994	217,220,609	266,292,793	303,865,830	37,573,037
249 Sheriff's Merit Board	1,163,046	1,291,924	1,434,141	1,429,911	1,309,053	1,260,219	1,372,649	1,682,497	1,795,358	112,861
Total Sheriff	\$447,129,893	\$471,270,060	\$435,996,369	\$409,396,179	\$444,346,883	\$405,963,126	\$363,444,512	\$443,515,348	\$462,455,837	\$19,940,489
State's Attorney										
250 State's Attorney	98,973,452	101,175,133	93,172,992	88,871,814	92,532,832	87,916,142	73,961,287	90,678,192	93,229,590	2,551,398
Total State's Attorney	\$98,973,452	\$101,175,133	\$93,172,992	\$88,871,814	\$92,532,832	\$87,916,142	\$73,961,287	\$90,678,192	\$93,229,590	\$2,551,398
Treasurer										
060 County Treasurer	5,248,666	5,474,200	4,871,929	5,188,503	4,745,395	4,853,014	3,176,169	3,917,499	1,952,814	(1,964,685)
Total Treasurer	\$5,248,666	\$5,474,200	\$4,871,929	\$5,188,503	\$4,745,395	\$4,853,014	\$3,176,169	\$3,917,499	\$1,952,814	\$(1,964,685)
Inspector General										
080 Office of the Independent Inspector General	889,109	1,214,465	1,063,734	1,572,034	1,261,843	1,719,871	1,053,947	1,713,509	1,772,838	59,329
Total Inspector General	\$889,109	\$1,214,465	\$1,063,734	\$1,572,034	\$1,261,843	\$1,719,871	\$1,053,947	\$1,713,509	\$1,772,838	\$59,329
Public Administrator										
390 Public Administrator	1,121,531	1,212,475	1,113,148	1,172,007	1,145,355	1,160,479	745,300	1,143,832	1,097,074	(46,758)
Total Public Administrator	\$1,121,531	\$1,212,475	\$1,113,148	\$1,172,007	\$1,145,355	\$1,160,479	\$745,300	\$1,143,832	\$1,097,074	\$(46,758)
Veterans Assistance Commission										
452 Veterans' Assistance Commission	366,432	438,396	404,712	437,637	370,236	362,360	-	-	300,000	300,000
Total Veterans Assistance Commission	\$366,432	\$438,396	\$404,712	\$437,637	\$370,236	\$362,360	\$0	\$0	\$300,000	\$300,000
Total Elected and Appointed Officials	\$881,813,464	\$919,223,730	\$833,573,336	\$803,093,422	\$852,433,966	\$793,942,708	\$677,626,500	\$842,596,356	\$880,699,616	\$38,103,260

* FY 2010 - FY 2012 Expenditures are restated to match with Trial Balance. FY 2013 Expenditures are as of 09/27/2013.

**For FY 2013 and FY 2014, Allowance for Uncollected Taxes is netted out of the Property Tax Levy and is not budgeted as an expense.

***Juvenile Temporary Detention Center, department 440 is managed by the Court appointed Transitional Administrator, not the Chief Judge.

SUMMARY OF APPROPRIATIONS AND EXPENDITURES BY CONTROL OFFICER AND DEPARTMENT

	FY 2010 Expenditures	FY 2010 Appropriations	FY 2011 Expenditures	FY 2011 Appropriations	FY 2012 Expenditures	FY 2012 Appropriations	FY 2013* Expd as of 9/27/13	FY 2013 Appropriations	FY 2014 Appropriations	Difference FY 14 - FY 13
Fixed Charges										
Fixed Charges And Special Purpose Appropriations										
490	\$68,675,287	\$71,571,624	\$31,972,182	\$62,729,988	\$53,146,130	\$58,443,830	\$40,630,489	\$40,784,692	\$55,239,935	\$14,455,243
	Corporate									
499	244,208,085	207,773,809	319,025,694	404,273,006	254,675,855	344,981,298	201,986,815	300,352,598	288,024,665	(12,327,933)
	Public Safety									
	Total Fixed Charges And Special Purpose	\$312,883,372	\$279,345,433	\$350,997,876	\$467,002,994	\$307,821,984	\$242,617,304	\$341,137,290	\$343,264,600	\$2,127,310
	Total Fixed Charges	\$312,883,372	\$279,345,433	\$350,997,876	\$467,002,994	\$307,821,984	\$242,617,304	\$341,137,290	\$343,264,600	\$2,127,310
	Total General Fund	\$1,356,042,802	\$1,364,490,346	\$1,331,207,008	\$1,417,669,594	\$1,310,057,765	\$1,032,166,592	\$1,332,040,244	\$1,375,609,246	\$43,569,002
Enterprise Fund										
Cook County Health & Hospital Systems Board										
Cook County Health & Hospital System										
240	32,053,056	41,278,455	33,983,507	41,238,218	38,517,570	40,113,122	31,085,939	40,864,509	46,630,843	5,766,334
	Cermak Health Services of Cook County									
241	2,692,666	3,677,600	2,819,502	3,541,587	3,098,507	3,920,113	2,408,007	3,876,605	3,910,387	33,782
	Health Services - JTDC									
890	177,294,308	140,648,324	139,876,960	147,622,343	154,760,022	168,676,467	139,837,689	154,886,527	189,471,395	34,584,868
	Health System Administration									
891	72,294,061	97,052,895	56,626,298	67,054,238	47,915,652	51,492,542	35,795,017	49,475,456	48,357,796	(1,117,660)
	Provident Hospital of Cook County									
893	44,653,300	51,793,734	42,886,097	51,768,786	44,183,061	47,067,401	38,511,917	51,815,924	51,465,467	(350,457)
	Ambulatory and Community Health Network of Cook County									
894	11,141,526	11,841,106	10,906,996	11,865,274	11,087,303	11,844,779	9,644,504	11,698,210	11,753,051	54,841
	Ruth M. Rothenstein CORE Center									
895	15,533,725	17,438,553	15,835,994	17,678,034	15,469,700	17,164,364	9,693,215	16,107,119	14,450,251	(1,656,868)
	Department of Public Health									
896	-	-	-	-	-	-	-	-	-	-
	Managed Care									
897	398,237,817	436,765,313	400,649,112	421,968,840	416,121,502	429,771,321	325,704,885	425,624,711	445,202,520	19,577,809
	John H. Stroger, Jr. Hospital of Cook County									
898	70,041,043	90,459,606	50,776,045	52,367,379	26,471,791	35,180,850	8,702,520	12,438,287	11,216,096	(1,222,191)
	Oak Forest Health Center of Cook County									
899	128,651,805	82,895,066	110,068,180	96,755,532	107,397,696	88,902,088	83,950,232	100,706,267	112,455,101	11,748,834
	Fixed Charges and Special Purpose Appropriations - Health									
	Total Cook County Health & Hospital System	\$952,593,306	\$973,850,652	\$864,428,692	\$911,860,231	\$865,022,804	\$747,711,615	\$963,658,515	\$1,125,717,196	\$162,058,681
	Total Cook County Health & Hospital Systems Board	\$952,593,306	\$973,850,652	\$864,428,692	\$911,860,231	\$865,022,804	\$747,711,615	\$963,658,515	\$1,125,717,196	\$162,058,681
	Total Enterprise Fund	\$952,593,306	\$973,850,652	\$864,428,692	\$911,860,231	\$865,022,804	\$747,711,615	\$963,658,515	\$1,125,717,196	\$162,058,681
Special Purpose and Election Funds										
Offices Under the President										
President										
565	1,478,907	1,016,638	853,978	853,976	12,896	-	-	-	-	-
	Department of Homeland Security and Emergency Management									
	Total President	\$1,478,907	\$1,016,638	\$853,978	\$853,976	\$12,896	\$0	\$0	\$0	\$0
Chief Administrative Officer										
501	13,148,724	14,652,754	19,308,915	21,027,216	20,923,652	21,946,330	15,491,608	21,960,729	22,748,938	788,209
	MFT Illinois First (1st)									
510	2,367,807	2,990,557	2,938,422	3,077,974	2,317,954	3,161,093	2,370,985	3,411,065	3,452,832	41,767
	Animal Control Department									

* FY 2010 - FY 2012 Expenditures are restated to match with Trial Balance. FY 2013 Expenditures are as of 09/27/2013.

**For FY 2013 and FY2014, Allowance for Uncollected Taxes is netted out of the Property Tax Levy and is not budgeted as an expense.

***Juvenile Temporary Detention Center, department 440 is managed by the Court appointed Transitional Administrator, not the Chief Judge.

SUMMARY OF APPROPRIATIONS AND EXPENDITURES BY CONTROL OFFICER AND DEPARTMENT

	FY 2010		FY 2011		FY 2012		FY 2012*		FY 2013		FY 2014		Difference	
	Expenditures	Appropriations	Expenditures	Appropriations	Expenditures	Appropriations	Expend as of 9/27/13	Appropriations	Appropriations	Appropriations	Appropriations	Appropriations	Appropriations	FY 14 - FY 13
530 Cook County Law Library	\$5,081,641	\$5,863,622	\$6,913,793	\$6,133,209	\$6,459,321	\$6,955,212	\$3,718,466	\$6,846,942	\$6,003,918	\$6,003,918	\$6,003,918	\$6,003,918	\$6,003,918	\$(843,024)
578 Cook County Environmental Management Fund	-	-	-	61,000	40,000	40,000	-	-	-	-	-	-	-	-
582 Medical Examiner Fees Fund	-	-	500,000	500,000	725,000	725,000	-	-	-	-	-	-	-	-
Total Chief Administrative Officer	\$20,598,172	\$23,506,933	\$29,861,130	\$30,799,399	\$30,465,927	\$32,827,635	\$21,581,049	\$32,218,736	\$32,205,688	\$32,205,688	\$32,205,688	\$32,205,688	\$32,205,688	\$(13,048)
Chief Financial Officer														
542 Self - Insurance Fund	93,433	-	(1,415)	-	500,717	-	4,707,096	-	-	-	-	-	-	-
Total Chief Financial Officer	\$93,433	\$0	\$(1,415)	\$0	\$500,717	\$0	\$4,707,096	\$0	\$0	\$0	\$0	\$0	\$0	\$0
Chief Information Officer														
545 Geographic Information Systems	9,143,339	12,445,017	5,504,939	6,051,817	11,557,773	17,834,776	8,169,169	13,272,632	15,461,850	15,461,850	15,461,850	15,461,850	15,461,850	2,189,218
Total Chief Information Officer	\$9,143,339	\$12,445,017	\$5,504,939	\$6,051,817	\$11,557,773	\$17,834,776	\$8,169,169	\$13,272,632	\$15,461,850	\$15,461,850	\$15,461,850	\$15,461,850	\$15,461,850	\$2,189,218
Other Funds														
590 Annuity and Benefits	186,600,000	186,600,000	192,234,211	192,234,211	196,139,483	196,139,483	194,668,229	192,969,505	194,668,229	194,668,229	194,668,229	194,668,229	194,668,229	1,698,724
853 Bond and Interest	190,760,412	190,760,412	272,080,716	272,080,716	193,532,419	193,532,419	187,384,752	187,384,752	187,384,752	187,384,752	187,384,752	187,384,752	187,384,752	-
800 Less Debt Restructuring	-	-	(85,000,000)	(85,000,000)	-	-	-	-	-	-	-	-	-	-
Total Other Funds	\$377,360,412	\$377,360,412	\$379,314,927	\$379,314,927	\$389,671,902	\$389,671,902	\$382,052,981	\$380,354,257	\$382,052,981	\$382,052,981	\$382,052,981	\$382,052,981	\$382,052,981	\$1,698,724
Public Defender														
584 PD Records Automation Fund	-	-	-	-	-	-	92,113	100,000	158,000	158,000	158,000	158,000	158,000	58,000
Total Public Defender	\$0	\$0	\$0	\$0	\$0	\$0	\$92,113	\$100,000	\$158,000	\$158,000	\$158,000	\$158,000	\$158,000	\$58,000
Cook County Land Bank Authority														
586 Cook County Land Bank Authority	-	-	-	-	-	-	-	-	1,000,000	1,000,000	1,000,000	1,000,000	1,000,000	1,000,000
Total Cook County Land Bank Authority	\$0	\$0	\$0	\$0	\$0	\$0	\$0	\$0	\$1,000,000	\$1,000,000	\$1,000,000	\$1,000,000	\$1,000,000	\$1,000,000
Total Offices Under the President	\$408,874,262	\$414,329,000	\$415,333,559	\$417,020,119	\$432,209,214	\$440,334,313	\$416,602,407	\$425,945,625	\$430,878,519	\$430,878,519	\$430,878,519	\$430,878,519	\$430,878,519	\$4,932,894
Cook County Health & Hospital Systems Board														
Cook County Health & Hospital System														
544 Lead Poisoning Prevention Fund	1,063,726	3,775,173	1,046,542	2,965,553	1,076,225	1,388,957	892,724	1,872,298	1,227,008	1,227,008	1,227,008	1,227,008	1,227,008	(645,290)
564 TB Sanitarium District	3,888,400	6,019,146	5,432,328	7,079,751	4,478,170	5,715,915	3,223,771	5,666,826	6,546,902	6,546,902	6,546,902	6,546,902	6,546,902	880,076
Total Cook County Health & Hospital System	\$4,952,126	\$9,794,319	\$6,478,871	\$10,045,304	\$5,554,395	\$7,104,872	\$4,116,495	\$7,539,124	\$7,773,910	\$7,773,910	\$7,773,910	\$7,773,910	\$7,773,910	\$234,786
Total Cook County Health & Hospital Systems Board	\$4,952,126	\$9,794,319	\$6,478,871	\$10,045,304	\$5,554,395	\$7,104,872	\$4,116,495	\$7,539,124	\$7,773,910	\$7,773,910	\$7,773,910	\$7,773,910	\$7,773,910	\$234,786
Elected and Appointed Officials														
Assessor														
579 Assessor Special Revenue Fund	-	-	-	-	989,904	1,237,508	257,241	750,000	750,000	750,000	750,000	750,000	750,000	-
Total Assessor	\$0	\$0	\$0	\$0	\$989,904	\$1,237,508	\$257,241	\$750,000	\$750,000	\$750,000	\$750,000	\$750,000	\$750,000	\$0
Board of Election Commissioners														
525 Board of Election Commissioners - Election Fund	17,340,954	17,615,482	478,573	482,852	16,887,603	17,397,209	1,309,239	908,102	16,189,445	16,189,445	16,189,445	16,189,445	16,189,445	15,281,343

* FY 2010 - FY 2012 Expenditures are restated to match with Trial Balance. FY 2013 Expenditures are as of 09/27/2013.

**For FY 2013 and FY 2014, Allowance for Uncollected Taxes is netted out of the Property Tax Levy and is not budgeted as an expense.

***Juvenile Temporary Detention Center, department 440 is managed by the Court appointed Transitional Administrator, not the Chief Judge.

SUMMARY OF APPROPRIATIONS AND EXPENDITURES BY CONTROL OFFICER AND DEPARTMENT

	FY 2010 Expenditures	FY 2010 Appropriations	FY 2011 Expenditures	FY 2011 Appropriations	FY 2012 Expenditures	FY 2012 Appropriations	FY 2013* Expd as of 9/27/13	FY 2013 Appropriations	FY 2014 Appropriations	Difference FY 14 - FY 13
Total Board of Election Commissioners	\$17,340,954	\$17,615,482	\$478,573	\$482,852	\$16,887,603	\$17,397,209	\$1,309,239	\$908,102	\$16,189,445	\$15,281,343
Chief Judge										
531 Circuit Court - Illinois Dispute Resolution Fund	\$200,000	\$200,000	\$708,103	\$700,277	\$300,000	\$400,000	\$200,000	\$280,000	\$225,000	\$155,000
532 Adult Probation/Probation Service Fee Fund	2,826,384	3,939,583	6,160,438	6,416,400	3,416,367	3,313,898	3,819,371	5,887,346	4,324,062	(1,563,294)
538 Juvenile Probation - Supplementary Officers	3,067,089	2,846,605	5,720,317	6,915,603	6,840,238	6,768,931	3,746,373	4,484,285	3,240,516	(1,243,769)
541 Social Service/Probation and Court Services Fund	3,771,392	4,057,848	5,242,704	5,376,087	2,128,972	2,749,049	2,424,017	3,190,049	2,944,994	(245,055)
572 Children's Waiting Room Revenue Fund	1,440,582	1,441,500	7,416,750	7,303,534	3,086,010	3,206,879	1,430,143	1,934,515	3,085,407	1,150,892
574 Mental Health Special Revenue Fund	93,300	93,300	1,860,000	1,860,000	1,100,000	1,100,000	900,000	1,175,000	1,035,000	(140,000)
575 Peer Court Special Revenue Fund	-	1,000	-	45,000	-	30,000	565,000	1,130,000	1,095,000	(35,000)
576 Drug Court Special Revenue Fund	33,200	33,200	854,000	854,000	480,000	480,000	525,000	650,000	510,000	(140,000)
Total Chief Judge	\$11,431,947	\$12,615,036	\$27,962,312	\$29,470,901	\$17,351,587	\$18,048,757	\$13,609,904	\$18,731,195	\$16,459,969	\$(2,271,226)
Clerk of the Circuit Court										
528 Clerk of the Circuit Court Automation Fund	18,006,834	21,324,354	15,297,996	15,198,394	12,987,788	13,021,447	8,166,834	9,336,276	10,617,929	1,281,653
529 Clerk of the Circuit Court Document Storage Fund	12,969,135	20,545,849	14,822,242	15,915,399	14,741,624	15,846,600	7,403,440	9,409,841	9,842,419	432,578
567 Clerk of the Circuit Court Administrative Fund	1,175,887	1,219,682	1,172,884	1,145,068	922,250	889,018	542,671	631,571	730,369	98,798
580 Clerk of the Circuit Court Electronic Citation Fund	-	-	-	1,800,000	313,302	600,000	-	450,000	450,000	-
Total Clerk of the Circuit Court	\$32,151,856	\$43,089,865	\$31,293,122	\$34,058,861	\$28,964,965	\$30,357,065	\$16,112,944	\$19,827,688	\$21,640,717	\$1,813,029
County Clerk										
524 County Clerk - Elections Division Fund	22,222,398	25,305,360	16,444,376	19,200,323	23,277,513	24,209,439	14,949,762	18,804,383	24,038,039	5,233,656
533 County Clerk - Automation Fund	764,772	1,059,150	1,326,191	1,592,205	1,137,616	1,297,273	925,770	1,398,057	1,573,300	175,243
Total County Clerk	\$22,987,170	\$26,364,510	\$17,770,566	\$20,792,528	\$24,415,128	\$25,506,712	\$15,875,532	\$20,202,440	\$25,611,339	\$5,408,899
Recorder of Deeds										
527 County Recorder Document Storage System Fund	4,413,372	5,727,916	3,019,312	2,965,658	2,755,954	2,729,796	2,364,795	3,231,719	4,771,195	1,539,476
570 GIS Fee Fund	160,912	212,902	2,196,138	2,176,575	2,382,414	2,504,892	2,032,468	2,638,445	3,599,488	961,043
571 Rental Housing Support Fee Fund	140,299	149,204	540,086	479,617	335,609	482,591	183,173	346,506	576,867	230,361
Total Recorder of Deeds	\$4,714,583	\$6,090,022	\$5,755,536	\$5,621,850	\$5,473,976	\$5,717,279	\$4,580,436	\$6,216,670	\$8,947,550	\$2,730,880
Sheriff										
535 Intergovernmental Agreement/ETSB	1,465,944	1,247,080	1,846,687	1,570,336	4,248,207	3,403,181	3,055,898	3,141,002	1,141,335	(1,999,667)
546 Sheriff's Youthful Offender Alcohol & Drug Education	6,012	9,396	849	9,018	-	8,635	-	2,400	2,400	-
573 Women's Justice Services Fund	-	30,000	-	30,000	205	30,000	-	55,000	65,000	10,000
577 Vehicle Purchase Fund	-	200,000	-	200,000	-	200,000	-	200,000	-	(200,000)
Total Sheriff	\$1,471,957	\$1,486,476	\$1,847,536	\$1,809,354	\$4,248,412	\$3,641,816	\$3,055,898	\$3,398,402	\$1,208,735	\$(2,189,667)
State's Attorney										
561 State's Attorney Narcotics Forfeiture	2,980,927	3,268,993	3,146,547	3,455,853	3,940,610	3,384,472	3,088,871	4,117,230	4,227,001	109,771

* FY 2010 - FY 2012 Expenditures are restated to match with Trial Balance. FY 2013 Expenditures are as of 09/27/2013.

**For FY 2013 and FY 2014, Allowance for Uncollected Taxes is netted out of the Property Tax Levy and is not budgeted as an expense.

***Juvenile Temporary Detention Center, department 440 is managed by the Court appointed Transitional Administrator, not the Chief Judge.

SUMMARY OF APPROPRIATIONS AND EXPENDITURES BY CONTROL OFFICER AND DEPARTMENT

	FY 2010		FY 2011		FY 2012		FY 2012*		FY 2013		FY 2014		Difference	
	Expenditures	Appropriations	Expenditures	Appropriations	Expenditures	Appropriations	Expend as of 9/27/13	Appropriations	Appropriations	Appropriations	Appropriations	Appropriations	Appropriations	FY 14 - FY 13
562 State's Attorney Bad Check Diversion Program	\$362,265	\$584,213	\$239,541	\$351,884	\$29,024	\$74,851	\$74,851	\$200,000	\$67,000	\$200,000	\$67,000	\$67,000	\$67,000	\$(133,000)
566 State's Attorney Capital Litigation Trust Fund	2,034,687	2,973,560	(634,877)	-	-	-	-	-	-	-	-	-	-	-
583 State's Attorney Records Automation Fund	-	-	-	-	-	92,125	92,125	100,000	158,000	100,000	158,000	158,000	158,000	58,000
Total State's Attorney	\$5,377,880	\$6,826,766	\$2,751,211	\$3,807,737	\$3,969,634	\$3,255,847	\$3,255,847	\$4,417,230	\$4,452,001	\$4,417,230	\$4,452,001	\$4,452,001	\$4,452,001	\$34,771
Treasurer														
534 County Treasurer - Tax Sales Automation Fund	6,797,157	7,625,660	7,145,651	8,687,961	8,129,107	6,917,932	6,917,932	9,749,966	9,605,533	9,749,966	9,605,533	9,605,533	9,605,533	(144,433)
Total Treasurer	\$6,797,157	\$7,625,660	\$7,145,651	\$8,687,961	\$8,129,107	\$6,917,932	\$6,917,932	\$9,749,966	\$9,605,533	\$9,749,966	\$9,605,533	\$9,605,533	\$9,605,533	\$(144,433)
Total Elected and Appointed Officials	\$102,273,504	\$121,713,817	\$85,004,508	\$104,732,044	\$110,430,317	\$64,974,974	\$64,974,974	\$84,201,693	\$104,865,289	\$84,201,693	\$104,865,289	\$104,865,289	\$104,865,289	\$20,663,596
Total Special Purpose and Election Funds	\$515,899,892	\$545,837,136	\$516,816,938	\$531,797,467	\$548,193,926	\$561,713,043	\$485,693,876	\$517,686,442	\$543,517,718	\$517,686,442	\$543,517,718	\$543,517,718	\$543,517,718	\$25,831,276
Allowance for Uncollected Taxes **	11,598,042	11,598,042	8,727,160	8,727,160	8,727,160	8,727,160	134,433,126	134,433,126	161,945,816	134,433,126	161,945,816	161,945,816	161,945,816	27,512,690
Restricted Fund (Grants)	160,810,112	160,810,112	185,029,746	185,029,746	148,928,355	148,928,355	148,928,355	148,928,355	329,438,894	134,433,126	329,438,894	329,438,894	329,438,894	(42,581,933)
Capital Improvements	216,318,284	518,971,730	188,739,806	459,605,254	46,315,900	391,689,580	67,803,706	372,020,827	329,438,894	372,020,827	329,438,894	329,438,894	329,438,894	(42,581,933)
Total Operating Funds	\$2,996,944,155	\$3,056,566,468	\$2,906,209,543	\$3,055,084,198	\$2,880,830,010	\$2,955,398,722	\$2,400,005,209	\$2,947,816,327	\$3,206,789,976	\$2,947,816,327	\$3,206,789,976	\$3,206,789,976	\$3,206,789,976	\$258,871,649
Grand Total	\$3,213,262,439	\$3,575,558,218	\$3,094,949,349	\$3,514,689,452	\$2,927,245,910	\$3,347,088,302	\$2,467,808,915	\$3,319,839,154	\$3,536,228,870	\$3,319,839,154	\$3,536,228,870	\$3,536,228,870	\$3,536,228,870	\$216,389,716

* FY 2010 - FY 2012 Expenditures are restated to match with Trial Balance. FY 2013 Expenditures are as of 09/27/2013.

**For FY 2013 and FY 2014, Allowance for Uncollected Taxes is netted out of the Property Tax Levy and is not budgeted as an expense.

***Juvenile Temporary Detention Center, department 440 is managed by the Court appointed Transitional Administrator, not the Chief Judge.

SUMMARY OF APPROPRIATIONS BY CONTROL OFFICER AND PROGRAM AREA

Departments	GENERAL GOVERNMENT, FINANCE AND ADMINISTRATION	HEALTHCARE	PUBLIC SAFETY	PROPERTY AND TAXATION	ECONOMIC DEVELOPMENT	FIXED CHARGES AND OTHERS	TOTAL
General Fund							
Offices Under the President							
President							
010 Office of the President	\$1,569,999	\$-	\$-	\$-	\$-	\$-	\$1,569,999
205 Justice Advisory Council	422,948	-	-	-	-	-	422,948
265 Department of Homeland Security and Emergency Management - General Fund	-	-	1,359,351	-	-	-	1,359,351
Total President	\$1,992,947	\$0	\$1,359,351	\$0	\$0	\$0	\$3,352,298
Chief Administrative Officer							
011 Office of the Chief Administrative Officer	2,712,586	-	-	-	-	-	2,712,586
161 Department of Environmental Control	1,637,725	-	-	-	-	-	1,637,725
259 Medical Examiner	10,428,262	-	-	-	-	-	10,428,262
451 Office of Adoption and Child Custody Advocacy	682,102	-	-	-	-	-	682,102
500 Department of Transportation and Highways	5,808,469	-	-	-	-	-	5,808,469
Total Chief Administrative Officer	\$21,269,144	\$0	\$0	\$0	\$0	\$0	\$21,269,144
Chief Financial Officer							
007 Revenue	2,118,143	-	-	-	-	-	2,118,143
008 Risk Management	701,533	-	-	-	-	-	701,533
014 Budget and Management Services	1,466,716	-	-	-	-	-	1,466,716
020 County Comptroller	2,997,468	-	-	-	-	-	2,997,468
021 Office of the Chief Financial Officer	1,112,619	-	-	-	-	-	1,112,619
022 Contract Compliance	770,724	-	-	-	-	-	770,724
030 Office of the Chief Procurement Officer	2,754,224	-	-	-	-	-	2,754,224
Total Chief Financial Officer	\$11,921,427	\$0	\$0	\$0	\$0	\$0	\$11,921,427
Chief of Human Resources							
019 Employee Appeals Board	65,251	-	-	-	-	-	65,251
032 Department of Human Resources	3,901,060	-	-	-	-	-	3,901,060
Total Chief of Human Resources	\$3,966,311	\$0	\$0	\$0	\$0	\$0	\$3,966,311
Chief Information Officer							
009 Technology Policy & Planning	4,259,744	-	-	-	-	-	4,259,744
016 IT Solutions & Services	6,649,562	-	-	-	-	-	6,649,562
Total Chief Information Officer	\$10,909,306	\$0	\$0	\$0	\$0	\$0	\$10,909,306
Chief of Economic Development							
013 Planning and Development	-	-	-	-	1,055,426	-	1,055,426

*Juvenile Temporary Detention Center, department 440 is managed by the Court appointed Transitional Administrator, not the Chief Judge.

SUMMARY OF APPROPRIATIONS BY CONTROL OFFICER AND PROGRAM AREA

Departments	GENERAL GOVERNMENT, FINANCE AND ADMINISTRATION					PROPERTY AND TAXATION	ECONOMIC DEVELOPMENT	FIXED CHARGES AND OTHERS	TOTAL
	GENERAL GOVERNMENT, FINANCE AND ADMINISTRATION	HEALTHCARE	PUBLIC SAFETY	PROPERTY AND TAXATION	ECONOMIC DEVELOPMENT				
027 Office of Economic Development	\$-	\$-	\$-	\$-	\$-	\$787,462	\$-	\$787,462	\$787,462
031 Capital Planning and Policy	-	-	-	-	-	1,429,568	-	1,429,568	1,429,568
160 Building and Zoning	-	-	-	-	-	3,184,227	-	3,184,227	3,184,227
170 Zoning Board of Appeals	-	-	-	-	-	400,186	-	400,186	400,186
Total Chief of Economic Development	\$0	\$0	\$0	\$0	\$0	\$6,856,869	\$0	\$6,856,869	\$6,856,869
Facilities									
200 Department of Facilities Management	-	-	35,198,174	-	-	-	-	-	35,198,174
Total Facilities	\$0	\$0	\$35,198,174	\$0	\$0	\$0	\$0	\$0	\$35,198,174
County Auditor									
070 County Auditor	887,093	-	-	-	-	-	-	-	887,093
Total County Auditor	\$887,093	\$0	\$0	\$0	\$0	\$0	\$0	\$0	\$887,093
Public Defender									
260 Public Defender	-	-	55,275,450	-	-	-	-	-	55,275,450
Total Public Defender	\$0	\$0	\$55,275,450	\$0	\$0	\$0	\$0	\$0	\$55,275,450
Administrative Hearings									
026 Department of Administrative Hearings	1,232,356	-	-	-	-	-	-	-	1,232,356
Total Administrative Hearings	\$1,232,356	\$0	\$0	\$0	\$0	\$0	\$0	\$0	\$1,232,356
Department of Human Rights and Ethics									
002 Department of Human Rights and Ethics	776,602	-	-	-	-	-	-	-	776,602
Total Department of Human Rights and Ethics	\$776,602	\$0	\$0	\$0	\$0	\$0	\$0	\$0	\$776,602
Total Offices Under the President	\$52,955,186	\$-	\$91,832,975	\$-	\$-	\$6,856,869	\$-	\$151,645,030	\$151,645,030
Elected and Appointed Officials									
Cook County Board of Commissioners									
018 Office Of The Secretary To The Board of Commissioners	1,097,956	-	-	-	-	-	-	-	1,097,956
081 First District -Office of the County Commissioner	358,726	-	-	-	-	-	-	-	358,726
082 Second District -Office of the County Commissioner	358,905	-	-	-	-	-	-	-	358,905
083 Third District -Office of the County Commissioner	358,820	-	-	-	-	-	-	-	358,820
084 Fourth District -Office of the County Commissioner	358,775	-	-	-	-	-	-	-	358,775
085 Fifth District -Office of the County Commissioner	358,568	-	-	-	-	-	-	-	358,568
086 Sixth District -Office of the County Commissioner	358,583	-	-	-	-	-	-	-	358,583
087 Seventh District -Office of the County Commissioner	358,052	-	-	-	-	-	-	-	358,052
088 Eighth District -Office of the County Commissioner	358,847	-	-	-	-	-	-	-	358,847
089 Ninth District -Office of the County Commissioner	358,683	-	-	-	-	-	-	-	358,683

*Juvenile Temporary Detention Center, department 440 is managed by the Court appointed Transitional Administrator, not the Chief Judge.

SUMMARY OF APPROPRIATIONS BY CONTROL OFFICER AND PROGRAM AREA

Departments	GENERAL GOVERNMENT, FINANCE AND ADMINISTRATION					PROPERTY AND TAXATION	ECONOMIC DEVELOPMENT	FIXED CHARGES AND OTHERS	TOTAL
	GENERAL GOVERNMENT, FINANCE AND ADMINISTRATION	HEALTHCARE	PUBLIC SAFETY	PROPERTY AND TAXATION	ECONOMIC DEVELOPMENT				
090 Tenth District - Office of the County Commissioner	\$358,903	\$-	\$-	\$-	\$-	\$-	\$-	\$358,903	
091 Eleventh District - Office of the County Commissioner	499,597	-	-	-	-	-	-	499,597	
092 Twelfth District - Office of the County Commissioner	358,757	-	-	-	-	-	-	358,757	
093 Thirteenth District - Office of the County Commissioner	358,692	-	-	-	-	-	-	358,692	
094 Fourteenth District - Office of the County Commissioner	358,732	-	-	-	-	-	-	358,732	
095 Fifteenth District - Office of the County Commissioner	358,824	-	-	-	-	-	-	358,824	
096 Sixteenth District - Office of the County Commissioner	358,835	-	-	-	-	-	-	358,835	
097 Seventeenth District - Office of the County Commissioner	358,846	-	-	-	-	-	-	358,846	
Total Cook County Board of Commissioners	\$7,338,091	\$0	\$0	\$0	\$0	\$0	\$0	\$7,338,091	
Assessor									
040 County Assessor	-	-	-	24,624,799	-	-	-	24,624,799	
Total Assessor	\$0	\$0	\$0	\$24,624,799	\$0	\$0	\$0	\$24,624,799	
Board of Review									
050 Board of Review	-	-	-	8,233,141	-	-	-	8,233,141	
Total Board of Review	\$0	\$0	\$0	\$8,233,141	\$0	\$0	\$0	\$8,233,141	
Chief Judge									
280 Adult Probation Department	-	-	37,353,867	-	-	-	-	37,353,867	
300 Judiciary	-	-	10,691,946	-	-	-	-	10,691,946	
305 Public Guardian	-	-	17,468,075	-	-	-	-	17,468,075	
310 Office of the Chief Judge	-	-	30,516,519	-	-	-	-	30,516,519	
312 Forensic Clinical Services	-	-	2,413,765	-	-	-	-	2,413,765	
313 Social Service	-	-	10,505,600	-	-	-	-	10,505,600	
326 Juvenile Probation and Court Services	-	-	31,660,029	-	-	-	-	31,660,029	
440 Juvenile Temporary Detention Center*	-	-	50,842,085	-	-	-	-	50,842,085	
Total Chief Judge	\$0	\$0	\$191,451,886	\$0	\$0	\$0	\$0	\$191,451,886	
Clerk of the Circuit Court									
335 Clerk of the Circuit Court - Office of the Clerk	-	-	74,929,106	-	-	-	-	74,929,106	
Total Clerk of the Circuit Court	\$0	\$0	\$74,929,106	\$0	\$0	\$0	\$0	\$74,929,106	
County Clerk									
110 County Clerk	-	-	-	7,628,320	-	-	-	7,628,320	
Total County Clerk	\$0	\$0	\$0	\$7,628,320	\$0	\$0	\$0	\$7,628,320	
Recorder of Deeds									
130 Recorder of Deeds	-	-	-	5,686,120	-	-	-	5,686,120	

*Juvenile Temporary Detention Center, department 440 is managed by the Court appointed Transitional Administrator, not the Chief Judge.

SUMMARY OF APPROPRIATIONS BY CONTROL OFFICER AND PROGRAM AREA

Departments	GENERAL GOVERNMENT, FINANCE AND ADMINISTRATION	HEALTHCARE	PUBLIC SAFETY	PROPERTY AND TAXATION	ECONOMIC DEVELOPMENT	FIXED CHARGES AND OTHERS	TOTAL
Sheriff							
Total Recorder of Deeds	\$0	\$0	\$0	\$5,686,120	\$0	\$0	\$5,686,120
210 Office of the Sheriff	\$-	\$-	\$4,899,822	\$-	\$-	\$-	\$4,899,822
214 Sheriff's Administration and Human Resources	-	-	13,650,155	-	-	-	13,650,155
217 Sheriff's Information Technology	-	-	4,284,457	-	-	-	4,284,457
230 Court Services Division	-	-	85,931,024	-	-	-	85,931,024
231 Police Department	-	-	48,029,191	-	-	-	48,029,191
239 Department of Corrections	-	-	303,865,830	-	-	-	303,865,830
249 Sheriff's Merit Board	-	-	1,795,358	-	-	-	1,795,358
Total Sheriff	\$0	\$0	\$462,455,837	\$0	\$0	\$0	\$462,455,837
State's Attorney							
250 State's Attorney	-	-	93,229,590	-	-	-	93,229,590
Total State's Attorney	\$0	\$0	\$93,229,590	\$0	\$0	\$0	\$93,229,590
Treasurer							
060 County Treasurer	-	-	-	1,952,814	-	-	1,952,814
Total Treasurer	\$0	\$0	\$0	\$1,952,814	\$0	\$0	\$1,952,814
Inspector General							
080 Office of the Independent Inspector General	1,772,838	-	-	-	-	-	1,772,838
Total Inspector General	\$1,772,838	\$0	\$0	\$0	\$0	\$0	\$1,772,838
Public Administrator							
390 Public Administrator	-	-	1,097,074	-	-	-	1,097,074
Total Public Administrator	\$0	\$0	\$1,097,074	\$0	\$0	\$0	\$1,097,074
Veterans Assistance Commission							
452 Veterans' Assistance Commission	300,000	-	-	-	-	-	300,000
Total Veterans Assistance Commission	\$300,000	\$0	\$0	\$0	\$0	\$0	\$300,000
Total Elected and Appointed Officials	\$9,410,929	\$-	\$823,163,493	\$48,125,194	\$-	\$-	\$880,699,616
Fixed Charges							
Fixed Charges And Special Purpose Appropriations							
490 Fixed Charges and Special Purpose Appropriations - Corporate	-	-	-	-	-	55,239,935	55,239,935
499 Fixed Charges and Special Purpose Appropriations - Public Safety	-	-	-	-	-	288,024,665	288,024,665
Total Fixed Charges And Special Purpose Appropriations	\$0	\$0	\$0	\$0	\$0	\$343,264,600	\$343,264,600

*Juvenile Temporary Detention Center, department 440 is managed by the Court appointed Transitional Administrator, not the Chief Judge.

SUMMARY OF APPROPRIATIONS BY CONTROL OFFICER AND PROGRAM AREA

Departments	GENERAL GOVERNMENT, FINANCE AND ADMINISTRATION					PROPERTY AND TAXATION	ECONOMIC DEVELOPMENT	FIXED CHARGES AND OTHERS	TOTAL
	HEALTHCARE	PUBLIC SAFETY							
Total Fixed Charges	\$-	\$-	\$-	\$-	\$-	\$-	\$-	\$343,264,600	\$343,264,600
Total General Fund	\$82,366,115	\$-	\$48,125,194	\$914,996,468	\$6,856,869	\$-	\$-	\$343,264,600	\$1,375,609,246
Enterprise Fund									
Cook County Health & Hospital Systems Board									
Cook County Health & Hospital System									
240 Cermak Health Services of Cook County	\$46,630,843	\$-	\$-	\$-	\$-	\$-	\$-	\$-	\$46,630,843
241 Health Services - JTDC	3,910,387	-	-	-	-	-	-	-	3,910,387
880 Health System Administration	189,471,395	-	-	-	-	-	-	-	189,471,395
881 Provident Hospital of Cook County	48,357,796	-	-	-	-	-	-	-	48,357,796
883 Ambulatory and Community Health Network of Cook County	51,465,467	-	-	-	-	-	-	-	51,465,467
894 Ruth M. Rofstein CORE Center	11,753,051	-	-	-	-	-	-	-	11,753,051
895 Department of Public Health	14,450,251	-	-	-	-	-	-	-	14,450,251
896 Managed Care	190,804,289	-	-	-	-	-	-	-	190,804,289
897 John H. Stroger, Jr. Hospital of Cook County	445,202,520	-	-	-	-	-	-	-	445,202,520
888 Oak Forest Health Center of Cook County	11,216,096	-	-	-	-	-	-	-	11,216,096
899 Fixed Charges and Special Purpose Appropriations - Health	112,455,101	-	-	-	-	-	-	-	112,455,101
Total Cook County Health & Hospital System	\$1,125,717,196	\$0	\$0	\$0	\$0	\$0	\$0	\$0	\$1,125,717,196
Total Cook County Health & Hospital Systems Board	\$1,125,717,196	\$-	\$-	\$-	\$-	\$-	\$-	\$-	\$1,125,717,196
Total Enterprise Fund	\$1,125,717,196	\$-	\$-	\$-	\$-	\$-	\$-	\$-	\$1,125,717,196
Special Purpose and Election Funds									
Offices Under the President									
Chief Administrative Officer									
501 MFT Illinois First (1st)	22,748,938	-	-	-	-	-	-	-	22,748,938
510 Animal Control Department	3,452,832	-	-	-	-	-	-	-	3,452,832
530 Cook County Law Library	6,003,918	-	-	-	-	-	-	-	6,003,918
Total Chief Administrative Officer	\$32,205,688	\$0	\$0	\$0	\$0	\$0	\$0	\$0	\$32,205,688
Chief Information Officer									
545 Geographic Information Systems	15,461,850	-	-	-	-	-	-	-	15,461,850
Total Chief Information Officer	\$15,461,850	\$0	\$0	\$0	\$0	\$0	\$0	\$0	\$15,461,850
Other Funds									
580 Annuity and Benefits	-	-	-	-	-	-	-	194,666,229	194,666,229
853 Bond and Interest	-	-	-	-	-	-	-	187,384,752	187,384,752
Total Other Funds	\$0	\$0	\$0	\$0	\$0	\$0	\$0	\$382,052,981	\$382,052,981
Public Defender									

*Juvenile Temporary Detention Center, department 440 is managed by the Court appointed Transitional Administrator, not the Chief Judge.

SUMMARY OF APPROPRIATIONS BY CONTROL OFFICER AND PROGRAM AREA

Departments	GENERAL GOVERNMENT, FINANCE AND ADMINISTRATION					PROPERTY AND TAXATION	ECONOMIC DEVELOPMENT	FIXED CHARGES AND OTHERS		TOTAL
	ADMINISTRATION	HEALTHCARE	PUBLIC SAFETY	TAXATION	DEVELOPMENT			OTHERS	TOTAL	
584 PD Records Automation Fund	\$-	\$-	\$158,000	\$-	\$-	\$158,000	\$-	\$-	\$-	\$158,000
Total Public Defender	\$0	\$0	\$158,000	\$0	\$0	\$158,000	\$0	\$0	\$0	\$158,000
Cook County Land Bank Authority										
586 Cook County Land Bank Authority	-	-	-	-	-	-	1,000,000	-	-	1,000,000
Total Cook County Land Bank Authority	\$0	\$0	\$0	\$0	\$0	\$0	\$1,000,000	\$0	\$0	\$1,000,000
Total Offices Under the President	\$47,667,538	\$-	\$158,000	\$-	\$-	\$-	\$1,000,000	382,052,981	\$-	\$430,878,519
Cook County Health & Hospital Systems Board										
Cook County Health & Hospital System										
544 Lead Poisoning Prevention Fund	-	1,227,008	-	-	-	-	-	-	-	1,227,008
564 TB Sanitarium District	-	6,546,902	-	-	-	-	-	-	-	6,546,902
Total Cook County Health & Hospital System	\$0	\$7,773,910	\$0	\$0	\$0	\$0	\$0	\$0	\$0	\$7,773,910
Total Cook County Health & Hospital Systems Board	\$-	\$7,773,910	\$-	\$-	\$-	\$-	\$-	\$-	\$-	\$7,773,910
Elected and Appointed Officials										
Assessor										
579 Assessor Special Revenue Fund	-	-	-	-	-	750,000	-	-	-	750,000
Total Assessor	\$0	\$0	\$0	\$0	\$0	\$750,000	\$0	\$0	\$0	\$750,000
Board of Election Commissioners										
525 Board of Election Commissioners - Election Fund	16,189,445	-	-	-	-	-	-	-	-	16,189,445
Total Board of Election Commissioners	\$16,189,445	\$0	\$0	\$0	\$0	\$0	\$0	\$0	\$0	\$16,189,445
Chief Judge										
531 Circuit Court - Illinois Dispute Resolution Fund	-	-	225,000	-	-	-	-	-	-	225,000
532 Adult Probation/Probation Service Fee Fund	-	-	4,324,052	-	-	-	-	-	-	4,324,052
538 Juvenile Probation - Supplementary Officers	-	-	3,240,516	-	-	-	-	-	-	3,240,516
541 Social Service/Probation and Court Services Fund	-	-	2,944,994	-	-	-	-	-	-	2,944,994
572 Children's Waiting Room Revenue Fund	-	-	3,085,407	-	-	-	-	-	-	3,085,407
574 Mental Health Special Revenue Fund	-	-	1,035,000	-	-	-	-	-	-	1,035,000
575 Peer Court Special Revenue Fund	-	-	1,095,000	-	-	-	-	-	-	1,095,000
576 Drug Court Special Revenue Fund	-	-	510,000	-	-	-	-	-	-	510,000
Total Chief Judge	\$0	\$0	\$16,459,969	\$0	\$0	\$0	\$0	\$0	\$0	\$16,459,969
Clerk of the Circuit Court										
528 Clerk of the Circuit Court Automation Fund	-	-	10,617,929	-	-	-	-	-	-	10,617,929
529 Clerk of the Circuit Court Document Storage Fund	-	-	9,842,419	-	-	-	-	-	-	9,842,419
567 Clerk of the Circuit Court Administrative Fund	-	-	730,369	-	-	-	-	-	-	730,369

*Juvenile Temporary Detention Center, department 440 is managed by the Court appointed Transitional Administrator, not the Chief Judge.

SUMMARY OF APPROPRIATIONS BY CONTROL OFFICER AND PROGRAM AREA

Departments	GENERAL GOVERNMENT, FINANCE AND ADMINISTRATION				PROPERTY AND TAXATION	ECONOMIC DEVELOPMENT	FIXED CHARGES AND OTHERS		TOTAL
	\$-	\$-	\$-	\$-			\$-	\$-	
580 Clerk of the Circuit Court Electronic Citation Fund	\$0	\$0	\$450,000	\$-	\$0	\$-	\$-	\$-	\$450,000
County Clerk									
Total Clerk of the Circuit Court	\$0	\$0	\$21,640,717	\$0	\$0	\$0	\$0	\$0	\$21,640,717
524 County Clerk - Elections Division Fund	-	-	-	24,038,039	-	-	-	-	24,038,039
533 County Clerk - Automation Fund	-	-	-	1,573,300	-	-	-	-	1,573,300
Total County Clerk	\$0	\$0	\$0	\$25,611,339	\$0	\$0	\$0	\$0	\$25,611,339
Recorder of Deeds									
527 County Recorder Document Storage System Fund	-	-	-	4,771,195	-	-	-	-	4,771,195
570 GIS Fee Fund	-	-	-	3,599,488	-	-	-	-	3,599,488
571 Rental Housing Support Fee Fund	-	-	-	576,867	-	-	-	-	576,867
Total Recorder of Deeds	\$0	\$0	\$0	\$8,947,550	\$0	\$0	\$0	\$0	\$8,947,550
Sheriff									
535 Intergovernmental Agreement/ETSB	-	-	1,141,335	-	-	-	-	-	1,141,335
546 Sheriff's Youthful Offender Alcohol & Drug Education	-	-	2,400	-	-	-	-	-	2,400
573 Women's Justice Services Fund	-	-	65,000	-	-	-	-	-	65,000
Total Sheriff	\$0	\$0	\$1,208,735	\$0	\$0	\$0	\$0	\$0	\$1,208,735
State's Attorney									
561 State's Attorney Narcotics Forfeiture	-	-	4,227,001	-	-	-	-	-	4,227,001
562 State's Attorney Bad Check Diversion Program	-	-	67,000	-	-	-	-	-	67,000
583 State's Attorney Records Automation Fund	-	-	158,000	-	-	-	-	-	158,000
Total State's Attorney	\$0	\$0	\$4,452,001	\$0	\$0	\$0	\$0	\$0	\$4,452,001
Treasurer									
534 County Treasurer - Tax Sales Automation Fund	-	-	-	9,605,533	-	-	-	-	9,605,533
Total Treasurer	\$0	\$0	\$0	\$9,605,533	\$0	\$0	\$0	\$0	\$9,605,533
Total Elected and Appointed Officials	\$16,189,445	\$-	\$43,761,422	\$44,914,422	\$-	\$-	\$-	\$-	\$104,865,289
Total Special Purpose and Election Funds	\$63,856,983	\$7,775,910	\$43,919,422	\$44,914,422	\$1,000,000	\$82,052,981	\$-	\$-	\$543,517,718
Restricted Funds (Grants)	4,359,902	10,113,231	121,522,197	3,784,602	22,165,884	-	-	-	161,945,816
Total Operating Funds	\$130,583,000	\$1,143,604,337	\$1,090,438,087	\$96,824,218	\$30,022,753	\$725,317,581	\$-	\$-	\$3,044,844,160
Capital Improvements	-	-	-	-	-	-	-	-	329,438,894
Grand Total	\$130,583,000	\$1,143,604,337	\$1,090,438,087	\$96,824,218	\$30,022,753	\$725,317,581	\$-	\$-	\$3,536,228,870

*Juvenile Temporary Detention Center, department 440 is managed by the Court appointed Transitional Administrator, not the Chief Judge.

SUMMARY OF APPROPRIATIONS BY OBJECT CLASSIFICATION AND FUNDS

Departments	PERSONAL SERVICES	CONTRACTUAL SERVICES	SUPPLIES AND MATERIALS	OPERATIONS AND MAINTENANCE	RENTAL AND LEASING	CAPITAL OUTLAY	CONTINGENCY AND SPEC. PURPOSE	SUBTOTAL	ALLOCATED CAPITAL	TOTAL
General Fund										
Offices Under the President										
President										
010 Office of the President	\$1,713,590	\$18,648	\$3,856	\$2,080	\$9,989	\$-	\$(178,164)	\$1,569,999		\$1,569,999
205 Justice Advisory Council	418,866	1,291	750	1,207	844	-	-	422,948		422,948
265 Department of Homeland Security and Emergency Management - General Fund	1,913,722	52,667	24,180	95,936	3,000	-	(730,154)	1,359,351		1,359,351
Total President	\$4,046,168	\$72,606	\$28,786	\$99,223	\$13,833	\$-	\$908,318	\$3,352,288		\$3,352,288
Chief Administrative Officer										
011 Office of the Chief Administrative Officer	2,622,405	113,086	11,350	3,500	201,245	-	(239,000)	2,712,586		2,712,586
161 Department of Environmental Control	1,710,763	145,204	31,692	67,780	10,976	-	(328,690)	1,637,725		1,637,725
259 Medical Examiner	8,295,194	1,426,232	426,500	258,308	22,028	-	-	10,428,262		10,428,262
451 Office of Adoption and Child Custody Advocacy	664,066	6,650	2,730	8,000	656	-	-	682,102		682,102
500 Department of Transportation and Highways	4,307,587	107,985	129,193	1,474,510	39,194	-	(250,000)	5,808,469		5,808,469
Total Chief Administrative Officer	\$17,600,015	\$1,799,157	\$601,465	\$1,812,098	\$274,099	\$-	\$(617,690)	\$21,269,144		\$21,269,144
Chief Financial Officer										
007 Revenue	3,498,367	948,325	89,500	141,000	12,283	-	(2,571,332)	2,118,143		2,118,143
008 Risk Management	1,654,937	11,591	15,800	5,168	4,552	-	(990,515)	701,533		701,533
014 Budget and Management Services	1,601,568	6,720	4,200	-	8,478	-	(154,250)	1,466,716		1,466,716
020 County Comptroller	2,917,156	12,300	44,500	15,952	7,560	-	-	2,997,468		2,997,468
021 Office of the Chief Financial Officer	1,110,983	1,886	9,400	-	350	-	(10,000)	1,112,619		1,112,619
022 Contract Compliance	784,748	6,988	4,150	40,300	6,538	-	(72,000)	770,724		770,724
029 Enterprise Resource Planning (ERP)	1,951,822	6,400	15,800	-	6,840	-	(1,980,862)	-		-
030 Office of the Chief Procurement Officer	2,582,895	42,698	32,400	87,000	9,231	-	-	2,754,224		2,754,224
Total Chief Financial Officer	\$16,102,476	\$1,036,908	\$215,750	\$289,420	\$55,832	\$-	\$(6,778,959)	\$11,921,427		\$11,921,427
Chief of Human Resources										
019 Employee Appeals Board	60,000	5,251	-	-	-	-	-	65,251		65,251
032 Department of Human Resources	3,602,697	136,437	51,041	331,549	10,470	-	(231,134)	3,901,060		3,901,060
Total Chief of Human Resources	\$3,662,697	\$141,688	\$51,041	\$331,549	\$10,470	\$-	\$(231,134)	\$3,966,311		\$3,966,311

*Juvenile Temporary Detention Center, department 440 is managed by the Court appointed Transitional Administrator, not the Chief Judge.

SUMMARY OF APPROPRIATIONS BY OBJECT CLASSIFICATION AND FUNDS

Departments	PERSONAL SERVICES	CONTRACTUAL SERVICES	SUPPLIES AND MATERIALS	OPERATIONS AND MAINTENANCE	RENTAL AND LEASING	CAPITAL OUTLAY	CONTINGENCY AND SPEC. PURPOSE	SUBTOTAL	ALLOCATED CAPITAL	TOTAL
Chief Information Officer										
009 Technology Policy & Planning	\$5,332,462	\$161,334	\$25,100	\$371,600	\$8,310	\$-	\$(1,639,052)	\$4,259,744		\$4,259,744
016 IT Solutions & Services	5,840,418	448,900	120,832	494,650	14,871	-	(270,109)	6,649,562		6,649,562
Total Chief Information Officer	\$11,172,870	\$610,234	\$145,932	\$866,250	\$23,181	\$-	\$(1,909,161)	\$10,909,306		\$10,909,306
Chief of Economic Development										
013 Planning and Development	1,158,036	258,417	3,350	500	844	-	(365,721)	1,055,426		1,055,426
027 Office of Economic Development	693,921	87,491	6,050	-	-	-	-	787,462		787,462
031 Capital Planning and Policy	1,420,372	12,387	10,500	63,000	3,352	-	(80,043)	1,429,568		1,429,568
160 Building and Zoning	3,141,801	33,471	15,500	8,321	5,378	-	(20,244)	3,184,227		3,184,227
170 Zoning Board of Appeals	404,648	17,500	3,015	655	3,191	-	(28,823)	400,186		400,186
Total Chief of Economic Development	\$6,818,778	\$409,266	\$38,415	\$72,476	\$12,765	\$-	\$(494,831)	\$6,856,869		\$6,856,869
Facilities										
200 Department of Facilities Management	37,489,664	595,501	3,220,663	3,521,072	30,774	-	(9,659,500)	35,198,174		35,198,174
Total Facilities	\$37,489,664	\$595,501	\$3,220,663	\$3,521,072	\$30,774	\$-	\$(9,659,500)	\$35,198,174		\$35,198,174
County Auditor										
070 County Auditor	883,972	270	1,011	1,300	540	-	-	887,093		887,093
Total County Auditor	\$883,972	\$270	\$1,011	\$1,300	\$540	\$-	\$-	\$887,093		\$887,093
Public Defender										
260 Public Defender	56,084,942	2,035,519	341,997	61,300	109,692	-	(3,358,000)	55,275,450		55,275,450
Total Public Defender	\$56,084,942	\$2,035,519	\$341,997	\$61,300	\$109,692	\$-	\$(3,358,000)	\$55,275,450		\$55,275,450
Administrative Hearings										
026 Department of Administrative Hearings	443,721	770,250	11,308	-	7,077	-	-	1,232,356		1,232,356
Total Administrative Hearings	\$443,721	\$770,250	\$11,308	\$-	\$7,077	\$-	\$-	\$1,232,356		\$1,232,356
Department of Human Rights and Ethics										
002 Department of Human Rights and Ethics	752,261	13,900	2,600	1,000	5,296	-	1,545	776,602		776,602
Total Department of Human Rights and Ethics	\$752,261	\$13,900	\$2,600	\$1,000	\$5,296	\$-	\$1,545	\$776,602		\$776,602
Total Offices Under the President	\$155,057,564	\$7,485,299	\$4,658,968	\$7,055,688	\$543,559	\$-	\$(23,156,048)	\$151,645,030		\$151,645,030
Elected and Appointed Officials										

*Juvenile Temporary Detention Center, department 440 is managed by the Court appointed Transitional Administrator, not the Chief Judge.

SUMMARY OF APPROPRIATIONS BY OBJECT CLASSIFICATION AND FUNDS

Departments	PERSONAL SERVICES	CONTRACTUAL SERVICES	SUPPLIES AND MATERIALS	OPERATIONS AND MAINTENANCE	RENTAL AND LEASING	CAPITAL OUTLAY	CONTINGENCY AND SPEC. PURPOSE	SUBTOTAL	ALLOCATED CAPITAL	TOTAL
Cook County Board of Commissioners										
018 Office Of The Secretary To The Board of Commissioners	\$850,813	\$48,436	\$159,157	\$-	\$15,650	\$-	\$23,900	\$1,097,956		\$1,097,956
081 First District -Office of the County Commissioner	329,955	8,371	-	3,600	16,800	-	-	368,726		368,726
082 Second District -Office of the County Commissioner	283,828	32,447	16,320	3,250	18,060	-	5,000	368,905		368,905
083 Third District -Office of the County Commissioner	305,581	53,239	-	-	-	-	-	368,820		368,820
084 Fourth District -Office of the County Commissioner	317,275	13,800	-	3,700	24,000	-	-	368,775		368,775
085 Fifth District -Office of the County Commissioner	317,545	-	5,093	3,600	15,520	-	16,800	368,558		368,558
086 Sixth District -Office of the County Commissioner	327,863	-	-	4,320	12,000	-	14,400	368,583		368,583
087 Seventh District -Office of the County Commissioner	307,052	20,000	13,400	3,000	15,600	-	-	369,052		369,052
088 Eighth District -Office of the County Commissioner	298,847	28,300	-	5,000	20,700	-	6,000	368,847		368,847
089 Ninth District -Office of the County Commissioner	346,683	-	-	-	12,000	-	-	368,683		368,683
090 Tenth District -Office of the County Commissioner	337,903	15,000	2,000	-	4,000	-	-	368,903		368,903
091 Eleventh District -Office of the County Commissioner	474,977	-	24,620	-	-	-	-	499,597		499,597
092 Twelfth District -Office of the County Commissioner	321,957	5,900	-	6,000	24,900	-	-	368,757		368,757
093 Thirteenth District -Office of the County Commissioner	308,692	27,120	2,000	3,908	16,972	-	-	368,692		368,692
094 Fourteenth District -Office of the County Commissioner	340,368	9,364	-	-	9,000	-	-	368,732		368,732
095 Fifteenth District -Office of the County Commissioner	314,574	31,950	-	300	1,200	-	10,800	368,824		368,824
096 Sixteenth District -Office of the County Commissioner	321,335	19,150	-	3,055	15,295	-	-	368,835		368,835
097 Seventeenth District -Office of the County Commissioner	299,372	30,364	-	1,500	10,810	-	16,800	368,846		368,846
Assessor	\$6,404,620	\$343,441	\$222,590	\$41,233	\$232,507	\$-	\$93,700	\$7,338,091		\$7,338,091
040 County Assessor	21,688,033	4,763,500	520,000	157,000	136,771	-	(2,640,505)	24,624,799		24,624,799
Board of Review	\$21,688,033	\$4,763,500	\$520,000	\$157,000	\$136,771	\$-	\$(2,640,505)	\$24,624,799		\$24,624,799
050 Board of Review	7,856,577	196,492	158,000	4,000	18,072	-	-	8,233,141		8,233,141
Chief Judge	\$7,856,577	\$196,492	\$158,000	\$4,000	\$18,072	\$-	\$-	\$8,233,141		\$8,233,141

*Juvenile Temporary Detention Center, department 440 is managed by the Court appointed Transitional Administrator, not the Chief Judge.

SUMMARY OF APPROPRIATIONS BY OBJECT CLASSIFICATION AND FUNDS

Departments	PERSONAL SERVICES	CONTRACTUAL SERVICES	SUPPLIES AND MATERIALS	OPERATIONS AND MAINTENANCE	RENTAL AND LEASING	CAPITAL OUTLAY	CONTINGENCY AND SPEC. PURPOSE	SUBTOTAL	ALLOCATED CAPITAL	TOTAL
280 Adult Probation Department	\$38,982,951	\$25,373	\$96,250	\$231,850	\$1,297,743	\$-	\$(3,280,300)	\$37,353,867		\$37,353,867
300 Judiciary	292,188	751,675	356,653	5,001,230	5,200	-	4,285,000	10,691,946		10,691,946
305 Public Guardian	17,134,163	258,971	111,156	118,700	95,085	-	(250,000)	17,468,075		17,468,075
310 Office of the Chief Judge	27,830,250	8,559,085	324,050	17,400	220,734	-	(6,435,000)	30,516,519		30,516,519
312 Forensic Clinical Services	2,399,961	700	10,600	-	2,504	-	-	2,413,765		2,413,765
313 Social Service	12,990,725	3,529	6,750	-	19,661	-	(2,515,065)	10,505,600		10,505,600
326 Juvenile Probation and Court Services	25,362,483	8,411,605	113,000	386,976	40,955	-	(2,655,000)	31,660,029		31,660,029
440 Juvenile Temporary Detention Center*	41,545,161	6,988,896	2,865,000	181,000	29,653	-	(767,625)	50,842,085		50,842,085
Total Chief Judge	\$166,537,892	\$24,999,834	\$3,883,459	\$5,937,156	\$1,711,535	\$-	\$(11,617,990)	\$191,451,866		\$191,451,866
Clerk of the Circuit Court										
335 Clerk of the Circuit Court - Office of the Clerk	71,415,639	2,106,018	471,360	1,976,348	828,699	-	(1,868,958)	74,929,106		74,929,106
Total Clerk of the Circuit Court	\$71,415,639	\$2,106,018	\$471,360	\$1,976,348	\$828,699	\$-	\$(1,868,958)	\$74,929,106		\$74,929,106
County Clerk										
110 County Clerk	7,463,215	256,235	118,500	55,250	5,000	-	(269,880)	7,628,320		7,628,320
Total County Clerk	\$7,463,215	\$256,235	\$118,500	\$55,250	\$5,000	\$-	\$(269,880)	\$7,628,320		\$7,628,320
Recorder of Deeds										
130 Recorder of Deeds	5,786,893	425,600	55,884	70,000	43,359	-	(695,616)	5,686,120		5,686,120
Total Recorder of Deeds	\$5,786,893	\$425,600	\$55,884	\$70,000	\$43,359	\$-	\$(695,616)	\$5,686,120		\$5,686,120
Sheriff										
210 Office of the Sheriff	3,846,847	247,067	702,005	-	103,903	-	-	4,899,822		4,899,822
214 Sheriff's Administration and Human Resources	13,395,155	255,000	-	-	-	-	-	13,650,155		13,650,155
217 Sheriff's Information Technology	3,943,070	-	-	1,212,000	-	-	(870,613)	4,284,457		4,284,457
230 Court Services Division	86,022,129	426,319	173,676	62,290	76,610	-	(830,000)	86,931,024		86,931,024
231 Police Department	47,657,345	278,518	152,616	670,782	25,637	-	(755,707)	48,029,191		48,029,191
239 Department of Corrections	273,831,181	26,707,828	2,667,660	2,504,000	200,161	-	(2,045,000)	303,865,830		303,865,830
249 Sheriff's Merit Board	1,499,953	278,000	15,000	1,000	1,405	-	-	1,795,358		1,795,358
Total Sheriff	\$430,195,680	\$28,192,732	\$3,710,957	\$4,450,072	\$407,716	\$-	\$(4,501,320)	\$462,455,837		\$462,455,837
State's Attorney										

*Juvenile Temporary Detention Center, department 440 is managed by the Court appointed Transitional Administrator, not the Chief Judge.

SUMMARY OF APPROPRIATIONS BY OBJECT CLASSIFICATION AND FUNDS

Departments	PERSONAL SERVICES	CONTRACTUAL SERVICES	SUPPLIES AND MATERIALS	OPERATIONS AND MAINTENANCE	RENTAL AND LEASING	CAPITAL OUTLAY	CONTINGENCY AND SPEC. PURPOSE	SUBTOTAL	ALLOCATED CAPITAL	TOTAL
250 State's Attorney	\$90,339,484	\$3,169,481	\$922,575	\$1,096,924	\$297,248	\$-	\$(2,596,122)	\$93,229,590		\$93,229,590
Treasurer	\$90,339,484	\$3,169,481	\$922,575	\$1,096,924	\$297,248	\$-	\$(2,596,122)	\$93,229,590		\$93,229,590
060 County Treasurer	1,738,501	96,771	23,431	24,268	69,843	-	-	1,952,814		1,952,814
Inspector General	\$1,738,501	\$96,771	\$23,431	\$24,268	\$69,843	\$-	\$-	\$1,952,814		\$1,952,814
080 Office of the Independent Inspector General	1,724,822	73,430	17,680	7,200	19,706	-	(70,000)	1,772,838		1,772,838
Public Administrator	\$1,724,822	\$73,430	\$17,680	\$7,200	\$19,706	\$-	\$(70,000)	\$1,772,838		\$1,772,838
390 Public Administrator	932,857	86,110	15,012	23,297	39,798	-	-	1,097,074		1,097,074
Veterans Assistance Commission	\$932,857	\$86,110	\$15,012	\$23,297	\$39,798	\$-	\$-	\$1,097,074		\$1,097,074
452 Veterans' Assistance Commission	2,000	296,112	1,380	-	508	-	-	300,000		300,000
Total Veterans Assistance Commission	\$2,000	\$296,112	\$1,380	\$-	\$508	\$-	\$-	\$300,000		\$300,000
Total Elected and Appointed Officials	\$812,086,213	\$65,005,756	\$10,120,828	\$13,842,748	\$3,810,762	\$0	\$(24,166,691)	\$880,699,616		\$880,699,616
Fixed Charges										
Fixed Charges And Special Purpose Appropriations										
490 Fixed Charges and Special Purpose Appropriations - Corporate	19,693,262	16,599,144	-	15,486,170	34,000	-	3,467,359	55,239,935		55,239,935
499 Fixed Charges and Special Purpose Appropriations - Public Safety	198,646,756	17,405,992	520,800	35,717,511	1,000	-	35,732,606	288,024,665		288,024,665
Total Fixed Charges And Special Purpose Appropriations	\$218,340,018	\$33,965,136	\$520,800	\$51,203,681	\$35,000	\$-	\$39,199,965	\$343,264,600		\$343,264,600
Total Fixed Charges	\$218,340,018	\$33,965,136	\$520,800	\$51,203,681	\$35,000	\$0	\$39,199,965	\$343,264,600		\$343,264,600
Enterprise Fund										
Cook County Health & Hospital Systems Board										
Cook County Health & Hospital System										
240 Cermak Health Services of Cook County	42,731,642	1,910,000	1,081,250	796,500	66,751	-	44,700	46,630,843		46,630,843
241 Health Services - JTD	3,527,322	280,575	49,310	9,230	33,950	-	10,000	3,910,387		3,910,387
890 Health System Administration	50,170,316	35,375,476	50,452,150	45,602,239	7,623,250	-	247,964	189,471,395		189,471,395
Total General Fund	\$1,185,483,795	\$106,456,191	\$15,300,596	\$72,102,117	\$4,389,321	\$0	\$(6,122,774)	\$1,375,609,246		\$1,375,609,246

*Juvenile Temporary Detention Center, department 440 is managed by the Court appointed Transitional Administrator, not the Chief Judge.

SUMMARY OF APPROPRIATIONS BY OBJECT CLASSIFICATION AND FUNDS

Departments	PERSONAL SERVICES	CONTRACTUAL SERVICES	SUPPLIES AND MATERIALS	OPERATIONS AND MAINTENANCE	RENTAL AND LEASING	CAPITAL OUTLAY	CONTINGENCY AND SPEC. PURPOSE	SUBTOTAL	ALLOCATED CAPITAL	TOTAL
891 Provident Hospital of Cook County	\$33,346,550	\$8,346,722	\$3,360,373	\$3,052,592	\$150,059	\$-	\$101,500	\$48,357,796		\$48,357,796
893 Ambulatory and Community Health Network of Cook County	44,356,008	4,231,115	865,995	1,143,655	981,204	-	(112,500)	51,465,467		51,465,467
894 Ruth M. Rothstein CORE Center	5,702,939	133,833	5,658,659	237,000	20,620	-	-	11,753,051		11,753,051
895 Department of Public Health	12,021,761	1,027,285	322,426	492,010	536,769	-	50,000	14,450,251		14,450,251
896 Managed Care	13,520,627	145,777,760	31,336,902	56,000	113,000	-	-	190,804,289		190,804,289
897 John H. Stroger, Jr. Hospital of Cook County	323,089,171	52,713,745	49,663,460	19,297,911	692,786	-	(254,553)	445,202,520		445,202,520
898 Oak Forest Health Center of Cook County	6,518,965	241,398	956,347	3,461,411	37,975	-	-	11,216,096		11,216,096
899 Fixed Charges and Special Purpose Appropriations - Health	90,532,538	2,180,780	-	-	441,689	-	19,300,094	112,455,101		112,455,101
Total Cook County Health & Hospital System	\$625,517,839	\$252,218,689	\$143,746,862	\$74,148,548	\$10,698,053	\$-	\$19,387,205	\$1,125,717,196		\$1,125,717,196
Total Cook County Health & Hospital Systems Board	\$625,517,839	\$252,218,689	\$143,746,862	\$74,148,548	\$10,698,053	\$-	\$19,387,205	\$1,125,717,196		\$1,125,717,196
Total Enterprise Fund	\$625,517,839	\$252,218,689	\$143,746,862	\$74,148,548	\$10,698,053	\$-	\$19,387,205	\$1,125,717,196		\$1,125,717,196
Special Purpose and Election Funds										
Offices Under the President										
Chief Administrative Officer										
501 MFT Illinois First (1st)	21,507,607	288,300	367,000	669,031	112,000	-	(195,000)	22,748,938		22,748,938
510 Animal Control Department	1,589,795	1,040,216	139,000	79,892	3,465	119,339	481,125	3,452,832		3,452,832
530 Cook County Law Library	2,792,118	16,063	1,333,096	663,054	35,202	161,664	1,002,721	6,003,918		6,003,918
Total Chief Administrative Officer	\$25,889,520	\$1,344,579	\$1,839,096	\$1,411,977	\$150,667	\$281,003	\$1,288,846	\$32,205,668		\$32,205,668
Chief Information Officer										
545 Geographic Information Systems	1,973,739	8,641,500	326,700	583,207	-	992,000	2,944,704	15,461,850		15,461,850
Total Chief Information Officer	\$1,973,739	\$8,641,500	\$326,700	\$583,207	\$-	\$992,000	\$2,944,704	\$15,461,850		\$15,461,850
Other Funds										
590 Annuity and Benefits	-	-	-	-	-	-	194,668,229	194,668,229		194,668,229
853 Bond and Interest	-	-	-	-	-	-	187,384,752	187,384,752		187,384,752
Total Other Funds	\$-	\$-	\$-	\$-	\$-	\$-	\$382,052,981	\$382,052,981		\$382,052,981
Public Defender										
584 PD Records Automation Fund	-	-	-	-	-	-	158,000	158,000		158,000
Total Public Defender	\$-	\$-	\$-	\$-	\$-	\$-	\$158,000	\$158,000		\$158,000

*Juvenile Temporary Detention Center, department 440 is managed by the Court appointed Transitional Administrator, not the Chief Judge.

SUMMARY OF APPROPRIATIONS BY OBJECT CLASSIFICATION AND FUNDS

Departments	PERSONAL SERVICES	CONTRACTUAL SERVICES	SUPPLIES AND MATERIALS	OPERATIONS AND MAINTENANCE	RENTAL AND LEASING	CAPITAL OUTLAY	CONTINGENCY AND SPEC. PURPOSE	SUBTOTAL	ALLOCATED CAPITAL	TOTAL
Cook County Land Bank Authority										
586 Cook County Land Bank Authority	\$-	\$-	\$-	\$750,000	\$-	\$-	\$250,000	\$1,000,000		\$1,000,000
Total Cook County Land Bank Authority	\$-	\$-	\$-	\$750,000	\$-	\$-	\$250,000	\$1,000,000		\$1,000,000
Total Offices Under the President										
	\$27,863,259	\$9,986,079	\$2,165,796	\$2,745,184	\$150,667	\$1,273,003	\$386,684,531	\$430,878,519		\$430,878,519
Cook County Health & Hospital Systems Board										
Cook County Health & Hospital System										
544 Lead Poisoning Prevention Fund	322,462	875,705	6,235	-	1,000	-	21,606	1,227,008		1,227,008
564 TB Sanitarium District	3,923,835	689,000	196,600	607,835	2,216	56,418	1,060,998	6,546,902		6,546,902
Total Cook County Health & Hospital System	\$4,246,297	\$1,574,705	\$202,835	\$607,835	\$3,216	\$56,418	\$1,082,604	\$7,773,910		\$7,773,910
Total Cook County Health & Hospital Systems Board	\$4,246,297	\$1,574,705	\$202,835	\$607,835	\$3,216	\$56,418	\$1,082,604	\$7,773,910		\$7,773,910
Elected and Appointed Officials										
Assessor										
579 Assessor Special Revenue Fund	-	-	-	-	-	-	750,000	750,000		750,000
Total Assessor	\$-	\$-	\$-	\$-	\$-	\$-	\$750,000	\$750,000		\$750,000
Board of Election Commissioners										
525 Board of Election Commissioners - Election Fund	416,464	15,076,003	-	-	686,978	-	-	16,189,445		16,189,445
Total Board of Election Commissioners	\$416,464	\$15,076,003	\$-	\$-	\$686,978	\$-	\$-	\$16,189,445		\$16,189,445
Chief Judge										
531 Circuit Court - Illinois Dispute Resolution Fund	-	200,000	-	-	-	-	25,000	225,000		225,000
532 Adult Probation/Probation Service Fee Fund	95,000	2,360,480	125,850	-	-	-	1,742,722	4,324,052		4,324,052
538 Juvenile Probation - Supplementary Officers	3,240,516	-	-	-	-	-	-	3,240,516		3,240,516
541 Social Service/Probation and Court Services Fund	16,000	828,280	94,275	12,400	7,500	15,849	1,970,690	2,944,994		2,944,994
572 Children's Waiting Room Revenue Fund	1,511,829	3,750	40,000	-	3,000	13,277	1,513,551	3,085,407		3,085,407
574 Mental Health Special Revenue Fund	-	-	-	-	-	-	1,035,000	1,035,000		1,035,000
575 Peer Court Special Revenue Fund	-	-	-	-	-	-	1,095,000	1,095,000		1,095,000
576 Drug Court Special Revenue Fund	-	-	-	-	-	-	510,000	510,000		510,000
Total Chief Judge	\$4,863,345	\$3,392,510	\$260,125	\$12,400	\$10,500	\$29,126	\$7,891,963	\$16,459,969		\$16,459,969
Clerk of the Circuit Court										

*Juvenile Temporary Detention Center, department 440 is managed by the Court appointed Transitional Administrator, not the Chief Judge.

SUMMARY OF APPROPRIATIONS BY OBJECT CLASSIFICATION AND FUNDS

Departments	PERSONAL SERVICES	CONTRACTUAL SERVICES	SUPPLIES AND MATERIALS	OPERATIONS AND MAINTENANCE	RENTAL AND LEASING	CAPITAL OUTLAY	CONTINGENCY AND SPEC. PURPOSE	SUBTOTAL	ALLOCATED CAPITAL	TOTAL
528 Clerk of the Circuit Court Automation Fund	\$9,425,654	\$-	\$136,808	\$766,867	\$228,600	\$60,000	\$-	\$10,617,929		\$10,617,929
529 Clerk of the Circuit Court Document Storage Fund	7,453,644	948,300	117,091	491,100	654,861	177,423	-	9,842,419		9,842,419
567 Clerk of the Circuit Court Administrative Fund	729,369	-	1,000	-	-	-	-	730,369		730,369
580 Clerk of the Circuit Court Electronic Citation Fund	-	-	-	-	-	-	450,000	450,000		450,000
Total Clerk of the Circuit Court	\$17,608,667	\$948,300	\$254,899	\$1,257,967	\$883,461	\$237,423	\$450,000	\$21,640,717		\$21,640,717
County Clerk										
524 County Clerk - Elections Division Fund	11,573,083	9,670,267	795,228	1,694,890	582,756	-	(278,185)	24,038,039		24,038,039
533 County Clerk - Automation Fund	1,058,500	383,800	57,210	100,000	55,295	-	(81,505)	1,573,300		1,573,300
Total County Clerk	\$12,631,583	\$10,054,067	\$852,438	\$1,794,890	\$638,051	\$-	\$(359,690)	\$25,611,339		\$25,611,339
Recorder of Deeds										
527 County Recorder Document Storage System Fund	3,142,265	996,000	48,000	-	5,000	61,500	518,430	4,771,195		4,771,195
570 GIS Fee Fund	2,552,281	410,000	30,000	10,000	-	-	597,207	3,599,488		3,599,488
571 Rental Housing Support Fee Fund	-	-	-	-	-	-	576,867	576,867		576,867
Total Recorder of Deeds	\$5,694,546	\$1,406,000	\$78,000	\$10,000	\$5,000	\$61,500	\$1,692,504	\$6,947,550		\$6,947,550
Sheriff										
535 Intergovernmental Agreement/ETSB	1,270,864	-	-	-	-	-	(129,529)	1,141,335		1,141,335
546 Sheriff's Youthful Offender Alcohol & Drug Education	-	-	2,400	-	-	-	-	2,400		2,400
573 Women's Justice Services Fund	-	-	-	-	-	-	65,000	65,000		65,000
Total Sheriff	\$1,270,864	\$-	\$2,400	\$-	\$-	\$-	\$(64,529)	\$1,208,735		\$1,208,735
State's Attorney										
561 State's Attorney Narcotics Forfeiture	4,025,979	-	-	-	-	-	200,022	4,227,001		4,227,001
562 State's Attorney Bad Check Diversion Program	-	15,000	40,000	12,000	-	-	-	67,000		67,000
583 State's Attorney Records Automation Fund	-	-	-	-	-	-	158,000	158,000		158,000
Total State's Attorney	\$4,025,979	\$15,000	\$40,000	\$12,000	\$-	\$-	\$358,022	\$4,452,001		\$4,452,001
Treasurer										
534 County Treasurer - Tax Sales Automation Fund	7,060,435	1,318,500	175,500	488,538	6,843	299,650	256,067	9,605,533		9,605,533
Total Treasurer	\$7,060,435	\$1,318,500	\$175,500	\$488,538	\$6,843	\$299,650	\$256,067	\$9,605,533		\$9,605,533
Total Elected and Appointed Officials	\$53,572,863	\$32,210,380	\$1,663,362	\$3,575,795	\$2,240,833	\$627,689	\$10,974,337	\$104,865,269		\$104,865,269

*Juvenile Temporary Detention Center, department 440 is managed by the Court appointed Transitional Administrator, not the Chief Judge.

SUMMARY OF APPROPRIATIONS BY OBJECT CLASSIFICATION AND FUNDS

Departments	PERSONAL SERVICES	CONTRACTUAL SERVICES	SUPPLIES AND MATERIALS	OPERATIONS AND MAINTENANCE	RENTAL AND LEASING	CAPITAL OUTLAY	CONTINGENCY AND SPEC. PURPOSE	SUBTOTAL	ALLOCATED CAPITAL	TOTAL
Total Special Purpose and Election Funds	\$65,682,439	\$43,771,164	\$4,031,993	\$6,928,814	\$2,394,716	\$1,957,120	\$398,751,472	\$543,517,718		\$543,517,718
Restricted Fund (Grants)	\$46,527,547	\$18,562,471	\$1,379,925	\$9,872,752	\$3,333,080	\$13,246,525	\$69,023,516	\$161,945,816		\$161,945,816
Total Operating Funds	\$1,943,211,620	\$421,008,515	\$164,459,376	\$163,052,231	\$20,815,170	\$15,203,645	\$479,039,419	\$3,206,789,976		\$3,206,789,976
Capital Improvements										\$329,438,894
Grand Total	\$1,943,211,620	\$421,008,515	\$164,459,376	\$163,052,231	\$20,815,170	\$15,203,645	\$479,039,419	\$3,536,228,870		\$3,536,228,870

*Juvenile Temporary Detention Center, department 440 is managed by the Court appointed Transitional Administrator, not the Chief Judge.

SUMMARY OF APPROPRIATIONS BY CONTROL OFFICER FY2014

Control Officers	Corporate Fund	Public Safety Fund	Health Fund	Election Fund	Special Purpose Fund	Restricted Fund Grants	Total
Offices Under the President							
President	1,569,999	1,782,999	-	-	-	86,032,307	89,384,605
Chief Administrative Officer	10,158,780	11,110,364	-	-	32,205,688	2,016,661	55,491,493
Chief Financial Officer	11,921,427	-	-	-	-	-	11,921,427
Chief of Human Resources	3,966,311	-	-	-	-	-	3,966,311
Chief Information Officer	10,909,306	-	-	-	15,461,850	-	26,371,156
Chief of Economic Development	6,856,869	-	-	-	-	17,665,884	24,522,753
Facilities	-	35,198,174	-	-	-	-	35,198,174
Other Funds	-	-	-	-	382,052,981	-	382,052,981
County Auditor	887,093	-	-	-	-	-	887,093
Public Defender	-	55,275,450	-	-	158,000	175,782	55,609,232
Administrative Hearings	1,232,356	-	-	-	-	-	1,232,356
Department of Human Rights and Ethics	776,602	-	-	-	-	-	776,602
Cook County Land Bank Authority	-	-	-	-	1,000,000	4,500,000	5,500,000
Total Offices Under the President	\$48,278,743	\$103,366,287				111,479,233	\$694,002,782
Cook County Health & Hospital Systems Board							
Cook County Health & Hospital System	-	-	1,125,717,196	-	7,773,910	10,113,231	1,143,604,337
Total Cook County Health & Hospital Systems Board			\$1,125,717,196			10,113,231	\$1,143,604,337
Elected and Appointed Officials							
Cook County Board of Commissioners	7,338,091	-	-	-	-	-	7,338,091
Assessor	24,624,799	-	-	-	750,000	-	25,374,799
Board of Review	8,233,141	-	-	-	-	-	8,233,141
Board of Election Commissioners	-	-	-	16,189,445	-	-	16,189,445
Chief Judge	-	191,451,886	-	-	16,459,969	4,331,696	212,243,551
Clerk of the Circuit Court	-	74,929,106	-	-	21,640,717	4,124,080	100,693,903
County Clerk	7,628,320	-	-	-	1,573,300	3,784,602	37,024,261
Recorder of Deeds	5,686,120	-	-	24,038,039	8,947,550	-	14,633,670
Sheriff	-	462,455,837	-	-	1,208,735	-	471,415,817
State's Attorney	-	93,229,590	-	-	4,452,001	20,361,729	118,043,320
Treasurer	1,952,814	-	-	-	9,605,533	-	11,558,347
Inspector General	1,772,838	-	-	-	-	-	1,772,838
Public Administrator	-	1,097,074	-	-	-	-	1,097,074
Veterans Assistance Commission	300,000	-	-	-	-	-	300,000
Total Elected and Appointed Officials	\$57,536,123	\$823,163,493		\$40,227,484		40,355,352	\$1,025,916,257
Fixed Charges							
Fixed Charges And Special Purpose Appropriations	55,239,935	288,024,665	-	-	-	-	343,264,600
Total Fixed Charges	\$55,239,935	\$288,024,665			\$503,290,234		\$3,206,789,976
Total Operating Funds	\$161,054,801	\$1,214,554,445	\$1,125,717,196	\$40,227,484		161,945,816	

SUMMARY OF APPROPRIATIONS BY CONTROL OFFICER FY2014

Control Officers	Corporate Fund	Public Safety Fund	Health Fund	Election Fund	Special Purpose Fund	Restricted Fund Grants	Total
Capital Improvements							329,438,894
Grand Total	\$161,054,801	\$1,233,012,236	\$1,143,147,179	\$40,227,484	\$504,753,309	161,945,816	\$3,536,228,870

SUMMARY OF FULL TIME EQUIVALENT BY FUND

Department	2005	2006	2007	2008	2009	2010	2011	2012	2013	2014
General Fund										
Corporate Fund										
002 Department of Human Rights and Ethics	9.8	10.0	9.9	11.0	10.7	12.0	10.2	11.0	11.0	11.2
005 Department of Communication	8.5	8.0	7.0	-	-	-	-	-	-	0.0
007 Revenue	40.5	42.2	32.0	39.0	31.9	33.5	29.3	46.6	62.8	64.0
008 Risk Management	27.6	26.7	19.5	25.0	24.0	25.0	20.3	22.1	22.0	23.0
009 Technology Policy & Planning	3.0	2.8	3.0	13.0	8.6	9.0	50.0	64.0	66.4	61.0
010 Office of the President	15.5	18.0	16.0	35.0	25.8	34.0	20.2	16.0	16.0	17.0
011 Office of the Chief Administrative Officer	17.6	19.0	18.1	33.0	31.6	32.0	32.5	37.0	36.7	38.0
012 Department for Management of Information Systems	93.5	89.0	73.6	80.0	70.0	78.0	-	-	-	0.0
013 Planning and Development	12.4	12.0	9.0	13.0	11.0	10.0	10.8	13.0	10.0	13.0
014 Budget and Management Services	17.0	17.0	12.2	18.6	17.7	19.4	13.0	15.1	19.0	20.0
016 IT Solutions & Services	78.0	73.7	54.0	36.0	33.6	36.0	75.0	72.0	82.1	81.0
018 Office Of The Secretary To The Board of Commissioners	91.5	96.0	81.1	9.0	9.0	9.0	11.6	11.6	8.6	9.6
020 County Comptroller	49.2	50.0	46.0	58.0	49.1	49.8	38.4	38.6	37.7	41.7
021 Office of the Chief Financial Officer	3.8	5.0	3.9	6.0	3.2	8.0	7.4	8.2	23.9	11.0
022 Contract Compliance	14.3	13.7	11.0	13.0	12.4	12.2	12.0	10.2	10.0	11.0
023 Department of Office Technology	21.4	21.0	17.0	16.0	15.2	14.0	-	-	-	0.0
026 Department of Administrative Hearings	-	-	-	-	4.0	7.0	7.0	5.0	8.0	9.0
027 Office of Economic Development	-	-	-	-	-	-	-	8.4	7.0	7.0
028 IT Shared Services	-	-	-	-	-	-	-	52.0	-	0.0
029 Enterprise Resource Planning (ERP)	-	-	-	-	-	-	-	-	-	19.8
030 Office of the Chief Procurement Officer	50.6	50.0	34.0	40.0	32.6	34.9	24.3	19.9	34.0	37.0
031 Capital Planning and Policy	22.0	23.0	17.8	28.0	23.6	26.9	17.0	11.6	13.0	17.0
032 Department of Human Resources	48.2	51.0	46.0	50.0	44.6	42.1	39.8	38.0	44.4	47.0
040 County Assessor	453.0	433.8	390.0	417.0	396.3	397.0	337.4	368.9	347.0	360.0
050 Board of Review	129.3	130.0	122.0	126.0	123.0	132.0	124.9	127.0	126.0	125.0
060 County Treasurer	175.4	146.1	132.4	77.5	64.2	48.0	43.2	39.0	34.0	26.0
070 County Auditor	18.8	18.0	15.4	22.0	13.1	12.0	10.0	9.0	9.6	11.0
080 Office of the Independent Inspector General	5.0	5.0	5.0	18.0	18.4	15.0	17.9	20.6	20.0	20.0
081 First District -Office of the County Commissioner	-	-	-	5.0	4.1	5.0	5.0	5.0	5.0	5.0
082 Second District -Office of the County Commissioner	-	-	-	5.0	5.0	5.0	5.0	4.1	4.0	4.0
083 Third District -Office of the County Commissioner	-	-	-	5.0	5.0	3.1	3.7	3.7	3.7	4.0
084 Fourth District -Office of the County Commissioner	-	-	-	5.0	5.0	5.0	5.0	5.0	5.0	5.0
085 Fifth District -Office of the County Commissioner	-	-	-	5.0	5.0	5.0	4.2	4.0	4.0	4.0
086 Sixth District -Office of the County Commissioner	-	-	-	5.0	5.0	5.0	5.0	5.0	5.0	5.0
087 Seventh District -Office of the County Commissioner	-	-	-	5.0	5.0	5.0	4.0	4.5	4.5	4.5
088 Eighth District -Office of the County Commissioner	-	-	-	5.0	4.0	5.0	5.0	5.0	5.0	5.0

SUMMARY OF FULL TIME EQUIVALENT BY FUND

Department	2005	2006	2007	2008	2009	2010	2011	2012	2013	2014
089 Ninth District -Office of the County Commissioner	-	-	-	5.0	4.5	4.5	4.5	4.5	4.5	4.5
090 Tenth District -Office of the County Commissioner	-	-	-	5.0	5.0	5.0	4.0	4.0	5.0	5.0
091 Eleventh District -Office of the County Commissioner	-	-	-	8.0	6.8	5.7	5.7	5.7	5.7	5.7
092 Twelfth District -Office of the County Commissioner	-	-	-	5.0	4.2	4.2	4.0	5.0	5.0	4.0
093 Thirteenth District -Office of the County Commissioner	-	-	-	5.0	5.0	4.2	4.2	4.5	4.6	4.6
094 Fourteenth District -Office of the County Commissioner	-	-	-	5.0	4.0	4.0	4.0	4.0	4.0	4.0
095 Fifteenth District -Office of the County Commissioner	-	-	-	5.0	5.0	4.0	4.0	4.0	4.0	4.0
096 Sixteenth District -Office of the County Commissioner	-	-	-	5.0	4.2	4.0	4.4	4.0	4.0	4.0
097 Seventeenth District -Office of the County Commissioner	-	-	-	5.0	4.0	4.0	4.0	4.0	4.0	4.0
110 County Clerk	195.5	189.0	177.7	167.0	158.6	167.0	144.8	144.0	137.0	135.0
111 County Clerk - Election Division	63.8	61.0	-	-	-	-	-	-	-	0.0
120 Board of Election Commissioners	4.0	4.0	3.7	-	-	-	-	-	-	0.0
130 Recorder of Deeds	237.0	220.9	188.0	181.0	167.6	157.0	128.0	121.0	123.5	108.0
160 Building and Zoning	56.1	53.0	48.0	51.0	45.6	47.0	44.0	42.0	41.0	39.0
161 Department of Environmental Control	27.8	29.0	23.0	26.0	23.6	23.7	26.0	25.0	25.0	27.0
170 Zoning Board of Appeals	5.0	5.0	5.0	5.0	5.0	4.7	5.0	4.0	4.0	5.0
452 Veterans' Assistance Commission	4.0	4.0	3.0	4.0	2.8	3.0	3.0	3.0	-	0.0
500 Department of Transportation and Highways	347.8	321.1	272.0	263.0	226.1	204.4	103.2	90.0	74.8	68.4
Total Corporate Fund	2,346.9	2,248.0	1,896.3	1,969.1	1,763.7	1,781.3	1,481.9	1,569.8	1,531.5	1,539.0
Public Safety Fund										
200 Department of Facilities Management	396.9	383.5	381.0	407.0	372.5	380.0	384.0	378.0	407.1	549.0
205 Justice Advisory Council	7.0	6.0	5.0	6.0	6.0	6.0	6.0	6.0	5.0	5.0
210 Office of the Sheriff	27.2	31.0	24.0	26.0	31.0	26.0	22.0	23.0	33.0	50.6
211 Department of Fiscal Administration and Support Services	43.0	52.0	55.0	134.0	167.1	214.0	210.5	196.0	198.0	0.0
212 Sheriff's Women's Justice Programs	26.1	29.0	29.0	69.0	70.9	72.0	65.6	68.0	69.2	0.0
214 Sheriff's Administration and Human Resources	-	-	-	-	-	-	-	-	-	199.0
215 Custodian	302.7	342.0	262.0	295.0	285.9	275.0	243.5	-	-	0.0
217 Sheriff's Information Technology	-	-	-	-	-	-	-	-	-	53.0
230 Court Services Division	1,659.3	1,748.5	1,652.6	1,614.0	1,569.0	1,502.0	1,396.4	1,388.0	1,430.3	1,438.0
231 Police Department	642.0	645.0	604.0	601.0	597.5	589.0	576.7	543.0	531.8	609.0
235 Impact Incarceration	112.5	124.2	110.0	107.0	104.0	102.0	98.0	96.0	-	0.0
236 Reentry and Diversion Programs	508.7	528.4	478.0	471.0	376.1	376.0	350.2	201.0	304.1	0.0
238 Jail Diversion and Crime Prevention	33.5	31.0	23.1	31.0	32.4	32.0	29.0	-	-	0.0
239 Department of Corrections	3,116.4	3,294.5	3,606.6	3,687.0	3,528.2	3,670.2	3,666.0	3,834.1	3,936.9	4,374.3
249 Sheriff's Merit Board	17.0	17.0	16.0	16.0	16.0	25.0	24.5	27.0	30.0	31.0
250 State's Attorney	1,445.0	1,448.7	1,301.1	1,315.0	1,281.5	1,294.8	1,292.9	1,196.7	1,132.2	1,148.1
259 Medical Examiner	103.0	99.0	96.7	102.0	88.1	106.0	98.8	97.1	100.5	126.0
260 Public Defender	750.3	763.1	702.3	730.0	660.3	715.9	696.0	661.4	674.4	685.6

SUMMARY OF FULL TIME EQUIVALENT BY FUND

Department	2005	2006	2007	2008	2009	2010	2011	2012	2013	2014
265 Department of Homeland Security and Emergency Management - General Fund	-	-	-	-	-	-	-	14.0	15.0	17.0
270 Office of the Chief Coordinator	10.0	9.8	-	-	-	-	-	-	-	0.0
280 Adult Probation Department	751.9	713.0	675.1	691.0	697.9	687.8	648.0	603.0	577.0	574.5
300 Judiciary	450.0	450.0	450.0	450.0	430.4	443.0	440.0	439.0	439.0	437.0
305 Public Guardian	279.2	283.7	268.9	286.0	276.6	270.1	266.8	265.3	249.2	239.4
310 Office of the Chief Judge	596.5	595.7	495.3	513.0	511.1	520.7	487.9	482.8	465.0	465.0
312 Forensic Clinical Services	43.2	43.0	39.5	40.0	38.0	38.6	36.6	34.0	30.0	29.0
313 Social Service	250.1	244.2	225.1	230.0	222.8	222.4	210.6	208.0	199.0	196.3
326 Juvenile Probation and Court Services	503.1	480.0	431.6	455.0	428.8	445.8	391.6	373.6	368.0	392.8
335 Clerk of the Circuit Court - Office of the Clerk	1,885.3	1,917.3	1,761.7	1,836.0	1,779.2	1,734.2	1,719.9	1,549.8	1,511.7	1,505.7
390 Public Administrator	18.0	18.7	17.0	19.0	19.0	19.0	18.7	19.0	18.0	18.0
440 Juvenile Temporary Detention Center	493.9	461.5	407.6	568.0	612.0	633.0	634.0	634.0	595.0	663.2
451 Office of Adoption and Child Custody Advocacy	15.9	16.0	11.0	15.0	12.4	11.2	9.0	9.5	10.0	10.0
Total Public Safety Fund	14,487.7	14,775.8	14,129.2	14,714.0	14,234.7	14,411.7	14,023.2	13,287.3	13,329.4	13,816.5
Total General Fund	16,834.6	17,023.8	16,023.5	16,683.1	16,018.4	16,193.0	15,505.1	14,857.1	14,860.9	15,355.5
Enterprise Fund										
Health Fund										
240 Cermak Health Services of Cook County	464.4	468.2	423.2	392.0	445.2	486.5	516.0	527.0	502.1	579.1
241 Health Services - JTDC	-	-	-	40.0	39.0	39.0	36.8	37.0	36.0	37.0
890 Health System Administration	30.1	31.0	34.0	583.0	505.2	563.5	554.3	581.0	608.0	647.0
891 Provident Hospital of Cook County	749.2	728.1	650.3	693.0	690.0	663.6	462.9	468.0	383.0	357.5
893 Ambulatory and Community Health Network of Cook County	860.0	673.7	552.9	658.0	678.6	702.2	705.1	677.3	652.0	620.0
894 Ruth M. Rothstein CORE Center	61.0	59.0	54.0	61.0	61.4	67.7	67.4	70.0	66.0	69.6
895 Department of Public Health	172.0	166.4	160.6	167.0	160.6	171.6	170.8	176.0	155.0	148.0
896 Managed Care	-	-	-	-	-	-	-	-	247.0	266.3
897 John H. Stroger, Jr. Hospital of Cook County	4,122.1	4,279.3	3,911.5	3,768.0	3,866.4	3,898.3	3,614.9	4,184.0	3,903.0	3,905.6
898 Oak Forest Health Center of Cook County	1,567.1	1,521.8	1,181.4	1,010.0	1,055.0	1,024.3	509.9	337.5	116.0	115.0
Total Health Fund	8,025.9	7,927.5	6,967.9	7,372.0	7,501.4	7,626.7	6,638.1	7,057.8	6,668.1	6,745.1
Total Enterprise Fund	8,025.9	7,927.5	6,967.9	7,372.0	7,501.4	7,626.7	6,638.1	7,057.8	6,668.1	6,745.1
Special Purpose and Election Fund										
Election Fund										
524 County Clerk - Elections Division Fund	30.8	42.0	107.4	121.0	117.5	121.0	125.6	129.0	129.0	129.0
525 Board of Election Commissioners - Election Fund	-	-	-	4.0	4.0	4.0	4.0	4.0	4.0	4.0
Total Election Fund	30.8	42.0	107.4	125.0	121.5	125.0	129.6	133.0	133.0	133.0
Special Purpose Fund										
501 MFT Illinois First (1st)	122.0	106.5	108.0	166.0	124.0	145.2	231.6	214.0	209.1	217.5
510 Animal Control Department	21.0	21.0	21.0	24.0	24.0	24.0	21.0	24.0	24.0	23.0

SUMMARY OF FULL TIME EQUIVALENT BY FUND

Department	2005	2006	2007	2008	2009	2010	2011	2012	2013	2014
527 County Recorder Document Storage System Fund	29.5	31.7	39.0	52.0	54.0	59.0	28.0	32.0	33.0	44.0
528 Clerk of the Circuit Court Automation Fund	82.5	86.0	88.0	90.0	113.0	154.8	152.2	133.2	124.8	125.7
529 Clerk of the Circuit Court Document Storage Fund	100.0	97.0	117.0	104.0	125.0	133.0	132.0	117.0	118.0	120.0
530 Cook County Law Library	65.0	56.4	52.0	56.0	49.5	53.0	45.0	42.4	39.7	39.0
533 County Clerk - Automation Fund	16.0	19.0	15.0	13.0	12.2	13.0	15.0	13.0	14.0	14.0
534 County Treasurer - Tax Sales Automation Fund	9.0	10.0	10.0	58.0	66.7	72.0	71.0	70.0	71.2	66.0
535 Intergovernmental Agreement/ETS	14.0	14.0	14.0	14.0	16.0	16.0	16.0	49.5	49.5	14.7
538 Juvenile Probation - Supplementary Officers	69.0	68.7	69.0	71.0	71.0	47.6	70.0	69.8	57.0	52.0
544 Lead Poisoning Prevention Fund	4.0	4.0	3.0	5.0	4.0	4.0	3.5	3.0	3.0	3.0
545 Geographic Information Systems	3.0	10.0	8.0	18.0	12.5	16.0	12.0	15.0	19.0	18.0
560 State's Attorney Narcotics Nuisance Abatement	7.0	8.0	8.0	-	-	-	-	-	-	0.0
561 State's Attorney Narcotics Forfeiture	48.2	50.0	54.2	50.0	47.0	39.8	40.0	43.0	44.6	45.2
564 TB Sanitium District	-	-	-	49.0	49.0	50.0	44.5	45.0	38.0	39.0
565 Department of Homeland Security and Emergency Management	-	-	-	5.0	5.0	16.0	15.7	-	-	0.0
566 State's Attorney Capital Litigation Trust Fund	-	-	-	24.5	25.0	27.0	-	-	-	0.0
567 Clerk of the Circuit Court Administrative Fund	-	-	-	9.0	10.4	14.0	16.0	14.0	11.0	11.0
570 GIS Fee Fund	-	-	-	-	2.4	3.0	43.0	40.0	40.0	38.0
571 Rental Housing Support Fee Fund	-	-	-	-	1.7	2.0	7.0	-	-	0.0
572 Children's Waiting Room Revenue Fund	-	-	-	-	-	-	24.0	22.0	21.0	26.4
Total Special Purpose Fund	590.2	582.3	606.2	808.5	812.4	889.4	987.5	946.9	916.9	896.5
Total Special Purpose and Election Fund	621.0	624.3	713.6	933.5	933.9	1,014.4	1,117.1	1,079.9	1,049.9	1,029.5
Total Grants	1068.2	1037.6	1026.8	1034.0	809.2	779.0	724.6	664.6	590.0	543.0
Total Full Time Equivalent	26,549.7	26,613.2	24,733.8	26,022.6	25,262.9	25,613.1	23,984.9	23,659.4	23,168.9	23,673.1

SUMMARY OF FULL TIME EQUIVALENT BY CONTROL OFFICER

Department	2005	2006	2007	2008	2009	2010	2011	2012	2013	2014
General Fund										
Offices Under the President										
President	31.0	32.0	28.0	41.0	31.8	40.0	26.2	36.0	36.0	39.0
Chief Administrative Officer	522.1	493.9	420.8	439.0	381.8	377.3	269.5	258.6	247.0	269.4
Chief Financial Officer	203.0	204.6	158.6	199.6	170.9	182.8	144.7	160.7	209.4	227.5
Chief of Human Resources	48.2	51.0	46.0	50.0	44.6	42.1	39.8	38.0	44.4	47.0
Chief Information Officer	195.9	186.5	147.6	145.0	127.4	137.0	125.0	188.0	148.5	142.0
Chief of Economic Development	95.5	93.0	79.8	97.0	85.2	88.6	76.8	79.0	75.0	81.0
Facilities	396.9	383.5	381.0	407.0	372.5	380.0	384.0	378.0	407.1	549.0
County Auditor	18.8	18.0	15.4	22.0	13.1	12.0	10.0	9.0	9.6	11.0
Public Defender	750.3	763.1	702.3	730.0	660.3	715.9	686.0	661.4	674.4	685.6
Administrative Hearings	-	-	-	-	4.0	7.0	7.0	5.0	8.0	9.0
Department of Human Rights and Ethics	9.8	10.0	9.9	11.0	10.7	12.0	10.2	11.0	11.0	11.2
Total Offices Under the President	2,271.5	2,235.6	1,989.4	2,141.6	1,902.3	1,994.7	1,789.2	1,824.7	1,870.4	2,071.7
Elected and Appointed Officials										
Cook County Board of Commissioners	91.5	96.0	81.1	97.0	89.8	86.7	87.3	87.6	85.6	85.9
Assessor	453.0	433.8	390.0	417.0	396.3	397.0	337.4	368.9	347.0	360.0
Board of Review	129.3	130.0	122.0	126.0	123.0	132.0	124.9	127.0	126.0	125.0
Board of Election Commissioners	4.0	4.0	3.7	-	-	-	-	-	0.0	0.0
Chief Judge	3,367.9	3,271.1	2,993.1	3,233.0	3,217.6	3,261.4	3,115.5	3,039.7	2,922.2	2,997.2
Clerk of the Circuit Court	1,885.3	1,917.3	1,761.7	1,836.0	1,779.2	1,734.2	1,719.9	1,549.8	1,511.7	1,505.7
County Clerk	259.3	250.0	177.7	167.0	158.6	167.0	144.8	144.0	137.0	135.0
Recorder of Deeds	237.0	220.9	188.0	181.0	167.6	157.0	128.0	121.0	123.5	108.0
Sheriff	6,488.4	6,842.6	6,860.3	7,051.0	6,798.1	6,883.2	6,682.4	6,376.1	6,533.3	6,754.9
State's Attorney	1,445.0	1,448.7	1,301.1	1,315.0	1,281.5	1,294.8	1,292.9	1,136.7	1,132.2	1,148.1
Treasurer	175.4	146.1	132.4	77.5	64.2	48.0	43.2	39.0	34.0	26.0
Inspector General	5.0	5.0	5.0	18.0	18.4	15.0	17.9	20.6	20.0	20.0
Public Administrator	18.0	18.7	17.0	19.0	19.0	19.0	18.7	19.0	18.0	18.0
Veterans Assistance Commission	4.0	4.0	3.0	4.0	2.8	3.0	3.0	3.0	0.0	0.0
Total Elected and Appointed Officials	14,563.1	14,788.2	14,036.1	14,541.5	14,116.1	14,198.3	13,715.9	13,032.4	12,990.5	13,283.8
Enterprise Fund										
Cook County Health & Hospital Systems Board										
Cook County Health & Hospital System	16,834.6	17,023.8	16,025.5	16,683.1	16,018.4	16,193.0	15,505.1	14,857.1	14,860.9	15,355.5
Cook County Health & Hospital System	8,025.9	7,927.5	6,967.9	7,372.0	7,501.4	7,626.7	6,638.1	7,057.8	6,668.1	6,745.1

*Juvenile Temporary Detention Center is managed by the Court appointed Transitional Administrator, not the Chief Judge.

SUMMARY OF FULL TIME EQUIVALENT BY CONTROL OFFICER

Department	2005	2006	2007	2008	2009	2010	2011	2012	2013	2014
Total Cook County Health & Hospital Systems Board	8,025.9	7,927.5	6,967.9	7,372.0	7,501.4	7,626.7	6,638.1	7,057.8	6,668.1	6,745.1
Total Enterprise Fund	8,025.9	7,927.5	6,967.9	7,372.0	7,501.4	7,626.7	6,638.1	7,057.8	6,668.1	6,745.1
Special Purpose and Election Fund										
Offices Under the President										
President	-	-	-	5.0	5.0	16.0	15.7	-	0.0	0.0
Chief Administrative Officer	208.0	183.9	181.0	246.0	197.5	222.2	297.6	280.4	272.8	279.5
Chief Information Officer	3.0	10.0	8.0	18.0	12.5	16.0	12.0	15.0	19.0	18.0
Total Offices Under the President	211.0	193.9	189.0	269.0	215.0	254.2	325.3	295.4	291.8	297.5
Cook County Health & Hospital Systems Board										
Cook County Health & Hospital System	4.0	4.0	3.0	54.0	53.0	54.0	48.0	48.0	41.0	42.0
Total Cook County Health & Hospital Systems Board	4.0	4.0	3.0	54.0	53.0	54.0	48.0	48.0	41.0	42.0
Elected and Appointed Officials										
Board of Election Commissioners	-	-	-	4.0	4.0	4.0	4.0	4.0	4.0	4.0
Chief Judge	69.0	68.7	69.0	71.0	71.0	47.6	94.0	91.8	78.0	78.4
Clerk of the Circuit Court	182.5	183.0	205.0	203.0	248.4	301.8	300.2	264.2	253.8	256.7
County Clerk	46.8	61.0	122.4	134.0	129.7	134.0	140.6	142.0	143.0	143.0
Recorder of Deeds	29.5	31.7	39.0	52.0	58.1	64.0	78.0	72.0	73.0	82.0
Sheriff	14.0	14.0	14.0	14.0	16.0	16.0	16.0	49.5	49.5	14.7
State's Attorney	55.2	58.0	62.2	74.5	72.0	66.8	40.0	43.0	44.6	45.2
Treasurer	9.0	10.0	10.0	58.0	66.7	72.0	71.0	70.0	71.2	66.0
Total Elected and Appointed Officials	406.0	426.4	521.6	610.5	665.9	706.2	743.8	736.5	717.1	690.0
Total Special Purpose and Election Fund	621.0	624.3	713.6	933.5	933.9	1,014.4	1,117.1	1,079.9	1,049.9	1,029.5
Total Grants	1,068.2	1,037.6	1,026.8	1,034.0	809.2	779.0	724.6	664.6	590.0	543.0
Total Full Time Equivalent	26,550.0	26,613.2	24,733.8	26,022.6	25,262.9	25,613.1	23,984.9	23,659.4	23,168.9	23,673.1

* Juvenile Temporary Detention Center is managed by the Court appointed Transitional Administrator, not the Chief Judge.

SUMMARY OF SALARIES BY CONTROL OFFICER

Departments	2010	2011	2012	2013	2014
General Fund					
Offices Under the President					
President					
010 Office of the President	\$2,232,730	\$1,950,258	\$1,610,360	\$1,591,441	\$1,685,294
205 Justice Advisory Council	522,439	522,060	508,131	424,083	417,400
265 Department of Homeland Security and Emergency Management - General Fund	-	-	1,272,525	1,410,523	1,574,819
Total President	\$2,755,169	\$2,472,318	\$3,391,016	\$3,426,047	\$3,677,513
Chief Administrative Officer					
011 Office of the Chief Administrative Officer	2,199,281	2,266,314	2,568,900	2,486,069	2,615,035
161 Department of Environmental Control	1,558,168	1,585,579	1,504,157	1,523,664	1,701,823
259 Medical Examiner	7,033,430	6,460,099	6,194,756	6,662,961	8,168,592
451 Office of Adoption and Child Custody Advocacy	716,599	640,684	580,208	652,661	663,854
500 Department of Transportation and Highways	13,365,685	6,745,429	5,408,494	4,389,068	4,105,834
Total Chief Administrative Officer	\$24,873,163	\$17,698,105	\$16,256,515	\$15,714,423	\$17,245,138
Chief Financial Officer					
007 Revenue	2,137,125	1,889,068	2,609,241	3,110,535	3,469,332
008 Risk Management	1,612,794	1,419,651	1,499,897	1,510,396	1,650,930
014 Budget and Management Services	1,471,258	1,093,093	1,225,558	1,555,479	1,580,228
020 County Comptroller	3,159,279	2,581,145	2,626,711	2,674,849	2,918,941
021 Office of the Chief Financial Officer	810,592	772,932	792,361	2,091,438	1,083,231
022 Contract Compliance	786,311	757,962	683,730	670,280	780,367
029 Enterprise Resource Planning (ERP)	-	-	-	-	1,951,398
030 Office of the Chief Procurement Officer	2,159,633	1,677,156	1,490,069	2,183,575	2,537,265
Total Chief Financial Officer	\$12,136,992	\$10,191,007	\$10,927,567	\$13,796,552	\$15,971,692
Chief of Human Resources					
032 Department of Human Resources	3,330,756	2,557,298	3,013,871	3,617,099	3,609,950
Total Chief of Human Resources	\$3,330,756	\$2,557,298	\$3,013,871	\$3,617,099	\$3,609,950
Chief Information Officer					
009 Technology Policy & Planning	844,822	3,960,781	4,753,440	5,164,940	5,215,997
012 Department for Management of Information Systems	5,224,564	-	-	-	-
016 IT Solutions & Services	2,482,270	4,909,966	4,614,982	5,501,676	5,790,250
023 Department of Office Technology	992,996	-	-	-	-
028 IT Shared Services	-	-	3,136,083	-	-
Total Chief Information Officer	\$9,544,652	\$8,870,747	\$12,504,505	\$10,666,616	\$11,006,247
Chief of Economic Development					
013 Planning and Development	818,669	715,680	998,448	892,100	1,157,349
027 Office of Economic Development	-	-	797,708	662,338	677,199

* Juvenile Temporary Detention Center is managed by the Court appointed Transitional Administrator, not the Chief Judge.

SUMMARY OF SALARIES BY CONTROL OFFICER

Departments	2010	2011	2012	2013	2014
031 Capital Planning and Policy	\$2,018,697	\$1,428,941	\$893,887	\$1,078,009	\$1,412,166
160 Building and Zoning	3,393,973	3,297,969	3,083,576	3,027,614	3,047,964
170 Zoning Board of Appeals	325,408	338,190	278,481	282,582	339,870
Total Chief of Economic Development	\$6,556,747	\$5,780,780	\$6,048,100	\$5,942,643	\$6,634,548
Facilities					
200 Department of Facilities Management	29,136,112	30,298,603	27,926,149	29,925,868	35,830,979
Total Facilities	\$29,136,112	\$30,298,603	\$27,926,149	\$29,925,868	\$35,830,979
County Auditor					
070 County Auditor	899,250	775,049	734,863	896,750	877,817
Total County Auditor	\$899,250	\$775,049	\$734,863	\$896,750	\$877,817
Public Defender					
260 Public Defender	54,887,289	51,363,840	51,971,568	55,724,871	55,449,617
Total Public Defender	\$54,887,289	\$51,363,840	\$51,971,568	\$55,724,871	\$55,449,617
Administrative Hearings					
026 Department of Administrative Hearings	404,760	308,949	274,468	379,439	442,189
Total Administrative Hearings	\$404,760	\$308,949	\$274,468	\$379,439	\$442,189
Department of Human Rights and Ethics					
002 Department of Human Rights and Ethics	758,888	713,578	734,497	799,793	746,570
Total Department of Human Rights and Ethics	\$758,888	\$713,578	\$734,497	\$799,793	\$746,570
Elected and Appointed Officials					
Cook County Board of Commissioners					
018 Office Of The Secretary To The Board of Commissioners	712,705	826,039	801,617	726,134	836,162
081 First District -Office of the County Commissioner	359,229	328,229	331,229	331,229	331,229
082 Second District -Office of the County Commissioner	344,837	335,304	288,850	284,923	284,923
083 Third District -Office of the County Commissioner	263,755	296,349	296,349	296,349	306,761
084 Fourth District -Office of the County Commissioner	329,046	329,046	327,630	331,630	318,500
085 Fifth District -Office of the County Commissioner	375,050	318,987	318,987	318,987	318,987
086 Sixth District -Office of the County Commissioner	379,254	328,350	329,280	329,280	329,280
087 Seventh District -Office of the County Commissioner	406,741	304,000	307,000	307,000	307,000
088 Eighth District -Office of the County Commissioner	285,000	285,000	285,000	288,500	300,000
089 Ninth District -Office of the County Commissioner	336,166	340,000	342,500	348,000	348,000
090 Tenth District -Office of the County Commissioner	323,552	230,000	300,000	340,000	339,000
091 Eleventh District -Office of the County Commissioner	488,460	475,986	475,986	475,986	475,986
092 Twelfth District -Office of the County Commissioner	298,554	299,941	315,003	323,200	323,200
093 Thirteenth District -Office of the County Commissioner	323,000	312,000	312,000	312,000	310,000
094 Fourteenth District -Office of the County Commissioner	301,624	309,977	319,396	329,636	329,636
Total Offices Under the President	\$145,283,778	\$131,030,274	\$133,783,119	\$140,889,101	\$151,492,260

*Juvenile Temporary Detention Center is managed by the Court appointed Transitional Administrator, not the Chief Judge.

SUMMARY OF SALARIES BY CONTROL OFFICER

Departments	2010	2011	2012	2013	2014
095 Fifteenth District-Office of the County Commissioner	\$284,086	\$297,542	\$302,432	\$305,750	\$315,750
096 Sixteenth District-Office of the County Commissioner	283,120	329,067	299,000	303,000	303,000
097 Seventeenth District-Office of the County Commissioner	309,405	313,890	317,640	317,640	300,527
098 Finance Committee- Office of the County Commissioner	296,421	-	-	-	-
Total Cook County Board of Commissioners	\$6,700,005	\$6,259,707	\$6,269,899	\$6,269,244	\$6,377,941
Assessor					
040 County Assessor	23,581,641	19,965,519	20,173,487	20,537,914	21,383,344
Total Assessor	\$23,581,641	\$19,965,519	\$20,173,487	\$20,537,914	\$21,383,344
Board of Review					
050 Board of Review	7,714,563	6,695,877	7,189,198	7,697,926	7,792,748
Total Board of Review	\$7,714,563	\$6,695,877	\$7,189,198	\$7,697,926	\$7,792,748
Chief Judge					
280 Adult Probation Department	43,031,720	38,735,347	36,481,698	38,179,101	38,777,929
300 Judiciary	218,186	215,610	208,527	208,466	207,512
305 Public Guardian	17,361,913	16,356,797	16,463,975	17,189,308	16,875,614
310 Office of the Chief Judge	29,060,504	26,139,651	23,152,341	26,088,245	26,839,193
312 Forensic Clinical Services	2,999,543	2,757,833	2,390,573	2,463,571	2,391,499
313 Social Service	13,558,515	12,331,041	12,008,460	13,003,769	12,899,916
326 Juvenile Probation and Court Services	27,480,345	22,526,289	21,995,519	23,781,486	24,908,980
440 Juvenile Temporary Detention Center	28,662,068	28,242,999	28,088,480	26,764,806	33,565,661
Total Chief Judge	\$162,372,794	\$147,305,567	\$140,789,573	\$147,688,752	\$156,466,304
Clerk of the Circuit Court					
335 Clerk of the Circuit Court - Office of the Clerk	76,785,786	72,885,955	66,946,199	69,648,108	70,523,098
Total Clerk of the Circuit Court	\$76,785,786	\$72,885,955	\$66,946,199	\$69,648,108	\$70,523,098
County Clerk					
110 County Clerk	8,429,075	7,566,038	7,394,859	7,117,849	7,403,814
Total County Clerk	\$8,429,075	\$7,566,038	\$7,394,859	\$7,117,849	\$7,403,814
Recorder of Deeds					
130 Recorder of Deeds	7,290,830	5,752,120	5,760,320	6,263,332	5,753,416
Total Recorder of Deeds	\$7,290,830	\$5,752,120	\$5,760,320	\$6,263,332	\$5,753,416
Sheriff					
210 Office of the Sheriff	2,256,326	2,089,687	2,104,365	2,999,714	3,852,508
211 Department of Fiscal Administration and Support Services	12,380,699	12,083,226	11,702,890	12,349,765	-
212 Sheriff's Women's Justice Programs	4,209,258	3,641,240	3,769,451	4,060,431	-
214 Sheriff's Administration and Human Resources	-	-	-	-	12,847,928
215 Custodian	10,355,933	8,617,589	-	-	-
217 Sheriff's Information Technology	-	-	-	-	3,933,892

*Juvenile Temporary Detention Center is managed by the Court appointed Transitional Administrator, not the Chief Judge.

SUMMARY OF SALARIES BY CONTROL OFFICER

Departments	2010	2011	2012	2013	2014
230 Court Services Division	\$90,479,433	\$79,286,788	\$80,969,641	\$84,317,769	\$84,946,960
231 Police Department	42,156,229	40,456,284	40,513,728	40,579,856	44,616,660
235 Impact Incarceration	5,917,236	5,509,025	5,419,860	-	-
236 Reentry and Diversion Programs	23,776,360	20,905,592	11,708,860	18,648,147	-
238 Jail Division and Crime Prevention	1,756,056	1,499,674	-	-	-
239 Department of Corrections	205,765,591	192,701,679	202,047,868	226,719,866	252,103,867
249 Sheriff's Merit Board	1,030,224	1,008,511	1,175,272	1,412,167	1,501,850
Total Sheriff	\$400,085,345	\$367,799,295	\$359,411,645	\$391,087,715	\$403,803,665
State's Attorney					
250 State's Attorney	94,179,084	91,860,385	84,094,186	87,098,828	89,902,578
Total State's Attorney	\$94,179,084	\$91,860,385	\$84,094,186	\$87,098,828	\$89,902,578
Treasurer					
060 County Treasurer	3,031,700	2,756,256	2,405,220	2,035,347	1,737,562
Total Treasurer	\$3,031,700	\$2,756,256	\$2,405,220	\$2,035,347	\$1,737,562
Inspector General					
080 Office of the Independent Inspector General	1,115,015	1,481,023	1,667,572	1,707,746	1,716,161
Total Inspector General	\$1,115,015	\$1,481,023	\$1,667,572	\$1,707,746	\$1,716,161
Public Administrator					
390 Public Administrator	949,861	918,799	906,871	946,742	925,423
Total Public Administrator	\$949,861	\$918,799	\$906,871	\$946,742	\$925,423
Veterans Assistance Commission					
452 Veterans Assistance Commission	203,563	205,772	181,454	-	-
Total Veterans Assistance Commission	\$203,563	\$205,772	\$181,454	\$0	\$0
Total Elected and Appointed Officials	\$792,439,262	\$731,453,313	\$703,210,483	\$748,069,503	\$773,786,054
Total General Fund	\$937,723,040	\$862,483,587	\$836,993,602	\$888,958,604	\$925,278,314
Enterprise Fund					
Cook County Health & Hospital Systems Board					
Cook County Health & Hospital System					
240 Cermak Health Services of Cook County	28,470,899	33,553,103	35,006,129	32,953,547	37,416,502
241 Health Services - JTDC	2,787,931	2,708,640	2,825,066	2,766,860	2,934,608
890 Health System Administration	40,308,769	44,686,004	47,212,148	45,567,879	43,823,396
891 Provident Hospital of Cook County	53,008,336	39,516,938	35,242,553	30,128,082	28,893,173
893 Ambulatory and Community Health Network of Cook County	43,540,357	42,670,495	43,774,135	43,949,046	43,584,187
894 Ruth M. Rothstein CORE Center	5,174,239	5,348,515	5,514,315	5,295,201	5,521,871
895 Department of Public Health	12,254,932	12,718,797	13,218,021	11,794,887	11,415,151
896 Managed Care	-	-	-	10,454,343	13,520,627
897 John H. Stroger, Jr. Hospital of Cook County	279,458,715	274,728,686	310,879,670	293,496,258	289,451,912

*Juvenile Temporary Detention Center is managed by the Court appointed Transitional Administrator, not the Chief Judge.

SUMMARY OF SALARIES BY CONTROL OFFICER

Departments	2010	2011	2012	2013	2014
898 Oak Forest Health Center of Cook County	\$61,530,982	\$33,223,036	\$21,411,741	\$6,386,660	\$6,221,336
Total Cook County Health & Hospital System	\$526,535,160	\$489,053,214	\$515,083,778	\$482,782,763	\$482,782,763
Total Cook County Health & Hospital Systems Board Total Enterprise Fund	\$526,535,160	\$489,053,214	\$515,083,778	\$482,782,763	\$482,782,763
Special Purpose and Election Fund					
Offices Under the President					
President					
565 Department of Homeland Security and Emergency Management	1,032,652	1,191,483	-	-	-
Total President	\$1,032,652	\$1,191,483	\$0	\$0	\$0
Chief Administrative Officer					
501 MFT Illinois First (1st)	10,835,221	17,269,873	15,371,205	15,157,244	15,874,599
510 Animal Control Department	1,158,854	1,068,609	1,107,204	1,103,651	1,114,714
530 Cook County Law Library	2,881,893	2,486,046	2,154,942	1,986,146	1,999,117
Total Chief Administrative Officer	\$14,675,968	\$20,824,528	\$18,633,351	\$18,247,041	\$18,988,430
Chief Information Officer					
545 Geographic Information Systems	1,199,450	926,058	1,051,090	1,404,630	1,472,352
Total Chief Information Officer	\$1,199,450	\$926,058	\$1,051,090	\$1,404,630	\$1,472,352
Total Offices Under the President	\$16,906,070	\$22,942,079	\$19,684,441	\$19,651,671	\$20,460,782
Cook County Health & Hospital Systems Board					
Cook County Health & Hospital System					
544 Lead Poisoning Prevention Fund	269,711	228,051	204,693	222,285	228,990
564 TB Sanitarium District	3,253,431	3,085,886	2,792,484	2,433,425	2,483,818
Total Cook County Health & Hospital System	\$3,523,142	\$3,313,937	\$2,997,177	\$2,655,710	\$2,712,798
Total Cook County Health & Hospital Systems Board	\$3,523,142	\$3,313,937	\$2,997,177	\$2,655,710	\$2,712,798
Elected and Appointed Officials					
Board of Election Commissioners					
525 Board of Election Commissioners - Election Fund	378,929	378,929	378,929	378,929	378,929
Total Board of Election Commissioners	\$378,929	\$378,929	\$378,929	\$378,929	\$378,929
Chief Judge					
538 Juvenile Probation - Supplementary Officers	2,857,923	4,769,896	4,757,317	3,545,059	3,240,516
572 Children's Waiting Room Revenue Fund	-	939,794	848,588	912,003	1,061,822
Total Chief Judge	\$2,857,923	\$5,709,690	\$5,605,905	\$4,457,062	\$4,302,338
Clerk of the Circuit Court					
528 Clerk of the Circuit Court Automation Fund	8,585,553	6,924,049	6,879,108	5,596,878	6,964,494
529 Clerk of the Circuit Court Document Storage Fund	5,955,677	4,917,285	4,701,724	4,681,180	5,239,538
567 Clerk of the Circuit Court Administrative Fund	631,258	633,265	539,617	413,119	509,307

*Juvenile Temporary Detention Center is managed by the Court appointed Transitional Administrator, not the Chief Judge.

SUMMARY OF SALARIES BY CONTROL OFFICER

Departments	2010	2011	2012	2013	2014
Total Clerk of the Circuit Court	\$15,172,488	\$12,474,599	\$12,120,449	\$10,691,177	\$12,713,339
County Clerk					
524 County Clerk - Elections Division Fund	\$6,821,787	\$6,972,281	\$6,766,990	\$7,061,965	\$7,211,740
533 County Clerk - Automation Fund	603,522	812,400	635,972	735,724	795,899
Total County Clerk	\$7,425,309	\$7,784,681	\$7,402,962	\$7,797,689	\$8,007,639
Recorder of Deeds					
527 County Recorder Document Storage System Fund	3,155,017	1,568,133	1,587,226	1,636,583	2,259,882
570 GIS Fee Fund	134,120	2,077,736	1,788,688	1,850,381	1,852,061
571 Rental Housing Support Fee Fund	87,618	416,978	-	-	-
Total Recorder of Deeds	\$3,375,755	\$4,062,847	\$3,375,894	\$3,486,964	\$4,111,943
Sheriff					
535 Intergovernmental Agreement/ETSB	1,125,740	1,147,255	3,079,834	3,007,757	1,060,081
Total Sheriff	\$1,125,740	\$1,147,255	\$3,079,834	\$3,007,757	\$1,060,081
State's Attorney					
561 State's Attorney Narcotics Forfeiture	2,310,960	2,409,131	2,423,741	2,903,409	2,960,979
566 State's Attorney Capital Litigation Trust Fund	2,094,040	-	-	-	-
Total State's Attorney	\$4,405,000	\$2,409,131	\$2,423,741	\$2,903,409	\$2,960,979
Treasurer					
534 County Treasurer - Tax Sales Automation Fund	5,350,369	5,375,724	5,019,775	5,349,424	5,075,834
Total Treasurer	\$5,350,369	\$5,375,724	\$5,019,775	\$5,349,424	\$5,075,834
Total Elected and Appointed Officials	\$40,095,513	\$39,342,856	\$39,406,889	\$38,072,411	\$38,611,082
Total Special Purpose and Election Fund	\$60,526,725	\$65,598,872	\$62,088,907	\$60,379,792	\$61,784,662
Total Salaries	\$1,524,784,925	\$1,417,135,673	\$1,414,165,887	\$1,432,121,159	\$1,469,845,739

*Juvenile Temporary Detention Center is managed by the Court-appointed Transitional Administrator, not the Chief Judge.