

# Cook County Department of Public Health

## Quarterly Report to the Cook County Board in their capacity as the Board of Health of Cook County

September 2015  
Terry Mason MD COO



Cook County DEPT. of  
**Public Health**  
Promoting health. Preventing disease. Protecting you.



COOK COUNTY HEALTH  
& HOSPITALS SYSTEM  
**CCHHS**

# What is Health?

“Health is the behavioral, cultural, economic, educational, physical, and spiritual state of being in which individuals have the ability to enjoy life and contribute positively to their family, community and society.”

Center for African American Health Status Report – July 11, 2002

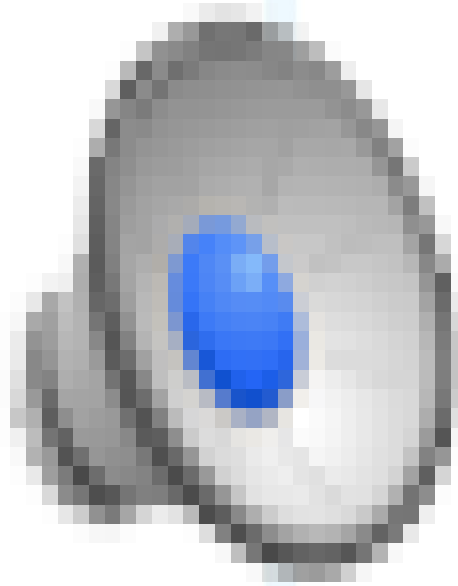


Cook County <sup>DEPT.</sup>  
of  
**Public Health**  
Promoting health. Preventing disease. Protecting you.



COOK COUNTY HEALTH  
& HOSPITALS SYSTEM  
**CCHHS**

# What is Public Health?



Cook County <sup>DEPT.</sup>  
of  
**Public Health**

Promoting health. Preventing disease. Protecting you.



COOK COUNTY HEALTH  
& HOSPITALS SYSTEM  
**CCHHS**

# The 10 Essential Public Health Services

A guiding framework for the responsibilities of local public health systems - *all public, private, and voluntary entities that contribute to the delivery of essential public health services.*



Cook County DEPT. of  
**Public Health**

Promoting health. Preventing disease. Protecting you.



COOK COUNTY HEALTH  
& HOSPITALS SYSTEM  
**CCHHS**



# The 10 Essential Public Health Services

1. **Monitor health status** to identify and solve community health problems
2. **Diagnose and investigate** health problems and health hazards in the community
3. **Inform, educate, and empower** people about health issues
4. **Mobilize community partnerships** to identify and solve health problems
5. **Develop policies and plans** that support individual and community health efforts



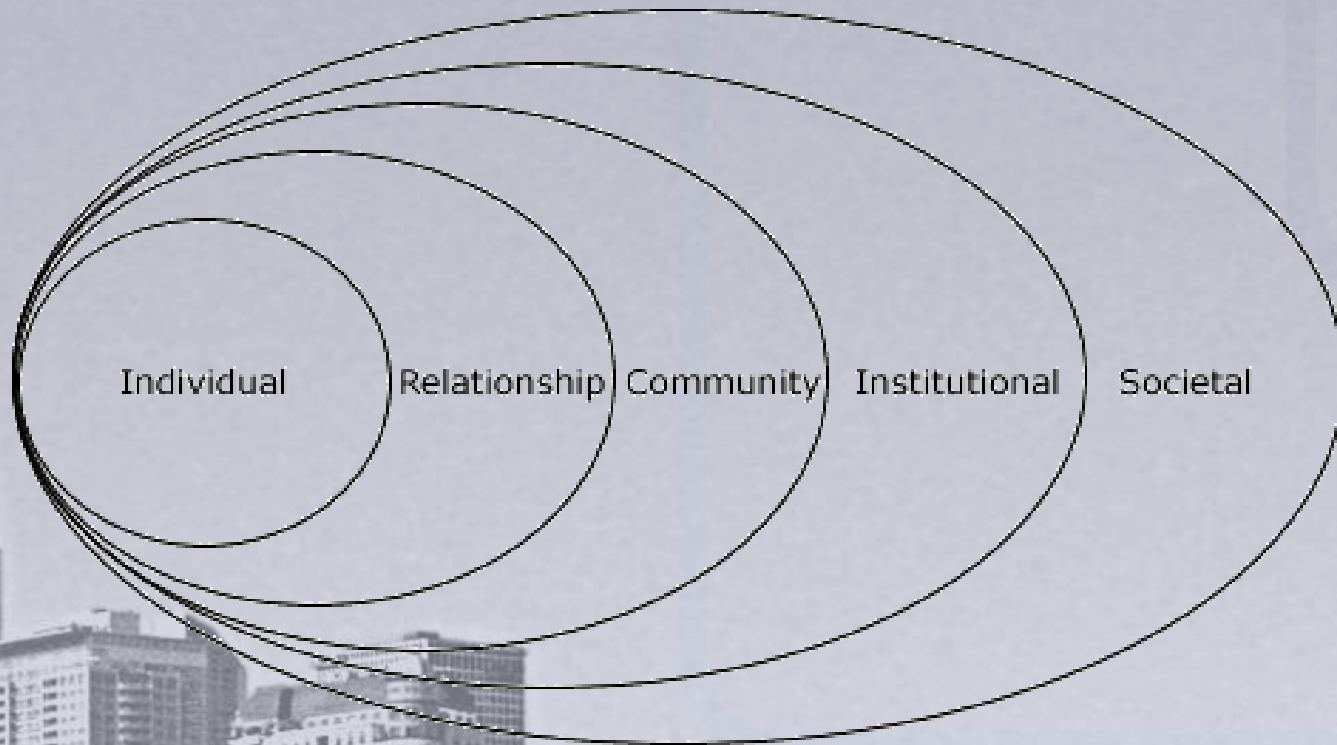


## The 10 Essential Public Health Services (cont'd.)

6. **Enforce laws and regulations** that protect health and ensure safety
7. **Link people to needed personal health services** and assure the provision of health **care** when otherwise unavailable
8. **Assure a competent** public and personal healthcare **workforce**
9. **Evaluate** effectiveness, accessibility, and quality of personal and population-based health services
10. **Research** for new insights and innovative solutions to health problems



# Socio-Ecological Model



Source: <http://www.oregonsatf.org/prevention/index.html>



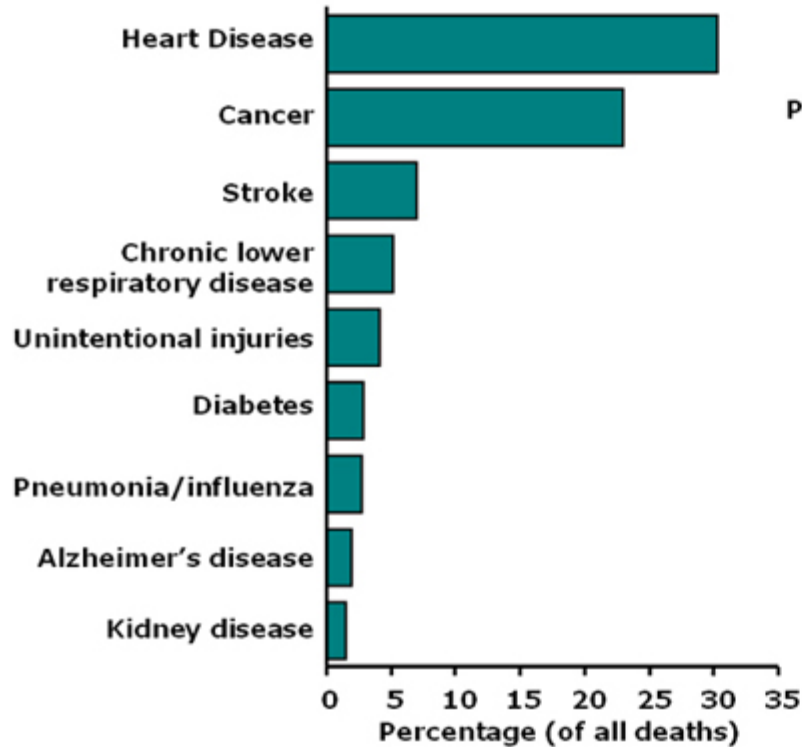
Cook County DEPT. of Public Health

Promoting health. Preventing disease. Protecting you.

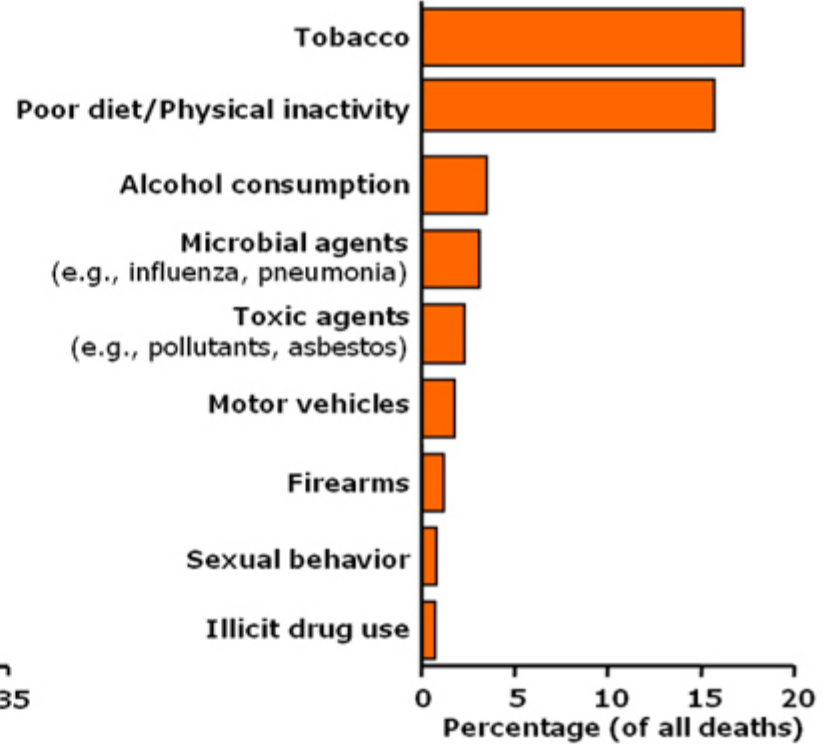


COOK COUNTY HEALTH & HOSPITALS SYSTEM  
CCHHS

### Leading Causes of Death\* United States, 2000



### Actual Causes of Death† United States, 2000



\* Miniño AM, Arias E, Kochanek KD, Murphy SL, Smith BL. Deaths: final data for 2000. National Vital Statistics Reports 2002; 50(15):1-120.

† Mokdad AH, Marks JS, Stroup DF, Gerberding JL. Actual causes of death in the United States, 2000. JAMA. 2004;291(10):1238-1246.



Cook County DEPT. of  
**Public Health**

Promoting health. Preventing disease. Protecting you.



COOK COUNTY HEALTH  
& HOSPITALS SYSTEM  
**CCHHS**



# How big is this problem?

- Role of NCD's (Non-Communicable Diseases)
  - What we call heart disease, stroke, diabetes, obesity killing 1 million Americans yearly
  - All share common links to causes:
    - **Diet**, exercise, smoking
  - All share a common approach and barriers
    - Food industrial complex influence
    - Resistance to change, policy and systems
    - Lack of funding and resources for those engaged in helping people to become healthier



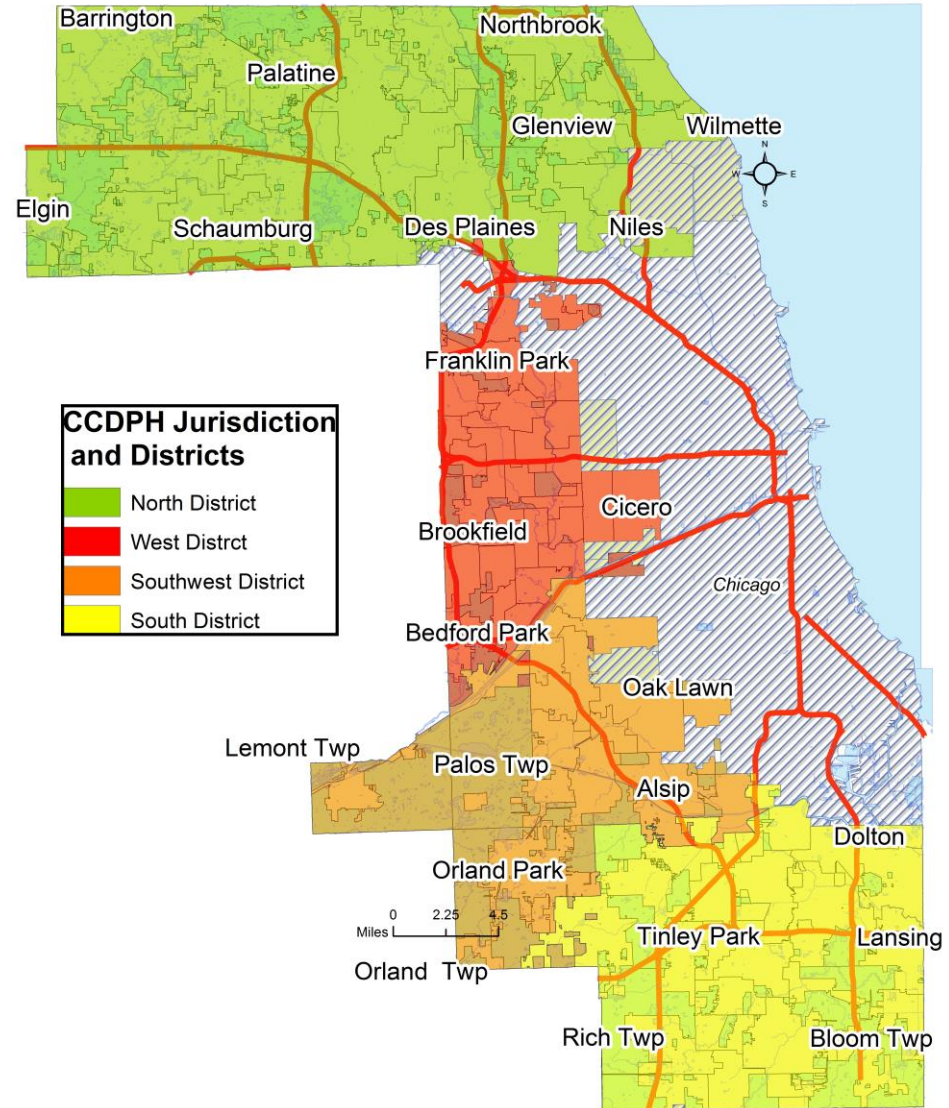
# Cook County Department of Public Health

- Established by ordinance in 1945
- Regulatory and police authority delegated from IDPH
- Governance
  - Cook County Board Commissioners is our Board of Health
  - President of County Board is President of the Board of Health
  - CCDPH COO is subject to the control of CC Board and direction of CCHHS CEO



# CCDPH Jurisdiction

- 700 square miles
- 2.39 million residents
- 125 municipalities, 30 townships, and unincorporated areas in **suburban** Cook County
- Excludes areas with IDPH Certified Public Health Departments
  - Chicago, Stickney, Evanston, Oak Park, Skokie
- Exception: CCDPH is responsible for TB care and surveillance for all of suburban Cook County



Cook County DEPT. of  
**Public Health**

Promoting health. Preventing disease. Protecting you.



COOK COUNTY HEALTH  
& HOSPITALS SYSTEM  
**CCHHS**

# Who We Are

- Mission:
  - To optimize health and achieve health equity for all people and communities of Cook County through our leadership and collaborations, focusing on health promotion and prevention, while advocating for and assuring the natural environmental and social conditions necessary to advance physical, mental, and social well-being.



EQUALITY

EQUITY

THE DIFFERENCE MATTERS.



# Where Are We Located?

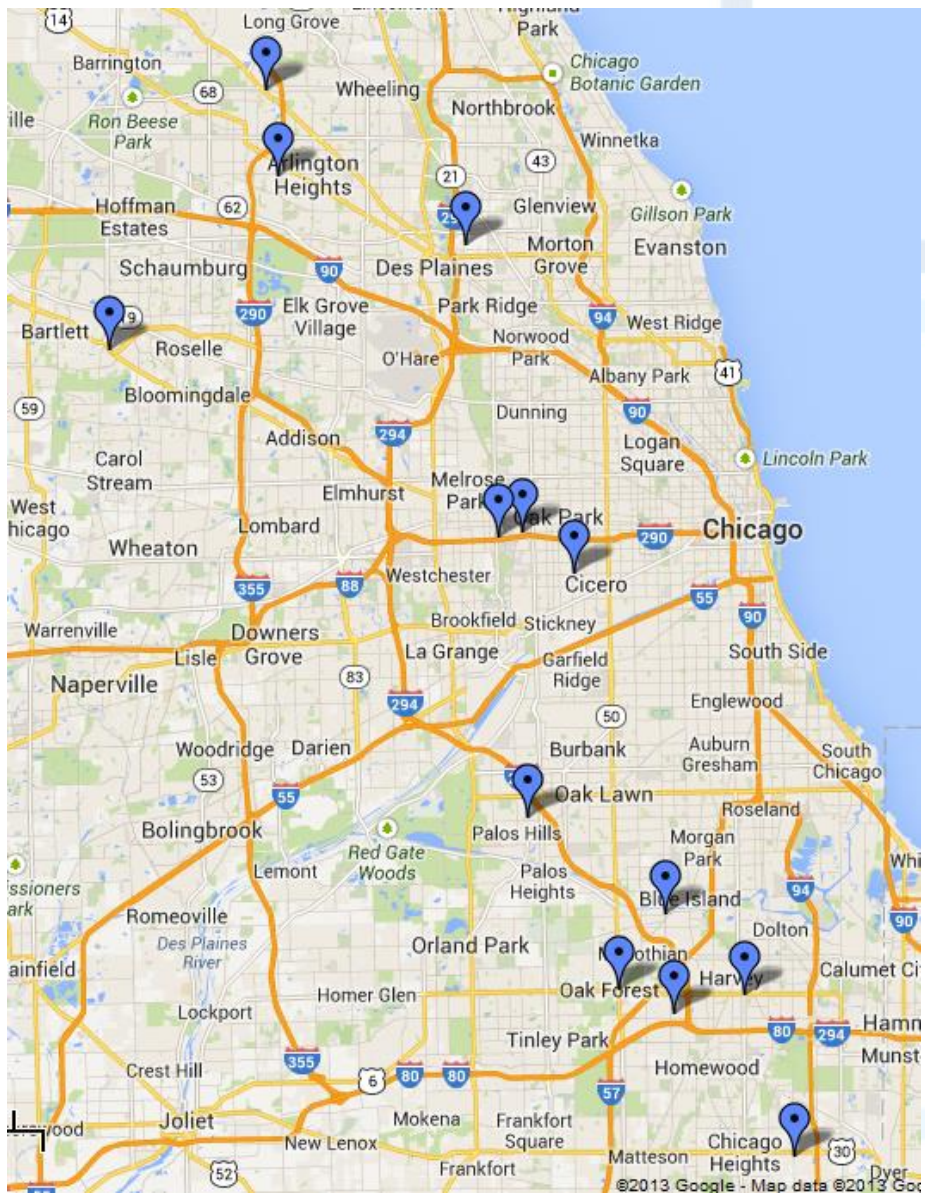


Cook County <sup>DEPT.</sup>  
*of*  
**Public Health**

Promoting health. Preventing disease. Protecting you.



COOK COUNTY HEALTH  
& HOSPITALS SYSTEM  
**CCHHS**



Cook County DEPT. of  
**Public Health**

Promoting health. Preventing disease. Protecting you.



**COOK COUNTY HEALTH & HOSPITALS SYSTEM**  
**CCHHS**

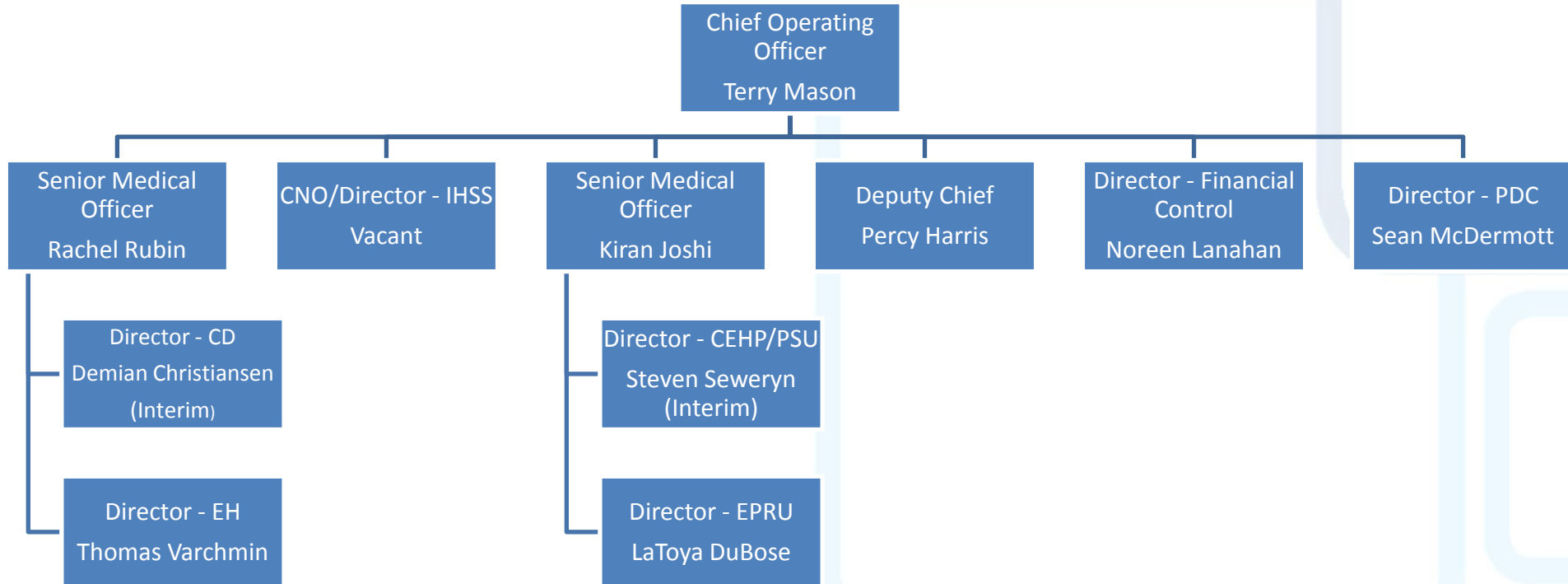
# Facility Statistics

Location	Services	Size	No. of FTE	Type
Oak Forest	CD, EPI, Admin, Finance, CPCU (B14), MM	57,000 sq. ft.	81 (60)	OFHC
Rolling Meadows	NDO, Env,	12,500 sq. ft.	37 (33) (ACHN Transfer)	Courthouse
Bridgeview	SWDO, Env, Dental, WIC	12,500 sq. ft.	39 (36) (ACHN Transfer)	Courthouse
Markham	SDO, WIC (Rm 250 shared with TASK and Grand Prairie)	10,500 sq. ft.	36(24) (ACHN Transfer)	Courthouse
Maywood	WDO,WIC	14,900 sq. ft.	27 (19) (ACHN Transfer)	Lease
Palatine	WIC	2,500 sq. ft.	5	Lease
Hanover Park	WIC	2,100 sq. ft.	5	Lease
Cicero	WIC	2,000 sq. ft.	7	w/ACHN
Robbins	WIC	2,000 sq. ft.	6	w/ACHN
Cottage Grove	WIC, Dental	2,200 sq. ft.	6	w/ACHN
Forest Park	TB Clinic, CD	20,737 sq. ft.	35	Owned
Des Plaines	TB Clinic	2,445 sq. ft.	7	Owned
Harvey	Unoccupied	2,698 sq. ft.	0	Owned





# Organizational Structure



# Communicable Disease Prevention and Control Unit

Responsible for prevention and control of more than 70 infectious disease within Suburban Cook County.

- General Communicable Disease
- Enhanced Surveillance
- HIV Surveillance and Prevention
- Infection Prevention
- Sexually Transmitted Infections
- Tuberculosis Surveillance and Prevention
- Vaccine Preventable Diseases Surveillance and Prevention



# Measles Outbreak

- This year, 14 measles cases diagnosed in Suburban Cook (+1 in Chicago)
  - 12 children
  - 3 adults
- 6 infants with 11 visits exposed 180 children and staff
- 66 required active monitoring, none developed disease
- Legislation to mandate vaccination for daycare workers is pending



# Environmental Health Services Unit

Regulatory arm of CCDPH, empowered to enforce Cook County and Illinois state laws related to environmental health issues in suburban Cook County.

- Individual Sewage Disposal Systems and Water Wells
- Indoor Air Quality
- Food Program
- Swimming Pool Program
- Enforcement of Lead Poisoning Prevention Laws
- Vector Control Program
- Public and Private Nuisances
- Tanning and Tattoo Parlors
- Mobile Home Parks
- Retail Tobacco



Cook County DEPT. of  
**Public Health**

Promoting health. Preventing disease. Protecting you.



COOK COUNTY HEALTH  
& HOSPITALS SYSTEM  
**CCHHS**

# Integrated Health Support Services (Public Health Nursing)

IHSS recognizes the client as a unique individual,  
a member of a family, and a member of  
community



Cook County DEPT. of  
**Public Health**

Promoting health. Preventing disease. Protecting you.



COOK COUNTY HEALTH  
& HOSPITALS SYSTEM  
**CCHHS**

# Public Health Nursing Home Visit Programs

- High Risk Infant Follow-Up Program (APORS)
- Sudden Infant Death Syndrome (SIDS) Program
- Lead Program
- Congenital Syphilis Program
- Perinatal Hepatitis B Prevention Program
- New Born Screening Program
- Genetics Program
- Tuberculosis Program
- Prenatal Program
- Referral to Care Program



# Public Health Community Programs

- Women, Infants and Children (WIC) Nutrition Program
- Breast and Cervical Cancer Screening Program (IBCCP)
- Hearing and Vision Screening Program
- Emergency Preparedness Responders
- Clinical preceptors for local universities



# Community Epidemiology and Health Planning Unit

Monitors health problems, disparities and trends by assembling, analyzing and disseminating data and information about the health of Suburban Cook County.

- Conducts community health assessment for suburban Cook County
- Monitors health status indicators such as disease, injury, birth outcomes, mortality, and risk/preventive factors
- Examines health policy issues
- Coordinates accreditation activities
- Convenes and facilitates Community Health Advisory Committee made up of community stakeholders





# Prevention Services Unit

Promote health and wellness in collaboration with partners to advance changes in community and organizational practices and policies

- Health promotion – outreach, education
- Tobacco prevention and control
- Violence prevention
- Lead based paint hazard control
- Outreach, education, policy development
- Lead poisoning reporting



# Prevention Services Unit

- Partnerships to Improve Community Health (**PICH**)
  - authored in the Prevention Services Unit
- Builds on the previous CDC grant:
  - Communities Putting Prevention to Work (**CPPW**)
- Leveraging relationships and partnerships from previous work
  - Alliance for Healthy and Active Community (AHAC)
    - 20+ community partner agencies including
    - Also Cook County agencies:
      - Housing Authority of Cook County
      - Forest Preserve District of Cook County





Healthy  
HotSpot

*Partnerships for Healthy Living*



# PICH (Partnerships to Improve Community Health) Overview



Cook County <sup>DEPT. of</sup>  
Public Health

Promoting health. Preventing disease. Protecting you.



COOK COUNTY HEALTH  
& HOSPITALS SYSTEM  
CCHHS

# PICH Grant Summary

- Three-year project period (Sept 30, 2014 – Sept 29, 2017)
- Awarded \$2,480,807 in Year 1/3
- Collective reach to 100% of jurisdiction
  - 33 identified priority communities
- Four focus areas
  1. Increases access to tobacco-free environments
  2. Increase access to environments with healthy food & beverages
  3. Increase access to: physical activity opportunities
  4. Increase access to: community-based preventive resources



# Healthy HotSpot

- In suburban Cook County, Healthy HotSpot partnerships are leading a movement to create healthy, vibrant places that will make **all of suburban Cook County a Healthy HotSpot, one spot at a time.**
- Healthy HotSpot is a major branding initiative for CCDPH!



# Partnerships that make it work

- Community Health Advisory Committee
  - Academic, community based organizations, local government, community and faith based members
- CCDPH Alliance for Healthy and Active Communities (AHAC)
- For healthy eating and active living
  - Coalition for Lowering Obesity for Chicago Children
  - Alliance for a Healthier Generation
  - Illinois Public Health Institute
  - Active Transportation Alliance
  - Forest Preserve District of Cook County



# Partnerships that make it work

- For Tobacco Free living –
  - American Lung Association
  - Respiratory Health Association
  - South Suburban Cook County Mayors and Managers
  - Housing Authority of Cook County
- For Clinical/Community Linkages (CDSMP/DSMP)
  - Age Options
- For a Prepared Cook County
  - Medical Reserve Corps



# Emergency Preparedness and Response Unit

Coordinates public health preparedness efforts and partnerships to plan, respond, and recover from events impacting the health of our residents

- Develop and maintain plans for:
  - Pharmaceutical stockpile distribution and dispensing
  - Pandemic disease
  - Mass vaccination
  - Quarantine and isolation
  - Mass casualty





# Lead Poisoning Prevention and Healthy Homes (LPPHH)

- Works to prevent, reduce, and eliminate the threat of lead hazards in and around the home.
- Activities include:
  - Lead Based Paint Hazard Control
  - Case management for children with elevated blood lead levels
  - Inspect and refer for lead abatement



# Tuberculosis

- Treatment for latent TB infections and TB disease including direct observed therapy (DOT).
- Case management for clients diagnosed with active TB.
- Screening for high-risk clients
  - compromised immune system,
  - immigrants from endemic areas, or
  - close contacts of someone with active TB.



# Reports

- County Health Rankings
- Community Health Status Assessment
- Community Profiles
- Corner Stores
- Place matters
- Vital statistics: Births, Deaths
- School Health Profiles
- Lead Report
- HIV/AIDS Surveillance
- TB Surveillance
- STI Surveillance
- Annual Report



# Regional Relationships

- NIPHC – Northern Illinois Public Health Consortium
  - Representing 80% population of Illinois
    - Cook County
    - Chicago
    - Skokie
    - Lake
    - DuPage
    - Kendall
    - Will
    - Mchenry
    - Grundy
    - Kane
    - Winnebago



# Accomplishments

- PHAB accreditation and maintenance
- Transition of clinical services to ACHN
- Measles response
- Ebola planning
- Change Institute
- School Nurse Meeting
- PICH activities
- Lead program QI activities
- Selected to participate in PHAB QI Leaders Academy



# Select Publications

- Bialek, Stephanie R., et al. "First Confirmed Cases of Middle East Respiratory Syndrome Coronavirus (MERS-CoV) Infection in the United States, Updated Information on the Epidemiology of MERS-CoV Infection, and Guidance for the Public, Clinicians, and Public Health Authorities-May 2014." *MMWR*. Morbidity and mortality weekly report 63.19 (2014): 431-436.
- Epstein, Lauren, et al. "New Delhi metallo- $\beta$ -lactamase-producing carbapenem-resistant *Escherichia coli* associated with exposure to duodenoscopes." *JAMA* 312.14 (2014): 1447-1455.



- Examples
- Environmental Health Service (EH)
- Communicable Di
- Public Policy (PD)
- Public Relations (
- Operations/Maint
- Workforce Developo
- +

Add a Klip Layout

Tom Varchmin, Director of Environmental Services



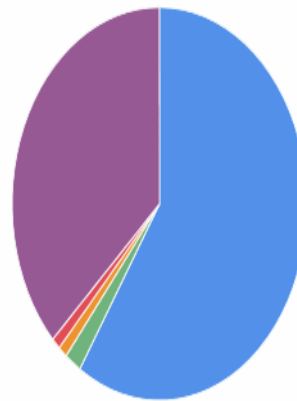
Mission statement

The Environmental Health Unit strives to preserve and protect

Environmental Health Service Annual Report

Annual Data	FY 2013	FYI 2014	FYI 2015
Revenue (\$)	\$550,706.00	\$506,220.00	\$210,803.00

CCDPH Grants for FY2014 - 2015



- IDPH Local Health Protection (37.6% of Local Health Protection Grant) (\$775,794) [59%]
- IDPH Potable Water (\$23,875) [2%]
- IDPH Tanning Facilities Inspection (1/3 of 3 year grant for \$39, 000) (\$13,000) [1%]
- IDPH Tattoo Facilities Inspection (1/3 of 3 year grant for \$39, 000) (\$13,000) [1%]
- IDPH Vector Surveillance (\$486,773) [37%]

