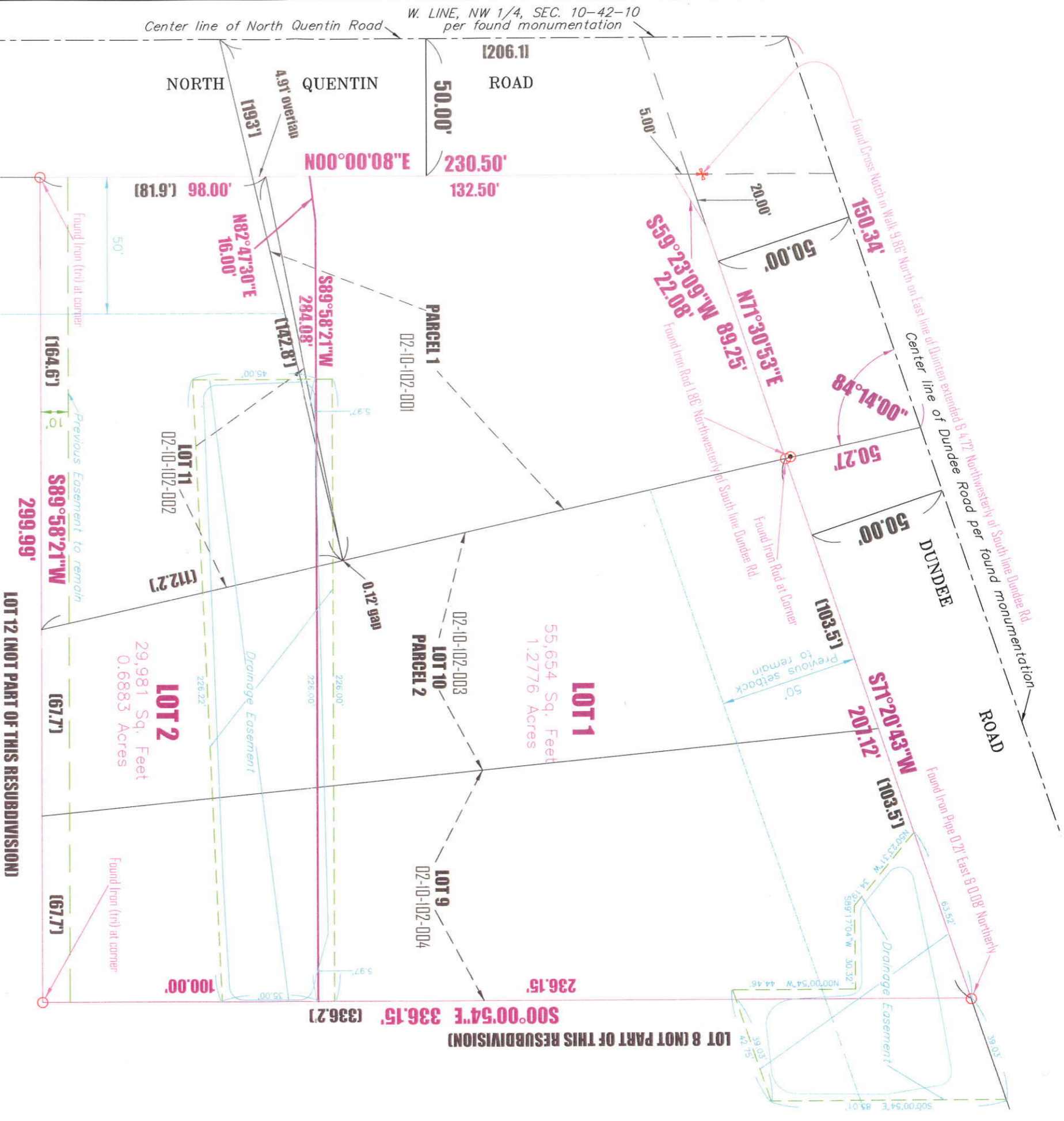


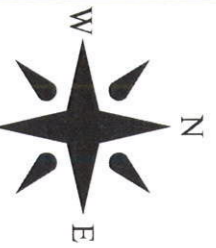
Coutretsis Subdivision

BEING A SUBDIVISION OF UNSUBDIVIDED LANDS (PARCEL 1) AND A RESUBDIVISION OF PART OF ARTHUR T. MCINTOSH AND COMPANY'S DEER GROVE FARMS (PARCEL 2) OF THE WEST 1/2 OF THE NORTHWEST 1/4 OF SECTION 10, TOWNSHIP 42 NORTH, RANGE 10, EAST OF THE THIRD PRINCIPAL MERIDIAN



Legend

- = Found Iron Pipe/Rod/Tri
- = Found Cross Notch = FCN (At Corner unless indicated otherwise)
- = D&D is Drainage & Detention
- = **S89°58'21"W 299.99'** LOT 2 = Created Lots
- = **LOT 11** 10-42-102-002 = Former/Previous Lots/PIN's
- = Sub-divided lines
- = Previous division lines
- = Easement
- = Previous Easement
- = Previous Set Back



Premier Land Surveying L.L.C.

131 Schiller Place
Itasca, IL 60143
(630) 875-1417

Client: Tom Coutretsis
3515 Woodland Lane
Long Grove, IL 60047

Location:
773 & 795 W Dundee Rd
Palatine, IL 60074

Rev. Date	Rev. Description

Field Work Completed: December 2012
Job Number 2012-0054 Sheet 1 of 2 Map Sheet