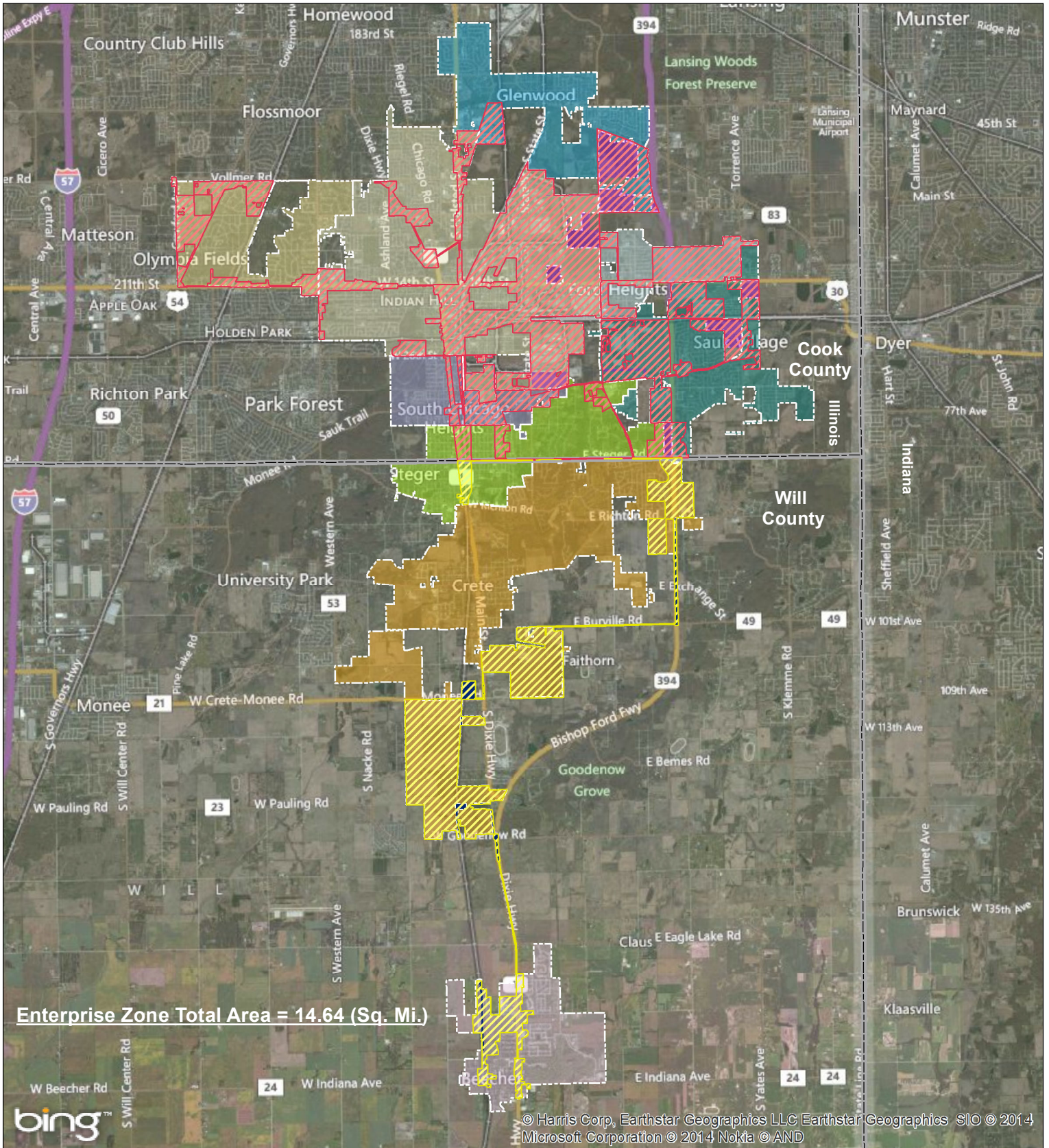


Attachment A Lincoln-394 Enterprise Zone Map

Beecher/Chicago Heights/Crete/Ford Heights/Glenwood/Olympia Fields/
Sauk Village/South Chicago Heights/Steger/Unincorporated Cook County/Unincorporated Will County



Enterprise Zone Total Area = 14.64 (Sq. Mi.)



© Harris Corp, Earthstar Geographics LLC Earthstar Geographics SIO © 2014 Microsoft Corporation © 2014 Nokia © AND

	Enterprise Zone In Will County		Beecher		Olympia Fields
	Enterprise Zone In Cook County		Chicago Heights		Sauk Village
	Unincorporated Cook County In Enterprise Zone		Crete		South Chicago Heights
	Unincorporated Will County In Enterprise Zone		Ford Heights		Steger
	County Boundary		Glenwood		

