

# Cook County Department of Public Health

## 4<sup>th</sup> Quarterly Report

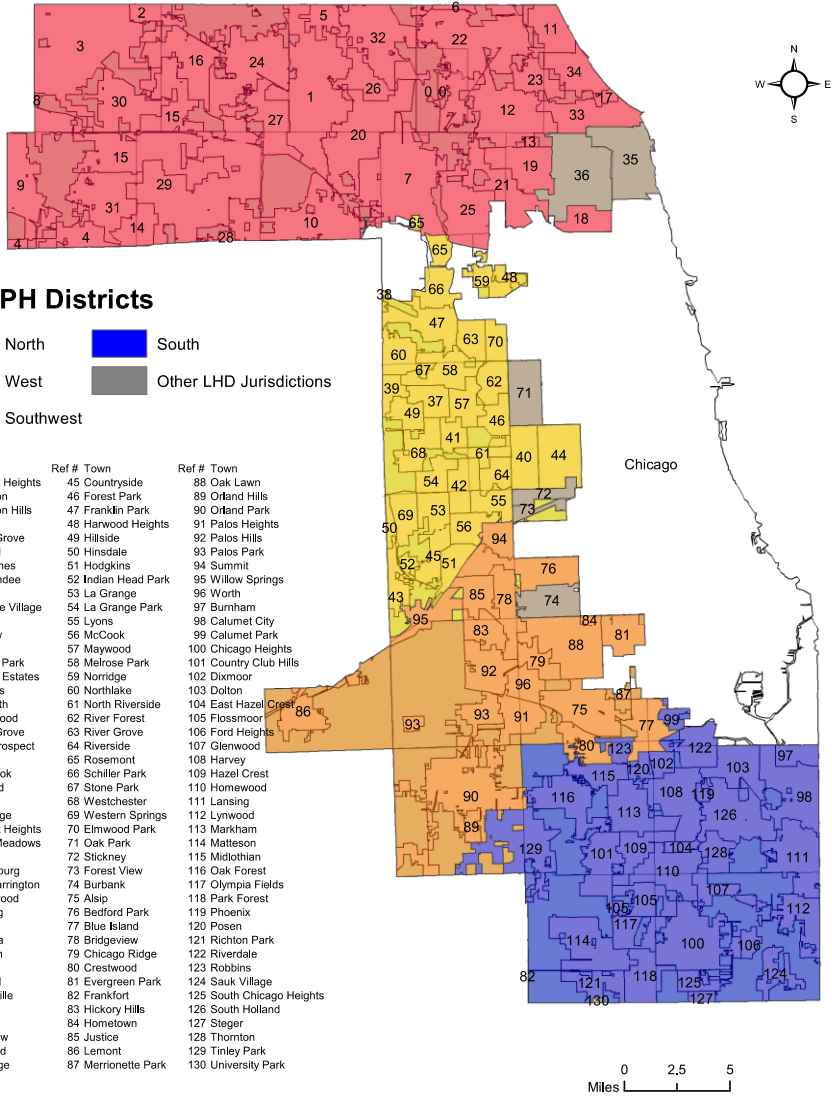
October 2018

Cook County Board  
in their capacity as the  
Cook County Board of Health

# CCDPH Jurisdiction

- All of Cook County **EXCEPT** where there is a state certified health department:

- Chicago
- Evanston
- Oak Park
- Skokie
- Stickney Township: Burbank, Forest View, and Stickney



# Emergency Preparedness and Response Unit (EPRU) Overview Statement

- EPRU coordinates with the Cook County Department of Homeland Security (DHSEM), and other partners to plan for, respond to, and recover from public health events impacting Suburban Cook County residents.



Cook County DEPT. of  
**Public Health**

Promoting health. Preventing disease. *Protecting you.*



COOK COUNTY HEALTH  
& HOSPITALS SYSTEM  
**CCHHS**

# Primary Responsibilities

- Ensure CCDPH is prepared to effectively respond to public health emergencies.
- Create plans that enable CCDPH to receive, distribute and dispense Strategic National Stockpile (SNS) medications/vaccines to Suburban Cook County residents in a timely fashion.



# Public Health Emergency Preparedness Grants

7/1/17 – 6/30/18

Grant		Amount (\$)
CDC/IDPH Public Health Emergency Preparedness (PHEP)		\$1,143,346
CDC/IDPH Cities Readiness Initiative (CRI)		\$148,685
	Total	\$1,292,031

IDPH = Illinois Department of Public Health; PHEP = Public Health Emergency Preparedness; CRI = Cities Readiness Initiative

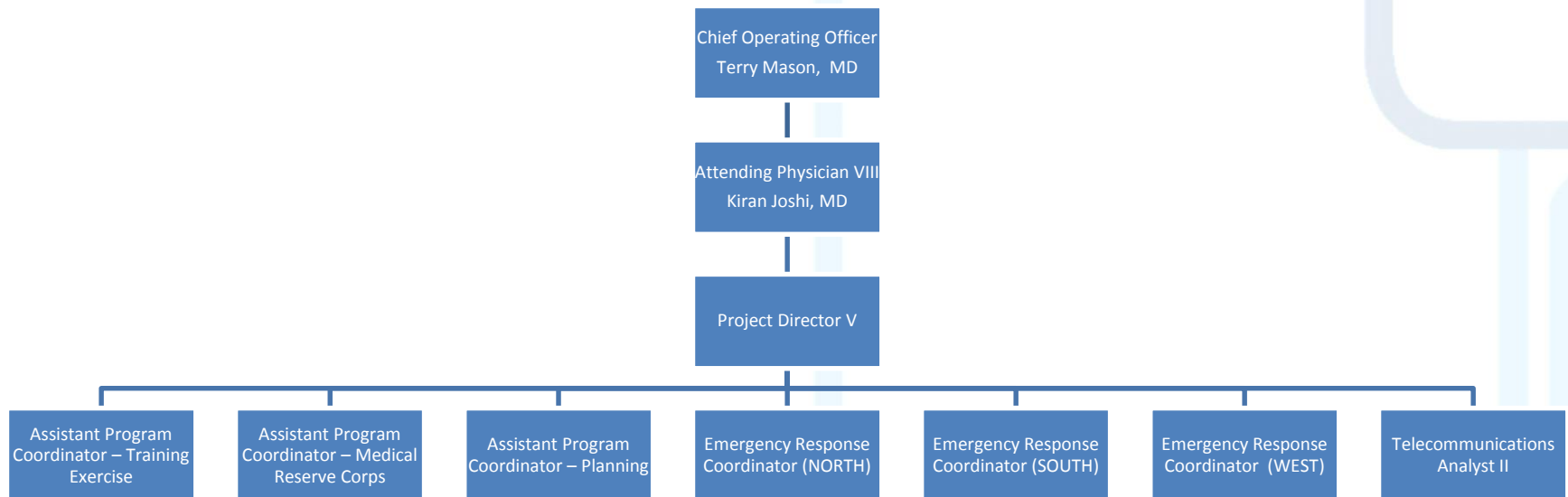


Cook County DEPT. of  
**Public Health**  
Promoting health. Preventing disease. Protecting you.



COOK COUNTY HEALTH  
& HOSPITALS SYSTEM  
**CCHHS**

# Emergency Preparedness and Response Unit (EPRU) Organizational Structure



# Public Health Emergency Preparedness Events

- Bioterrorism (e.g. Anthrax attack)
- Pandemics (e.g. H1N1 influenza)
- Natural disasters (e.g. floods, tornadoes)
- Man-made disasters (e.g. chemical spills)



# Why is our work important?

## Consider pandemic influenza...

- CCDPH would be required to ensure vaccination of the entire Suburban Cook County population
  - Using Strategic National Stockpile assets (i.e. vaccine)
  - Requires many medical professionals, volunteers & space
  - Requires extensive planning, training and exercising at the county and local (community) levels
  - **Partner relations are key to the success of preparedness and response work!**
    - Cook County government agencies, municipal leadership, first responder community





# Government Agencies Supporting Public Health Emergency Preparedness

## Federal

- CDC – Office of Public Health Preparedness and Response

## State

- IDPH – Office of Preparedness and Response

## Local

- CCDPH – Emergency Preparedness and Response Unit
- Cook County Department of Homeland Security and Emergency Management (DHSEM)



# Points to Note

- CCDPH must use all staff to conduct the preparedness and response activities
  - Population/service area warrants co-operation and co-ordination of diverse municipalities
- DHSEM and other County, State and Federal partners will be coordinated by CCDPH



# Performance Metrics

- Training and Exercise
- Infrastructure
- Volunteer Management



# Oak Forest Vaccination Exercise



Cook County DEPT. of  
**Public Health**

Promoting health. Preventing disease. *Protecting you.*



**COOK COUNTY HEALTH  
& HOSPITALS SYSTEM**  
**CCHHS**

# CCDPH Nurse and Employee Volunteer at Work



Cook County DEPT. of  
**Public Health**  
Promoting health. Preventing disease. *Protecting you.*



**COOK COUNTY HEALTH & HOSPITALS SYSTEM**  
**CCHHS**

# QUESTIONS?



Cook County DEPT. of  
**Public Health**

Promoting health. Preventing disease. *Protecting you.*



COOK COUNTY HEALTH  
& HOSPITALS SYSTEM  
**CCHHS**