



CREATE

KEEPING THE GO IN CHICAGO

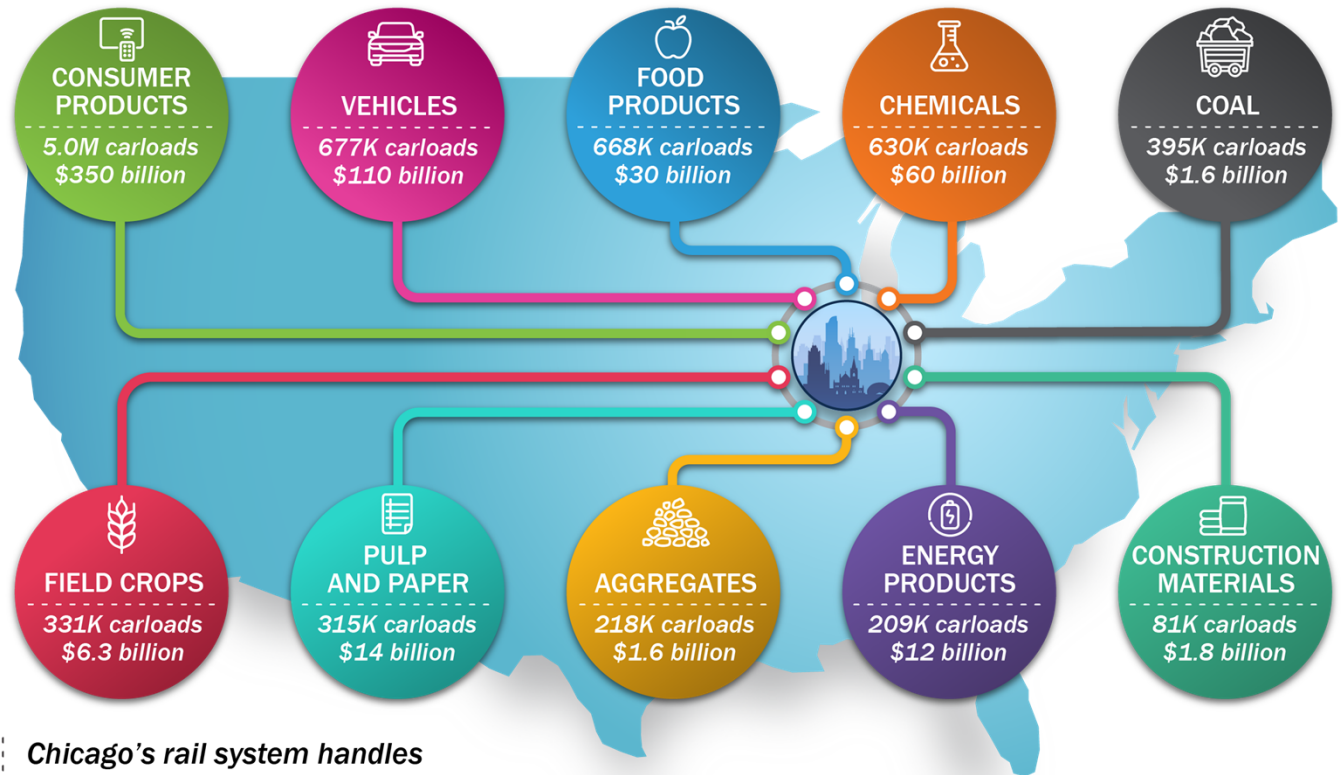
**Chicago Region
Environmental and Transportation
Efficiency Program**

**Cook County
Transportation Committee**
May 12, 2021



Chicago: Hub of the American Rail Network

CHICAGO REGION TOP COMMODITIES BY RAIL



Chicago's rail system handles

47% OF INTERMODAL RAIL CONTAINERS
& **28%** OF RAIL CARS IN THE U.S.

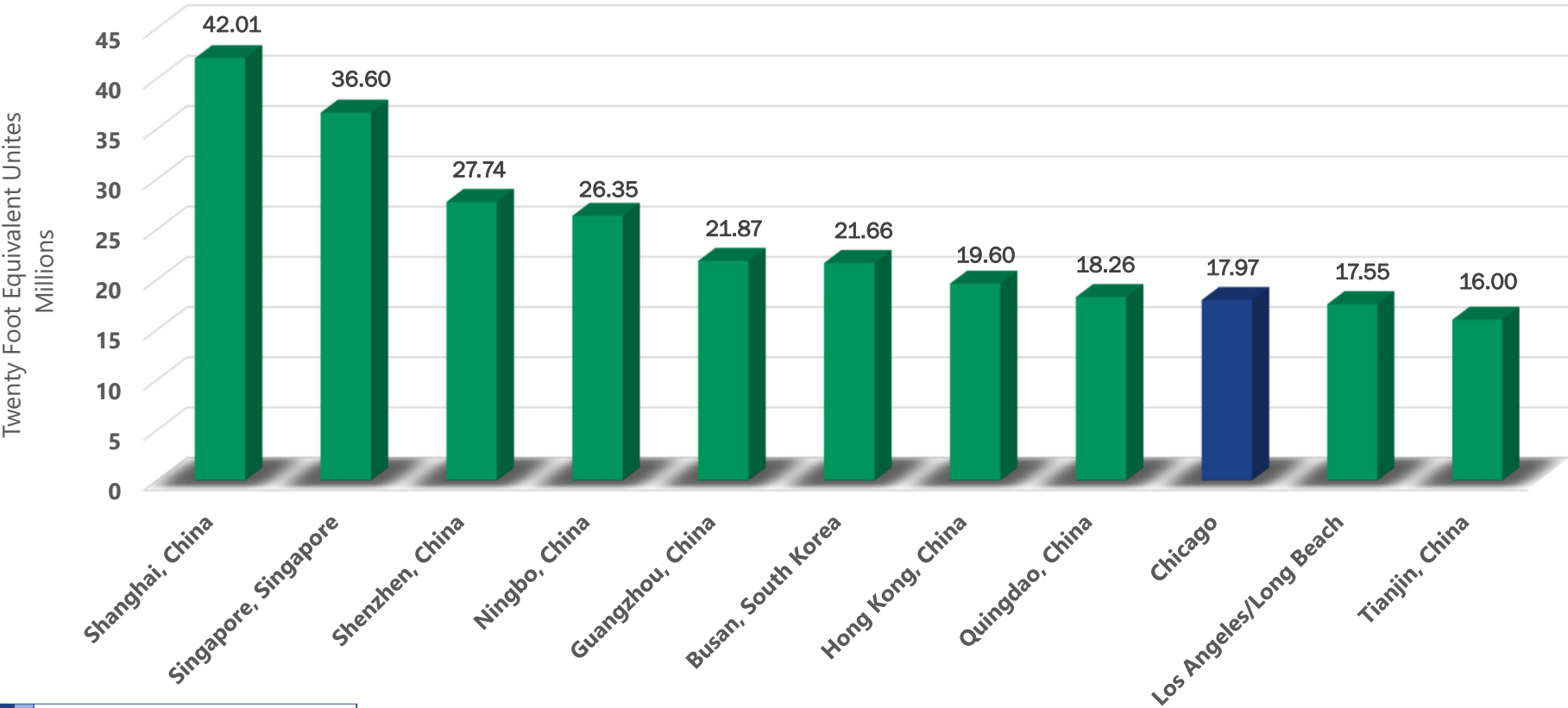
\$641 BILLION WORTH OF GOODS EACH YEAR

Source: Annual Carloads and Value, 2017 STB Confidential Waybill Sample.

WWW.CREATEPROGRAM.ORG



Top Global Container Ports, 2018



Source: Chicago Metropolitan Agency for Planning Intermodal Facility Lift Counts and Regional TEU Estimate, 2019; World Shipping Council, July 2019.

What is CREATE?

A \$4.6 billion Public-Private Partnership (PPP) to improve transportation through the Chicago region by:

- Increasing capacity, speed, and reliability for freight train traffic
- Separating freight and commuter trains at 6 key junctions
- Eliminating 25 road/rail grade crossings through grade separations

CREATE is a cooperative program among:

- US Dept. of Transportation (FHWA & FRA)
- Illinois Dept. of Transportation (IDOT)
- Chicago Dept. of Transportation (CDOT)
- Cook County Dept. of Transportation and Highways (DOTH)
- 6 major North American freight rail carriers and 2 switching railroads
- 2 passenger carriers (Amtrak and Metra)



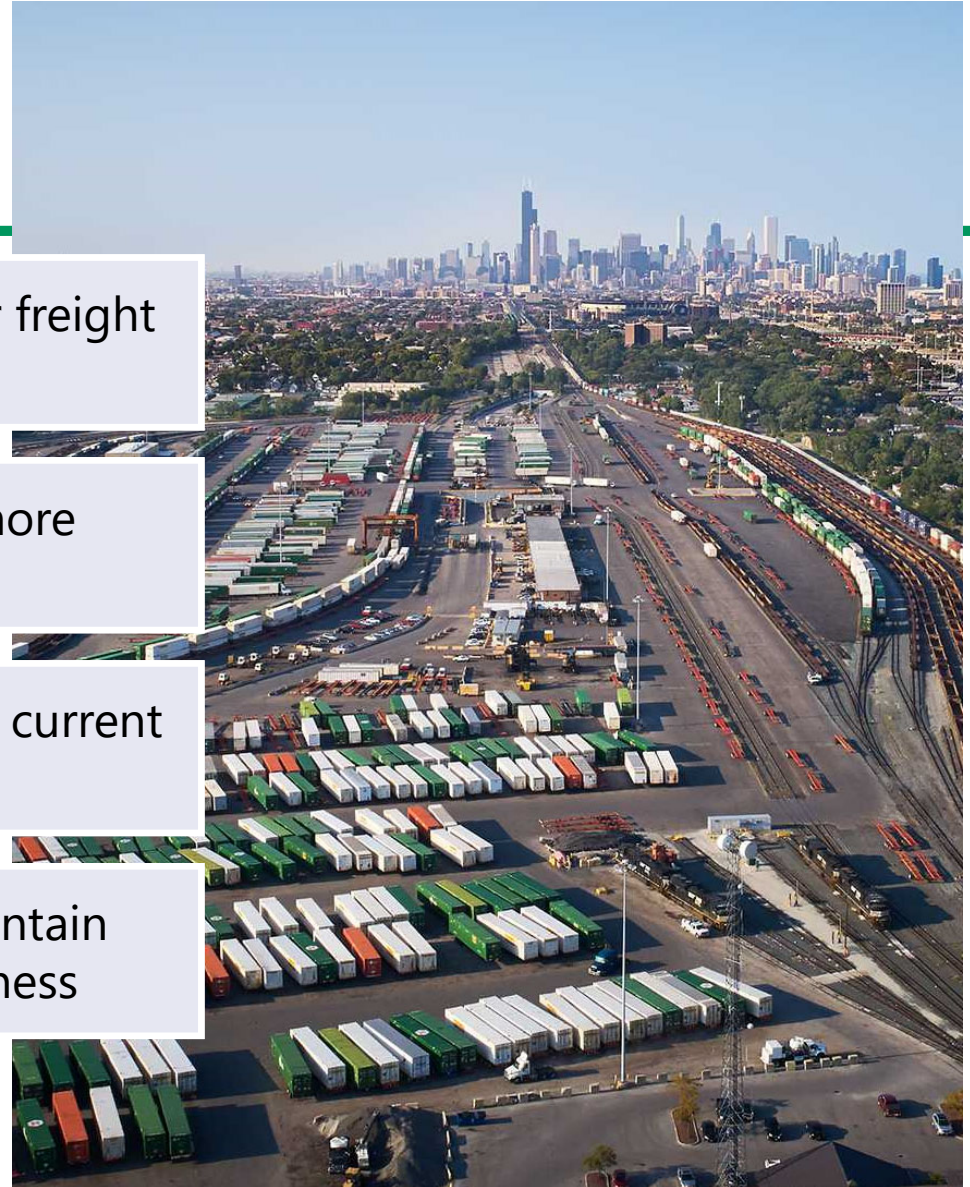
Why CREATE is Needed

The Chicago region remains the nation's premier freight and rail hub

Freight rail trade (by value) within Chicago will more than double between 2012 and 2045

Many of the region's rail lines are inadequate for current and future freight and passenger needs

Modernizing the rail network is necessary to maintain and improve our region's economic competitiveness



Source: Chicago Metropolitan Agency for Planning

CREATE Program

70 Projects

- 25 road/rail grade separations
- 6 passenger/freight rail grade separations
- Railroad projects to improve rail infrastructure and upgrade technologies
- Viaduct improvement program
- Grade crossing safety enhancements
- Rail operations and visibility improvements



Project Status

Completed projects

31

Projects under construction (Phase III)

4

Projects in final design (Phase II)

8

Projects in environmental review (Phase I)

8

Remaining projects

19

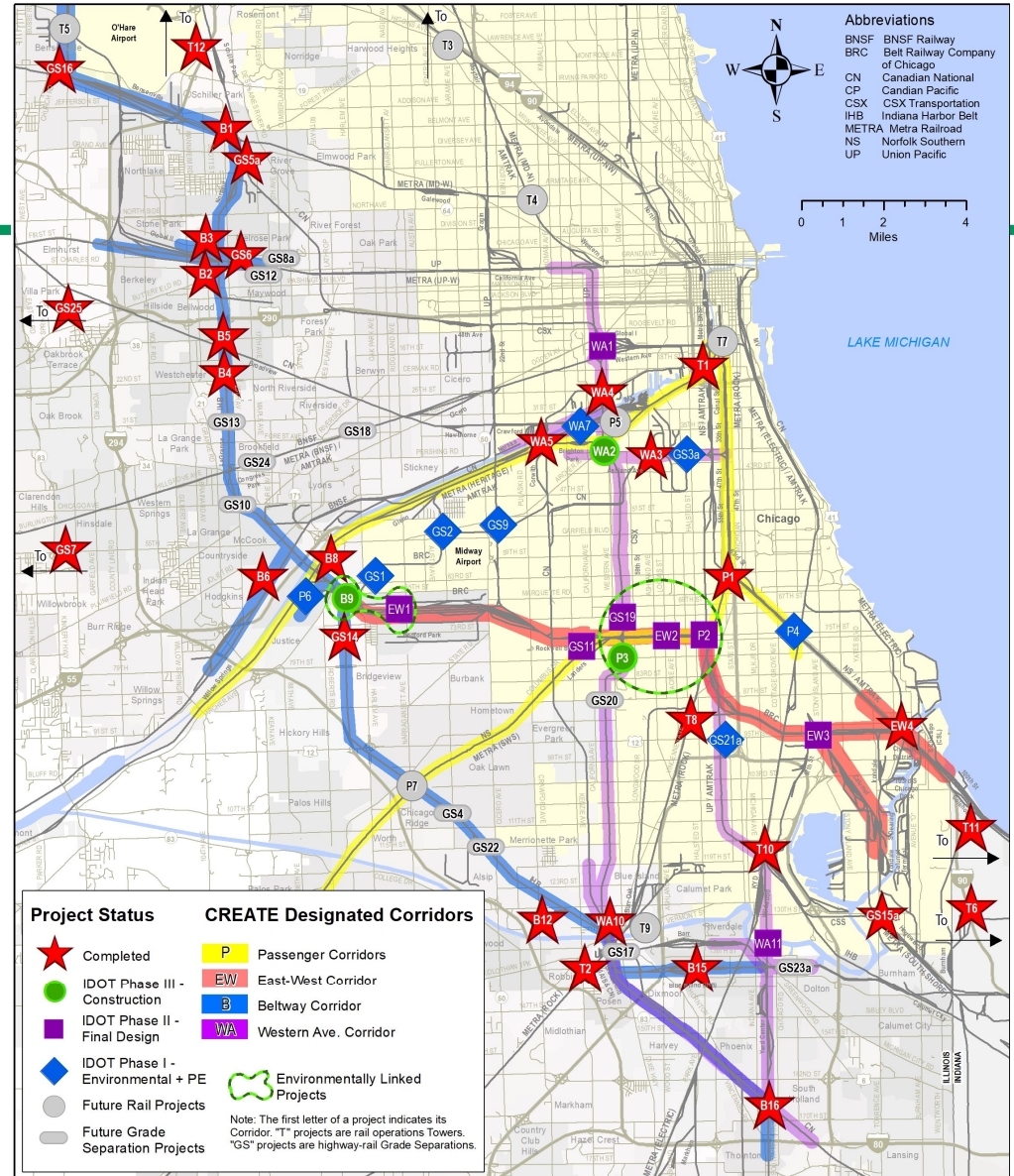
Four Corridors

P Passenger Corridors

EW East-West Corridor

B Beltway Corridor

WA Western Avenue Corridor



How CREATE Benefits Communities

Currently, freight and passenger trains, motorists, and pedestrians are delayed at grade crossings

Communities are impacted by train idling, noise, and restricted access

Motorists and pedestrians take safety risks going through or around blocked crossings

CREATE grade separation projects and other infrastructure improvements ameliorate these issues



Northeastern Illinois Grade Crossing Prioritization



NORTHEASTERN ILLINOIS PRIORITY GRADE CROSSINGS



Joint evaluation between local and state agencies of the region's busiest railroad crossings



Illinois Department
of Transportation



Chicago Department
of Transportation



Chicago Metropolitan
Agency for Planning

Identified priority grade separations or crossing improvements

- 47 priority crossing locations selected
 - 9 groupings of multiple crossings
 - 16 crossings are also part of the CREATE Program
 - 10 included in Cook County Freight Plan

Benefits of CREATE



Passenger train delay reduced by over 1.3 million passenger hours annually



92,000 hours of truck delay and 230,000 hours of motorist and bus passenger delay will be saved



200 vehicle crashes with trains will be avoided



2,800 metric tons/year avoided emissions from idling vehicles



Enables extra 50,000 freight trains to travel through the greater Chicago rail network annually



122 million tons of freight per year would travel by rail, avoiding 18,500 truck trips per day on highways

CREATE Funding Commitments

The CREATE Program has received funding commitments totaling \$1.6 billion so far, from a variety of public and private sources

Federal:	\$647 million*
State:	\$461 million**
Railroads:	\$375 million***
Local Governments:	\$150 million

An estimated \$3 billion remains needed to complete the full Program of projects.

* Does not reflect the \$13 million 2019 CRISI Grant

** Does not reflect the \$400 million allocated to the CREATE Program and \$118 million for the 63rd Street and Harlem Avenue Grade Separation (GS1) in the 2019 Rebuild Illinois Capital Program

*** Private railroads invest an additional \$450 million per year in the Chicago Terminal beyond CREATE Program investments

Stewardship of Federal Investments

Federal Highway Administration INFRA Grant

Argo Connections (B9) and portions of 75th Street Corridor Improvement Project (P3, GS19)

\$132 Million
June 2018

Federal Railroad Administration CRISI Grant

Dolton Junction Interlocking Upgrade (WA11)

\$19 Million
June 2019

Federal Railroad Administration CRISI Grant

Pullman Junction Stage A (EW3a)

\$13 Million
March 2020

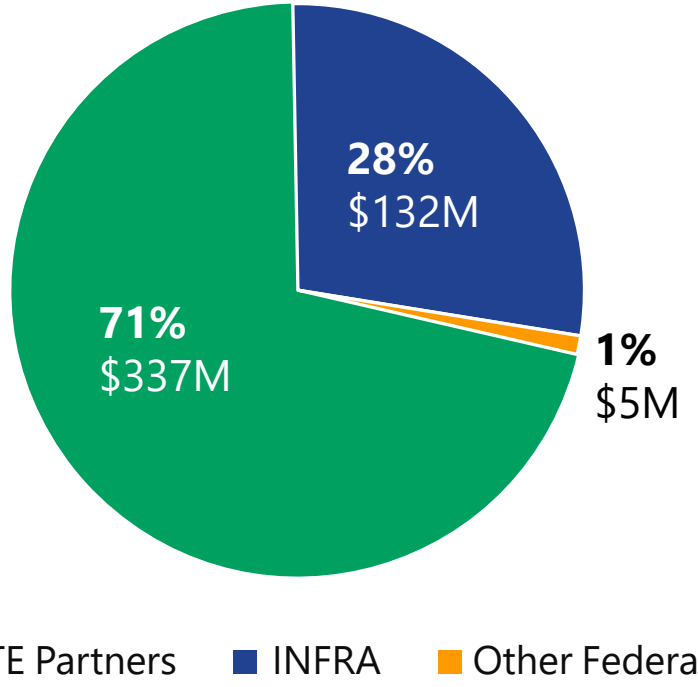


75th St. CIP Details and Status

2018 INFRA Grant Award – 75th St. CIP

The **\$132 million** federal Infrastructure for Rebuilding America (INFRA) Grant closed a funding gap to push the next phase of this project toward the finish line

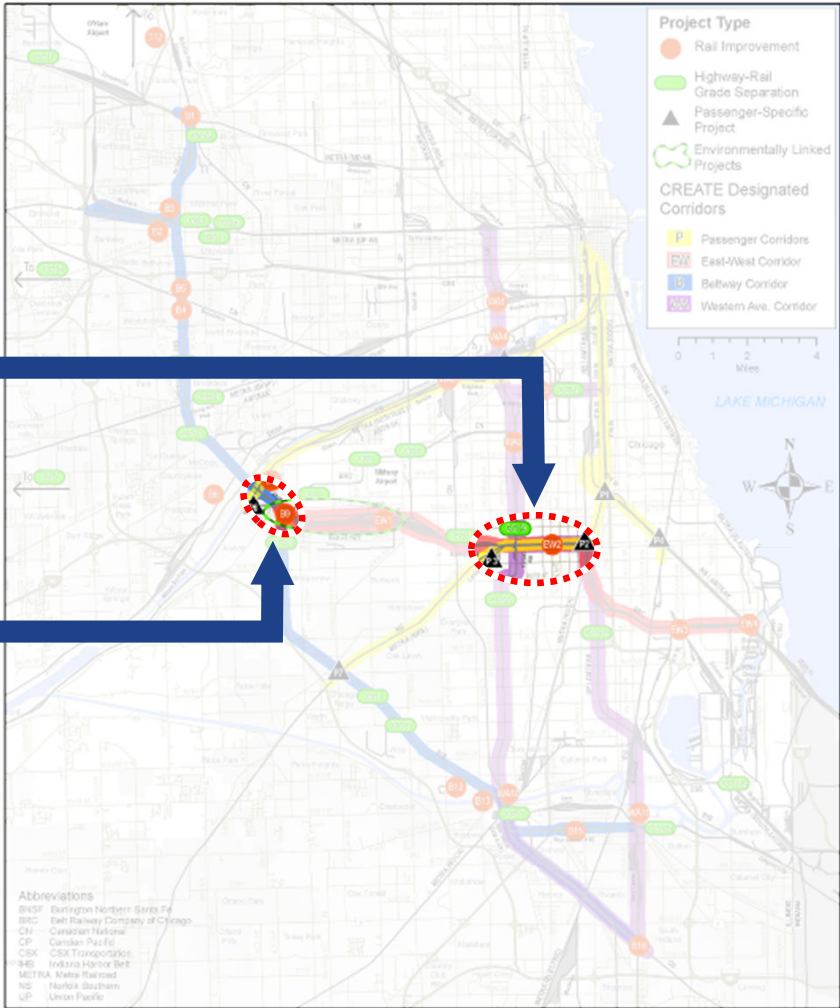
A total of **\$474 million** in funding will design the entire 75th St. CIP (P3, GS19, P2, EW2), construct two 75th St. CIP projects (P3, GS19) and construct the Argo Connections (B9)



2018 INFRA Grant Award – 75th St. CIP

75th St. CIP
(design and partial construction)

Argo Connections
(construction)



Argo Connections Project (B9)







Improvements benefit Amtrak, BRC, CN, CSX, IHB, Metra railroads

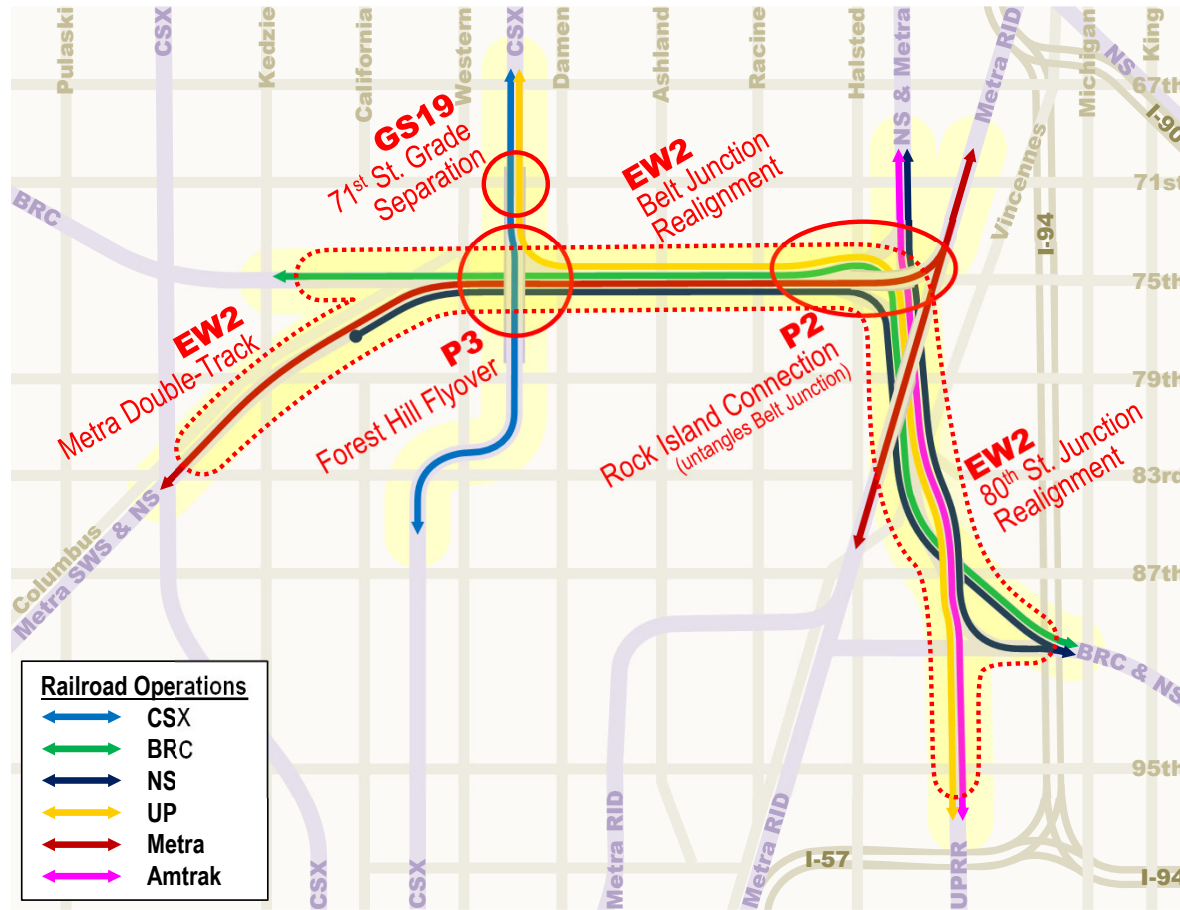
- Constructing a new double track connection and crossovers between the BRC and IHB/CSX line at Archer Ave. and 63rd St. in Summit, IL.
- Upgrading mainline crossovers to accommodate higher speeds, from 10 mph to 25 mph
- Improving Argo Yard
- Groundbreaking April 2019



B9 Groundbreaking – April 26, 2019

75th Street Corridor Improvement Project (CIP)

- P3**   Design Construction
- GS19**   Design Construction
- P2**  Design
- EW2**  Design



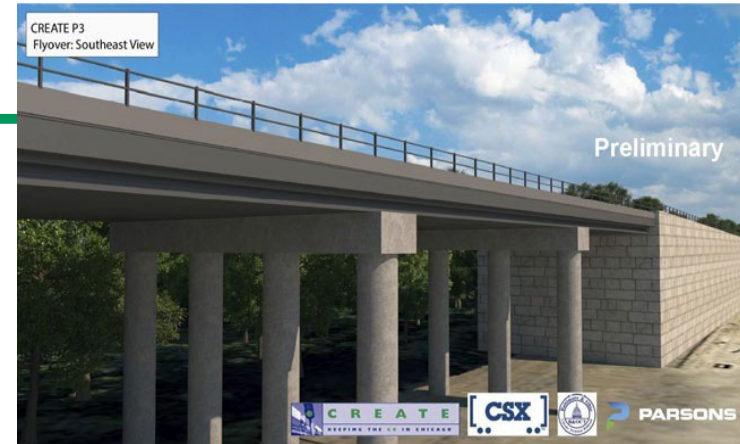
The CREATE partners will seek future funding to undertake construction of P2 and EW2.



Forest Hill Flyover (P3)

Construction

- **Advertise and Award:** Fall 2021*
- **Scope:** Permanent Structure, Track and Signal Construction
- **Construction Completion:** Winter 2024*

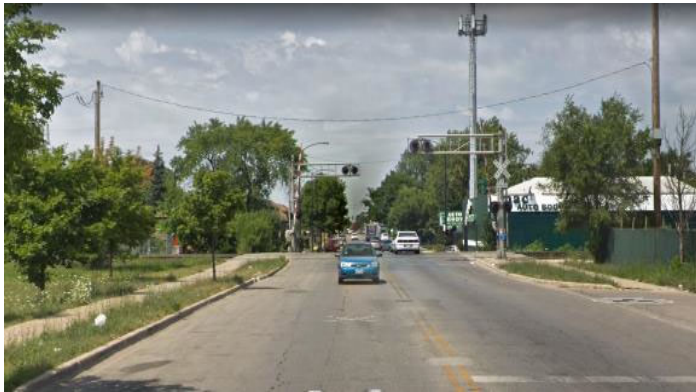


**subject to change*

71st St. Grade Separation (GS19)

Construction

- **Advertise and Award:** Fall 2021*
- **Scope:** Grade Separation, Track and Signal Construction
- **Construction Completion:** Winter 2024*





75th St. CIP Community Benefits

75th St. CIP Transportation and Environmental Benefits

- Congestion reduction
- Air quality and energy improvements
- Viaduct improvement program
- Community mobility improvements
 - Street, sidewalk and bus stop improvements



Viaduct Improvement Program – *Chicago*

- Locations in the City of Chicago
- Improved roadways, sidewalks and drainage under railroad viaducts
- Enhanced safety and security for motorists, pedestrians and bicyclists
- 62 locations completed to date

**Example:
1530 S Racine Avenue**



**Example:
1530 S Loomis Street**



75th St. CIP – Community Benefits

National Model for Community Partnership

• Education

- Grants to science & engineering programs
- CREATE in the Classroom
- CREATE in the Community
- CREATE in the Lab
- Junior Mentor Protégé Internships

• Local Jobs and Workforce Development

- Fund On-the-Job Training (\$15/hour) through Dawson Technical Institute and the IDOT Highway Construction Careers Training Program (HCCTP)
- Workforce development programs and partnerships

• Contracting

- Robust Disadvantaged Business Enterprise (DBE) participation goals and business-to-business networking sessions





Projects in Motion

Dolton Junction Interlocking (WA11)

Dolton and Riverdale

- 5 major railroads (CN, CSX, IHB, NS, UP) meet at Dolton Junction
- 3 active rail yards feed into the junction
- Outdated interlocking– both in design and technology
- Bottleneck delays freight trains, Amtrak service, motorists and pedestrians



Dolton Junction Interlocking (WA11)

Proposed Improvements

- Upgrade and reconfigure CSX/IHB/UP connections at Dolton Interlocking
- Construct a third main line with direct access from CSX and Barr Yard to the UP mainline
- Build crossovers between two mainline IHB tracks
- Increase freight train speeds for multiple routes from 15 mph to 30 mph
- Reduce delay for Amtrak, motorists and pedestrians
- Promote better air quality

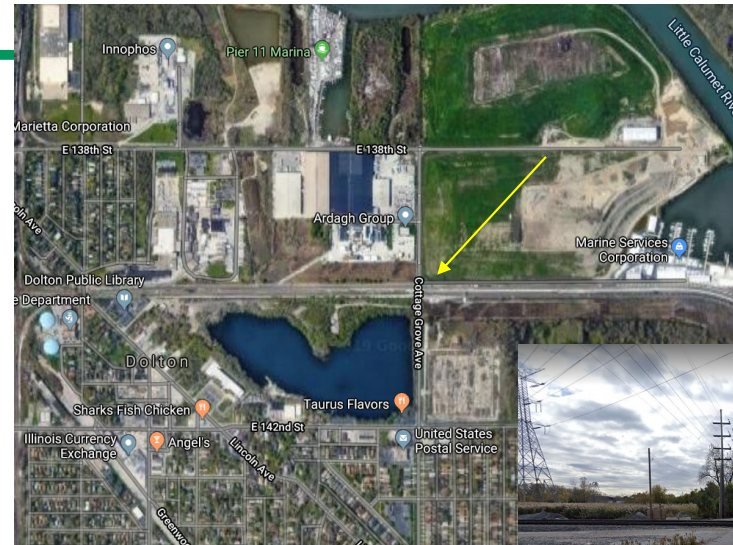
STATUS

- **In final design**
- **Construction 2022**
- **Construction completion: early 2024**
- **Partial Grant Funding \$19 million**
- **Total Project Cost : \$40 million**

- **2018 IIC Project award for land acquisition (\$600,000)**
- **\$300,000 Cook County assistance to Dolton for municipal utility relocation**

Cottage Grove Grade Separation (GS23A) Dolton

- Grade separating Cottage Grove Avenue and the IHB and CSX rail tracks from 138th Street to 142nd Street
- Eliminate delay to approximately 1,300 vehicles daily, resulting in alleviation of over 26,000 annual motorist hours of delay
- Reduce roadway congestion, improve safety, eliminate the potential for collisions between vehicles and trains

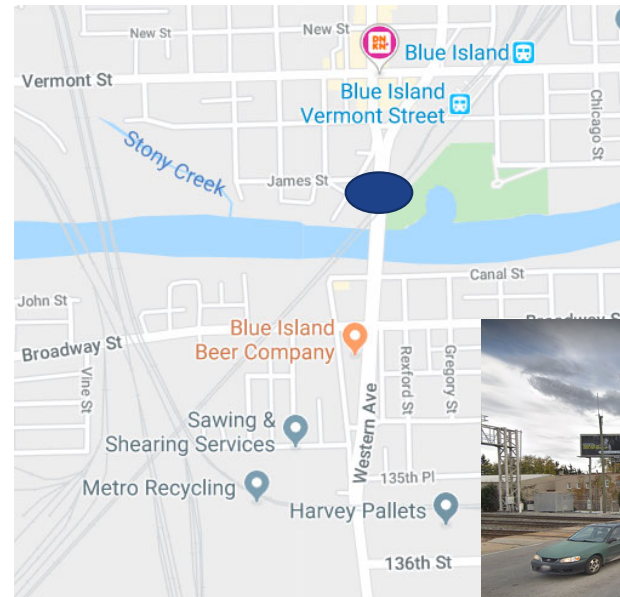


STATUS

- **Received \$2 million CMAQ grant for Preliminary Engineering**
- **County advertisement for services late 2021, award summer 2022**

Western Avenue Grade Separation (GS17) Blue Island

- Grade separating Western Avenue and 3 CSX tracks between 135th Street & 136th Street
- Eliminate delay to over 1,500 vehicles daily, resulting in alleviation of over 33,700 annual motorist hours of delay
- Reduce roadway congestion, improve safety, eliminate the potential for collisions between vehicles and trains



STATUS

- **Cook County request for \$4.5 million to advance preliminary engineering being vetted through House T&I Committee (Rep. Rush submission)**
- **Priority location in CC Freight Plan**

Harlem Avenue at BNSF Grade Separation (GS18) Berwyn, Riverside



Harlem Avenue near 33rd Street

- Evaluate alternatives for Grade crossing separating Harlem Avenue and 2 BNSF tracks between 32nd Street & 35th Street
- Eliminate delay to over 5,000 vehicles daily, resulting in alleviation of over 29,700 annual motorist hours of delay
- Reduce roadway congestion, improve safety, eliminate the potential for collisions between vehicles and trains (40 freight trains, 94 Metra trains, 6 Amtrak trains) and 14 Pace Buses

STATUS

- **Priority location in CC Freight Plan**
- **CMAP led planning study - Completion late 2021**

31st Street at Illinois Harbor Belt Grade Separation (GS13) LaGrange Park



31st Street west of Kenman Avenue

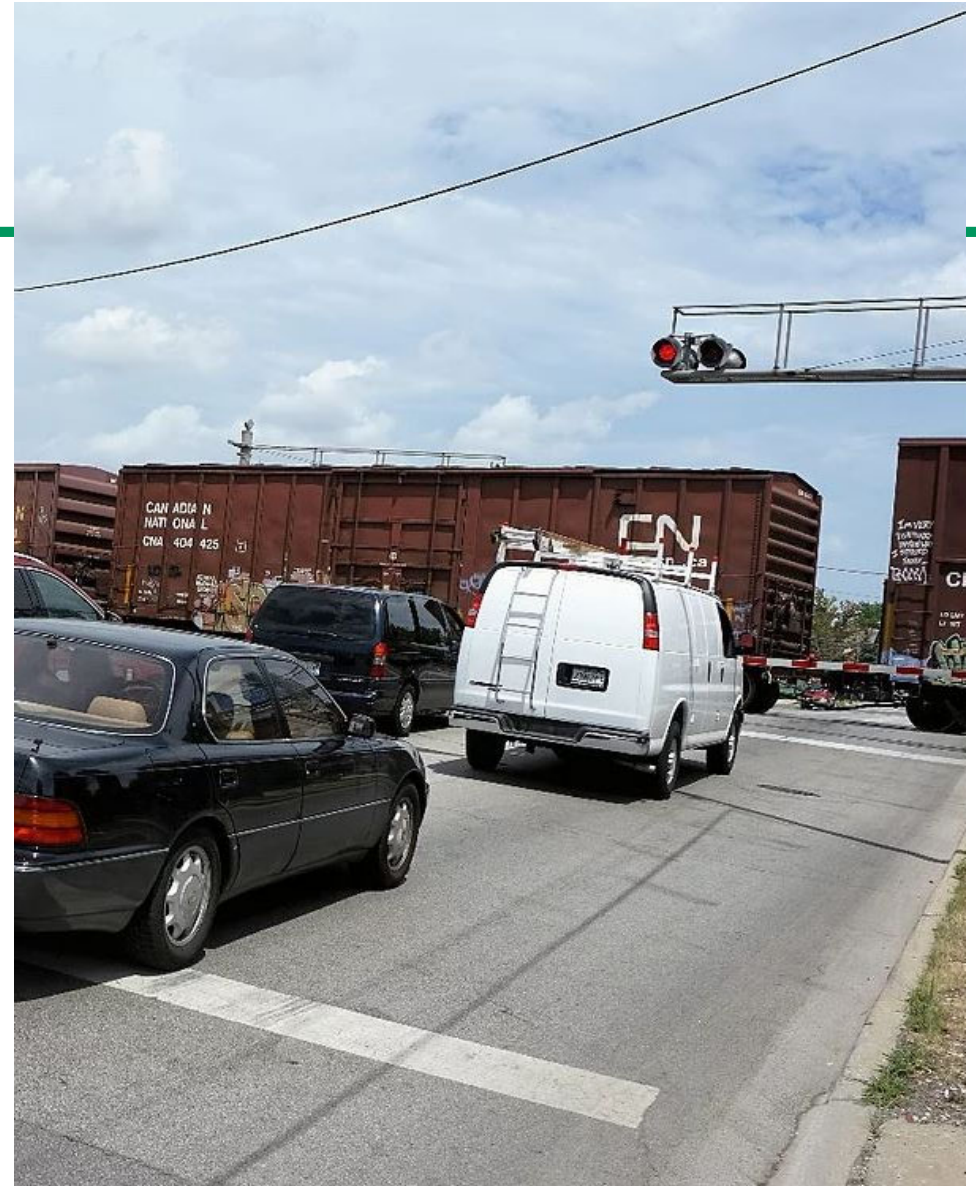
- Advance Feasibility study to determine infrastructure project options to mitigate congestion created by existing at grade crossing.
- Eliminate delay to over 2,100 vehicles daily, resulting in alleviation of over 16,000 annual motorist hours of delay
- Reduce roadway congestion, improve safety, eliminate the potential for collisions between vehicles and trains (76 daily freight trains)

STATUS

- **Priority location in CC Freight Plan**
- **Cook County request for \$400,000 to advance a feasibility study is being vetted through House T&I Committee (Rep. Garcia submission)**

Archer Avenue & Belt Railway of Chicago Grade Separation (GS9) - *Chicago*

- Road underpass to eliminate at-grade crossing of Archer Avenue and BRC tracks
- Minimize car, truck, and train idling, which reduces fuel consumption and improves air quality
- Alleviate nearly 59,600 motorist hours of delay per year
- "911 Critical Crossing"
- Phase I completion: Q2 2021
- 2021 INFRA Grant Application for Phases II and III (Design and Construction)
- CC Freight Plan Priority





Showcase Projects

Belmont Road at Metra/BNSF (GS7) – *Downers Grove*

- Road underpass eliminated the at-grade crossing of the BNSF tracks at Belmont Road
- Metra and Amtrak also operate on these tracks
- A pedestrian tunnel was constructed as part of this improvement
- Completed 2012



71st Street Grade Separation (GS14) – *Bridgeview*

- Road underpass built to separate 71st Street and the IHB/CSX tracks just west of Harlem Avenue
- Completed 2013



Before (2011)



After (2013)

Englewood Flyover (P1) – *Chicago*

- Improvements benefit Metra, NS, and Amtrak
 - Removed conflict point between commuter, passenger, and freight trains
 - Alleviated Amtrak's most severe delay point in the Midwest
- Completed 2014



130th Street and Torrence Avenue (GS15a) – Chicago

- Eliminated the at-grade crossings of the two Norfolk Southern main tracks at 130th Street and Torrence Avenue
- Eliminated conflict between railroad and Ford Plant access
- Improved Ford Plant site logistics
- Road underpass constructed
- Completed 2015



25th Avenue and Union Pacific (GS6) – *Melrose Park*

- Created an overpass for vehicles using 25th Avenue
- Completed 2016



Next Steps

- Briefings and Tours
- Execute 75th St. CIP INFRA and CRISI Grant-Awarded Projects
 - Dolton Junction Interlocking Upgrade (WA11) – 2019 CRISI Grant
 - Pullman Junction Stage A (EW3A) – 2020 CRISI Grant
- Pursue Federal Funding (Grants, Earmarks, Stimulus) for Priority Projects
 - Archer Avenue & BRC Grade Separation (GS9) – 2021 INFRA Grant
 - Second half of 75th St. CIP – 2022 INFRA



Rep. Marie Newman
CREATE Tour – Feb 2021



Stay in Touch!

E-mail: info@createprogram.org

Website: createprogram.org



Like us on Facebook
[@CREATEProgramChicago](https://www.facebook.com/CREATEProgramChicago)



Follow us on Twitter
[@CREATE_Chicago](https://twitter.com/CREATE_Chicago)

