

Quarterly COVID-19 and Infectious Diseases Update

**Cook County Board Health & Hospitals
Committee Meeting
January 23, 2024**

Presenter:

- **LaMar Hasbrouck, MD, MPH, MBA – COO Cook County Department of Public Health**



Cook County DEPT. of
Public Health



COOK COUNTY
HEALTH



COVID-19



COOK COUNTY
HEALTH

COVID-19

Data for week ending 1/6/24

- COVID-19 activity is currently **low**, although our region is approaching the threshold for ‘moderate’ activity
- Deaths, hospitalizations and emergency department visits have **increased** since last report
- Total cases: 728,846
- Deaths: 7,412

For the week ending Jan 06, 2024.*

Low

Activity Level for COVID-19

3.32%

Percent of ED Visits with COVID-19

8

Hospital Admissions per 100,000

2.3%

Percent of Deaths Associated with COVID-19



COOK COUNTY
HEALTH

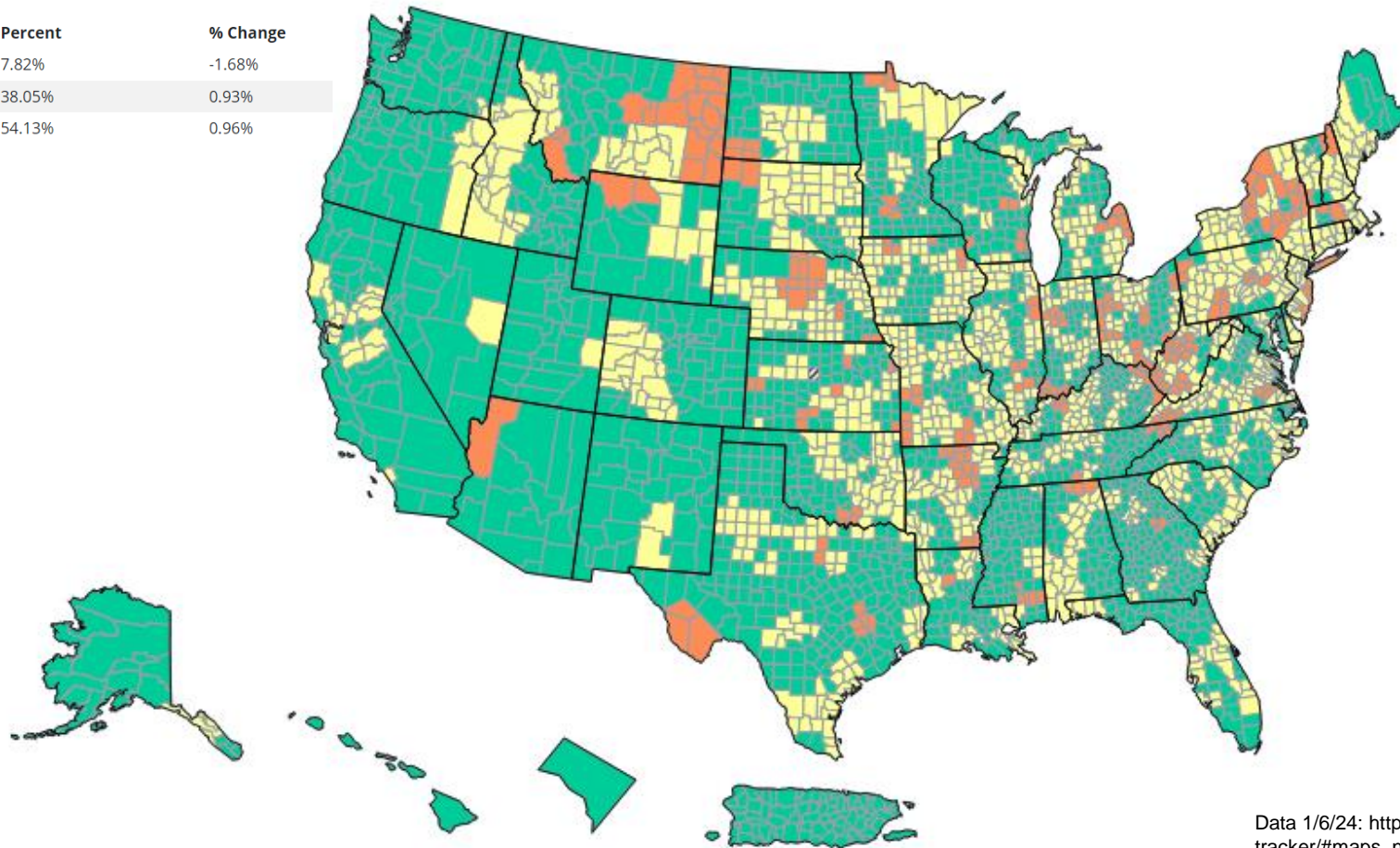


Cook County
DEPT
of
Public Health

US Data – Hospital admissions

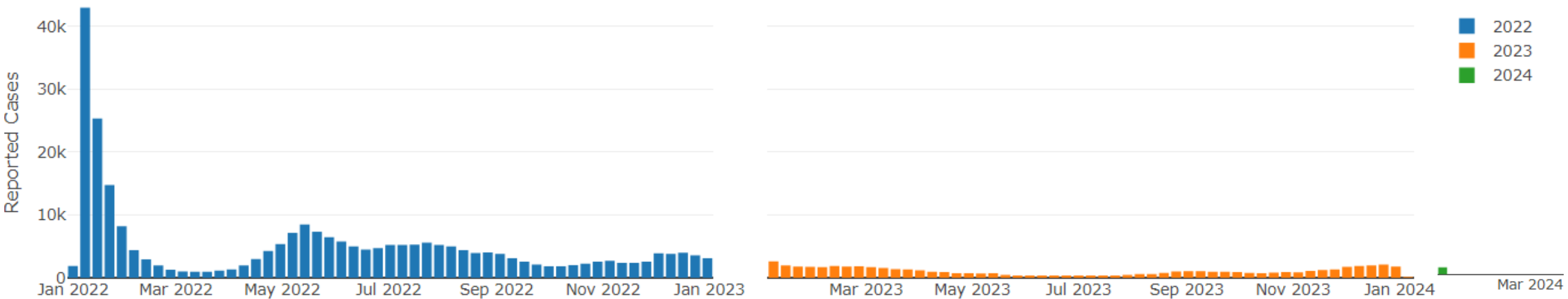
Reported COVID-19 New Hospital Admissions Rate per 100,000 Population in the Past Week, by County

	Total	Percent	% Change
≥ 20.0	252	7.82%	-1.68%
10.0 - 19.9	1226	38.05%	0.93%
<10.0	1744	54.13%	0.96%



COVID-19 Weekly Case Counts

Data for week ending 1/6/24



Data 1/6/24:
<https://ccdphcd.shinyapps.io/covid19/>



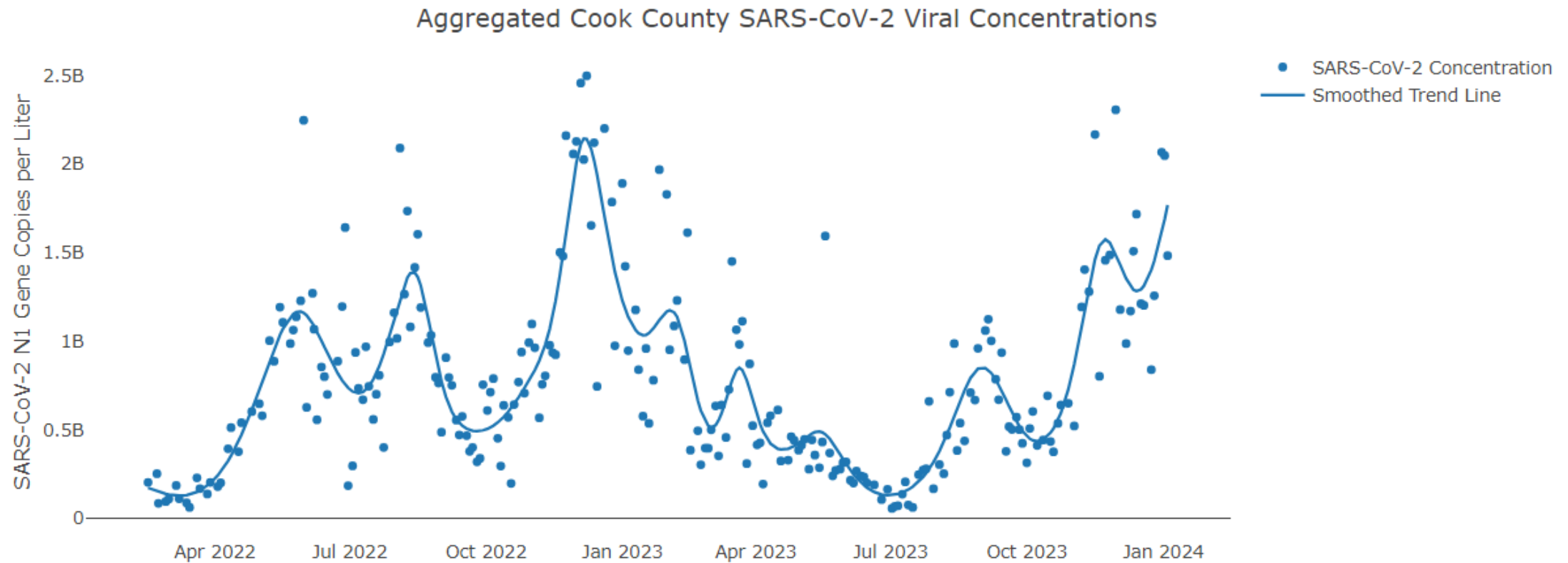
COOK COUNTY
HEALTH



Cook County ^{DEPT}
Public Health

Wastewater surveillance

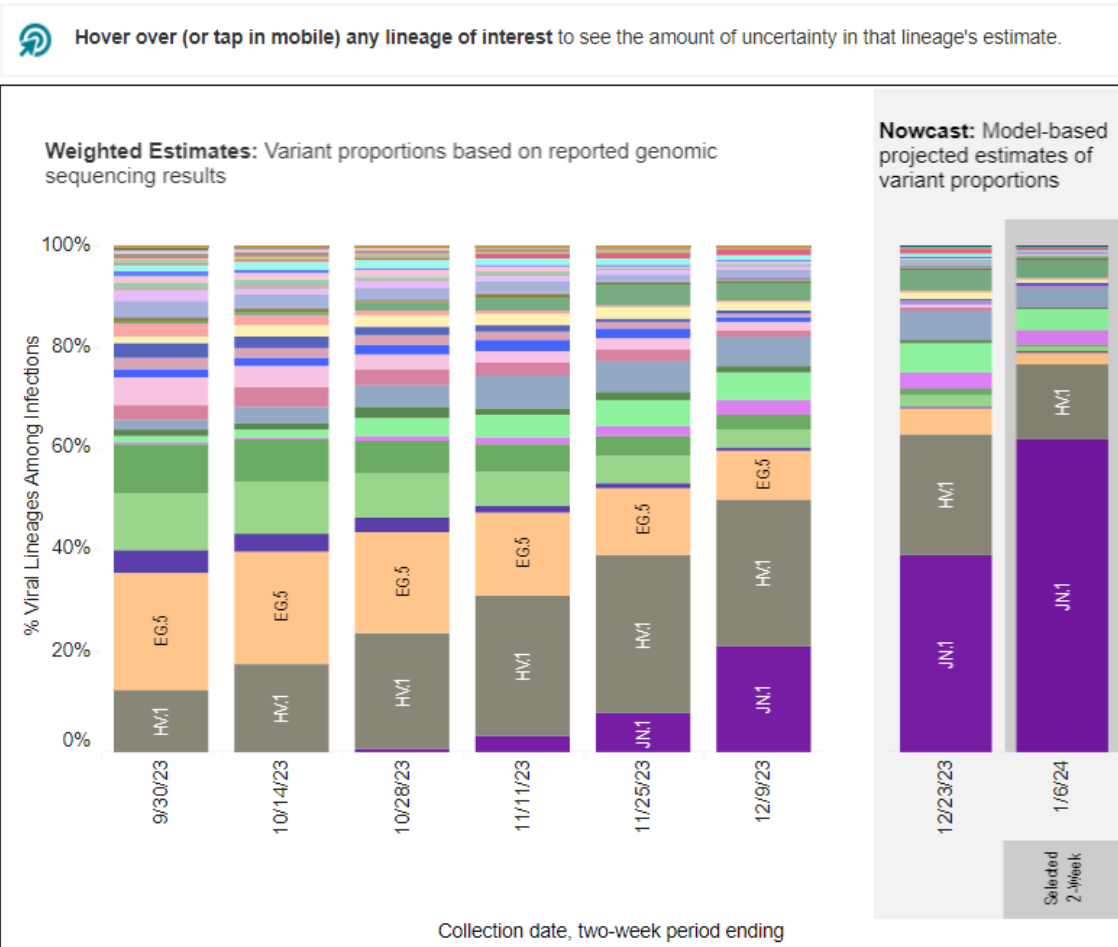
Wastewater concentrations continue to **increase**



Important Updates – COVID-19 Variants

Sequencing results – national data

Weighted and Nowcast Estimates in United States for 2-Week Periods in 9/17/2023 – 1/6/2024



Nowcast Estimates in United States for 12/24/2023 – 1/6/2024

USA

WHO label	Lineage #	%Total	95%PI
Omicron	JN.1	61.6%	54.9-67.9%
	HV.1	14.8%	12.3-17.7%
	JD.1.1	4.1%	3.4-5.0%
	HK.3	4.0%	3.4-4.8%
	JG.3	3.7%	3.0-4.6%
	BA.2.86	2.8%	1.9-4.2%
	EG.5	2.4%	1.9-3.0%
	FL.1.5.1	1.0%	0.7-1.3%
	JF.1	0.8%	0.6-1.1%
	EG.5.1.8	0.7%	0.5-1.1%
	XBB.1.16.6	0.5%	0.4-0.8%
	GE.1	0.5%	0.1-1.9%
	XBB.1.16.17	0.4%	0.2-0.9%
	XBB.1.16.11	0.4%	0.2-0.5%
	XBB.1.5.70	0.3%	0.2-0.6%
	GK.1.1	0.3%	0.2-0.4%
	HF.1	0.3%	0.2-0.4%
	BA.2	0.3%	0.1-0.9%
	XBB	0.2%	0.1-0.3%
	XBB.1.16.15	0.2%	0.1-0.3%
	XBB.1.9.1	0.2%	0.1-0.3%
	XBB.2.3	0.2%	0.1-0.2%
	XBB.1.16	0.1%	0.0-0.1%
	GK.2	0.1%	0.0-0.1%
	CH.1.1	0.0%	0.0-0.1%
	XBB.1.5	0.0%	0.0-0.1%
	EG.6.1	0.0%	0.0-0.1%
	XBB.1.16.1	0.0%	0.0-0.0%
	XBB.1.9.2	0.0%	0.0-0.0%
	XBB.1.5.68	0.0%	0.0-0.0%
	XBB.2.3.8	0.0%	0.0-0.0%
	XBB.1.42.2	0.0%	0.0-0.0%
	XBB.1.5.72	0.0%	0.0-0.0%
	XBB.1.5.59	0.0%	0.0-0.0%
	XBB.1.5.10	0.0%	0.0-0.0%
	FD.1.1	0.0%	0.0-0.0%
Other	Other*	0.0%	0.0-0.1%



* Enumerated lineages: # While all lineages are included in this graphic at <https://www.pango.net>

included in at least one 2-week period. "Other" represents the aggregation of lineages which are circulating <1% nationally during all 2-week periods displayed. Detailed in this graphic are aggregated with their parent lineages, based on Pango lineage definitions, described in more detail here: <https://pango.net/lineage-definitions/>

Important Updates – Vaccine Efficacy

- Data indicates COVID-19 vaccines continue to be effective
- Studies have shown:
 - 70% effective against hospitalization (seniors)
 - 73% effective against severe disease among adolescents
 - Additional protection against
 - emergency department use,
 - outpatient use, and
 - hospitalization
 - Each vaccine received lessens the chance of long COVID

Vaccine effectiveness against long Covid

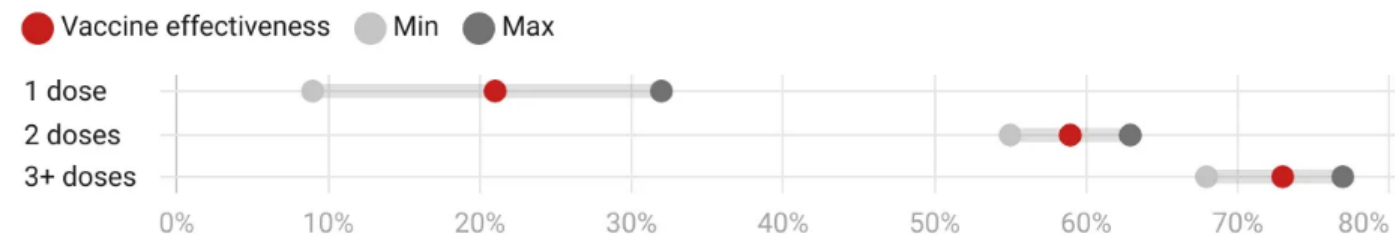


Chart: YLE/KKJ • Source: BMJ 2023;383:e076990 • Created with Datawrapper

Flu and RSV



Flu - Suburban Cook County

For the week ending Jan 06, 2024:*

Moderate

Activity Level for Influenza

- Influenza activity level has **increased to moderate**
- Flu levels remain elevated compared to what they were last year at this time
- Flu-related ICU admission rates are the highest among children under five, adults over 65, and non-Hispanic Black residents
- RSV remains elevated, especially in children under 5, but activity has likely peaked for the season.
- Wastewater detections for influenza and COVID-19 continue to trend up

3.6%

Percent of ED Visits with Flu



10.1%

Percent of Lab Tests Positive for Flu



10

Number of ICU Admissions for Flu



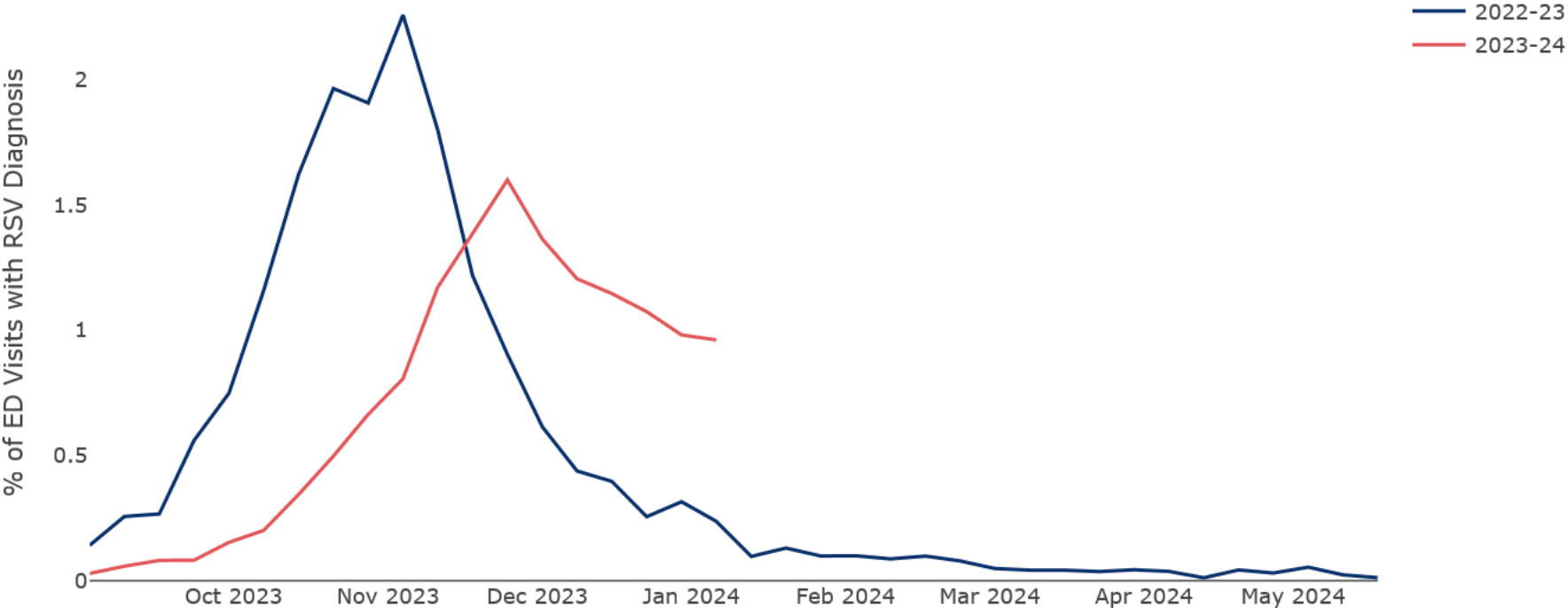
COOK COUNTY
HEALTH



Cook County DEPT
of
Public Health

RSV

% of ED visits with RSV has been decreasing since late December



Measles

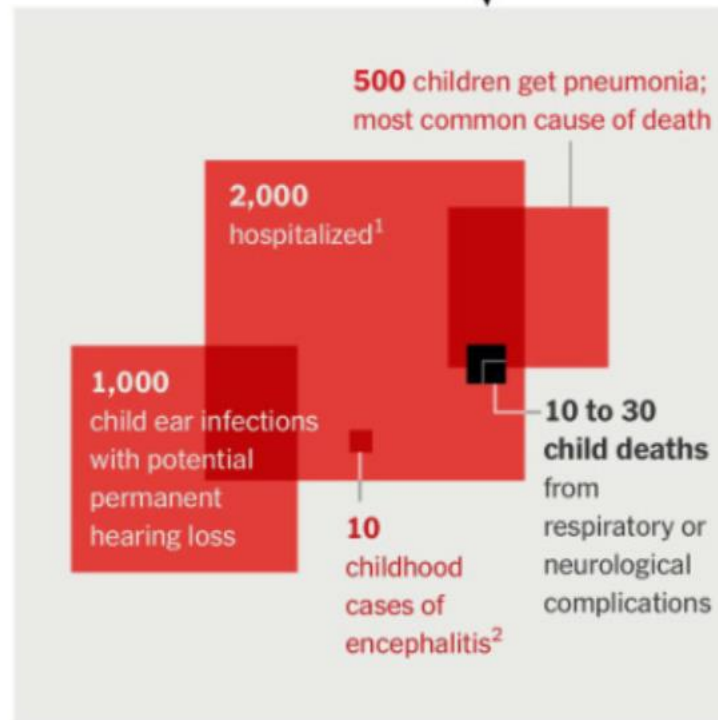


COOK COUNTY
HEALTH

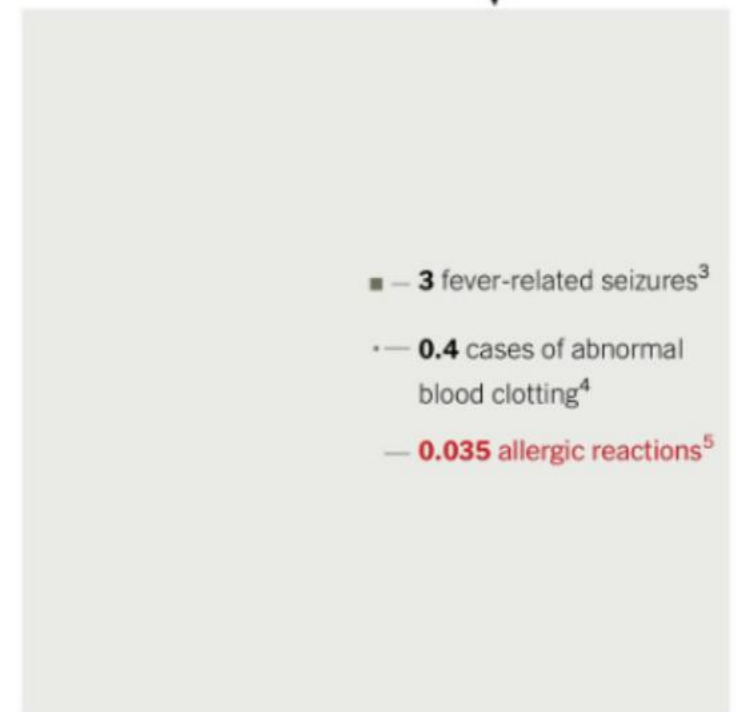
Measles – Importance of vaccination

- IL measles outbreak – Cook County, October 2023
- Cases = 5 individuals, all linked; all were unvaccinated
- NO additional cases in IL
- Current outbreaks in PA, NJ
- Importance of vaccination
 - Message: Vaccines are safe. Measles is not.

Effects per 10,000 people who get **measles**



Effects per 10,000 people who get the **M.M.R. vaccine**



Thank you



Cook County DEPT. of
Public Health



COOK COUNTY
HEALTH