

#21-4332

Behavioral Health Services Report Q1 2021 (March-May)

Cook County Health & Hospitals Committee Meeting
September 20, 2021

Cook County Health
Cook County Department of Public Health (CCDPH)

Dr. Kiran Joshi, MD, MPH – Senior Medical Officer & Co-Lead



Cook County DEPT.
of
Public Health

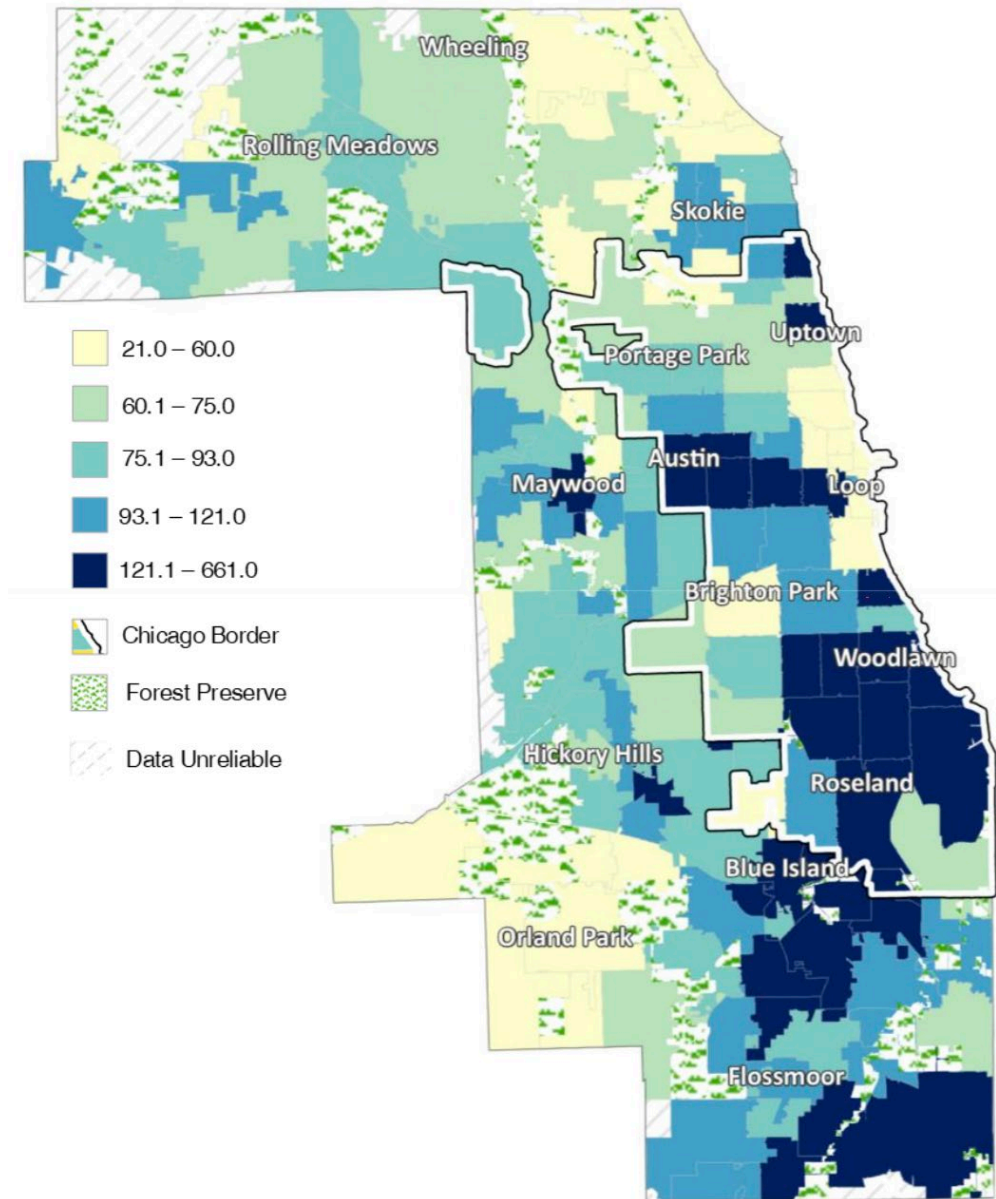


COOK COUNTY
HEALTH

A fragmented system of prevention and care = crises response

Mental Health ED Visits, Adults

(rate per 10,000, age-adjusted)



Source: Alliance for Health Equity, 2019



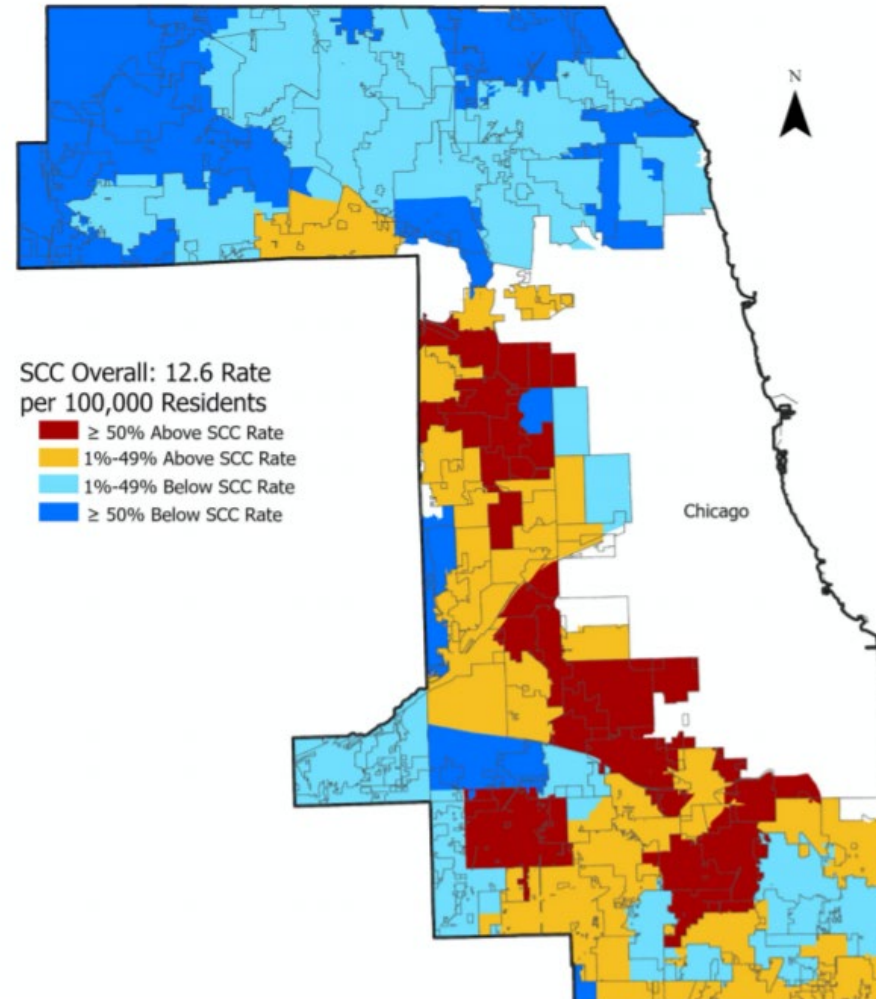
COOK COUNTY
HEALTH



Cook County DEPT.
of
Public Health
Promoting health. Preventing disease. Protecting you.

Opioid overdose rates are highest in areas with lower median household incomes and higher poverty rates

- CCDPH analysis also shows that middle-aged Black/African-American men are the demographic group with the largest increase in opioid overdose deaths in suburban Cook County



CCDPH Behavioral Health

Our role



- Meet urgent needs
- Advance systems change
- Convene and coordinate with suburban partners
- Conduct data analysis and share results with stakeholders
- Secure resources for suburban initiatives



COOK COUNTY
HEALTH



Cook County DEPT.
of
Public Health
Promoting health. Preventing disease. Protecting you.

CCDPH Response

Current Work

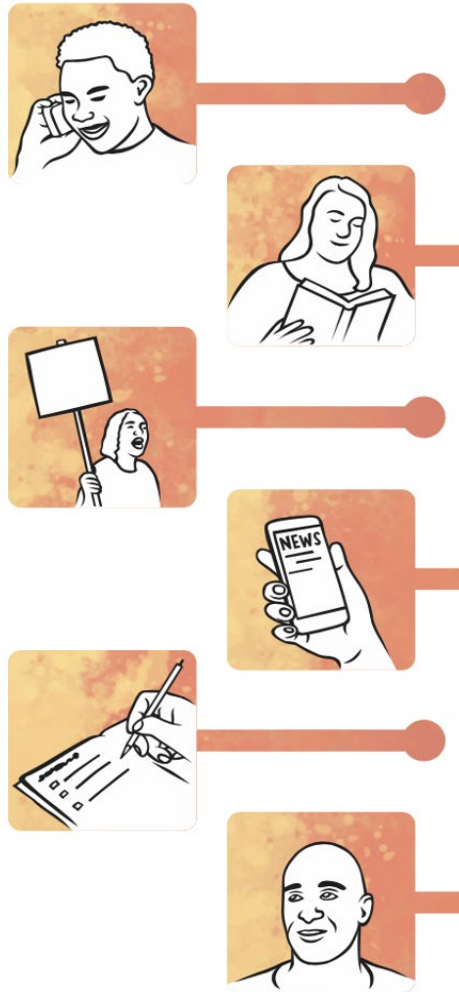


Law enforcement officers in Harvey watching the naloxone training video

- CCDPH secured **four grants to prevent opioid overdose deaths** and increase access to evidence-based substance use treatment programs.
- CCDPH's opioid overdose prevention initiative has four components:
 1. Training on opioid overdose and naloxone
 2. Distribution of naloxone
 3. Deflection protocols and programs
 4. Quantitative and qualitative data collection
- Expand NAMI Chicago's hotline to include suburban treatment centers and social services
- Facilitate CCH Trauma-Informed Task Force



CCDPH Response



Future

- Continue opioid and trauma-informed care initiatives
- Work with partners to respond to needs exacerbated by COVID-19, especially for the most vulnerable
 - Essential workers more likely to report suicidal thoughts
 - Essential worker more likely to start or increase substance use
 - People with opioid use disorder were 10 times more likely to die from COVID-19.
- Work internally to identify staff needs related to mental health
- Work with internal and external partners to identify areas of collaboration and to secure additional resources

