

PROVIDING REFUGE FOR AFGHANS

Jims Porter
RefugeeOne





Our Mission

Create opportunity for refugees fleeing war, terror, and persecution to build new lives of safety, dignity, and self-reliance.

refugeeONE

WHY DO PEOPLE LEAVE THEIR HOME?

They choose to:

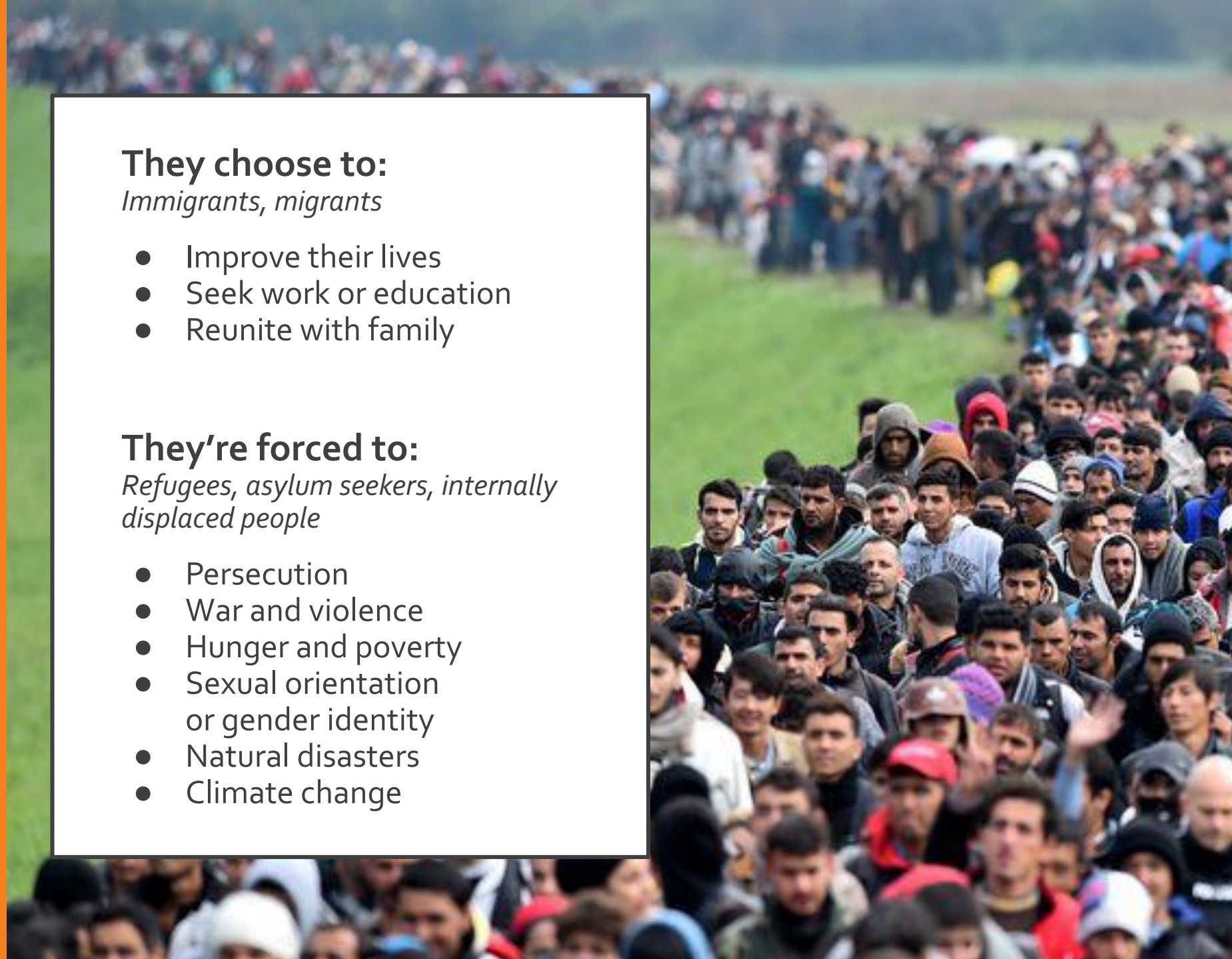
Immigrants, migrants

- Improve their lives
- Seek work or education
- Reunite with family

They're forced to:

Refugees, asylum seekers, internally displaced people

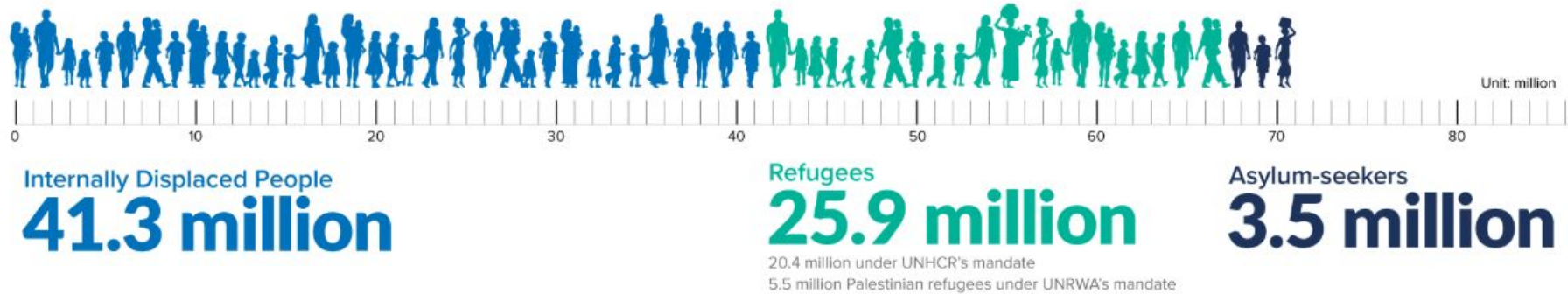
- Persecution
- War and violence
- Hunger and poverty
- Sexual orientation or gender identity
- Natural disasters
- Climate change



BY THE NUMBERS:

A GLOBAL HUMANITARIAN DISPLACEMENT CRISIS

70.8 million forcibly displaced people worldwide

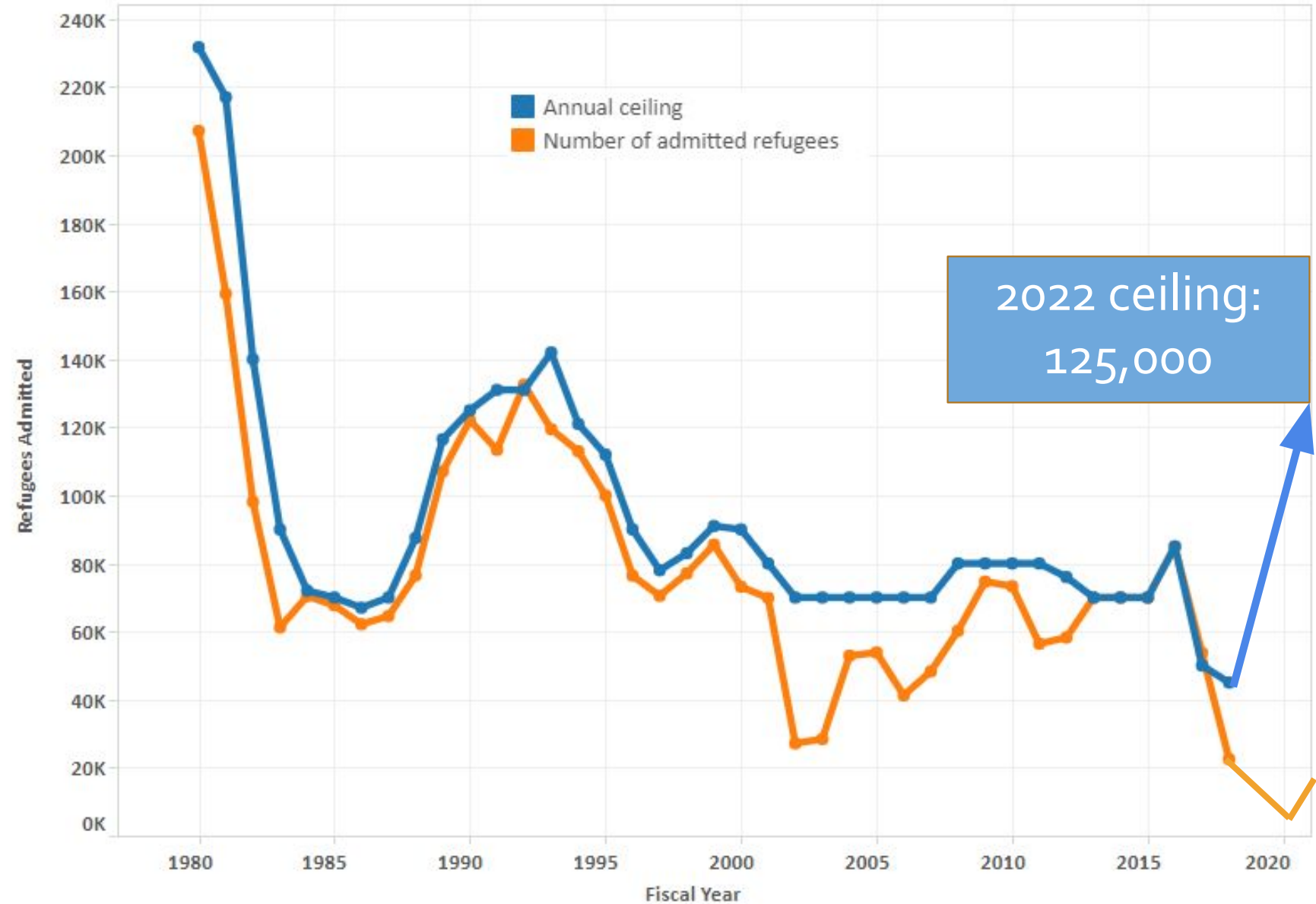


We're currently witnessing the highest levels of displacement on record.

- Every day, 37,000 people are forcibly displaced as a result of conflict and persecution.
- Across the globe, 1 in every 100 people have been driven from their homes.

HISTORY OF REFUGEE ADMISSIONS TO THE U.S.

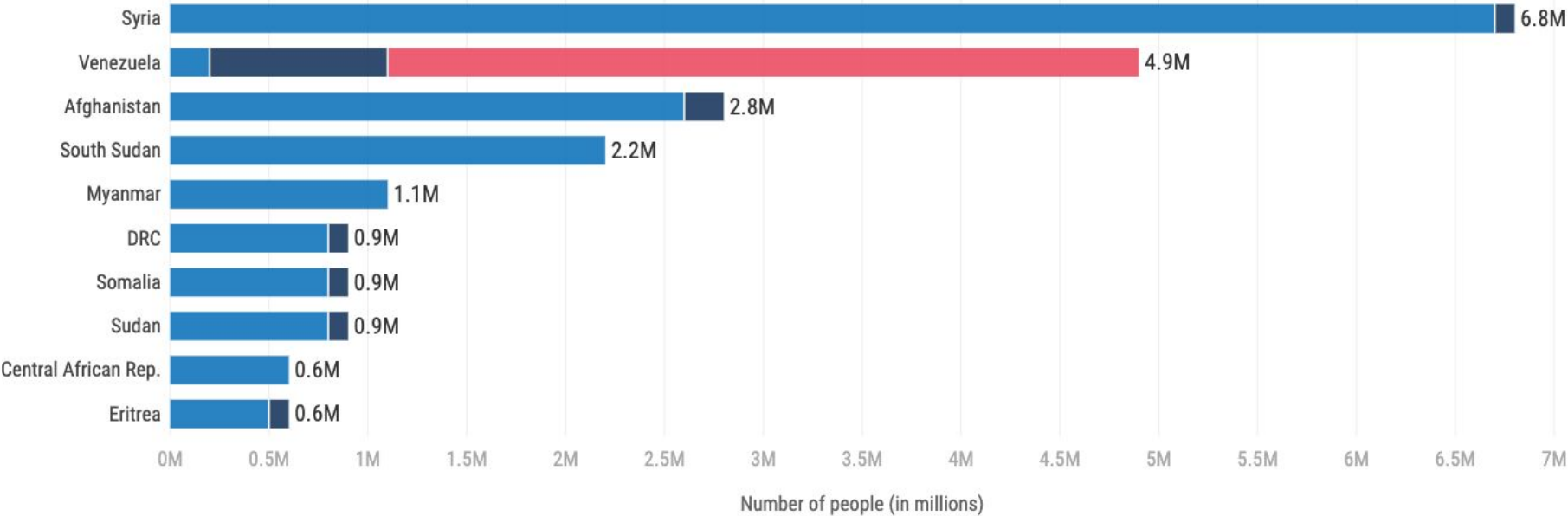
U.S. Refugee Admissions and Refugee Resettlement Ceilings, Fiscal Years 1980-2018



**Where are refugees
coming from?**



INTERNATIONAL
DISPLACEMENT
BY COUNTRY OF ORIGIN



AFGHANISTAN



- U.S. evacuated 130K Afghans by 8/31
- Most currently at 8 domestic military bases
- Resettlement agencies like RefugeeOne are already welcoming them

WHAT LEGAL STATUS DO AFGHANS HAVE?

	Refugees and SIVs	SQ/SI Parolees	All Other Parolees
Immigration status conferred	SIVs immediately receive a green card; refugees are eligible after one year. Both groups can apply for citizenship after five years.	Receive a green card if the SIV application is approved; could then apply for citizenship after five years.	No path to a green card unless they can establish another basis, such as qualifying for asylum.
Reception and Placement Services	Yes	Yes	Afghan Parolee Support Program is intended to be substantial equivalent.
ORR Social Services	Yes	Yes	No
ORR-funded Cash and Medical Assistance	Yes	Yes	No
Supplemental Nutritional Assistance Program (SNAP)	Yes	Yes	Only children are eligible.
Medicaid	Yes	Yes	Only for pregnant women and children and youth under 21 at state's option.
Temporary Assistance for Needy Families (TANF) and Supplemental Security Income (SSI)	Yes	Yes	No
Child Care	Yes	Yes	Yes
Head Start; Early Head Start; Maternal, Infant, and Early Childhood Home Visiting Program (MIECHV); Special Supplemental Nutrition Program for Women, Infants, and Children (WIC)	Yes	Yes	Yes
Workforce services under <i>Workforce Innovation and Opportunity Act</i>	Yes	Yes	Yes for Title I services if individual is work authorized Yes for Title II services whether or not work authorized, unless restricted by state.

WHAT SOLUTIONS EXIST?



1. Return home
2. Remain in country of refuge
3. Resettlement

COMING TO
THE U.S.



WELCOME

TO

CHICAGO

REFUGEEONE
EST. 1982

RefugeeOne has resettled more than 18,000 refugees since 1982.



95% of refugee clients
are self-reliant within 12
months



1,000+ volunteers
helping refugees
succeed



150 local businesses
proudly hire and
employ our clients



Our staff members
collectively speak 35
languages

**What support do
refugees need?**





What support do refugees need?

- Safe, affordable housing
- English classes
- Employment support
- Healthcare, including mental healthcare
- Youth services & academic support
- Immigration assistance
- Friendship and social connections
- And help navigating *everything* from:
 - Learning public transportation
 - Paying rent and managing finances
 - Navigating new school and healthcare systems
 - And more!

LOOKING AHEAD

- In the next year, we're expecting to welcome about 3,000 refugees in Illinois.
 - About half will be from Afghanistan
 - Most will make their home in Cook County