

# CCH/CCDPH COVID-19 Vaccination Program & Contact Tracing Update



## Cook County Board Health & Hospitals Committee Meeting March 15, 2022

### Presenters:

- Israel Rocha, CEO Cook County Health
- Kiran Joshi, MD, MPH, Senior Medical Officer & Co-Lead, Cook County Department of Public Health
- Rachel Rubin, MD, MPH, Senior Medical Officer & Co-Lead, Cook County Department of Public Health



Cook County DEPT. of  
Public Health



COOK COUNTY  
**HEALTH**

# CCH Community Vaccination Program



Cook County DEPT. of  
Public Health



COOK COUNTY  
**HEALTH**

# COVID-19

## ***Important Updates – School Mask Mandate Temporary Restraining Order***

- Late last week, a downstate judge instituted a temporary restraining order (TRO) against the governor's order for mandatory masking for plaintiff students in several school districts around the state, including 21 in suburban Cook County and in Chicago.
- This ruling -- which applies only to the individuals in the complaint, not other students or employees in their school districts -- did not limit IDPH or local health departments from issuing orders within their jurisdiction.
- Guidance from IDPH will be forthcoming and we will share that as it becomes available.
- We are reviewing the TRO and potential options for suburban Cook County's mitigation efforts.



# COVID-19

## *Important Updates – Mass Vaccination Sites to Sunset*

- We encourage people to get their COVID-19 vaccine at one of Cook County Health's three large-scale community vaccination sites before they close.
  - Des Plaines 1155 E. Oakton Street, Des Plaines, IL
  - Forest Park 7630 W. Roosevelt Road, Forest Park, IL
  - Matteson 4647 Promenade Way, Matteson, IL
- The sites' last day of operation will be Sunday, February 13, 2022.
- This marks the conclusion of the sites' planned three-week run.
- Appointments can be made at [vaccine.cookcountyil.gov](https://vaccine.cookcountyil.gov) Walk-ins are also welcome.
- Vaccines will continue to be provided at Cook County Health hospitals and health centers.



COOK COUNTY  
**HEALTH**



Cook County DEPT.  
**Public Health**



# COVID-19

## *Important Updates – Gift Card & Mask Giveaway*

- Beginning on Wednesday, February 9 through Sunday, February 13, any person who gets a COVID-19 vaccine at a Cook County Health site will receive a \$100 Visa gift card, while supplies last.
- Cook County Health is committed to making getting vaccinated as simple as possible. It is not always easy for people to take time off work or find childcare in order to get vaccinated, or to lose a day of work if they experience side effects. Gift cards are being offered in part to reduce these barriers.
- This promotion is open to any person age 5+ who receives a first, second or booster shot. There is no limit to the number of gift cards a single household can receive.
- Appointments can be made at [vaccine.cookcountyil.gov](https://vaccine.cookcountyil.gov) and walk-ins are also welcome.
- Pfizer, Moderna, and Johnson & Johnson vaccines are offered at all sites. Individuals getting a second or booster shot must be within their window to receive a subsequent dose.
- CCH sites are also offering free KN95 masks regardless of vaccination status. Thanks to the Cook County Department of Emergency Management and Regional Security for supplying masks for distribution to community members.
- Visit [MyShotCookCounty.com/locations](https://MyShotCookCounty.com/locations) for a list of participating CCH locations.



**COOK COUNTY**  
**HEALTH**



Cook County DEPT.  
**Public Health**

# Shots in Arms

*as of February 6, 2022*

## Vaccine Administered (1<sup>st</sup> & 2<sup>nd</sup> doses) at CCH PODs

CCH Chicago PODs*	Total	CCH Suburban PODs**	Total
Austin Health Center	8,742	Arlington Heights Health Center	52,387
Belmont Cragin Health Center	11,470	Blue Island Health Center	19,391
Dr. Jorge Prieto Health Center	6,897	Cottage Grove Health Center	13,419
Englewood Health Center	7,898	North Riverside Health Center	40,896
Sengstacke Health Center	21,293	Robbins Health Center	13,441
Ruth M. Rothstein CORE Center	14,204		
Stroger Hospital	27,074		
<b>TOTAL</b>	<b>95,578</b>	<b>TOTAL</b>	<b>139,534</b>

\* Vaccine Distributed to CCH by the Chicago Department of Public Health.

\*\* Vaccine Distributed to CCH by the Cook County Department of Public Health



**COOK COUNTY**  
**HEALTH**



Cook County  
DEPT.  
of  
**Public Health**

# Shots in Arms

*as of February 6, 2022*

## Vaccine (1<sup>st</sup> & 2<sup>nd</sup> doses) Administered at Mega & Targeted PODs

Mega PODs	Total	Targeted PODs	Total
Tinley Park Convention Center <i>(closed 5/28)</i>	135,829	Thornton Fractional South HS <i>(concluded 6/5)</i>	23,982
Triton College <i>(closed 5/28)</i>	60,477	Morton East Health Center	24,559
South Suburban College <i>(closed 5/28)</i>	71,828	West Leyden <i>(concluded 6/11)</i>	5,568
Des Plaines <i>(reopened 1/22 – 2/13/22)</i>	187,572	Thornton Township HS <i>(concluded 6/26)</i>	716
Forest Park <i>(reopened 1/22 – 2/13/22)</i>	142,062	Summit Priority POD <i>(concluded 5/24)</i>	7,449
Matteson <i>(reopened 1/22 – 2/13/22)</i>	36,803		
<b>TOTAL</b>	<b>634,571</b>	<b>TOTAL</b>	<b>62,274</b>



**COOK COUNTY**  
**HEALTH**



Cook County DEPT.  
**Public Health**

# Shots in Arms

*as of February 6, 2022*

## Vaccine (1<sup>st</sup>, 2<sup>nd</sup> & 3<sup>rd</sup> doses) Administered to Specific Populations

Population	Total Doses (first, second & third)	Unique Individuals
Cook County Health Employees & Contractors	15,620	6,194
Dept. of Corrections and JTDC Employees & Contractors	4,642	2,382
Cermak Health Services Patients	19,906	10,275
Cook County Government Employees* <i>(excluding CCH)</i>	734	502
<b>TOTAL</b>	<b>40,902</b>	<b>19,353</b>





# CCDPH Vaccine Initiatives



Cook County DEPT. of  
Public Health



COOK COUNTY  
**HEALTH**

# COVID-19 Treatment

- COVID-19 treatments are available for individuals 12 years and older
- Treatments REDUCE hospitalizations and SAVE lives; must be started as soon as possible (within 5-10 days)
- COVID-19 treatments are being underutilized
  - Lack of public knowledge
  - Lack of provider knowledge & comfort
  - Confusion about where treatment is available
- There has already been documented a racial/ethnic disparity in those who are receiving COVID-19 treatment
- CCDPH is working with the CTI/contact tracers to make calls to recent positives to inform them about treatment
  - <https://dph.illinois.gov/covid19/covid-19-outpatient-therapy-locator.html>
- CCH is working to set up a telehealth program to support CCH and non-CCH community members to receive prescriptions for treatment



# COVID-19 TREATMENT OPTIONS

## MONOCLONAL ANTIBODIES

### MONOCLONAL ANTIBODIES INFUSION THERAPIES

for treating COVID-19 to prevent hospitalization, reduce viral loads, and lessen symptom severity. These are antibodies similar to the ones your body would naturally make in response to infection.

- Sotrovimab
- Bebtelovimab

## ORAL ANTIVIRALS

### ORAL ANTIVIRAL TREATMENTS

for the treatment of mild-to-moderate COVID-19 in adults.

- Molnupiravir
- Paxlovid

## PRE-EXPOSURE PROPHYLAXIS

### PRE-EXPOSURE TREATMENTS

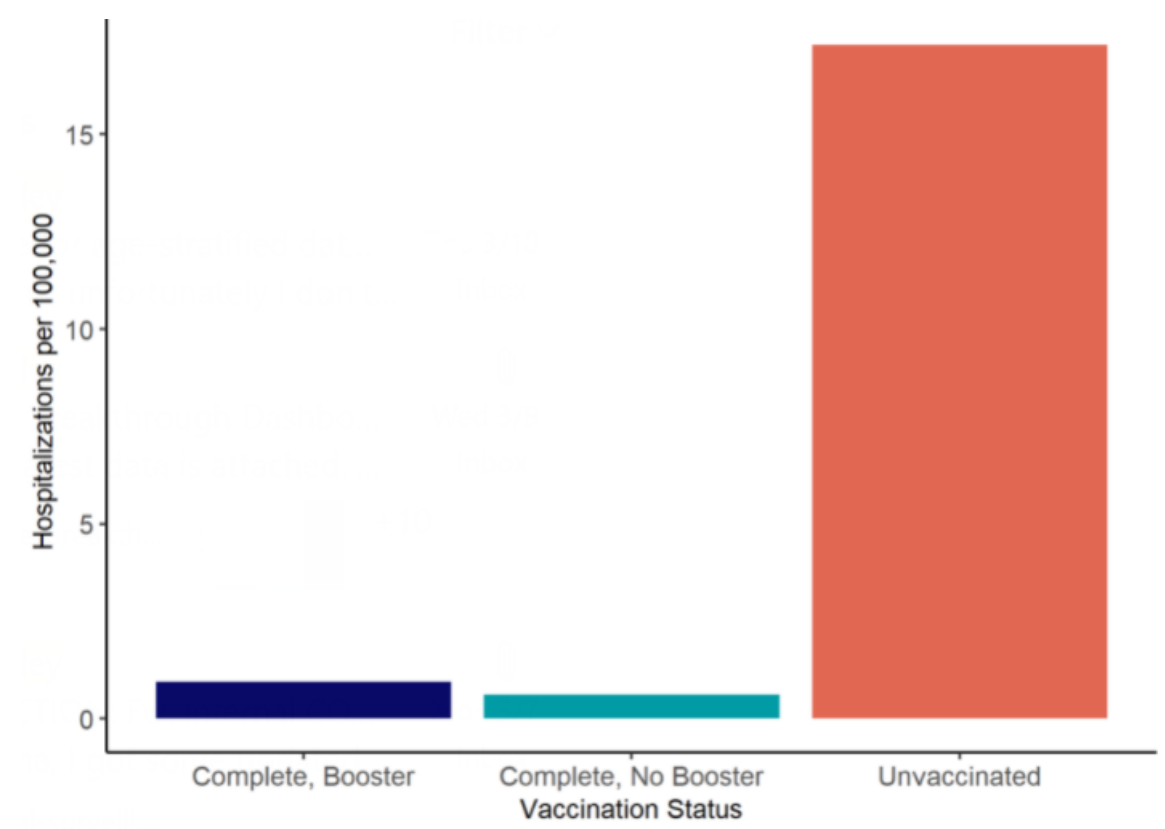
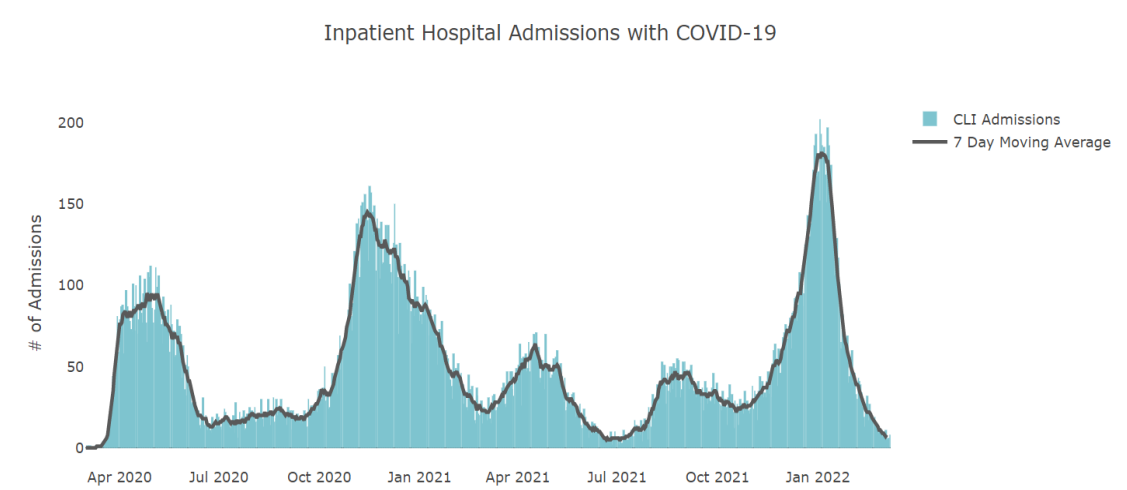
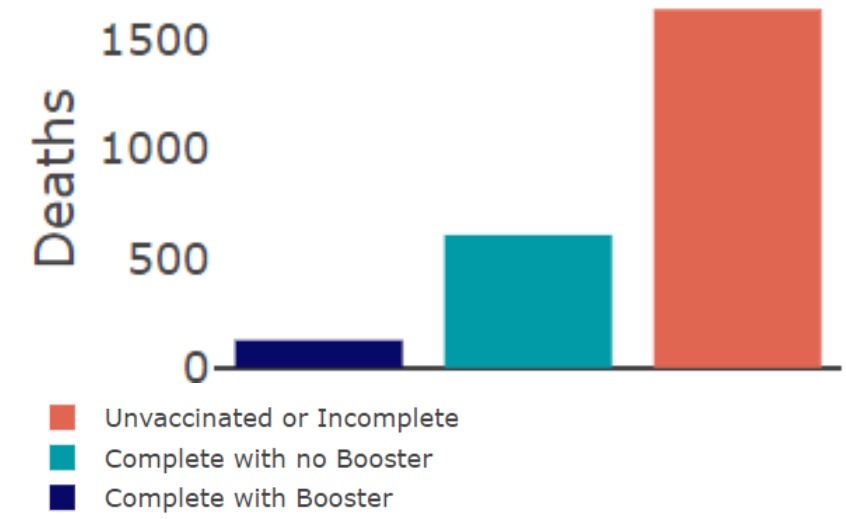
for those not infected with COVID-19 with moderate to severe immune compromise or whom vaccination is not available to a history of severe adverse reactions to vaccine components.

- Evusheld

To learn more visit [healthy.arkansas.gov](https://healthy.arkansas.gov)



# COVID-19 Data



\*Data reported to Cook County Department of Public Health, 2022-02-20 through 2022-02-26

# Mobile Vaccination Summary

Week ending 2/25

32

Week Total Events\*

8

Events for the Week in Priority\*\*  
Municipalities

32

with Vaccination

\*\*

Educational Only

0

Destination Vaccination  
Rides

1,396

Total events since Jan 2021 (as of 1/7)

49,282

Total mobile vaccinations given since  
Jan 2021 (as of 1/7)

4,524

Total In-Home Vaccinations  
to Date

## Looking ahead

80

Total **Scheduled/Future**  
Vaccination Events

7

CCH / CCDPH Events

73

CCDPH Coordinated Events with  
Other Providers

6

Scheduled Events  
for **Priority\*\*** Municipalities

### Event Type (week ending 2/25)

- 12 Community events
- 8 Education/Daycare events
- 3 Employer/Worksite events
- 6 Faith-based/Place of Worship events
- 2 Senior-focused/LTCF events
- 1 Other

### Doses Given\*\*\* (week ending 2/25)

- Pfizer or Moderna First Doses Given: 66
- Pfizer or Moderna Second Doses Given: 252
- Booster/Third Doses Given: 44
- J&J Doses Given: 6

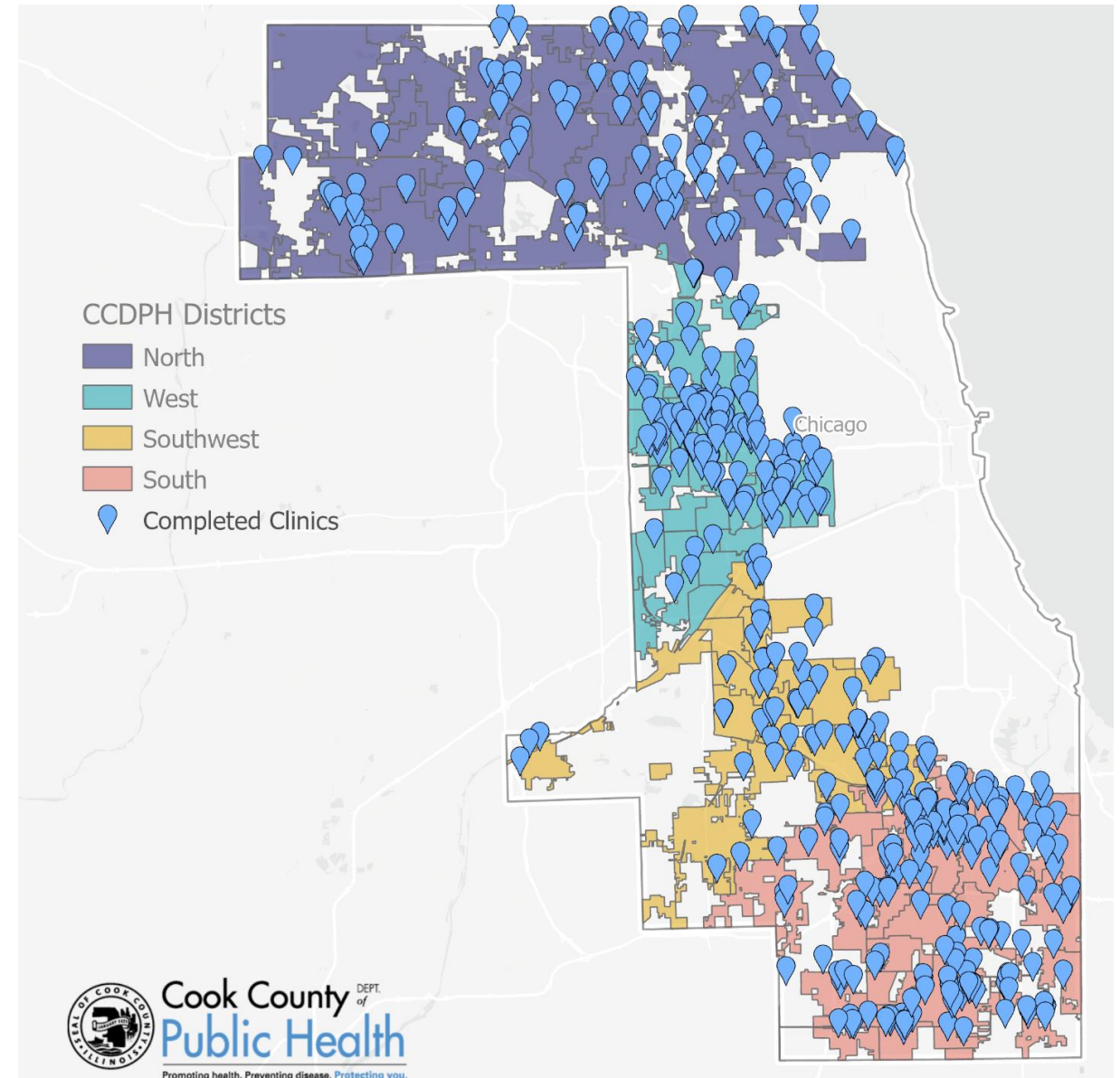
\*Total Events with Vaccination and Total Education Events may overlap and therefore may not necessarily add up to the Total number of Events  
\*\*Priority Municipalities are the 20 municipalities with the lowest vaccination rates during this reporting period  
\*\*\*Due to a potential timing lag in providers submitting data, this number may not reflect all vaccinations completed in the previous 7 days.

# Hyperlocal Vaccination Events

## *Suburban Cook County*

CCDPH Local Vaccination Initiative

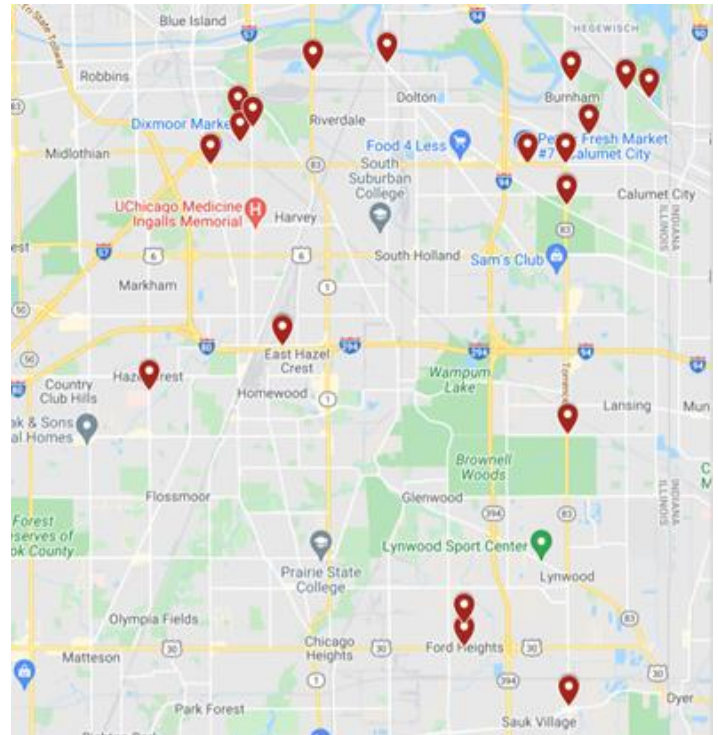
to-date as of 2/28/22





# Southland Hypervisibility Plan

- 13 billboards and 10 king bus ads = 8,916,561 expected impressions from Feb to May
- 10 Bus Shelters = 1,363,700 expected impressions from Feb to May
- 1600 Posters and Flyers distributed to key businesses, organizations and employers in Burnham, Calumet City, Dixmoor, East Hazel Crest, Hazel Crest, Riverdale and Sauk Village by 3 CBOs.



# CDC – Community Levels

Cook County is now in the **low**  
COVID-10 Community Level (data 3/10/22)

- **41 new COVID cases per 100,000**
- **2.1 hospital admissions per 100,000**
- **2.5% hospital beds occupied by COVID-19 patients**

COVID-19 Community Levels – Use the Highest Level that Applies to Your Community				
New COVID-19 Cases Per 100,000 people in the past 7 days	Indicators	Low	Medium	High
Fewer than 200	New COVID-19 admissions per 100,000 population (7-day total)	<10.0	10.0-19.9	≥20.0
	Percent of staffed inpatient beds occupied by COVID-19 patients (7-day average)	<10.0%	10.0-14.9%	≥15.0%
200 or more	New COVID-19 admissions per 100,000 population (7-day total)	NA	<10.0	≥10.0
	Proportion of staffed inpatient beds occupied by COVID-19 patients (7-day average)	NA	<10.0%	≥10.0%

<https://www.cdc.gov/coronavirus/2019-ncov/science/community-levels.html>  
and <https://ccdphcd.shinyapps.io/covid19/>

Low	Medium	High
<ul style="list-style-type: none"><li>• Stay <u>up to date</u> with COVID-19 vaccines</li><li>• <u>Get tested</u> if you have symptoms</li></ul>	<ul style="list-style-type: none"><li>• If you are <u>at high risk for severe illness</u>, talk to your healthcare provider about whether you need to wear a mask and take other precautions</li><li>• Stay <u>up to date</u> with COVID-19 vaccines</li><li>• <u>Get tested</u> if you have symptoms</li></ul>	<ul style="list-style-type: none"><li>• Wear a <u>mask</u> indoors in public</li><li>• Stay <u>up to date</u> with COVID-19 vaccines</li><li>• <u>Get tested</u> if you have symptoms</li><li>• Additional precautions may be needed for people <u>at high risk for severe illness</u></li></ul>
People may choose to mask at any time. People with symptoms, a positive test, or exposure to someone with COVID-19 should wear a mask.		

<https://www.cdc.gov/coronavirus/2019-ncov/science/community-levels.html>

# CCDPH Masking Guidance

- [Masking as part of isolation after infection and quarantine after exposure](#) is still necessary to prevent COVID-19 transmission. This includes in workplaces and schools.
- Masks are required in airports and interstate transportation by [federal order](#).
- Healthcare facilities including hospitals, clinics and long-term care facilities should continue masking in accordance with the [Illinois Department of Public Health](#) and [CDC guidance](#).
- CCDPH continues to recommend masking with a well-fitting high-quality mask, such as a KN95 or N95 respirator, for those who are considered [at high risk for severe COVID-19 illness](#) when they are in public indoor spaces or other places where individuals near them may be unvaccinated.



# CCDPH Contact Tracing Initiative



Cook County DEPT. of  
Public Health



COOK COUNTY  
**HEALTH**

# COVID-19 and Contact Tracing

- The state IDPH Surge Center has taken over most tracing and case investigation activities
- Individuals testing positive are contacted by text and can opt into tracing (IDPH)
- CCDPH remains responsible for
  - congregate care settings
  - high risk facilities and populations
  - specific outbreaks in other settings
  - school guidance
- In February 2022, 90.3% (436/483) of outbreak-related congregate care facility cases referred to CCDPH were linked (to their appropriate outbreaks) within 48 business hours.





# Thank you



Cook County DEPT. of  
Public Health



COOK COUNTY  
**HEALTH**