

# Cook County Sheriff's Office FY2016 Budget



Cook County Sheriff  
Thomas J. Dart





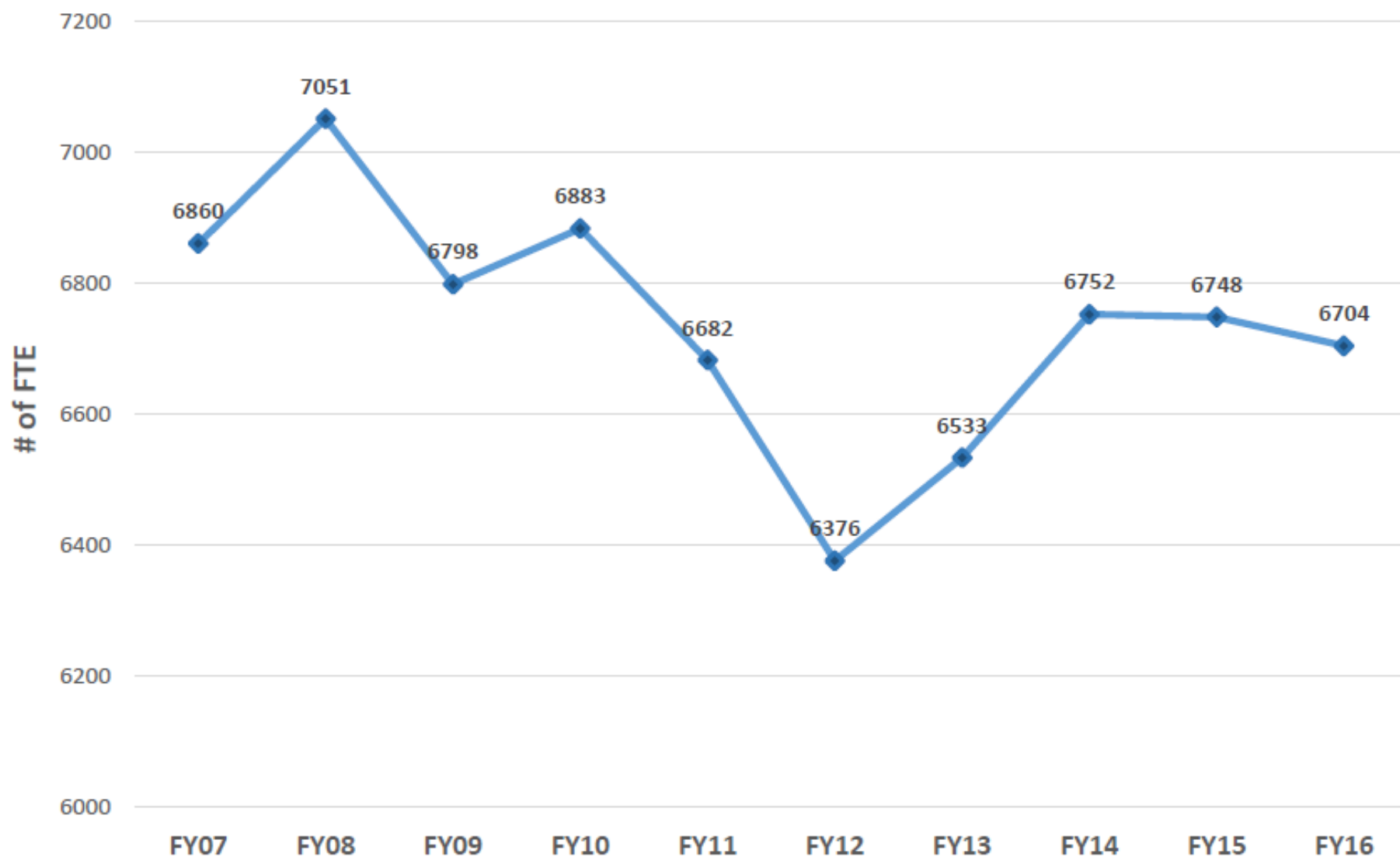
# COOK COUNTY SHERIFF'S OFFICE

## BUREAU OF INFORMATION AND TECHNOLOGY

### BUSINESS INTELLIGENCE UNIT



Total FTE by Fiscal Year





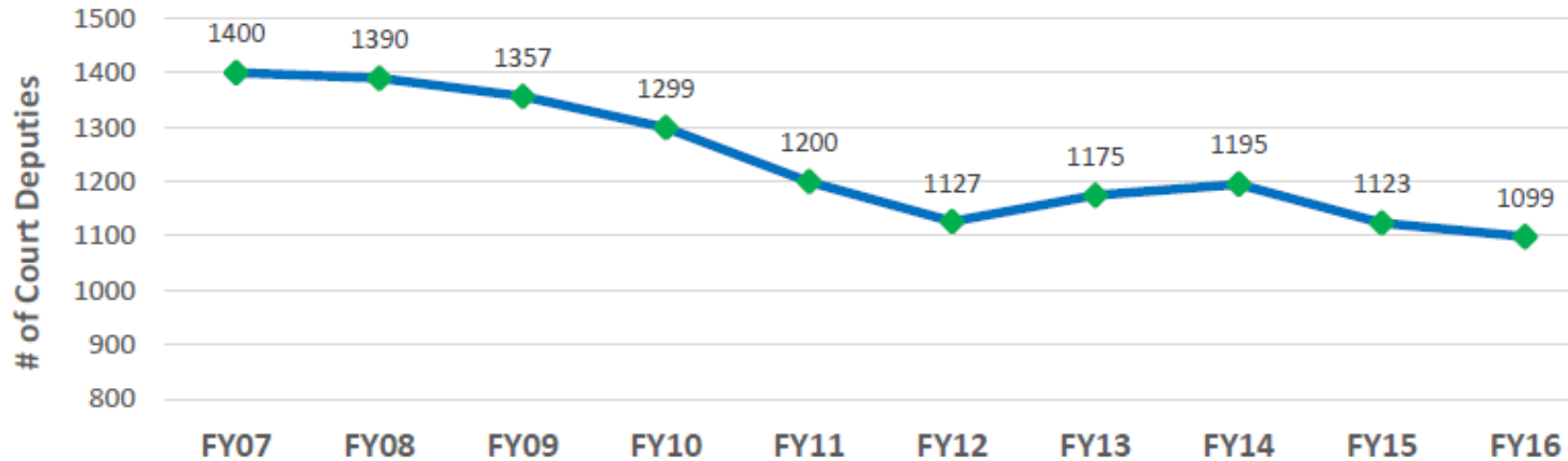
# COOK COUNTY SHERIFF'S OFFICE

## BUREAU OF INFORMATION AND TECHNOLOGY

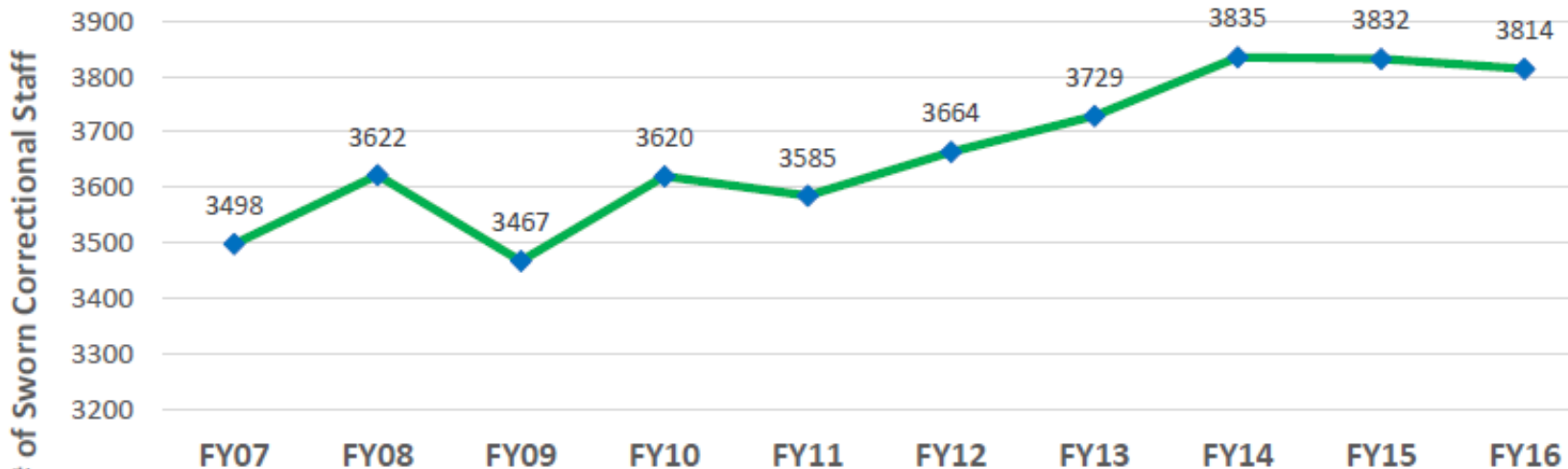
### BUSINESS INTELLIGENCE UNIT



#### Court Deputies by Fiscal Year



#### Sworn Correctional Staff by Fiscal Year



# Suppressing Chicago Crime

**Chicago Initiative Personnel Deployed 2014-2015**

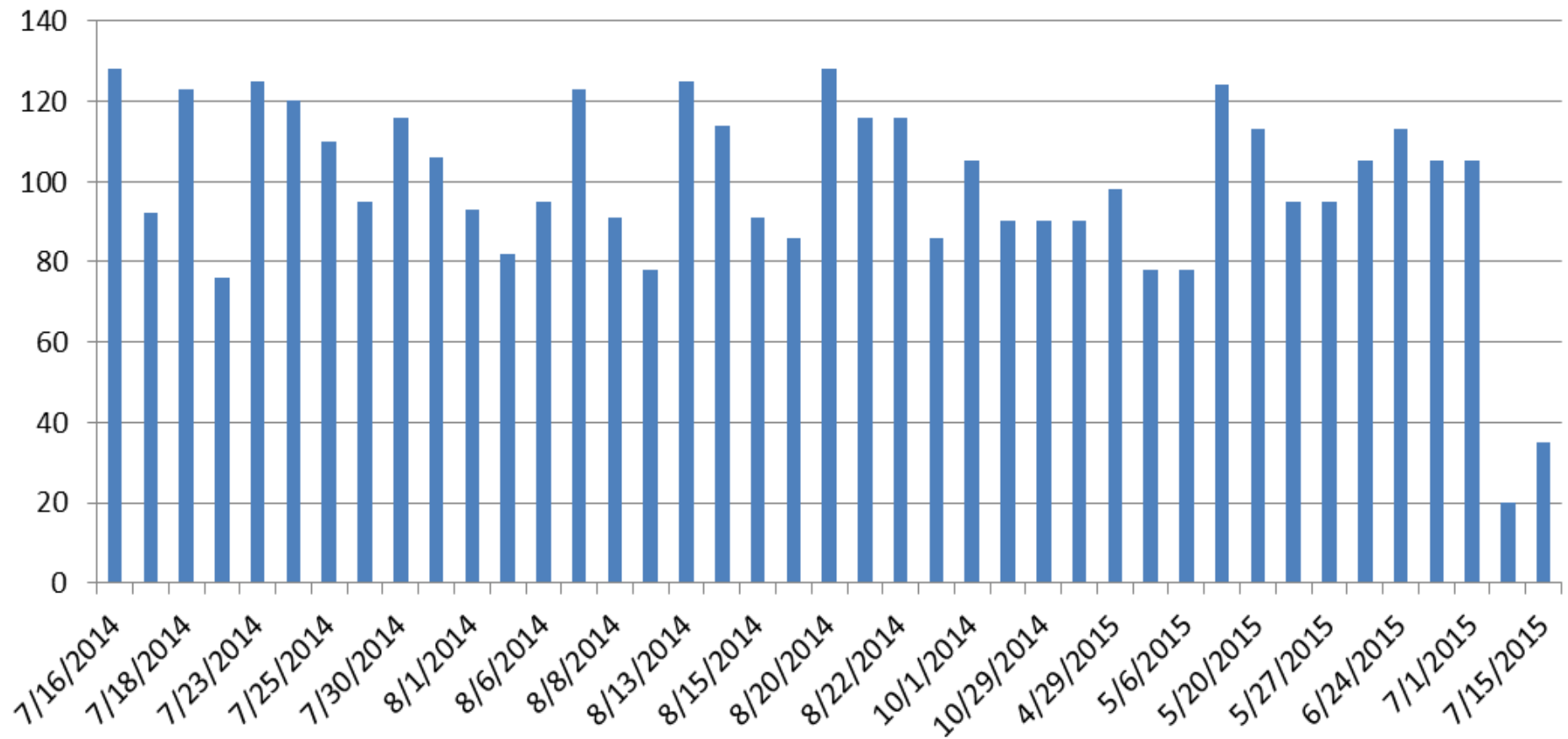
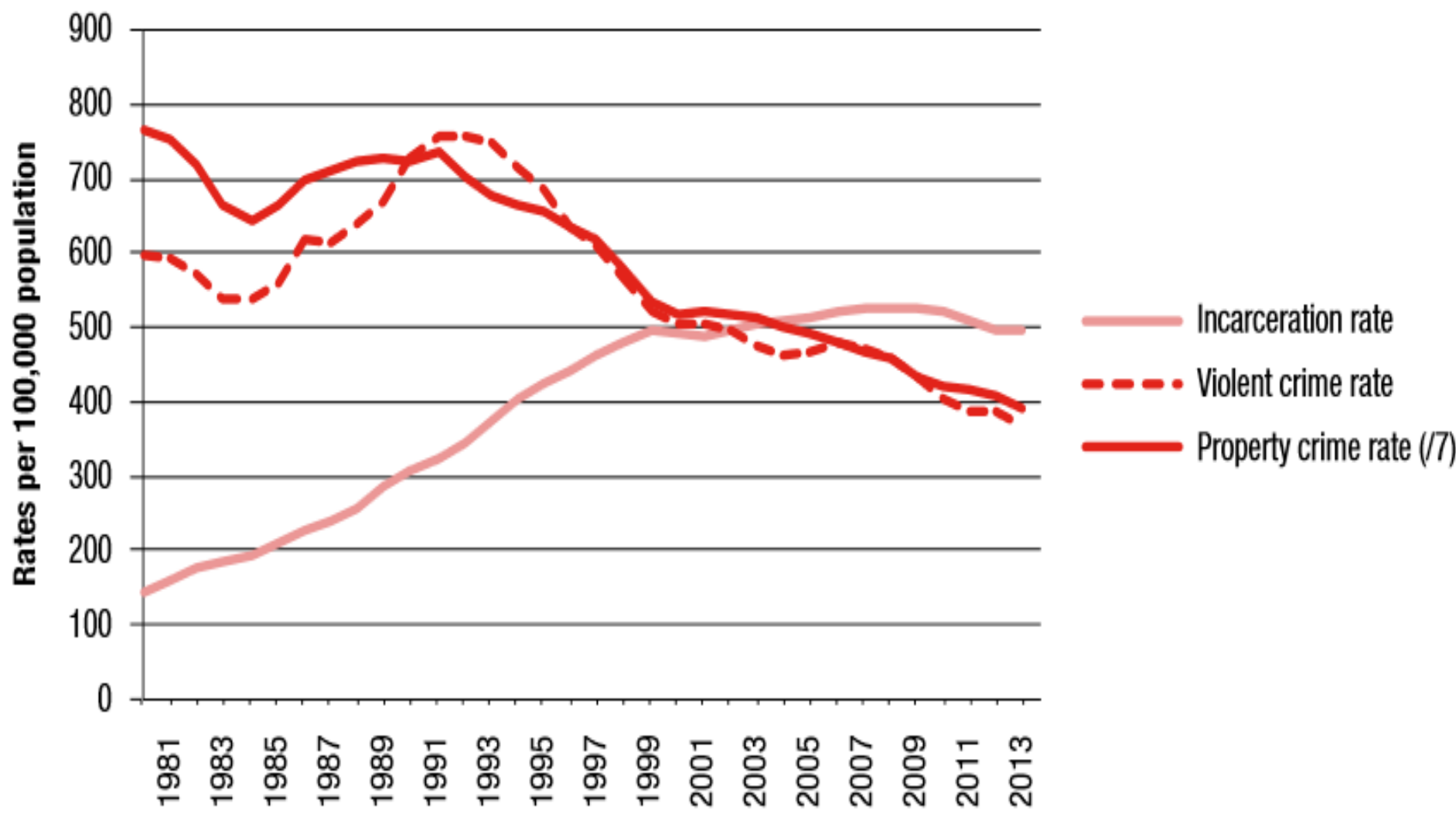


Figure 2: Incarceration and Crime Rates (1980-2013)



Source: Federal Bureau of Investigation, Uniform Crime Reports; U.S. Department of Justice, Bureau of Justice Statics.<sup>22</sup>





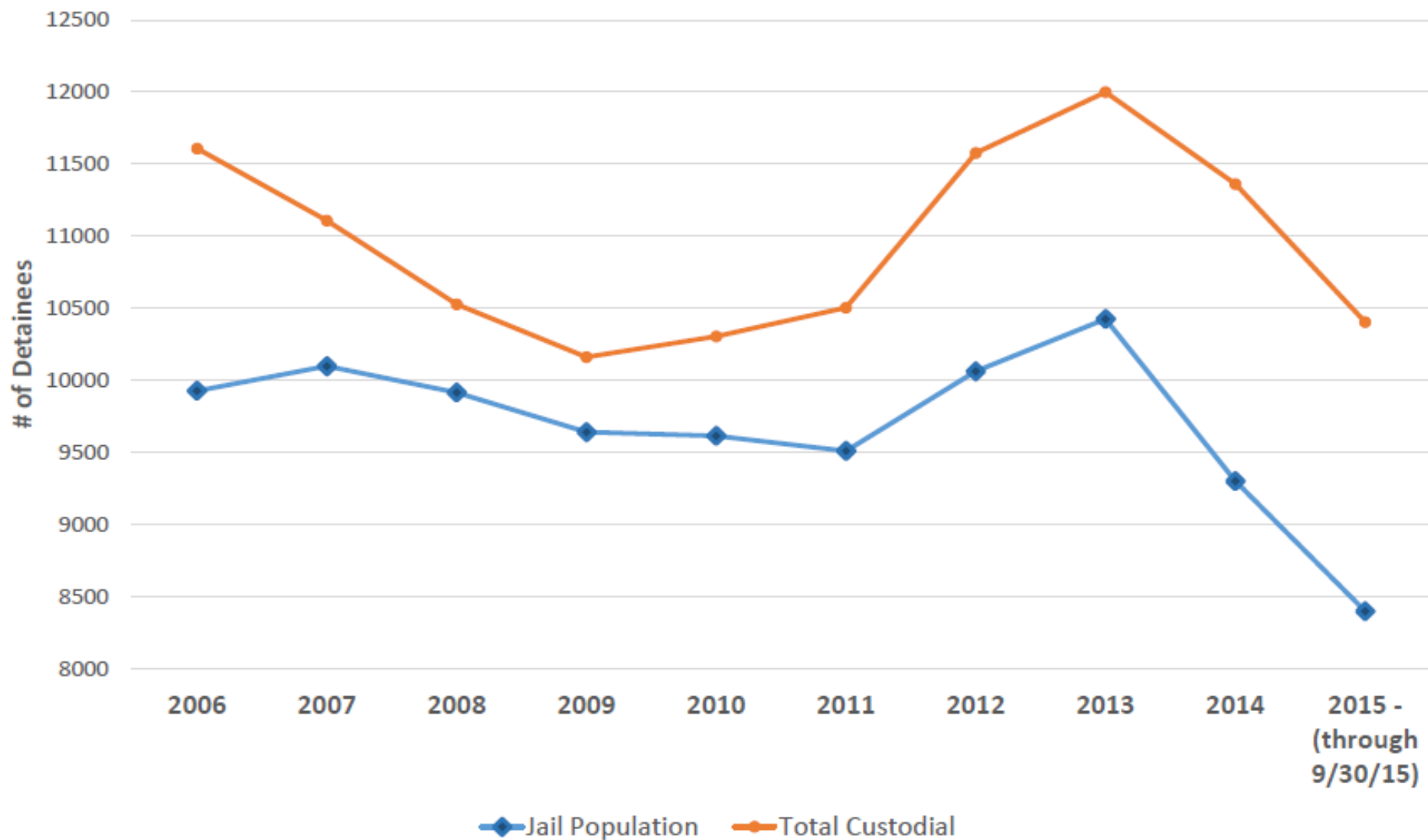
# COOK COUNTY SHERIFF'S OFFICE

## BUREAU OF INFORMATION AND TECHNOLOGY

### BUSINESS INTELLIGENCE UNIT



2006 to 2015 Jail vs Total Custodial Population by Year for CCDOC



\* Jail Population includes Divisional, WR, Hospital, PRC \*\*Total Custodial includes Jail Population, Community Corrections, and Outlying Population



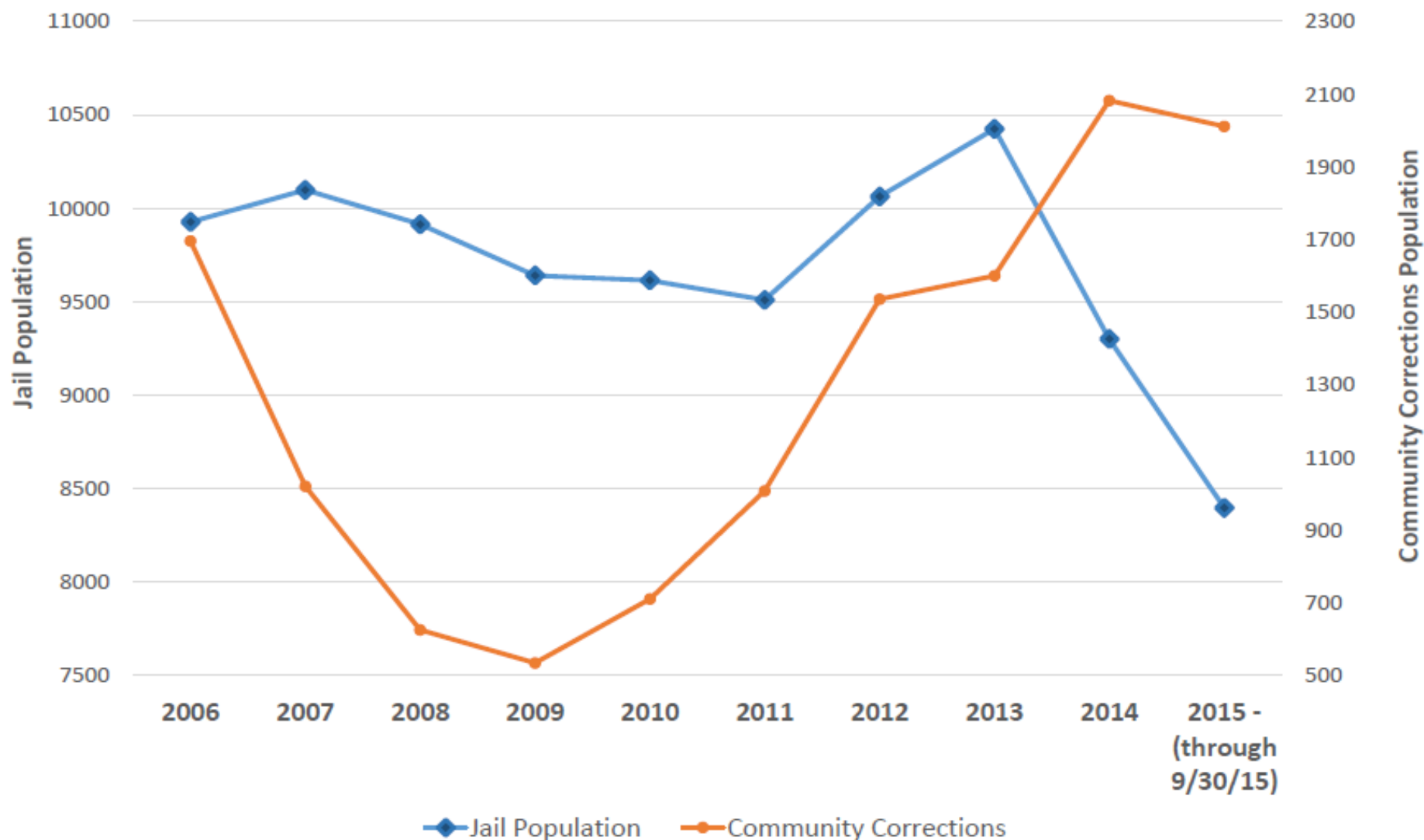
# COOK COUNTY SHERIFF'S OFFICE

## BUREAU OF INFORMATION AND TECHNOLOGY

### BUSINESS INTELLIGENCE UNIT



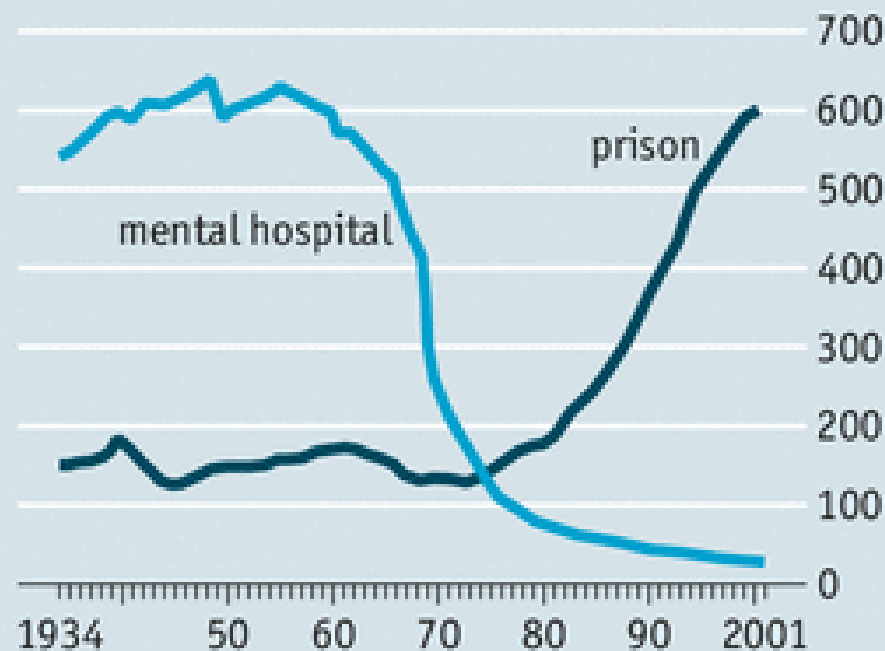
### 2006 to 2015 Jail Population vs Community Corrections



# Criminalization of Mental Illness

## Out of sight...

America's mentally ill held in:  
Per 100,000 adults



Source: B.E. Harcourt, "An Institutionalisation Effect"



# That Was Then...

---



Traditional jail cells



# ...This is Now

Group  
Counseling



Cook County Sheriff's Mental Health Transition Center



# ...This is Now



Cook County Sheriff's Mental Health Transition Center

# ...This is Now

---

Job Fair



---

Cook County Sheriff's Mental Health Transition Center



# ...This is Now



Cook County Sheriff's Mental Health Transition Center



# ...This is Now

Job Fair



Cook County Sheriff's Mental Health Transition Center



# ...This is Now

Alumni  
Reunion



Cook County Sheriff's Mental Health Transition Center