



Public Defender

FY2017 Budget Presentation

October 24, 2016

Public Defender

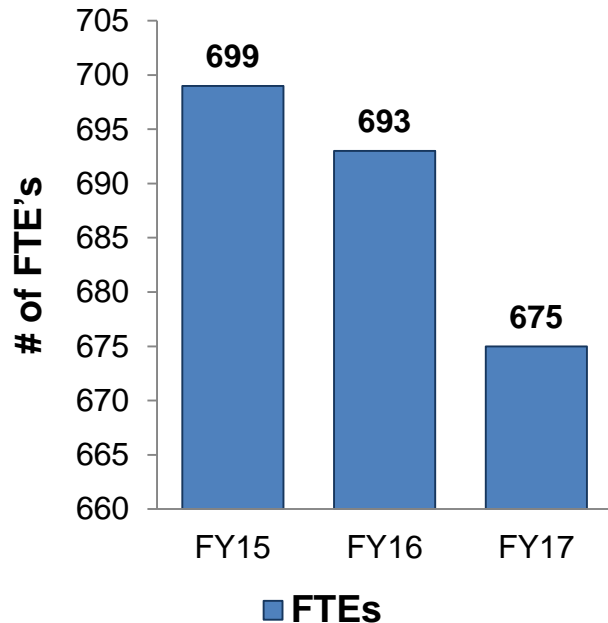
FY2017 Budget Presentation



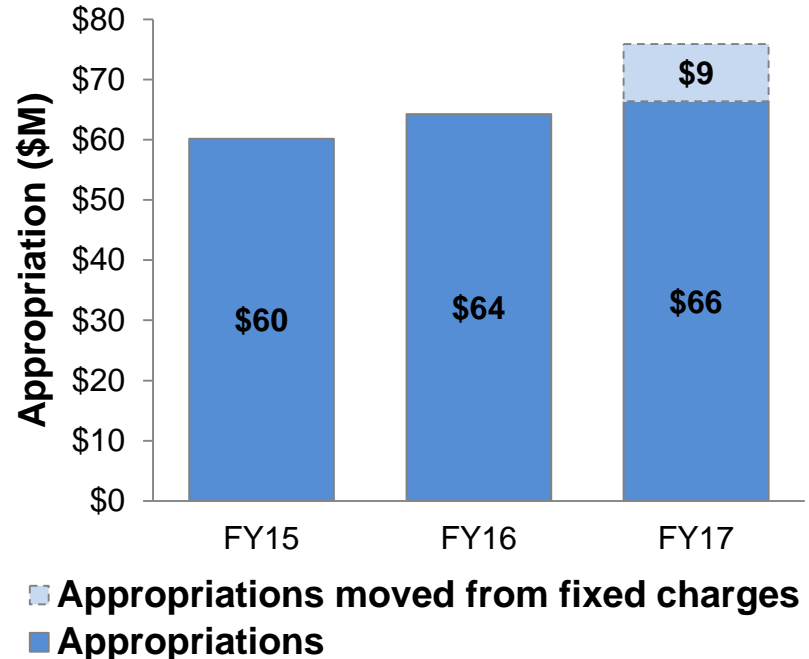
Mission

The Public Defender protects the fundamental rights, liberties, and dignity of each person whose case has been entrusted to the Public Defender's (PD's) Office by providing the finest legal representation.

Staffing



Budget

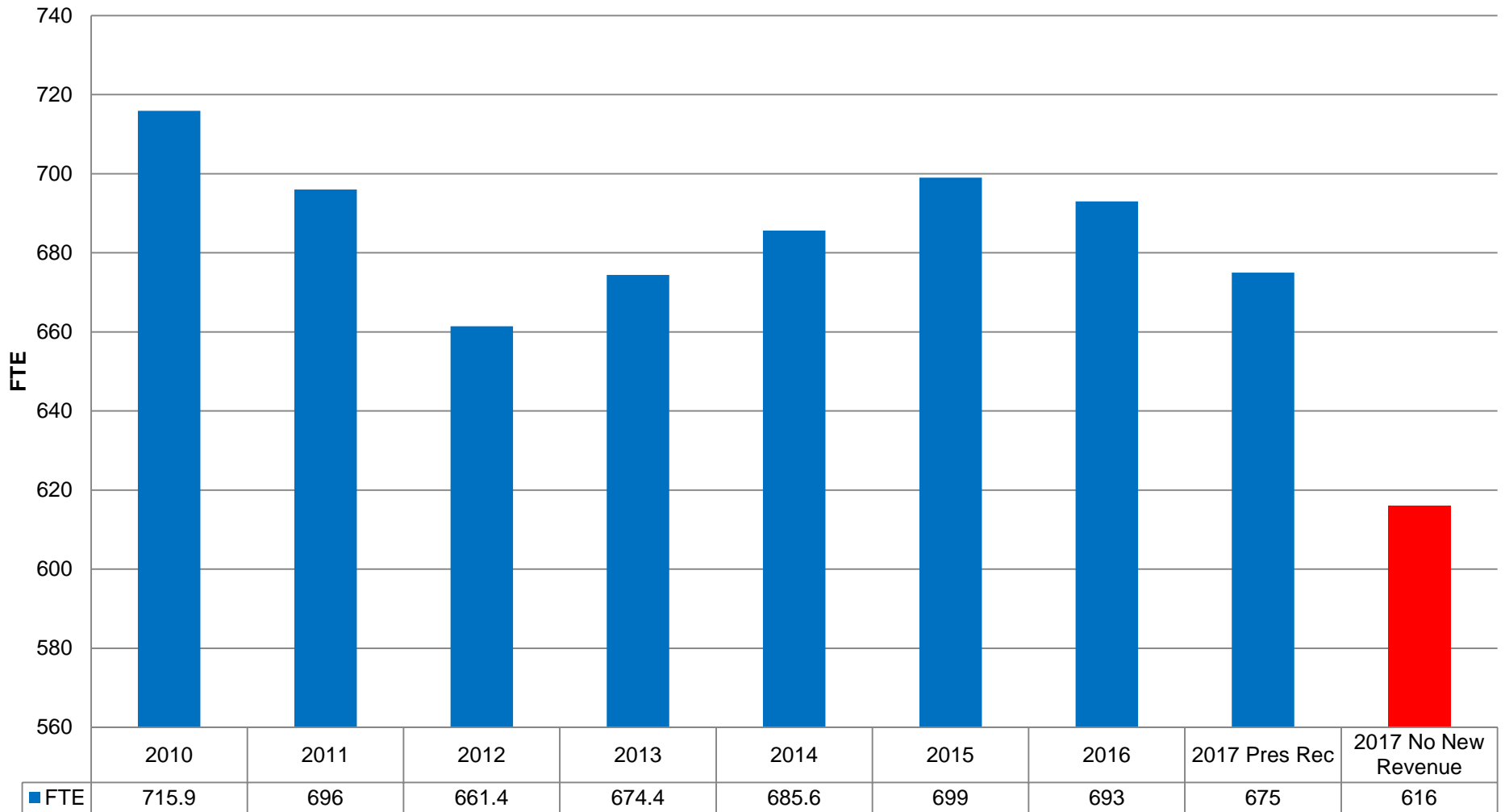


Public Defender

FY2017 Budget Presentation



Historical FTE Summary



Public Defender– Program Inventory

FY2017 Budget Presentation



Administration (33 FTE)

Supervises departmental programs and manages administrative functions. Oversees internal employment litigation and labor relations. Engages in legislative coordination and media relations. Provides training to attorneys and staff.

Felony Representation (178 FTE)

Provides legal services to individuals facing felony charges other than homicide charges.

Misdemeanor Representation (144 FTE)

Provides legal services to individuals facing misdemeanor charges.

Homicide Representation (50 FTE)

Provides legal services to individuals facing homicide charges.

Juvenile Representation (37 FTE)

Provides legal services to individuals facing criminal charges who under 18 years of age at the time of the offense.

Public Defender– Program Inventory

FY2017 Budget Presentation



Civil Representation (42 FTE)

Provides legal services to individuals facing charges of abuse, neglect, or dependency, individuals who the State seeks to involuntarily commit to a mental health facility, and individuals in hearings to establish a child's parentage.

Multiple Defendant Representation (31 FTE)

Provides legal services to individuals in felony and first degree murder cases where more than one person is accused.

Child Protection Conflicts (18 FTE)

Provides legal services to individuals facing charges of abuse, neglect, or dependency and individuals in hearings to establish a child's parentage where more than one parent is involved.

Legal Resources (43 FTE)

Provides legal services to individuals in post-conviction matters and appellate cases. Provides legal research, training and litigation assistance to attorneys.

Public Defender– Program Inventory

FY2017 Budget Presentation



Forensic Science and Trial Technology (15 FTE)

Provides legal services in cases involving forensic evidence. Provides training, case reviews, and litigation assistance to attorneys. Provides technological and presentation support and coordinates with the Bureau of Technology.

Mitigation (9 FTE)

Provides support to attorneys by conducting research regarding individuals represented by the Office and engaging in sentencing advocacy.

Specialty Courts (7 FTE)

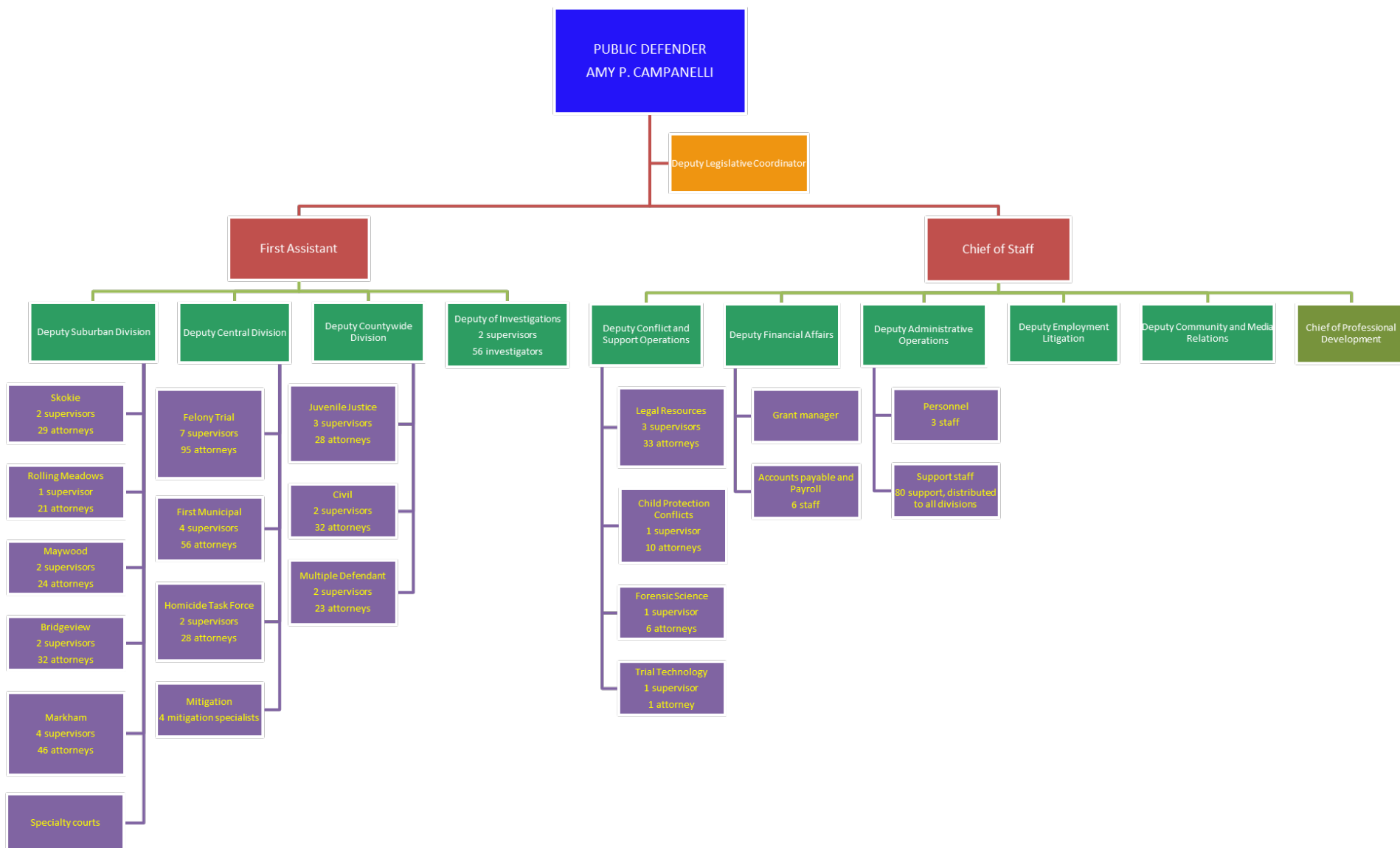
Provides legal services to individuals in specialty courts, including Drug Treatment Courts, Mental Health Treatment Courts, and Veterans' Treatment Courts.

Investigations (68 FTE)

Provides support to attorneys by conducting preliminary searches, serving court documents, locating witnesses, conducting interviews, preparing reports, taking photographs, testifying in court and transporting clients and/or witnesses.

Public Defender – Organization Chart

FY2017 Budget Presentation

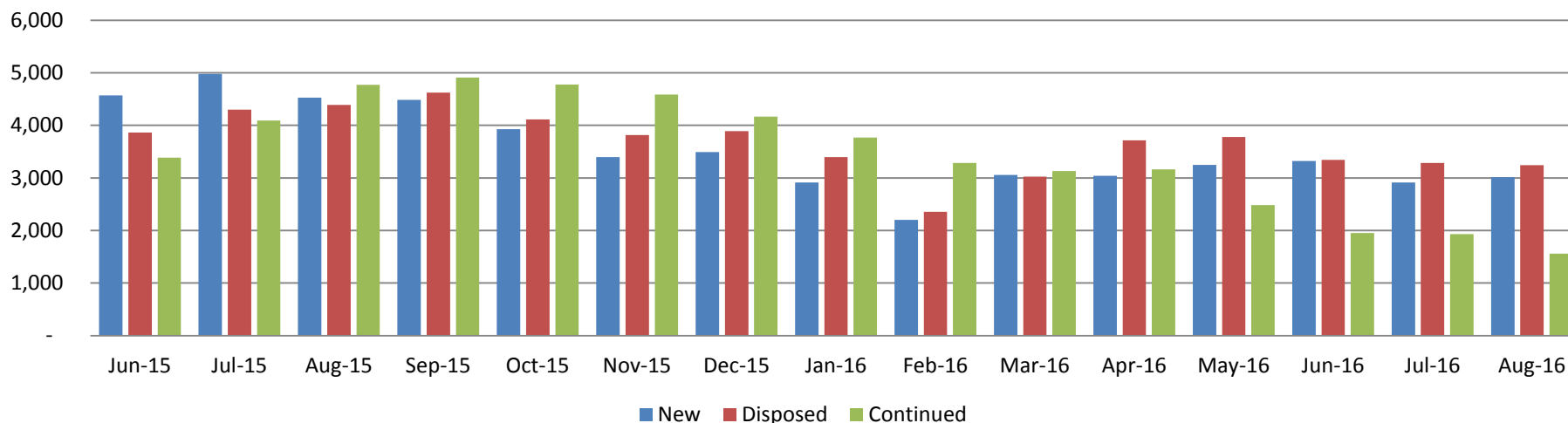


Public Defender– 2017 STAR goals and targets

FY2017 Budget Presentation



Misdemeanor Cases



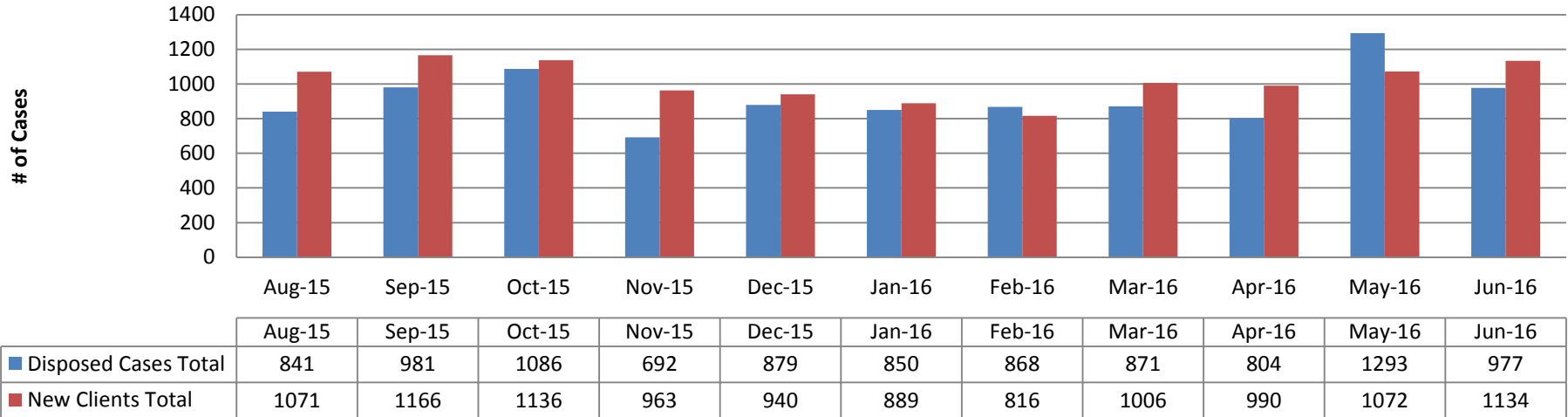
- Over the 12 month period between September 2015 and August 2016, our 1st Municipal Division has averaged 857 misdemeanor cases per attorney. The annual caseload standard from the ABA is 400 misdemeanors per attorney.



Public Defender– 2017 STAR goals and targets

FY2017 Budget Presentation

Felony Cases



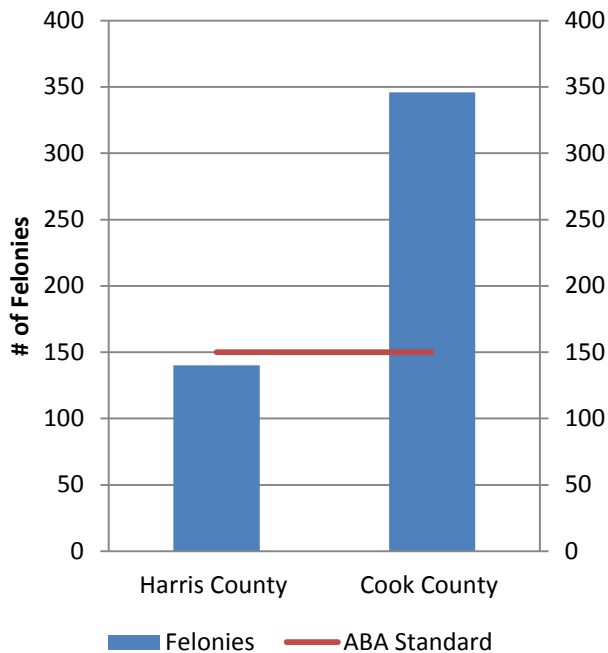
- Over the 11 month period between August 2015 and July 2016, 26th and California has averaged 29 disposed cases per month per felony attorney. Annually, each felony attorney disposes of 346 cases per year. The annual felony caseload standard from the ABA is 150 felonies per attorney.



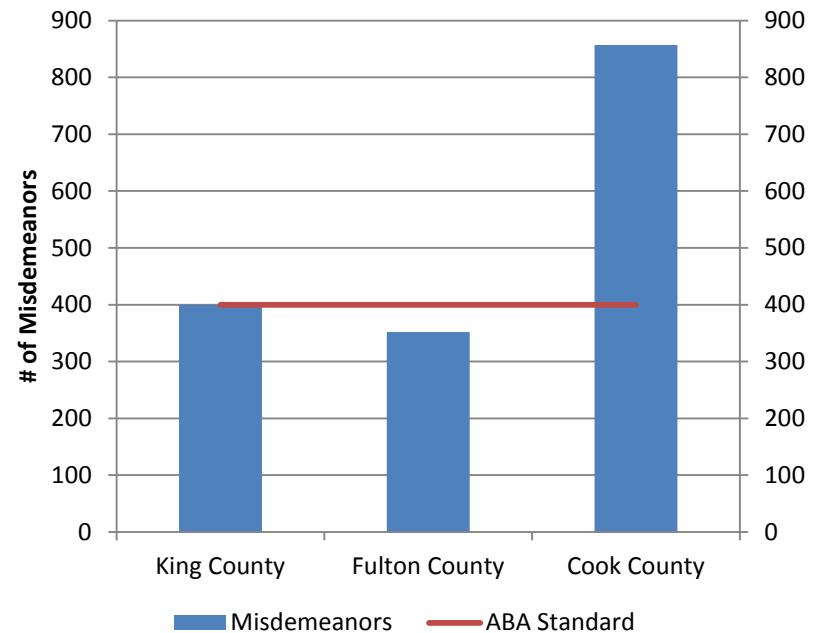
Caseloads

Assistant Public Defenders in both the Felony Trial Division and the Misdemeanor Division have caseloads that are greater than two times the caseload standard recommended by the American Bar Association. The felony and misdemeanor caseloads are also twice the caseloads that exist in comparable counties.

Annual Felony Caseload



Annual Misdemeanor Caseload





- Improvements in Training
- Community Outreach
- Holiday Bond Court and Central Bond Court
- Improvement in recognition of mental health issues
- Support for legislative reforms
- Increased focus on client-centered representation



- Collaborating with CCHHS to create a Mental Health Unit to increase awareness of mentally ill patients.
- Improving the operation of Bond Court, with the aim of achieving fair and just bonds, determined after a hearing where full information is provided to the bond court judge. This will reduce the number of people incarcerated during the pendency of their criminal cases.
- Transitioning from LegalEdge, our paper based case management system, to eDefender, our new cloud based case management system.
- Collaboration to create restorative justice hubs and community courts, as an alternative to arrest and criminal court involvement.
- Increasing holistic nature of client representation, where underlying problems are addressed to prevent future criminal court involvement.

Public Defender– Comparisons

FY2017 Budget Presentation



Texas created caseload limits that are reflected in these numbers	236 Class B Misdemeanors: equivalent to Illinois Class B misdemeanor 216 Class A Misdemeanors: equivalent to Illinois' Class A misdemeanor 174 State Jail Felonies: slightly less than Illinois' Class 4 144 Third Degree Felonies roughly equivalent to Illinois Class 3 and 2 105 Second Degree Felonies: roughly equivalent to Illinois Class 1 and Class X 77 First Degree Felonies: roughly equivalent to 1 st degree murder
Harris County: Houston TX: our closest comparison:	Harris County does not represent people on regular misdemeanors. For other matters, caseload caps are: 350 mental health misdemeanors/attorney annually; 150 felonies/attorney annually; 200 juvenile delinquency/attorney annually; 25 appeals/attorney annually
Atlanta, GA population approx. 450,000	352 misdemeanors/attorney annually; 126 felonies/attorney annually
Augusta, GA 35 attorneys in the office. Population 197,000	475 misdemeanors/attorney annually; 175 felonies/attorney annually; 120 juvenile delinquency cases annually.
Guilford County, NC; 29 Public Defenders/ county population 500,000	Public defenders handle only misdemeanors, capped at 250 at one time/attorney. They count dispositions based on each charge, not each arrest or case. Thus, cap is at total of 550 dispositions/attorney annually
Seattle, WA population 650,000 in King County.	A Supreme Court rule in Washington sets a limit of 400 misdemeanor/attorney annually or 150 felonies/attorney annually. King County averages 100 felonies/attorney annually

- The annual caseload standard from the ABA is 400 misdemeanors per attorney; 150 felonies per attorney.