

# COVID-19 Update

Debra D. Carey, Interim CEO

November 4, 2020



COOK COUNTY  
**HEALTH**

# Resurgence is here

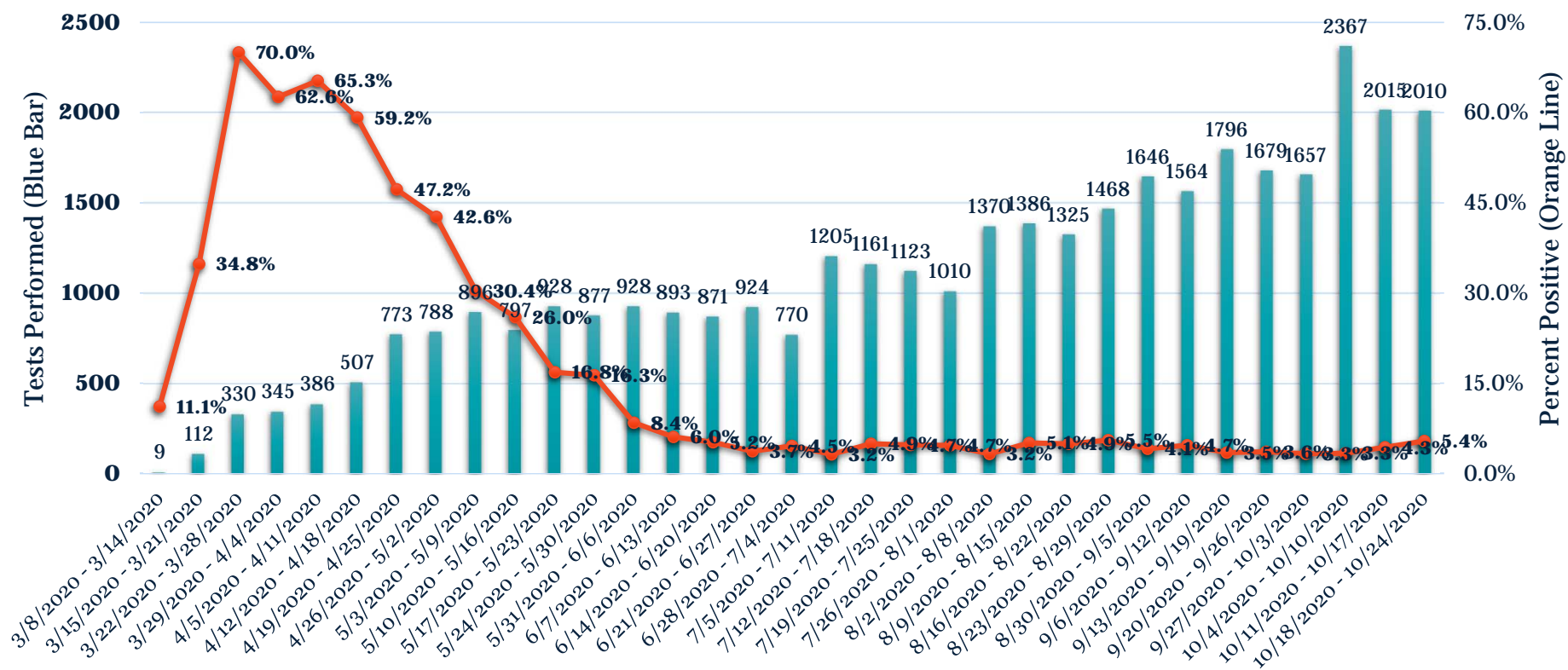
## Situational Awareness

- New mitigation restrictions in place in Chicago and Suburban Cook County because of rising case numbers.
- Positivity rate is increasing at Cook County Health.
- Inpatient volumes rising at Stroger.
- Resurgence Committee meeting regularly.
- Public Health contact tracing underway.
- Continued containment at Cermak.

# COVID-19 Patient Testing Conducted across all CCH locations

12,320 patients have have been tested for COVID-19 through CCH

CCH All Patients Tested vs. Positive Rate



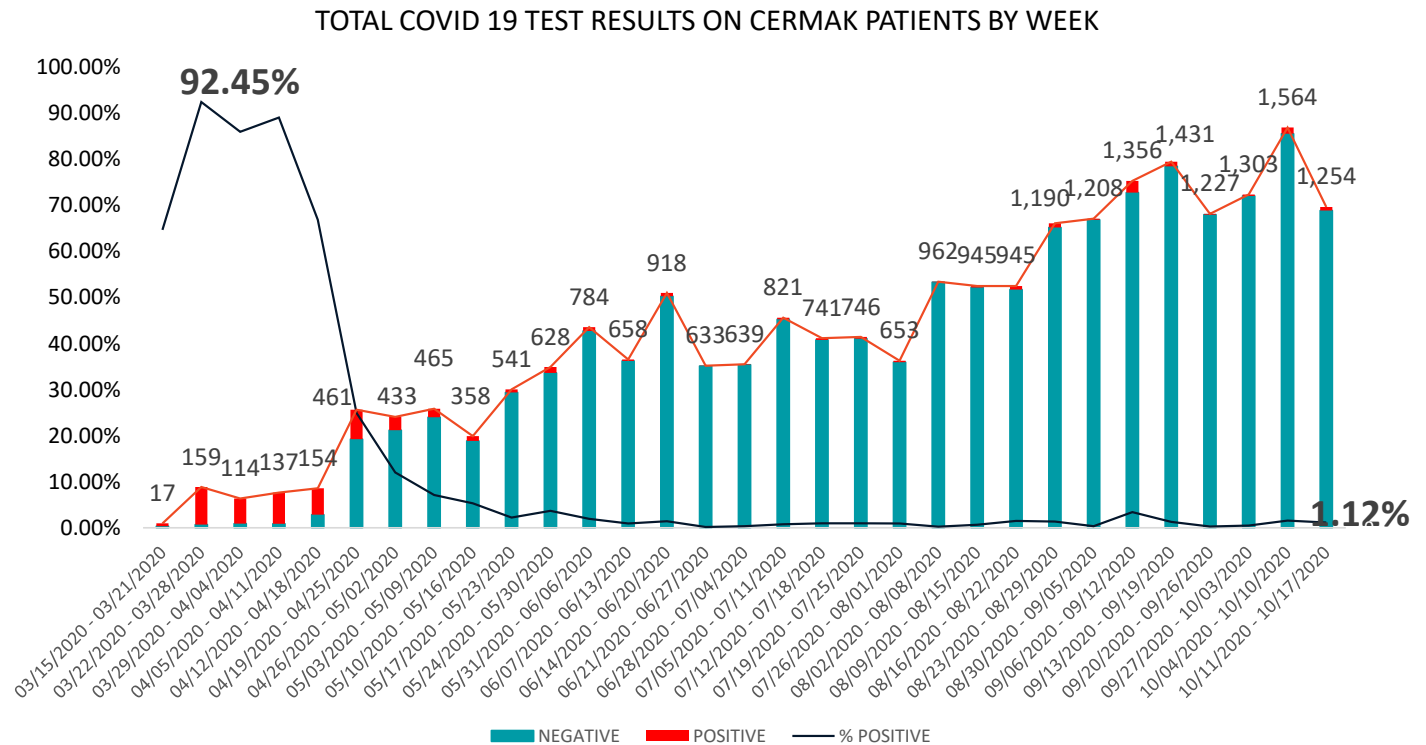
# Inpatient COVID-19 Data Stroger Hospital

Bed Inventory Available for COVID-19 Patients*	
Total General medical/surgical beds	254**
Total ICU Beds	58**
Total Ventilators	58
<i>*As of 10.29.20, CCH had one general medical-surgical unit and one medical intensive care unit designated for COVID-19. Additional COVID units can be opened when needed. CCH intends to continue as much non-COVID care as possible during this current surge.</i> <i>**Licensed beds. Surge beyond current staffing levels would require additional resources.</i>	
Total COVID-19 Inpatients to Date	
Unique COVID-19 Patients Hospitalized to date	886
Unique COVID-19 Patients ICU to date	119
Percent of COVID-19 ICU patients vented	33%

# Cermak Update

## The Importance of Testing

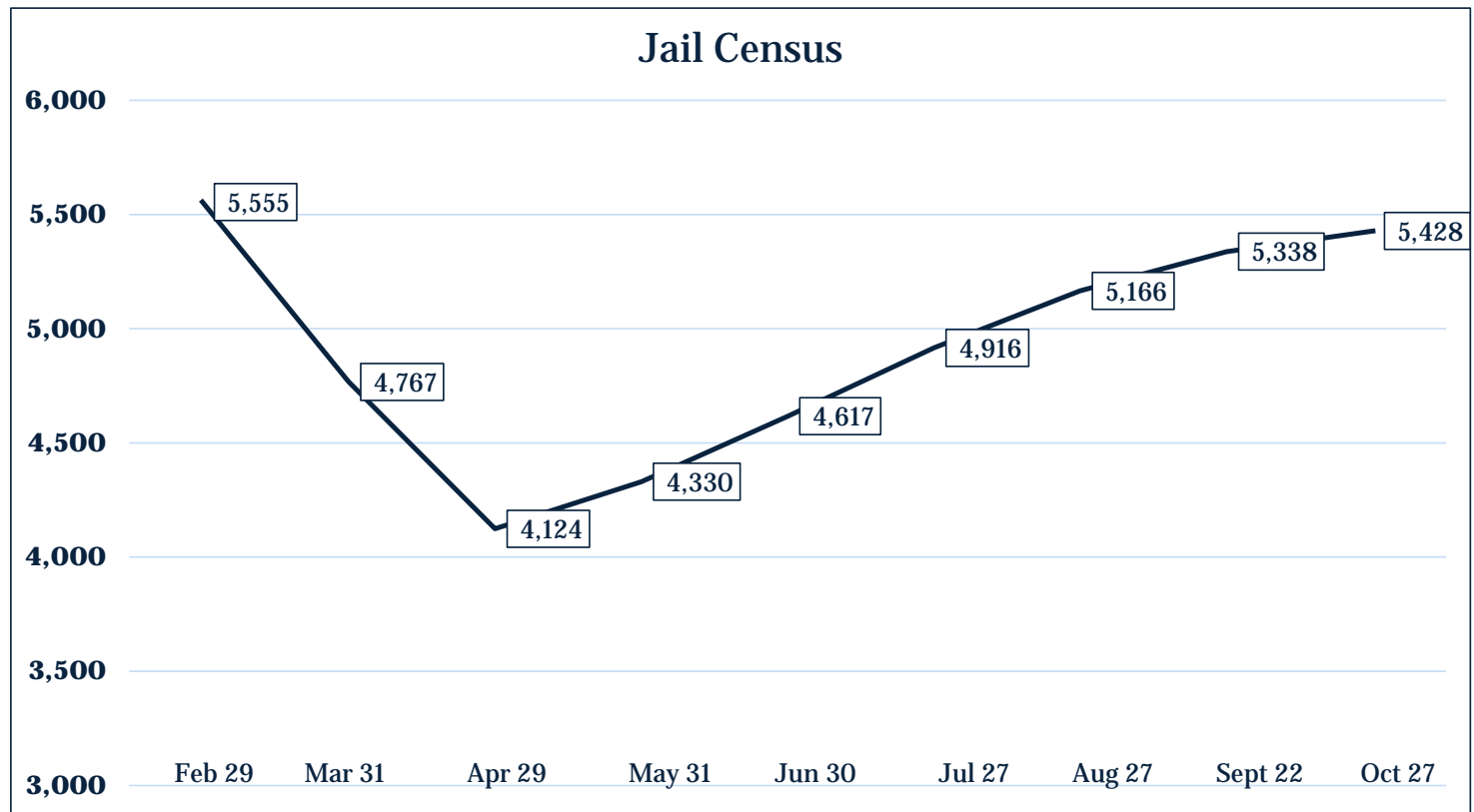
*This graph illustrates the impact of testing availability. As was true in the community, our initial testing was constrained exclusively to symptomatic patients. The availability expanded eventually to include patients without overt signs of infection and then to surveillance. Testing continues to inform care and housing and plays a critical role in focused interventions and ongoing containment.*



# Cermak Update

- Cermak remains our highest priority.
- Population continues to rise compressing space to accommodate social distancing. There are 350-400 detainees awaiting transfer to the Illinois Department of Corrections on any given day.
- Lower census allowed for single celling, distancing and other mitigation strategies that have led to containment.

	Feb 29	March 31	April 29	May 31	June 30	July 27	Aug 27	Sept 22	Oct 27
Census	5,555	4,767	4,124	4,330	4,617	4,916	5,166	5,338	5,428



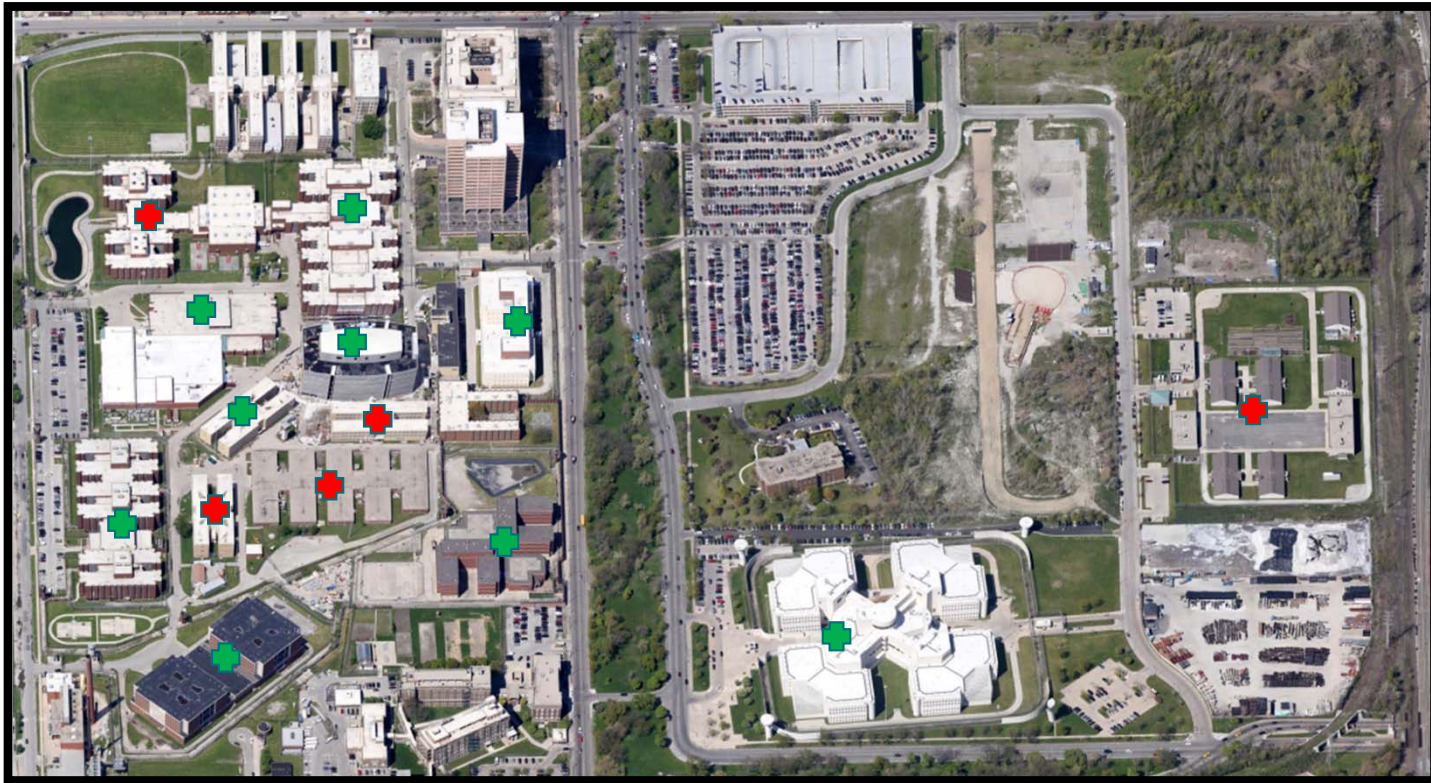
**COOK COUNTY**  
**HEALTH**

Source: <https://www.cookcountysheriff.org/data/>



# Cook County Jail Housing:

Expanded footprint to achieve social distancing



COOK COUNTY  
HEALTH

✚ = pre-COVID

✚ = post-COVID

# CCH COVID Testing

All CCH Testing\* as of 10/26/20

Test Result	Test Count	Percent
Negative	53,731	92%
Positive	4,271	7%
Undetermined	529	1%
<b>Grand Total</b>	<b>58,522</b>	<b>100%</b>

*\*This slide represents all tests conducted at CCH. If a patient was tested multiple times, each test is counted.*



# Patient Testing

All Testing as of 10/26/20

Gender	%
Female	32%
Male	68%

Age Group	%
0-20	10%
21-40	43%
41-64	38%
65 +	10%

## Positives Only

Gender	%
Female	37%
Male	63%

Age Group	%
0-20	6%
21-40	35%
41-64	49%
65 +	10%

Due to rounding, totals may not equal 100.

# Patient Testing

All Testing as of 10/26/20

Race	%
African/American	58%
American Indian/Alaska Native	2%
Asian	2%
Other/Multiple/Unknown	9%
White	29%

Ethnicity	%
Hispanic/Latino/Spanish Origin	21%
Non-Hispanic/Latino/Spanish Origin	79%

Positives Only

Race	%
African/American	41%
American Indian/Alaska Native	6%
Asian	2%
Other/Multiple/Unknown	15%
White	35%

Ethnicity	%
Hispanic/Latino/Spanish Origin	46%
Non-Hispanic/Latino/Spanish Origin	54%

Due to rounding, totals may not equal 100.