

# Cook County Department of Public Health



COVID-19 Contact Tracing Initiative  
November 17, 2020

Rachel Rubin MD  
Kiran Joshi MD  
Jennifer Koehler JD



Cook County  
Public Health

DEPT.  
of

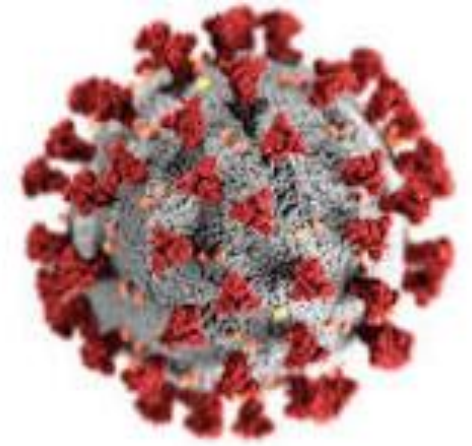
COOK COUNTY  
HEALTH

# Overview

1. Situational Update
2. Contact Tracing Program Goals
3. Hiring Update
4. Metrics
5. Care and Resource Coordination
6. Community-Based Efforts
7. CCDPH COVID-19 Response Work



# COVID-19: Current Situation



As of November 13, 2020:

**101,257**

Confirmed Cases



**2,218**

Deaths\*



**477**

Weekly Case Rate per  
100,000



**15.2%**

Test Positivity Last  
Week



<https://ccdphcd.shinyapps.io/covid19/>

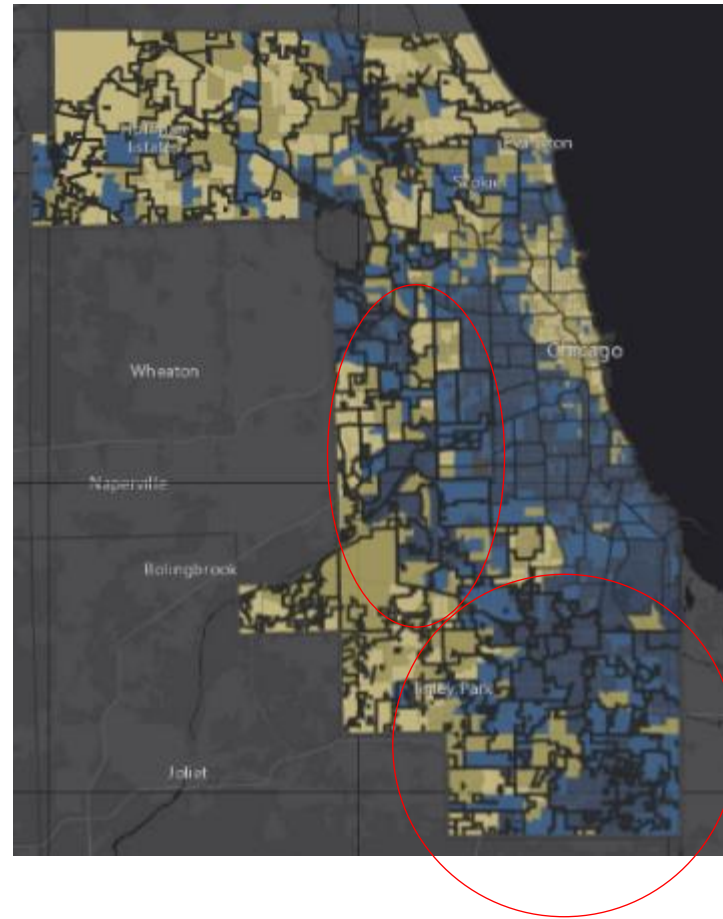
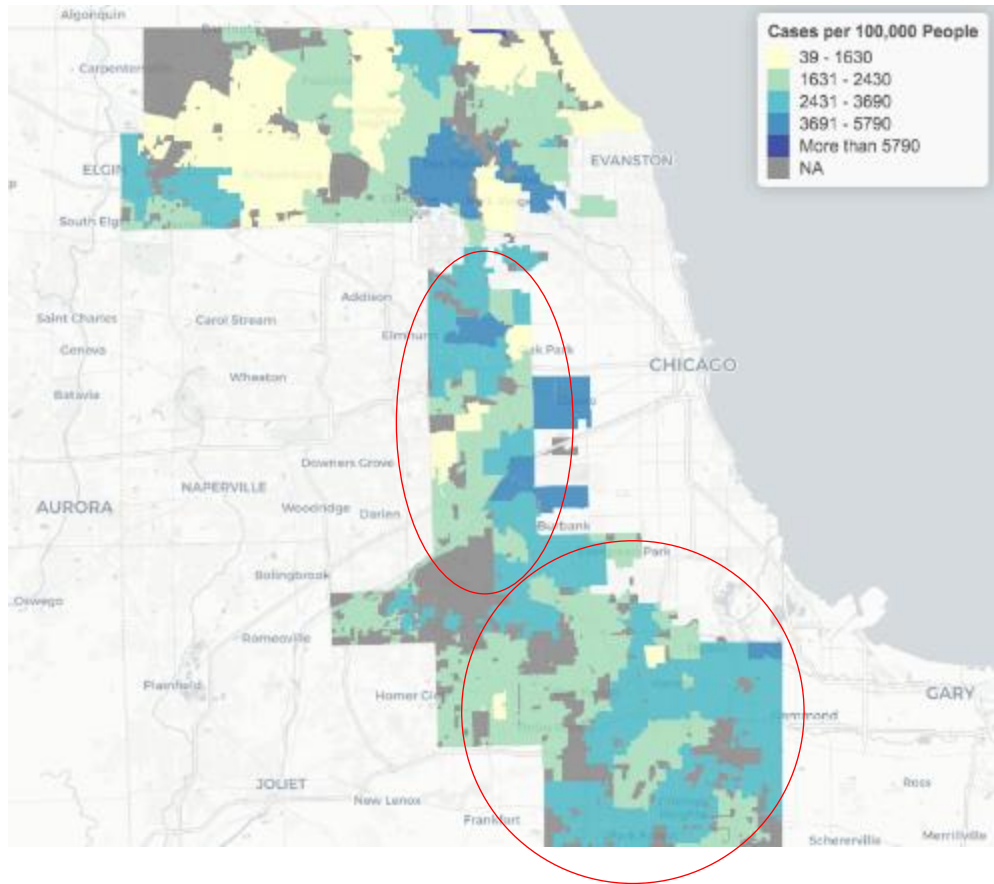


Cook County  
Public Health

DEPT.  
of

COOK COUNTY  
**HEALTH**

# COVID-19 Cases vs. Social Vulnerability Index



Highest case counts are in areas with highest vulnerability.



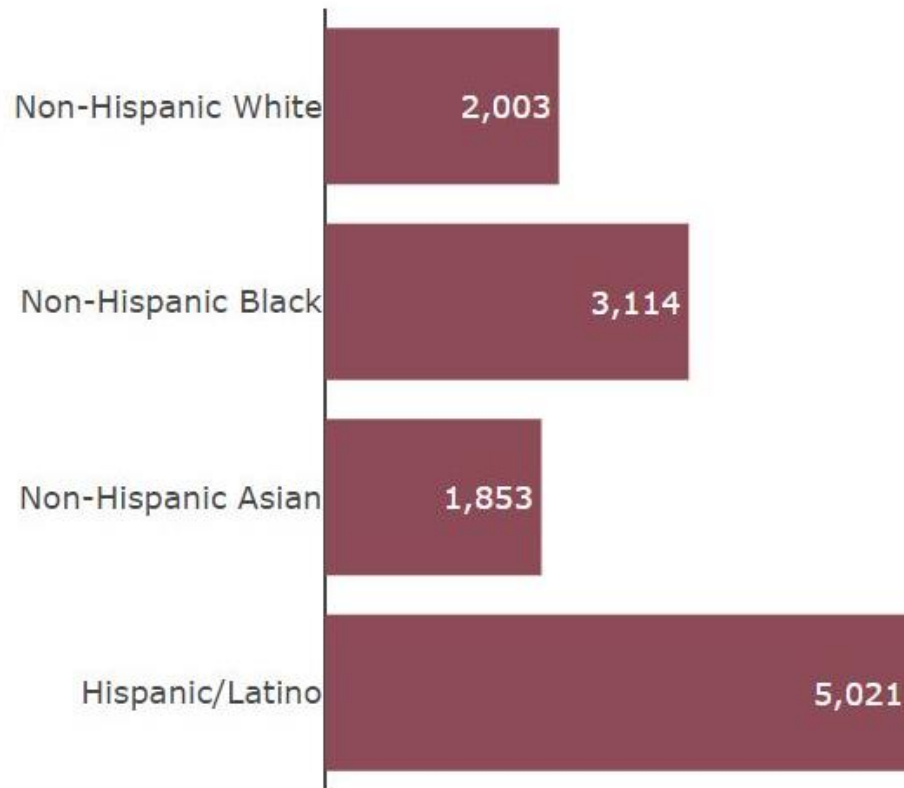
Cook County  
Public Health

DEPT. of

COOK COUNTY  
HEALTH

# Significant Disparities Visible

<https://ccdphcd.shinyapps.io/covid19/>



- Per capita case rates highest in CCDPH's West Region
- Hospitalization rates highest in CCDPH's South Region
- These health disparities are the result of years of inequitable policies



Cook County  
Public Health

COOK COUNTY  
**HEALTH**

# Contact Tracing Initiative Goals



Cook County DEPT.  
of  
Public Health

COOK COUNTY  
**HEALTH**

# Contact Tracing Initiative

## Background

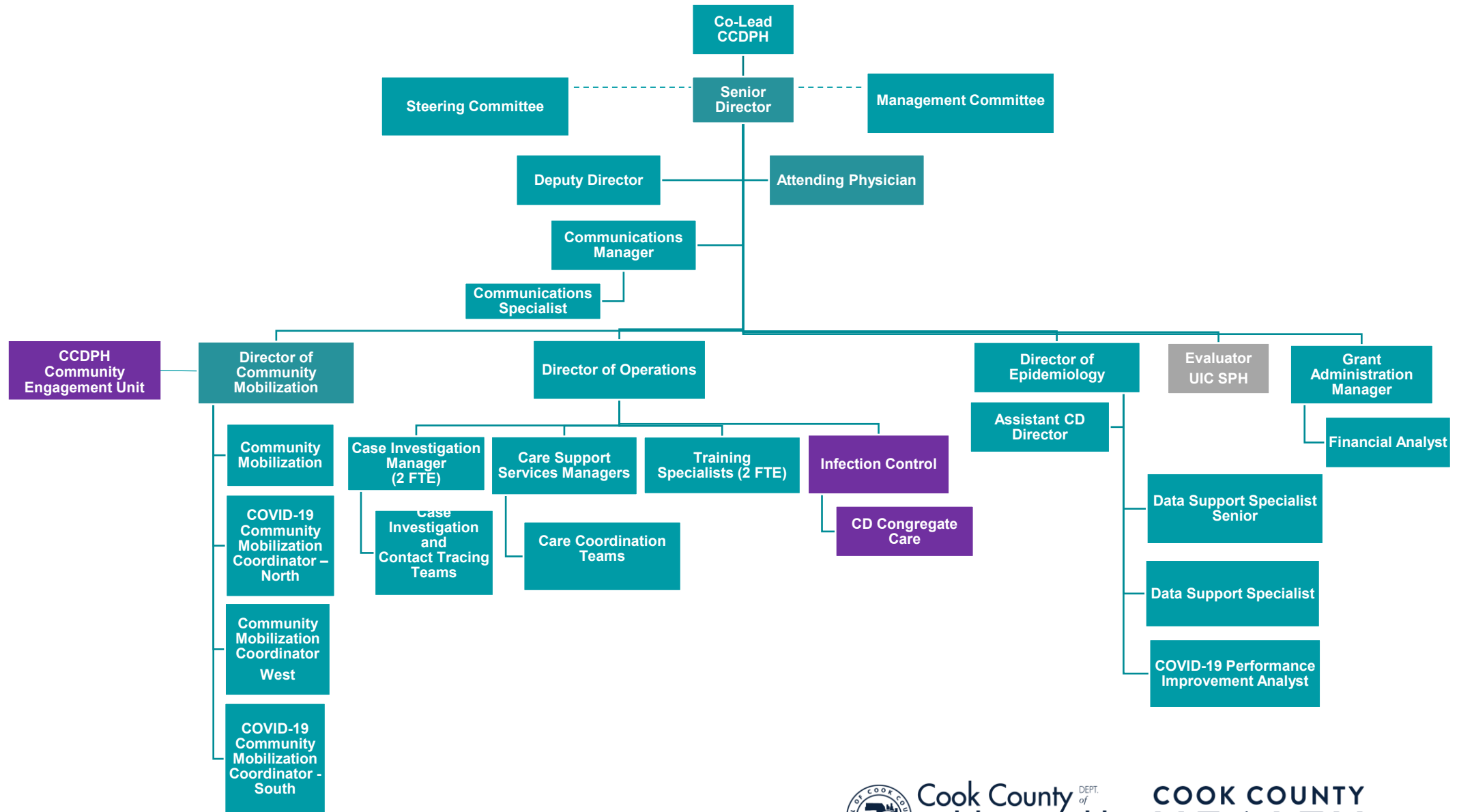
CCDPH received grant of \$41 million in June 2020 for contact tracing and related work

## Goals

1. Build capacity in order to perform tracing in connection with 90% of reported cases within 24 hours of notification
2. Hire sufficient staff to respond to outbreaks in facilities and conduct contact tracing within 24 hours of outbreak identification
3. Ensure cases and contacts have resources available to safely and effectively isolate and quarantine
4. Ensure vulnerable and disparate populations are connected with services and testing
5. Enlist the support of community-based organizations as appropriate



# COVID-19 Contact Tracing Command Structure

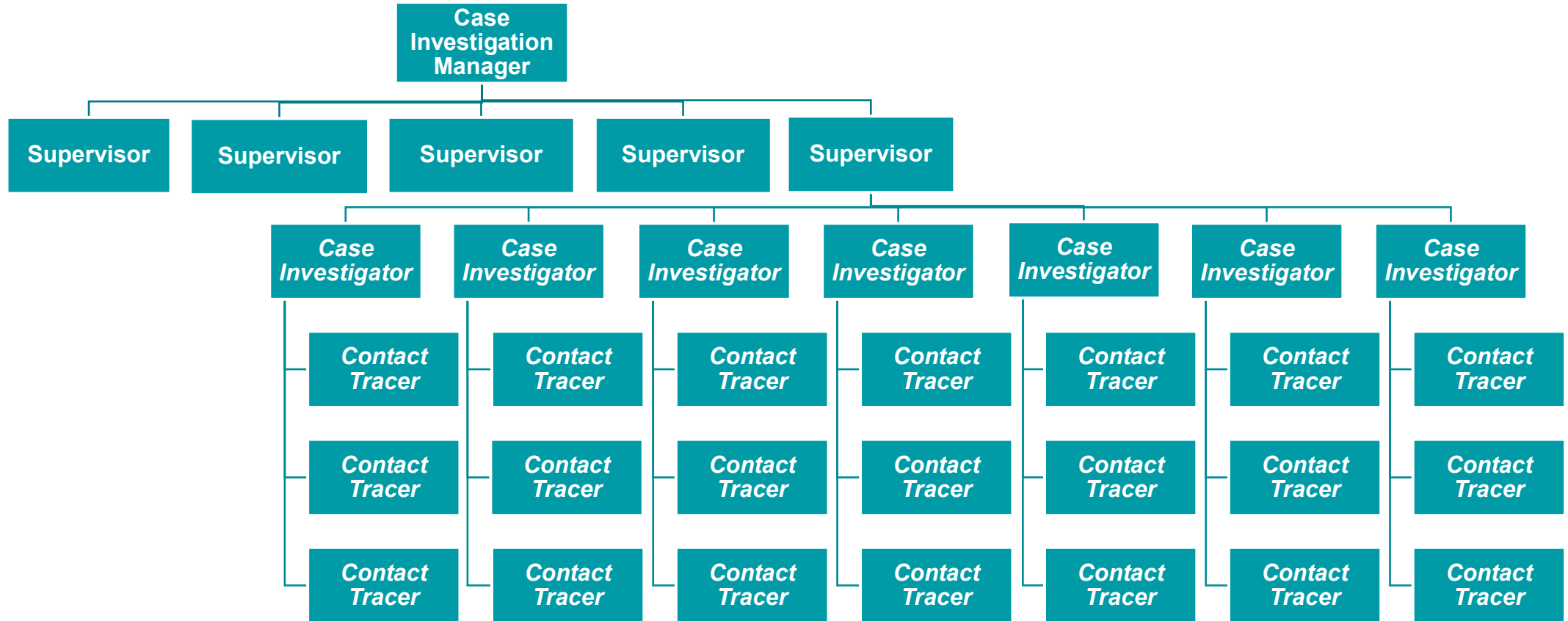


Cook County  
Public Health

DEPT.  
of

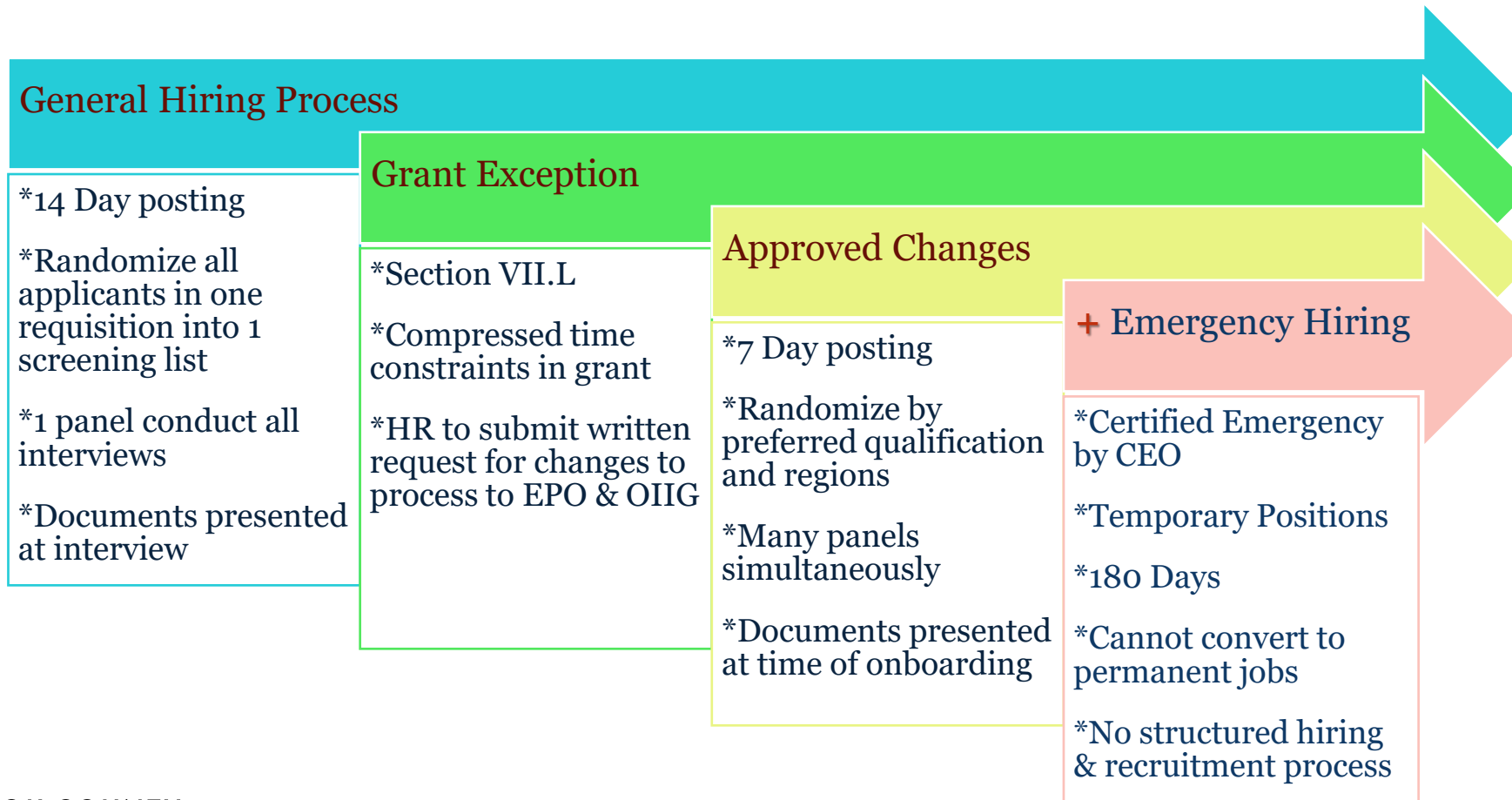
COOK COUNTY  
HEALTH

# Contact Tracing Initiative Structure



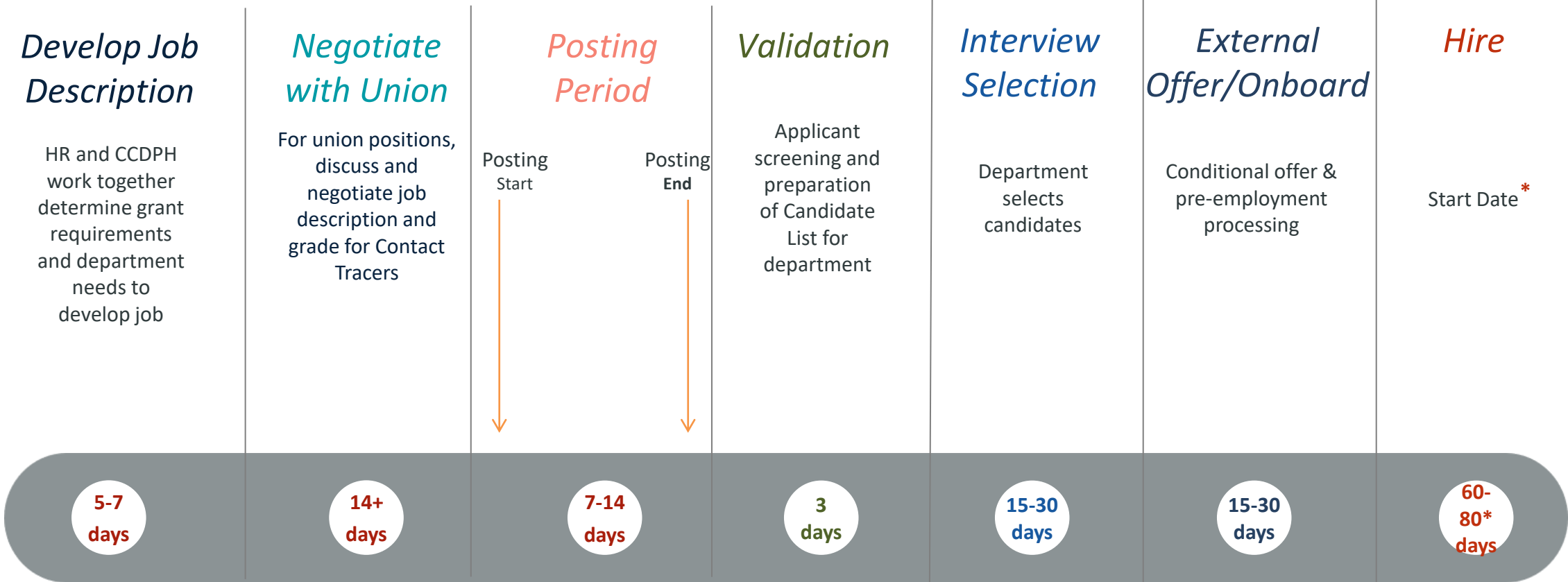
# Contact Tracing Hiring Process

## The Grant Exception and Emergency Temporary Hiring



# Contact Tracing Hiring Process

## Grant Exception Process Timeline



\* Staggered hiring dates

# Hiring

## Contact Tracers

- Total Number of Applicants Called for Interviews: Approximately 750
- Total number of Interviews: Approximately 500 completed

## Management Staff

- Interviews ongoing
- Including management candidates, approximately 600 interviews completed

## Total Current Staff

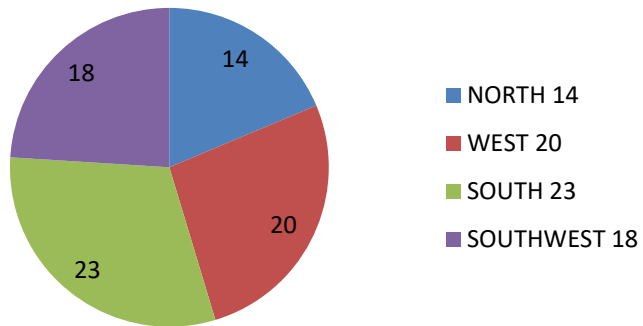
- 78 newly hired
- 25 reassigned CCDPH staff
- 64 additional scheduled for 11/23 and thereafter

## Additional Hiring Efforts

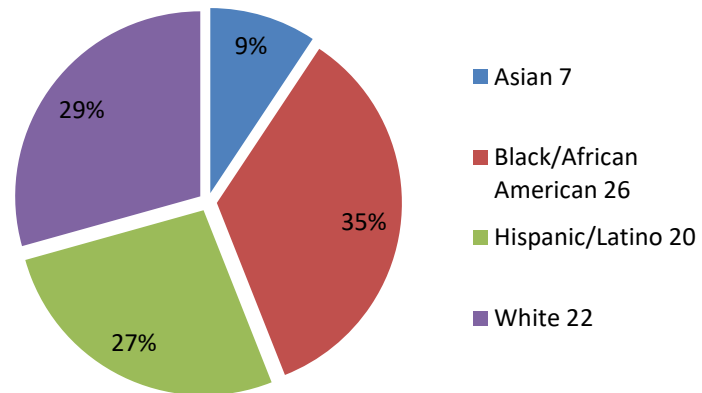
- Additional Hektoen hiring approved by CCHHS Board
- Emergency Hiring approved by OIIG

# Team Members

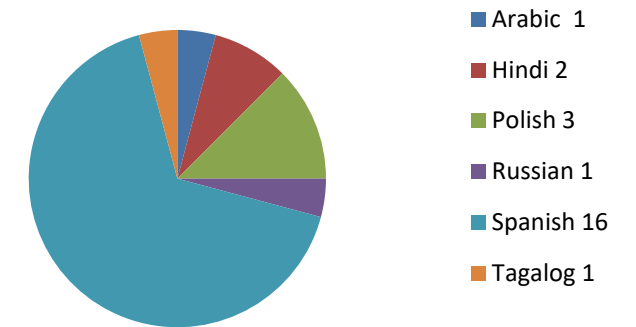
**Service Area Cook  
County Suburban  
Regions**



**Demographics**



**Language Ability**



# Metrics



Cook County DEPT.  
of  
Public Health

COOK COUNTY  
**HEALTH**

# Cases

According to the state, there have been 67,000 positive cases in suburban Cook County since August 1.

- Of those cases, we called 10 percent.
- Of those we called, we were able to interview 69 percent.
- Of those we interviewed, we were able to place 25 percent into isolation.

# Contacts

- Of the 69 percent of cases reached, we elicited 11,986 contacts.
- We are averaging between 2 and 3 contacts per case on average.
- We called 47 percent of those contacts, and reached and interviewed 86 percent of those called

## What does this mean?

- **We are reaching and engaging people**
- **We have a formula and a format that is working**

# Care and Resource Coordination



Cook County DEPT.  
of  
Public Health

COOK COUNTY  
**HEALTH**

# Care Coordination

- CCDPH Contact Tracing Team connects clients to in-house Care Coordination Team to address needs such as:
  - Linkages to appropriate resources
  - Assignment to a medical home or primary care provider and facilitation of a warm handoff once engaged
  - Assistance with documentation or applications for needed services and maintaining coverage
  - Arranging additional telehealth or in person visits for other identified needs, vision screenings, dental screenings for example
  - Grocery delivery, housing assistance, PPE, etc.

# Community-Based Efforts



Cook County DEPT.  
of  
Public Health

COOK COUNTY  
**HEALTH**

# CCDPH Community Supports Program

- Request for Proposals Funded by Contact Tracing Grant
- \$5,450,000 available
- Awardees notified

Work Begins December 1

- ✓ Participation in CCDPH's Learning & Action Network
- ✓ Community Education and Outreach
- ✓ Expanded Support of an Existing Program
- ✓ Community Based Testing



Cook County  
Public Health

DEPT.  
of

COOK COUNTY  
HEALTH

# Worker Protection Program

The CCDPH Worker Protection Program is designed to promote and protect the health and safety of low-wage and temporary workers in suburban Cook County through bi-directional, worker-centered systems for education, reporting and compliance.

- Education: Responsive Worker Centers will be responsible for educating employers and workers of their rights, responsibilities, and best practices for reducing transmission of COVID-19 to promote healthy and safe workplaces.
- Reporting: Centers will ensure workers have a safe, confidential way of reporting violations to identify noncompliant employers; and maintaining transparent communication across relevant parties regarding actions to address complaints.
- Compliance: Centers will support employers and workers to comply with recommendations and requirements to reduce COVID-19 transmission.



# CCDPH COVID-19 Response Efforts



Cook County DEPT.  
of  
Public Health

COOK COUNTY  
**HEALTH**

# CCDPH Response Activities

- Surveillance & Infection Control
- Contact Tracing
- Schools Engagement
- Community mitigation measures
- Enforcement and Workplace Safety
- Testing
- Flu Campaign and Vaccine Coordination
- Vaccination planning
- Alternative Housing
- COVID-19 Vaccination Planning
- Public Inquiries / Phone Bank
- Public Information
- Routine Operations
- Staff Safety/Communication

# CCDPH Response

- Investigated 9,000 COVID-19 cases
- Provided more than 200 congregate settings with ongoing technical assistance and support
- Responded to over 300 food establishment complaints and 100 in other workplaces
- Responded to over 10,000 inquiries from the public
- Investigated 220+ school-related cases



# CCDPH Response

## Schools

- Provide ongoing support to school districts, public, private and parochial
- Investigated and provided guidance to over 220 schools with a positive case or close contact of a case
- Provide ongoing support to school districts, public, private and parochial
- Conducted weekly school information webinars on COVID-19 guidance to school district administration, teachers and school nurses throughout August and September
- Currently providing weekly online Q and A sessions with school personnel

# CCDPH Response

## Long-Term Care Facilities

- Investigated 168 outbreaks covering more than 5000 residents
- Investigations also included 1,300 health care providers
- Conducted 40 onsite assessments in cooperation with Project Hope and CDC



# CCDPH Response

## Enforcement

- CCDPH hosted a series of webinars for law enforcement to support them in understanding their community caretaking role
- CCDPH issued COVID-19 Mitigation Order 2020-1 on 11/6/20
- Continued technical assistance to establishments to help them meet requirements and comply with guidance
- Issuing Notices to Disperse to establishments in violation
- Working with State's Attorney to refer establishments that continue to violate mitigation measures



# CCDPH Response

## Rapid Antigen Tests (BinaxNOW™) Distribution

- CCDPH is distributing BinaxNOW™ tests to organizations in suburban Cook County who are currently testing or have the capacity to use these tests and meet program requirements
- CCDPH is prioritizing vulnerable and high-risk populations
- As of November 16:
  - CCDPH received 60+ requests from a variety of organizations including: long-term care facilities, K-12 schools, hospitals and clinics throughout suburban Cook County
  - CCDPH has approved distribution of 16,000+ tests to these facilities
- Organizations can submit a request for tests on CCDPH's website:  
<https://cookcountypublichealth.org/covid-19-rapid-antigen-test-request/>



Thank you. ↗



Cook County DEPT.  
of  
Public Health

COOK COUNTY  
**HEALTH**